



FH-400 Case - Puma Tier 4 (W/Out Loader)Series

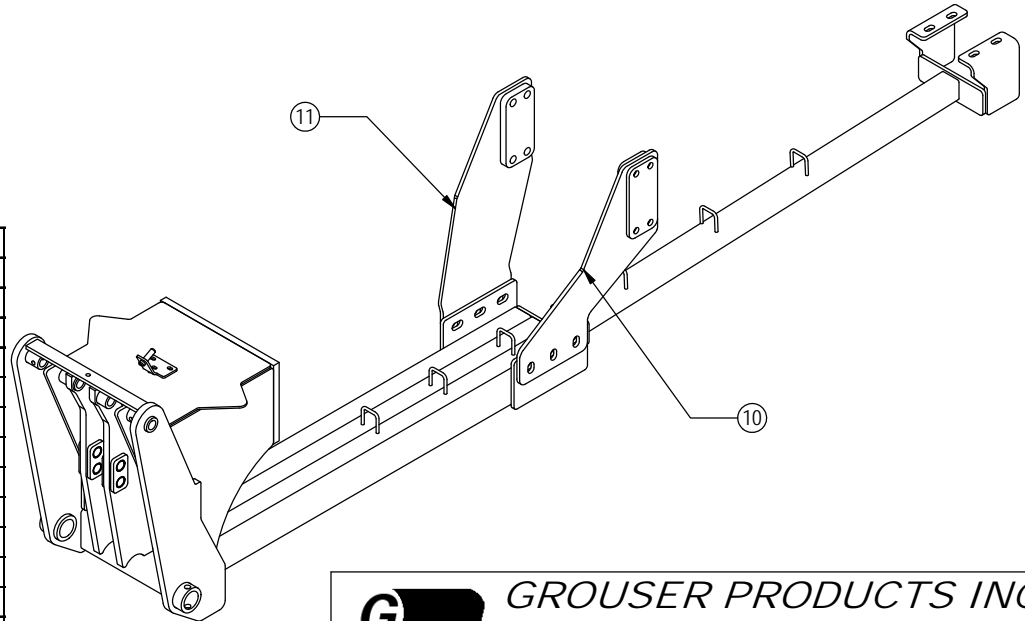
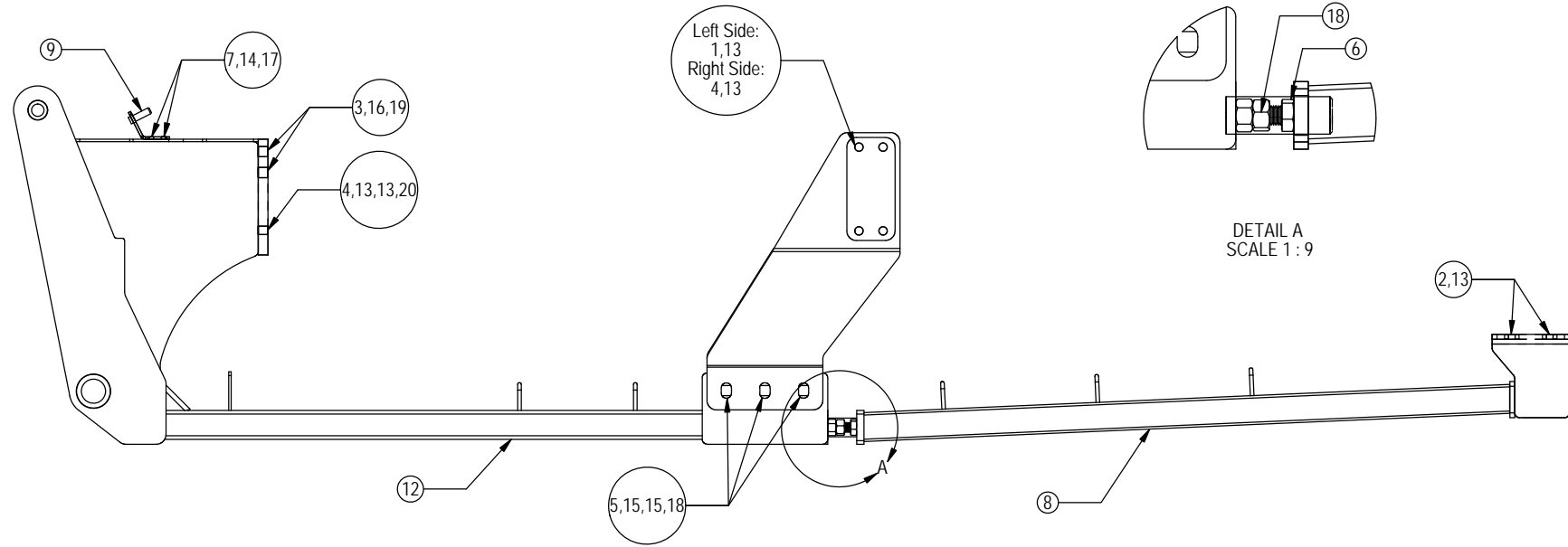
Undercarriage Installation Instructions

Caution:

- Always use precaution when working around any equipment.
- Always wear safety glasses.
- Follow tractor manufacturer's safety guidelines when installing this product.
 1. Read all instructions prior to installation.
 2. Remove either the weights and weight bracket or the front nose casting from the front of tractor.
 3. Install 2 - 1" x 3" bolts (PN: 16-20562) and 2 - 1" nuts (PN: 70-20599) on the end of the undercarriage. Turn the 1" bolts in for installation. The bolts will be adjusted after the push pole is installed. See the attached diagram for proper installation of the bolts and nuts.
 4. Position the undercarriage (U/C) under the tractor and center with the frame of the tractor.
 5. Lift the U/C until the holes on the tractor line up with the holes on the U/C.
 6. Insert 4 - 24mm x 150mm bolts (PN: 16-1875) through the top 4 holes of the U/C first and then the tractor frame.
 7. Once the bolts are through the tractor frame, install a 1" heavy clipped washer (PN: 57-3098) and 24mm nut (PN: 70-20874) on each 24mm bolt.
 8. Insert 2 - 20mm x 100mm bolts (PN: 16-1877) and 2 - 3/4" flat washers (PN: 57-20747) through the bottom 2 holes of the U/C and the tractor frame.
 9. Once the bolts are through the tractor frame, install a 3/4" flat washer (PN: 57-20747) and 20mm nut (PN: 70-3494) on each 20mm bolt.
 10. Remove the hardware attaching the exhaust support to the right side of the tractor. If there is a spacer with the exhaust support, the spacer will be used when installing the right rail. Remove the hardware attaching the exhaust to the exhaust support. While keeping the exhaust in the same location, slide the support out to make room for installing the right rail in step #12. Reattach the exhaust to the exhaust support.
 11. Use 4 - 20mm x 90mm bolts (PN: 16-1510) with a 3/4" flat washer (PN: 57-20747) on each bolt in the holes of the left rail (PN: 46-15545-L) to attach the left rail to the tractor frame.
 12. Use 4 - 20mm x 100mm bolts (PN: 16-1877) with a 3/4" flat washer (PN: 57-20747) on each bolt in the holes of the right rail (PN: 46-15545-R) to attach the the spacer, exhaust support, and right rail to the tractor frame. See attached diagram for any clarification.
 13. Attach the left and right rails to the left and right sides of the undercarriage with 3 - 1" x 2-1/2" bolts (PN: 16-20560), 6 - 1" heavy flat washers (PN: 57-20819), and 3 - 1" nuts (PN: 70-20599) for each side.
 14. Once all bolts are installed, torque the front 24mm bolts to 909 ft-lbs., the front 20mm bolts to 432 ft-lbs., the remaining 20mm bolts to 432 ft-lbs., and all 1" bolts to 903 ft-lbs.

- 15.** Position the push pole (PN: 17-15555) under the tractor. See the attached diagram for correct orientation of the push pole.
- 16.** Slide the push pole onto the rod at the rear of the undercarriage.
- 17.** Support the drawbar bracket and remove the four bolts from the drawbar under the rear axle.
- 18.** Attach the push pole to the drawbar under the rear axle with 4 - 18mm x 80mm bolts (PN: 16-1815080) and 4 - 3/4" flat washers (PN: 57-20747).
- 19.** Push the push pole back until it is tight against the tractor's drawbar bracket. Torque the 18mm bolts to 405 ft-lbs. See attached diagram for any clarification.
- 20.** Unscrew the two 1" x 3" bolts at the rear of the undercarriage until they are tight against the push pole. Torque the 1" bolts to 90-95 ft-lbs. Tighten the nuts up tight against the undercarriage. Use the nuts to lock the bolts in place
- 21.** To attach the hood latch bracket (PN: 18-11990) to the top of the U/C insert 3 - 3/8" x 1" carriage bolts (PN: 16-21064) from the bottom. Install a 3/8" lock washer (PN: 57-20762) and a 3/8" nut (PN: 70-20582) on each carriage bolt. See attached diagram for any clarification.
- 22.** After first 8 hours of use, re-torque all bolts.
- 23.** Check all fasteners regularly to ensure proper operation of equipment.

THE INFORMATION CONTAINED IN THIS DRAWING IS THE SOLE PROPERTY OF GROUSER PRODUCTS INC ANY REPRODUCTION IN PART OR WHOLE WITHOUT THE WRITTEN PERMISSION OF GROUSER PRODUCTS INC IS PROHIBITED.



Item No.	Qty.	Part No.	Description
1	4	16-1510	20mm x 2.5mm x 90mm Metric Hex Bolt Gr. 10.9
2	4	16-1815080	18mm x 1.5mm x 80mm Metric Hex Bolt Gr. 10.9
3	4	16-1875	24mm x 3.0mm x 150mm Metric Hex Bolt Gr.10.9
4	6	16-1877	20mm x 2.5mm x 100mm Metric Hex Bolt Gr.10.9
5	6	16-20560	1" x 2-1/2" Hex Bolt Gr.8 NC
6	2	16-20562	1" x 3" Hex Bolt Gr.8 NC
7	3	16-21064	3/8" x 1" Carriage Bolt Gr.5 NC
8	1	17-15555	FH-400 Case - Puma Tier 4 Push Pole
9	1	18-11990	FH-400 Case - Puma Hood Latch Bracket
10	1	46-14595-L	FH-400 Case - Puma Tier 4 Rail Left - W/Out Loader
11	1	46-14595-R	FH-400 Case - Puma Tier 4 Rail Right - W/Out Loader
12	1	54-15550	FH-400 UC Case - Puma Tier 4
13	16	57-20747	3/4" Flat Washer
14	3	57-20762	3/8" Lock Washer
15	12	57-20819	1" Flat Washer Heavy Duty Gr 8 (USS)
16	4	57-3098	2.5" O.D. x 1.05" I.D. x 0.50" Washer CZ Plated - Clipped
17	3	70-20582	3/8" Hex Nut Gr.5 NC
18	8	70-20599	1" Hex Nut Gr.8 NC
19	4	70-20874	24mm Hex Nut 3.0 Pitch
20	2	70-3494	20mm Hex Nut 2.5 Pitch



GROUSER PRODUCTS INC.

755 2nd Ave NW Phone 701.282.7710
 West Fargo, ND 58078 Fax 701.282.8131
 WWW.GROUSER.COM

TITLE: FH-400 U/C Case Puma Tier 4

Date: 9/2/2014

DWG. NO.: 14595-A