



# 240I and 241I Owner's Manual & Parts Book

|               |
|---------------|
| Purchase Date |
| Serial Number |
| Model Number  |
| Tractor Model |
| Dealer        |

# Contents

| Description                                | Page  |
|--|-------|
| To The Owner, Maintenance                  | 2     |
| Safety Precautions & Torque Specifications | 3     |
| Skid Shoe and Tilt Plate Adjustment        | 4     |
| Angle / Tilt Function Abbreviation Key     | 4     |
| Relief Valve Instructions                  | 5     |
| NANT Blade Assy                            | 6     |
| HANT Blade Assy                            | 7     |
| HAHT Blade Assy                            | 8     |
| Hydraulic Angle - No Tilt System           | 9     |
| Hydraulic Angle - Hydraulic Tilt System    | 10-11 |
| Lift System                                | 12-13 |
| Hydraulic Angle Hose Routing               | 14-15 |
| Hydraulic Tilt Hose Routing                | 16    |
| Tractor Side & Lift System Hydraulics      | 17    |
| Hydraulic Schematic                        | 18    |
| Notes                                      | 19    |
| Contact Us, Improvements, & Warranty       | 20    |

## To The Owner

This manual contains information concerning the operation, adjustment, and maintenance of the 240 blade assembly. You have purchased dependable, long lasting equipment, but only by proper care and operation can you expect to receive the performance and long service built into our products. Please have all operators read this manual carefully and keep the manual available for ready reference. If you have any questions or concerns, contact Grouser Products.

## Maintenance

**Due to the harsh environment many of our equipment operates in, the following tasks should be performed every 10 hours or less.**

- Inspect all equipment before operation for existing or potential damages.
- Lubricate all joints with high quality grease.
- Inspect and tighten all bolts to torque specifications on page 3.
- Check replaceable cutting edge for wear ensuring there is enough material to prevent permanent damage to the blade.
- Make sure all non-rotating pins are secured properly.
- Check hydraulic cylinders and hoses for damage or leaks. For replacement parts, see hydraulic pages for your specific system.
- Check skid shoes for wear and replace if necessary. For adjustment, see page 4.
- Inspect all tilt-ways for aggressive wear. See page 4 for tilt plate adjustment.

# Safety Precautions

A careful operator is the best operator. Most accidents can be avoided by observing certain precautions. To help prevent accidents, read and take the following precautions before operating this equipment. In addition to these precautions, please follow all safety and operational instructions of your tractor manufacturer.

## The Dozer:

1. The 240I and 241I Dozer should be operated only by those who are responsible and instructed to do so.
2. Read the owner's manual carefully before using this equipment. Lack of operating knowledge can lead to accidents.
3. Keep the dozer maintained in reliable and satisfactory condition to ensure your safety.
4. Make sure the area is clear of people before moving any equipment.
5. Do not modify or permit anyone else to modify or alter the equipment and its components without first consulting Grouser Products.

## Servicing the Dozer:

1. Read and follow all safety instructions provided by the tractor manufacturer.
2. Always use proper personal safety gear when performing maintenance on equipment.
3. Before servicing, relieve hydraulic pressure, stop engine and fully engage parking brake.
4. Escaping hydraulic fluid under pressure can penetrate skin causing serious injury. If fluid is injected into skin, obtain medical attention immediately.
  - DO NOT use your hand to check for leaks. Use a piece of cardboard or paper to search for leaks.
  - Stop the engine and relieve pressure before connecting or disconnecting lines.
  - Tighten all connections before starting the engine or pressurizing lines.

## Storing the Dozer:

1. Thoroughly clean the inside and outside of the dozer before storage. Use paint where necessary to prevent rust.
2. Check the dozer for worn or damaged parts. Install new parts as required.
3. Lubricate all pins and joints.

# Torque Specifications

All bolts should be tightened to the specifications that are stated. If specifications are not stated, follow torque charts below.

| Size | Torque - Dry (ft-lbs) |     |             |      |
|------|-----------------------|-----|-------------|------|
|      | SAE Grade 5           |     | SAE Grade 8 |      |
|      | UNC                   | UNF | UNC         | UNF  |
| 5/16 | 17                    | 19  | 24          | 27   |
| 3/8  | 30                    | 35  | 45          | 50   |
| 7/16 | 50                    | 55  | 70          | 80   |
| 1/2  | 75                    | 85  | 110         | 120  |
| 9/16 | 110                   | 120 | 150         | 170  |
| 5/8  | 150                   | 170 | 210         | 240  |
| 3/4  | 260                   | 300 | 380         | 420  |
| 7/8  | 430                   | 470 | 600         | 670  |
| 1    | 640                   | 720 | 910         | 1020 |

|            | Torque - Dry (ft-lbs) |
|------------|-----------------------|
| Size       | Grade 10.9            |
| M18 x 2.50 | 284                   |
| M20 x 2.50 | 401                   |
| M22 x 2.50 | 547                   |
| M24 x 3.00 | 694                   |

# Skid Shoe and Tilt Plate Adjustment

## Skid Shoe Adjustment:

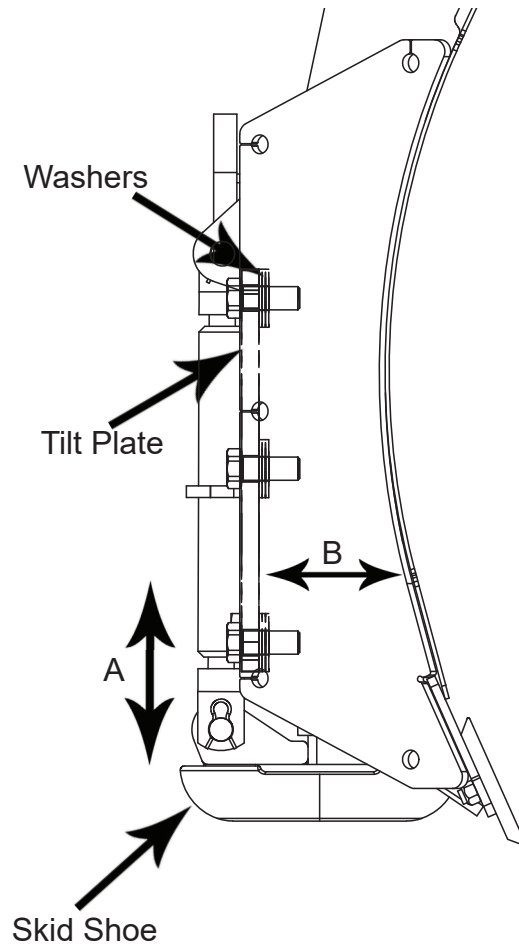
1. Use the ratchet jack to raise and lower the skid shoes in direction 'A'.
2. Store the ratchet jack handle in the manual holder on the top arm.
3. When skid shoes are worn down, replace with new skid shoes.

## Tilt Plate Adjustment:

1. Remove bolts and tilt plates.

Note: Don't remove all of the bolts at the same time.

2. Add or remove washers as needed to adjust tilt-way clearance to have  $1/16''$  -  $1/8''$  of clearance in direction 'B' shown.
3. Once the tilt-way clearance is set, tighten bolts to 640 ft-lbs.



## Angle / Tilt Function Abbreviation Key

|      |                                  |       |
|------|----------------------------------|-------|
| HAHT | Hydraulic Angle - Hydraulic Tilt | 6-Way |
| HANT | Hydraulic Angle - No Tilt        | 4-Way |
| NAHT | No Angle - Hydraulic Tilt        | 4-Way |
| NANT | No Angle - No Tilt               | 2-Way |

# Relief Valve Instructions

---

---

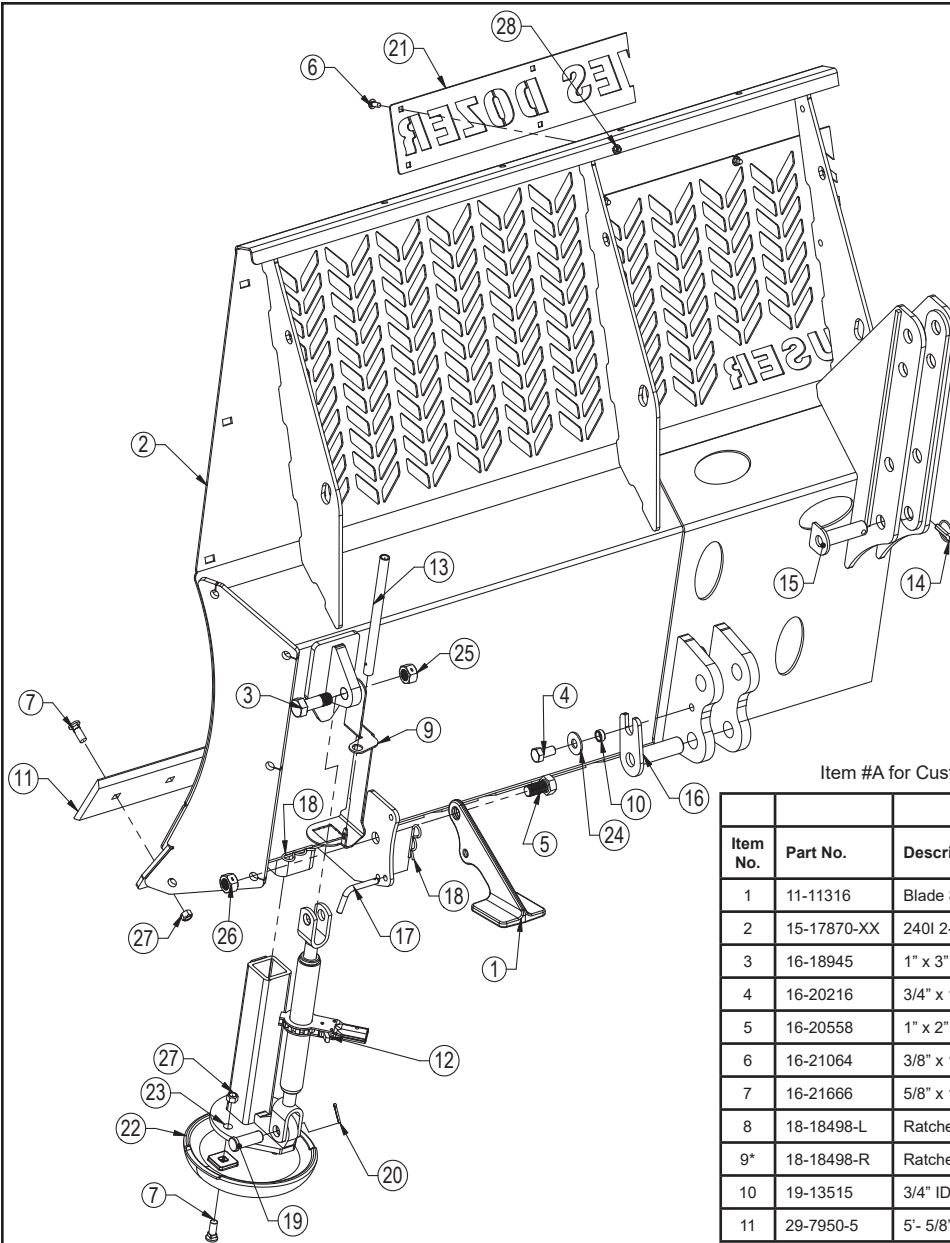
**Set the safety relief valve at a higher pressure than tractor:** To increase the pressure of the relief valve, install a 0-5,000 psi pressure gauge into the base end of right angle cylinder (see page 21). Loosen the jam nut on the safety valve and tighten the Allen screw 1/2 turn. Next, extend the right side cylinder out until the safety valve activates, while the safety valve is in function, record the pressure reading on the gauge. Continue to tighten the Allen screw in 1/2 turn increments and record the pressure until a high enough relief setting is obtained. **Do not exceed the 3,000-psi operating pressure of the cylinders.** Tighten the jam nut and remove the gauge. Follow the same steps for the left side cylinder.

**Automatic lever release:** In certain newer model tractors, the hydraulic control lever will automatically release and instantly stop oil flow once the end of the stroke is reached.

**CAUTION: Do not bypass the safety relief valve and plumb each cylinder to separate valves on the tractor.**

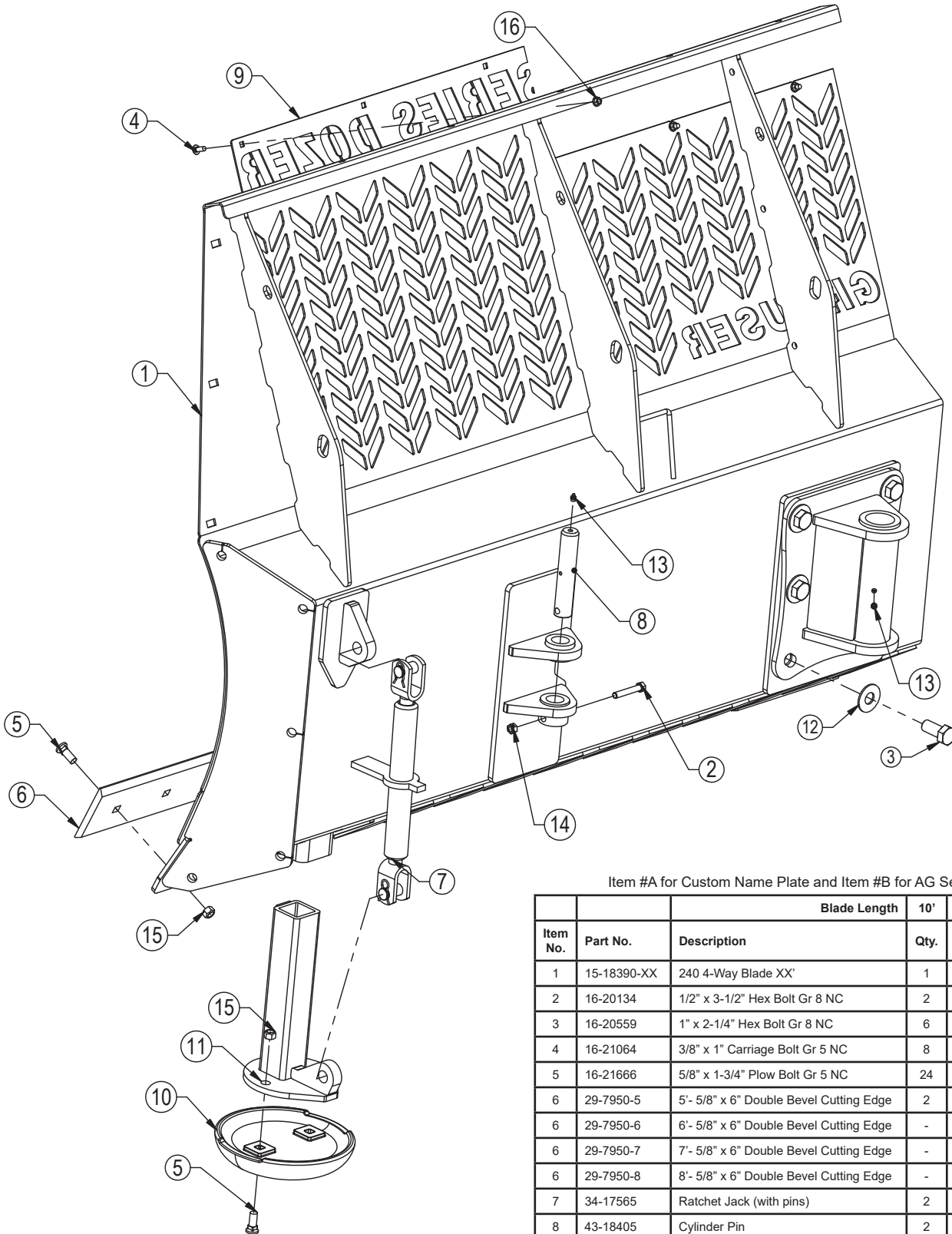
**Please contact Grouser Products with any questions by:**  
Phone - 701-282-7710 or 800-747-6182; Fax - 701-282-8131

# NANT Blade Assembly



Item #A for Custom Name Plate and Item #B for AG Series Name Plate

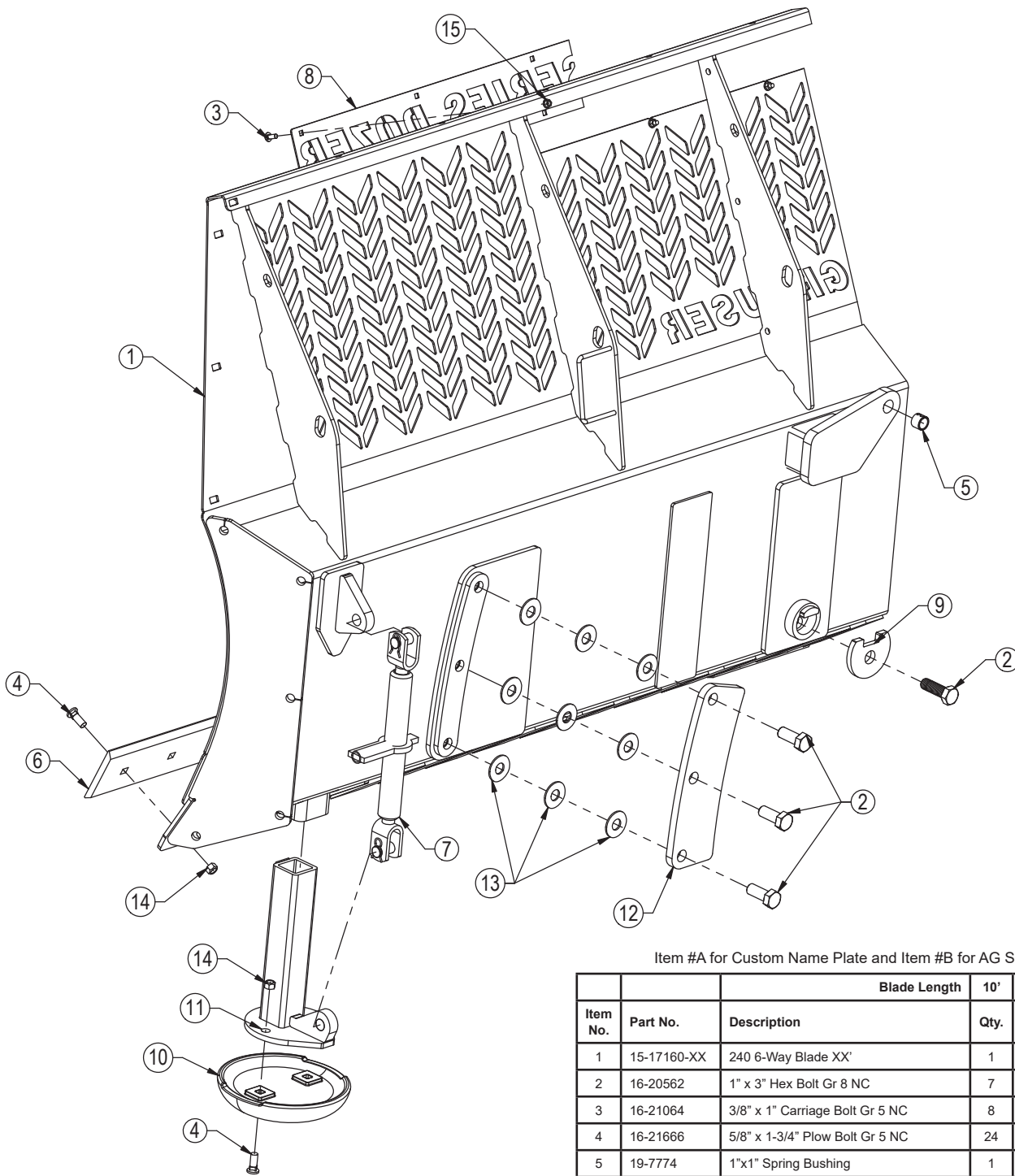
| Item No. | Part No.    | Description                             | Blade Length |     |     |     |
|----------|-------------|---|--------------|-----|-----|-----|
|          |             |   | 10'          | 12' | 14' | 16' |
| 1        | 11-11316    | Blade Stand Arm                         | 2            | 2   | 2   | 2   |
| 2        | 15-17870-XX | 240I 2-Way Blade XX'                    | 1            | 1   | 1   | 1   |
| 3        | 16-18945    | 1" x 3" Hex Bolt Gr 5                   | 2            | 2   | 2   | 2   |
| 4        | 16-20216    | 3/4" x 1-1/2" Hex Bolt Gr 5 NC          | 2            | 2   | 2   | 2   |
| 5        | 16-20558    | 1" x 2" Hex Bolt Gr 8 NC                | 2            | 2   | 2   | 2   |
| 6        | 16-21064    | 3/8" x 1" Carriage Bolt Gr 5 NC         | 8            | 8   | 8   | 8   |
| 7        | 16-21666    | 5/8" x 1-3/4" Plow Bolt Gr 5 NC         | 24           | 28  | 32  | 36  |
| 8        | 18-18498-L  | Ratchet Keeper                          | 1            | 1   | 1   | 1   |
| 9*       | 18-18498-R  | Ratchet Keeper                          | 1            | 1   | 1   | 1   |
| 10       | 19-13515    | 3/4" ID Non Rotating Pin Spacer         | 2            | 2   | 2   | 2   |
| 11       | 29-7950-5   | 5'- 5/8" x 6" Double Bevel Cutting Edge | 2            | -   | -   | -   |
| 11       | 29-7950-6   | 6'- 5/8" x 6" Double Bevel Cutting Edge | -            | 2   | -   | -   |
| 11       | 29-7950-7   | 7'- 5/8" x 6" Double Bevel Cutting Edge | -            | -   | 2   | -   |
| 11       | 29-7950-8   | 8'- 5/8" x 6" Double Bevel Cutting Edge | -            | -   | -   | 2   |
| 12       | 34-17565    | Ratchet Jack (with pins)                | 2            | 2   | 2   | 2   |
| 13       | 34-17567    | Ratchet Handle                          | 2            | 2   | 2   | 2   |
| 14       | 43-16764    | 7/16" x 1-3/4" Lynch Pin                | 1            | 1   | 1   | 1   |
| 15       | 43-3287     | Top Link Pin                            | 1            | 1   | 1   | 1   |
| 16       | 43-3289     | Lower Lift Pin                          | 2            | 2   | 2   | 2   |
| 17       | 43-9582     | Bent Claw Pin                           | 2            | 2   | 2   | 2   |
| 18       | 43-7767     | Hitch Clip Pin                          | 4            | 4   | 4   | 4   |
| 19       | 43-18463    | 1" x 2.75" Pin                          | 2            | 2   | 2   | 2   |
| 20       | 43-18943    | 3/16" Cotter Pin                        | 2            | 2   | 2   | 2   |
| 21A      | 44-14830    | Custom Name Plate                       | 1            | 1   | 1   | 1   |
| 21B      | 44-15150    | AG Pro Name Plate                       | 1            | 1   | 1   | 1   |
| 22       | 50-15458    | 12" Round Mushroom Skid Shoe            | 2            | 2   | 2   | 2   |
| 23       | 50-17545    | 240 Skid Shoe Mount - Mushroom          | 2            | 2   | 2   | 2   |
| 24       | 57-20747    | 3/4" Flat Washer                        | 2            | 2   | 2   | 2   |
| 25       | 70-20999    | 1" Hex Top Lock Nut                     | 2            | 2   | 2   | 2   |
| 26       | 70-20609    | 1" Hex Center Lock Nut                  | 2            | 2   | 2   | 2   |
| 27       | 70-20646    | 5/8" Hex Top Lock Nut Gr 5 NC           | 24           | 28  | 32  | 36  |
| 28       | 70-20622    | 3/8" Flange Nut                         | 8            | 8   | 8   | 8   |



Item #A for Custom Name Plate and Item #B for AG Series Name Plate

| Item No. | Part No.    | Description                             | Blade Length |     |     |     |
|----------|-------------|---|--------------|-----|-----|-----|
|          |             |   | 10'          | 12' | 14' | 16' |
| 1        | 15-18390-XX | 240 4-Way Blade XX'                     | 1            | 1   | 1   | 1   |
| 2        | 16-20134    | 1/2" x 3-1/2" Hex Bolt Gr 8 NC          | 2            | 2   | 2   | 2   |
| 3        | 16-20559    | 1" x 2-1/4" Hex Bolt Gr 8 NC            | 6            | 6   | 6   | 6   |
| 4        | 16-21064    | 3/8" x 1" Carriage Bolt Gr 5 NC         | 8            | 8   | 8   | 8   |
| 5        | 16-21666    | 5/8" x 1-3/4" Plow Bolt Gr 5 NC         | 24           | 28  | 32  | 36  |
| 6        | 29-7950-5   | 5'- 5/8" x 6" Double Bevel Cutting Edge | 2            | -   | -   | -   |
| 6        | 29-7950-6   | 6'- 5/8" x 6" Double Bevel Cutting Edge | -            | 2   | -   | -   |
| 6        | 29-7950-7   | 7'- 5/8" x 6" Double Bevel Cutting Edge | -            | -   | 2   | -   |
| 6        | 29-7950-8   | 8'- 5/8" x 6" Double Bevel Cutting Edge | -            | -   | -   | 2   |
| 7        | 34-17565    | Ratchet Jack (with pins)                | 2            | 2   | 2   | 2   |
| 8        | 43-18405    | Cylinder Pin                            | 2            | 2   | 2   | 2   |
| 9A       | 44-14830    | Custom Name Plate                       | 1            | 1   | 1   | 1   |
| 9B       | 44-15150    | AG Pro Name Plate                       | 1            | 1   | 1   | 1   |
| 10       | 50-15458    | 12" Round Mushroom Skid Shoe            | 2            | 2   | 2   | 2   |
| 11       | 50-17545    | 240 Skid Shoe Mount - Mushroom          | 2            | 2   | 2   | 2   |
| 12       | 57-20819    | 1" Flat Washer Heavy Duty Gr 8 (USS)    | 6            | 6   | 6   | 6   |
| 13       | 58-9369     | Grease Zerk 1/8" NPT Straight           | 3            | 3   | 3   | 3   |
| 14       | 70-20604    | 1/2" Hex Center Lock Nut                | 2            | 2   | 2   | 2   |
| 15       | 70-20646    | 5/8" Hex Top Lock Nut Gr 5 NC           | 24           | 28  | 32  | 36  |
| 16       | 70-20622    | 3/8" Flange Nut                         | 8            | 8   | 8   | 8   |

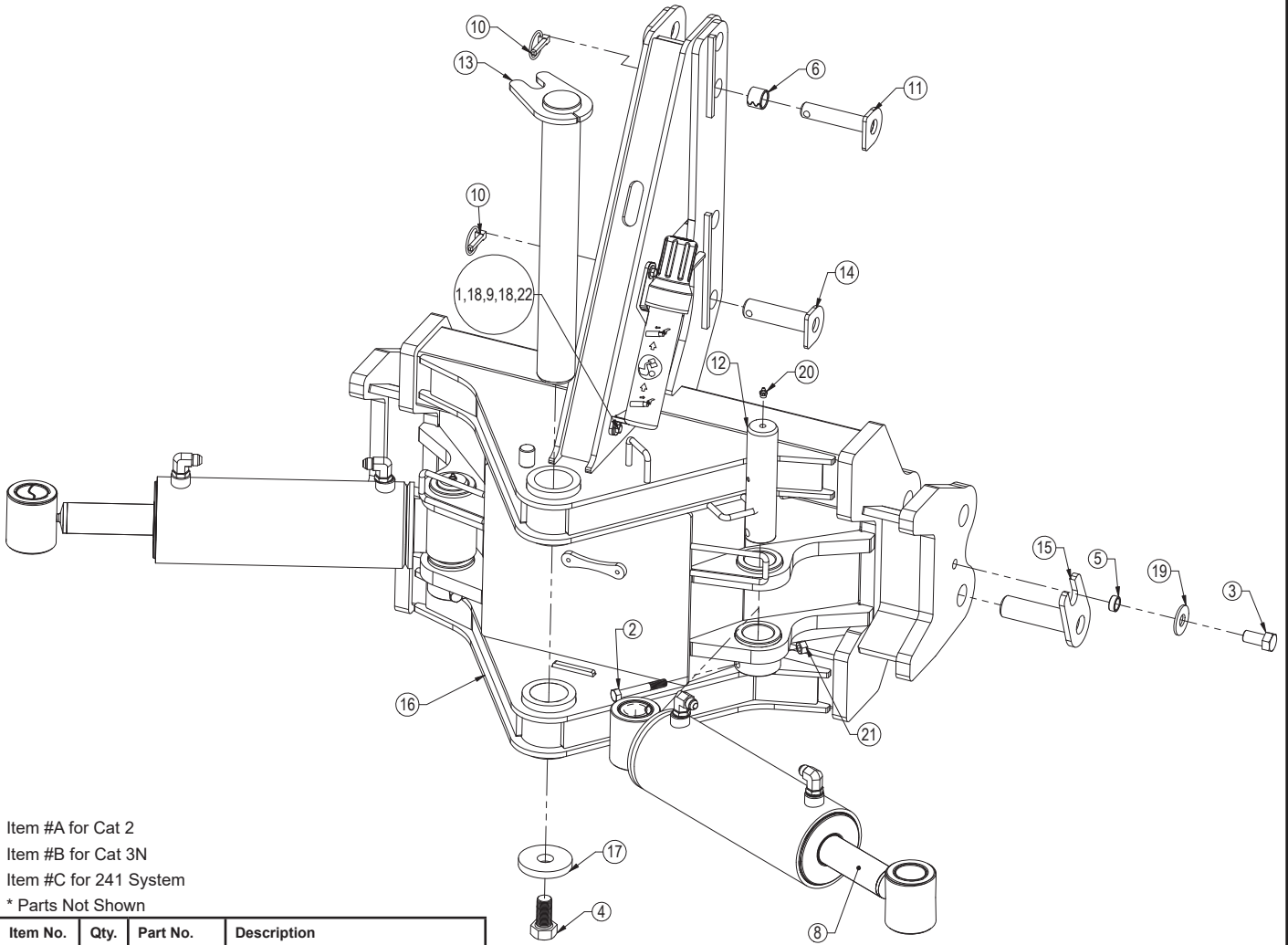
# HAHT Blade Assembly



Item #A for Custom Name Plate and Item #B for AG Series Name Plate

| Item No. | Part No.    | Description                             | Blade Length |     |     |     |
|----------|-------------|---|--------------|-----|-----|-----|
|          |             |   | 10'          | 12' | 14' | 16' |
| 1        | 15-17160-XX | 240 6-Way Blade XX'                     | 1            | 1   | 1   | 1   |
| 2        | 16-20562    | 1" x 3" Hex Bolt Gr 8 NC                | 7            | 7   | 7   | 7   |
| 3        | 16-21064    | 3/8" x 1" Carriage Bolt Gr 5 NC         | 8            | 8   | 8   | 8   |
| 4        | 16-21666    | 5/8" x 1-3/4" Plow Bolt Gr 5 NC         | 24           | 28  | 32  | 36  |
| 5        | 19-7774     | 1"x1" Spring Bushing                    | 1            | 1   | 1   | 1   |
| 6        | 29-7950-5   | 5'- 5/8" x 6" Double Bevel Cutting Edge | 2            | -   | -   | -   |
| 6        | 29-7950-6   | 6'- 5/8" x 6" Double Bevel Cutting Edge | -            | 2   | -   | -   |
| 6        | 29-7950-7   | 7'- 5/8" x 6" Double Bevel Cutting Edge | -            | -   | 2   | -   |
| 6        | 29-7950-8   | 8'- 5/8" x 6" Double Bevel Cutting Edge | -            | -   | -   | 2   |
| 7        | 34-17565    | Ratchet Jack (with pins)                | 2            | 2   | 2   | 2   |
| 8A       | 44-14830    | Custom Name Plate                       | 1            | 1   | 1   | 1   |
| 8B       | 44-15150    | AG Pro Name Plate                       | 1            | 1   | 1   | 1   |
| 9        | 44-15339    | 240 Backdrag Brace Plate                | 1            | 1   | 1   | 1   |
| 10       | 50-15458    | 12" Round Mushroom Skid Shoe            | 2            | 2   | 2   | 2   |
| 11       | 50-17545    | 240 Skid Shoe Mount - Mushroom          | 2            | 2   | 2   | 2   |
| 12       | 52-17265    | 240 Tilt Plate                          | 2            | 2   | 2   | 2   |
| 13       | 57-20749    | 1" Flat Washer                          | 18           | 18  | 18  | 18  |
| 14       | 70-20646    | 5/8" Hex Top Lock Nut Gr 5 NC           | 24           | 28  | 32  | 36  |
| 15       | 70-20622    | 3/8" Flange Nut                         | 8            | 8   | 8   | 8   |





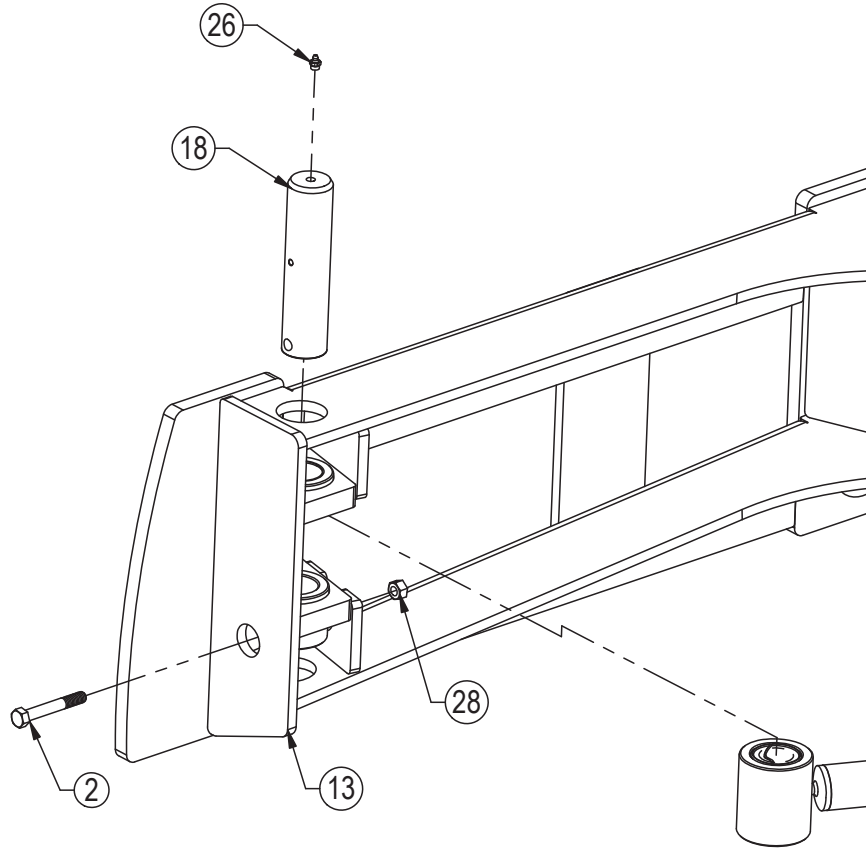
Item #A for Cat 2  
 Item #B for Cat 3N  
 Item #C for 241 System  
 \* Parts Not Shown

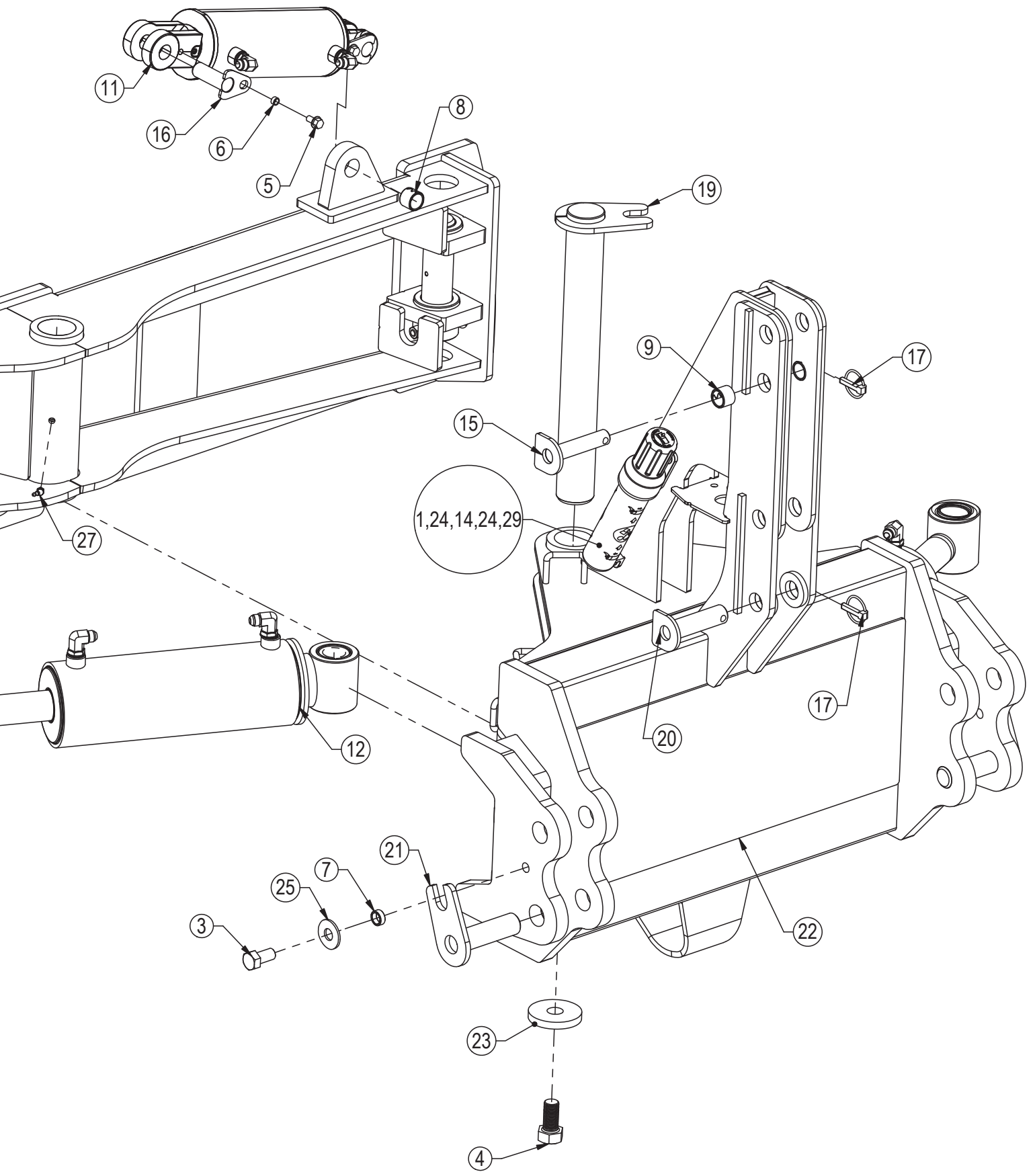
| Item No. | Qty. | Part No. | Description                        |
|----------|------|----------|------------------------------------|
| 1        | 2    | 16-20002 | 1/4" x 3/4" Hex Bolt Gr 5 NC       |
| 2        | 2    | 16-20132 | 1/2" x 3" Hex Bolt Gr 5 NC         |
| 3        | 2    | 16-20216 | 3/4" x 1-1/2" Hex Bolt Gr 5 NC     |
| 4        | 1    | 16-20558 | 1" x 2" Hex Bolt Gr 8 NC           |
| 5        | 2    | 19-13515 | 3/4" ID Non Rotating Pin Spacers   |
| 6A       | 2    | 19-7774  | 1" x 1" Spring Bushing             |
| 7C*      | 2    | 22-8813  | Quick Claw Uni Ball                |
| 8        | 2    | 26-34744 | 5 x 12 Cylinder Tube Ends (675155) |
| 9        | 1    | 34-14961 | Manual Canister                    |
| 10       | 1    | 43-16764 | 7/16" x 1-3/4" Lynch Pin           |
| 11A      | 1    | 43-11665 | Top Link Pin - Cat 2               |
| 12       | 2    | 43-16920 | Cylinder Pin                       |
| 13       | 1    | 43-16925 | Angle Pin                          |
| 14B      | 1    | 43-3287  | Top Link Pin - Cat 3N              |
| 15       | 2    | 43-3289  | Lower Lift Pin                     |
| 16       | 1    | 45-17400 | ISO Angle Frame                    |
| 17       | 1    | 57-16928 | 3.50" OD x 1.06" ID Washer         |
| 18       | 2    | 57-20740 | 1/4" Flat Washer                   |
| 19       | 2    | 57-20747 | 3/4" Flat Washer                   |
| 20       | 3    | 58-9369  | Grease Zerk 1/8" NPT Straight      |
| 21       | 2    | 70-20604 | 1/2" Hex Center Lock Nut NC        |
| 22       | 2    | 70-20610 | 1/4" Nyloc Hex Nut                 |

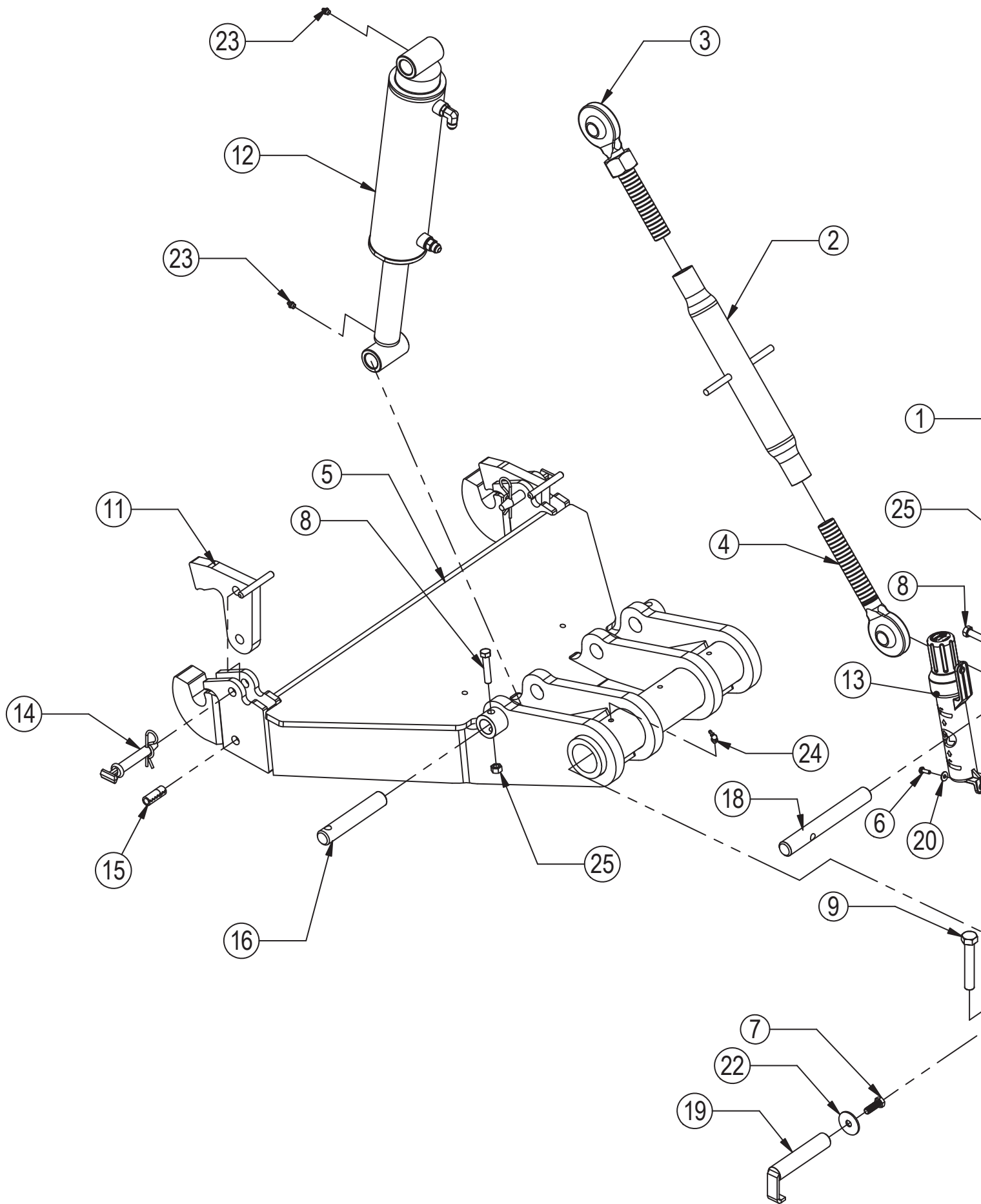
# Hydraulic Angle - Hydraulic Tilt

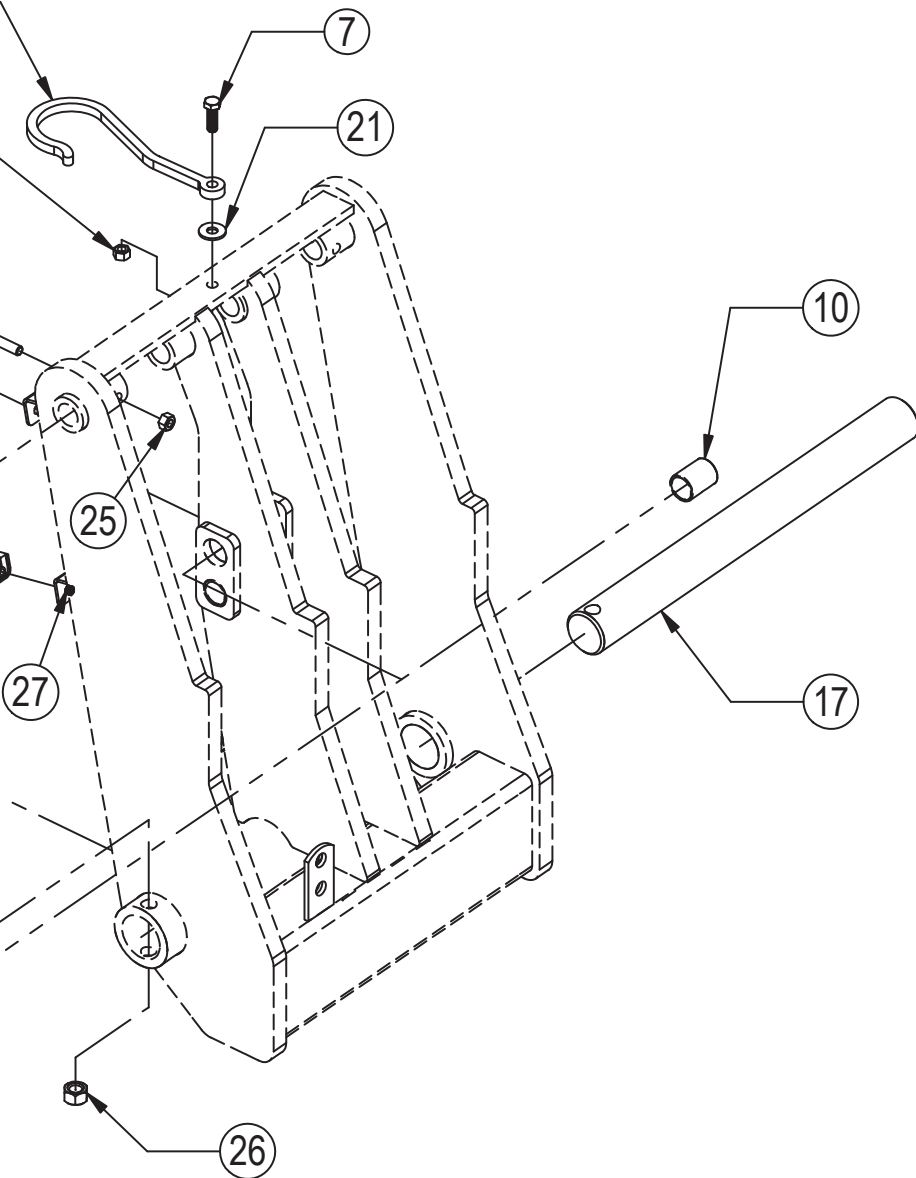
Item #A for Cat 2  
 Item #B for Cat 3N  
 Item #C for 241 System  
 \* Parts Not Shown

| Item No. | Qty. | Part No.  | Description                                 |
|----------|------|-----------|---|
| 1        | 2    | 16-20002  | 1/4" x 3/4" Hex Bolt Gr 5 NC                |
| 2        | 4    | 16-20132  | 1/2" x 3" Hex Bolt Gr 5 NC                  |
| 3        | 2    | 16-20216  | 3/4" x 1-1/2" Hex Bolt Gr 5 NC              |
| 4        | 1    | 16-20558  | 1" x 2" Hex Bolt Gr 8 NC                    |
| 5        | 2    | 16-35C612 | 3/8" x 3/4" Flanged Bolt                    |
| 6        | 2    | 16-13577  | NR Pin Spacer Clevis End                    |
| 7        | 2    | 19-13515  | 3/4" ID Non Rotating Pin Spacers            |
| 8        | 1    | 19-7774   | 1"x1" Spring Bushing                        |
| 9A       | 2    | 19-7774   | 1" x 1" Spring Bushing                      |
| 10C*     | 2    | 22-8813   | Quick Claw Uni Ball                         |
| 11       | 1    | 26-34711  | 4 x 8 Cylinder w/ Cast Clevis Ends (647134) |
| 12       | 2    | 26-34744  | 5 x 12 Cylinder Tube Ends (675155)          |
| 13       | 1    | 32-16400  | Tilt Frame                                  |
| 14       | 1    | 34-14961  | Manual Canister                             |
| 15A      | 1    | 43-11665  | Top Link Pin - Cat 2                        |
| 16       | 2    | 43-13580  | 1" Clevis Bolt in Pin                       |
| 17       | 1    | 43-16764  | 7/16" x 1-3/4" Lynch Pin                    |
| 18       | 4    | 43-16920  | Cylinder Pin                                |
| 19       | 1    | 43-16925  | Angle Pin                                   |
| 20       | 1    | 43-3287   | Top Link Pin - Cat 3N                       |
| 21       | 2    | 43-3289   | Lower Lift Pin                              |
| 22       | 1    | 45-17400  | ISO Angle Frame                             |
| 23       | 1    | 57-16928  | 3.50" OD x 1.06" ID Washer                  |
| 24       | 2    | 57-20740  | 1/4" Flat Washer                            |
| 25       | 2    | 57-20747  | 3/4" Flat Washer                            |
| 26       | 4    | 58-9369   | Grease Zerk 1/8" NPT Straight               |
| 27       | 2    | 58-9371   | Grease Zerk 1/8" NPT 45°                    |
| 28       | 4    | 70-20604  | 1/2" Hex Center Lock Nut NC                 |
| 29       | 2    | 70-20610  | 1/4" Nyloc Nut                              |



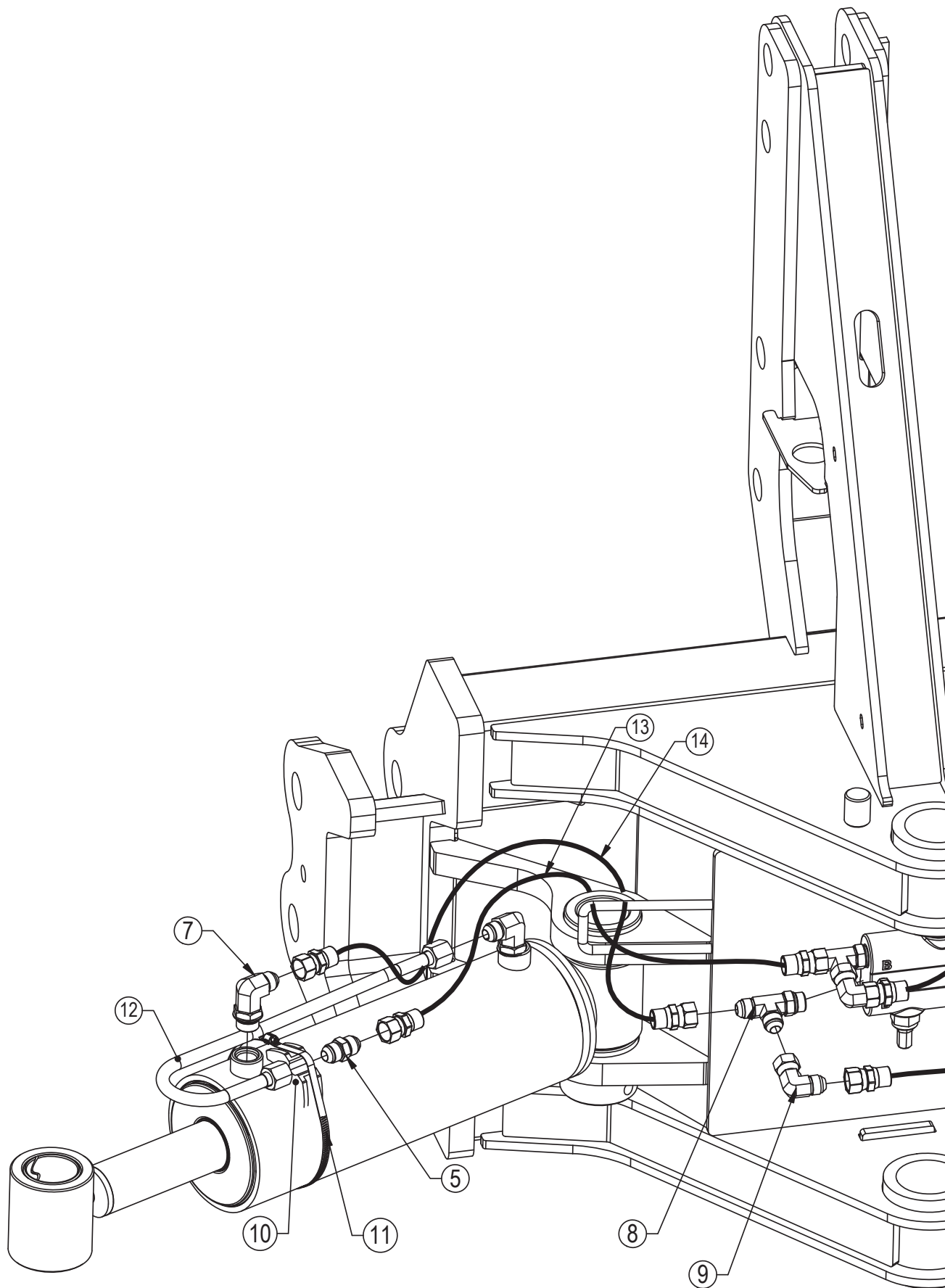






| Item No. | Qty. | Part No.   | Description                                     |
|----------|------|------------|---|
| 1        | 1    | 11-1455    | FH-400 Top Arm Hook                             |
| 2,3,4    | 1    | 11-11135   | FH-400 Pitch Control Top Arm Link               |
| 2        | 1    | 11-11137   | FH-400 Pitch Control Arm Housing                |
| 3        | 1    | 11-11136RH | FH-400 Pitch Control Arm Screw Assy- Right Hand |
| 4        | 1    | 11-11136LH | FH-400 Pitch Control Arm Screw Assy - Left Hand |
| 5        | 1    | 11-15710   | FH-400 Solid Lower Arm - V2                     |
| 6        | 2    | 16-20002   | 1/4" x 3/4" Hex Bolt Gr 5 NC                    |
| 7        | 2    | 16-20126   | 1/2" x 1-1/2" Hex Bolt Gr 5 NC                  |
| 8        | 4    | 16-20130   | 1/2" x 2-1/2" Hex Bolt Gr 5 NC                  |
| 9        | 2    | 16-20222   | 3/4" x 3" Hex Bolt Gr 5 NC                      |
| 10       | 1    | 16-20227   | 3/4" x 4-1/2" Hex Bolt Gr 5 NC                  |
| 11       | 4    | 19-3774    | 1.5"x1.25"x2.00" Spring Bushing (150125200)     |
| 12       | 2    | 19-15711   | Lower Lift Arm Bushing                          |
| 13       | 2    | 22-15701   | FH-400 Solid Lower Arm Latch                    |
| 14       | 2    | 26-34728   | 4 x 12 Cylinder Tube Ends                       |
| 15       | 1    | 34-14961   | Manual Canister                                 |
| 16       | 2    | 43-15712   | 3/4" x 3-1/4" Safety Hitch Pin                  |
| 17       | 2    | 43-8234    | Rod End Lift Cylinder Pin (1-1/4" x 7.25" )     |
| 18       | 1    | 43-8322    | Main Lift Arm Pin (2-7/16" x 25")               |
| 19       | 2    | 43-9334    | Base Cylinder Pin (1-1/4" x 10.03")             |
| 20       | 1    | 43-11471   | Top Arm/UC Pin                                  |
| 21       | 2    | 57-20740   | 1/4" Flat Washer                                |
| 22       | 1    | 57-20744   | 1/2" Flat Washer                                |
| 23       | 1    | 57-20794   | 1/2" Fender Washer (2.00" ODX .500"ID x .125")  |
| 24       | 4    | 58-9369    | Grease Zerk 1/8" NPT Straight                   |
| 25       | 3    | 58-9371    | Grease Zerk 1/8" NPT 45°                        |
| 26       | 5    | 70-20604   | 1/2" Hex Center Lock Nut Gr 2 NC                |
| 27       | 3    | 70-20607   | 3/4" Hex Center Lock Nut Gr 2 NC                |
| 28       | 2    | 70-20610   | 1/4" Nyloc Hex Nut Gr 5 NC                      |

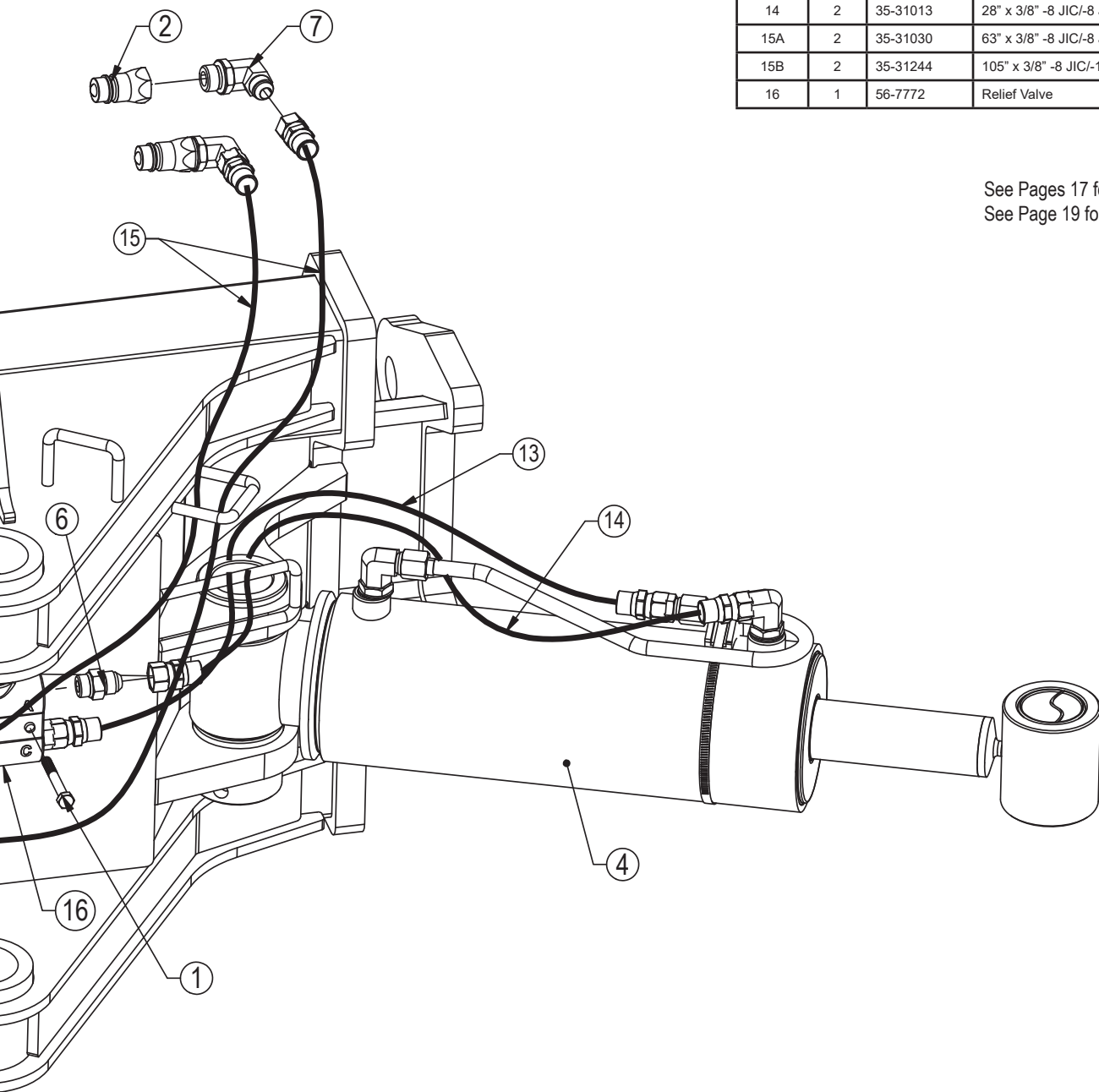
Hoses Not Drawn To Scale

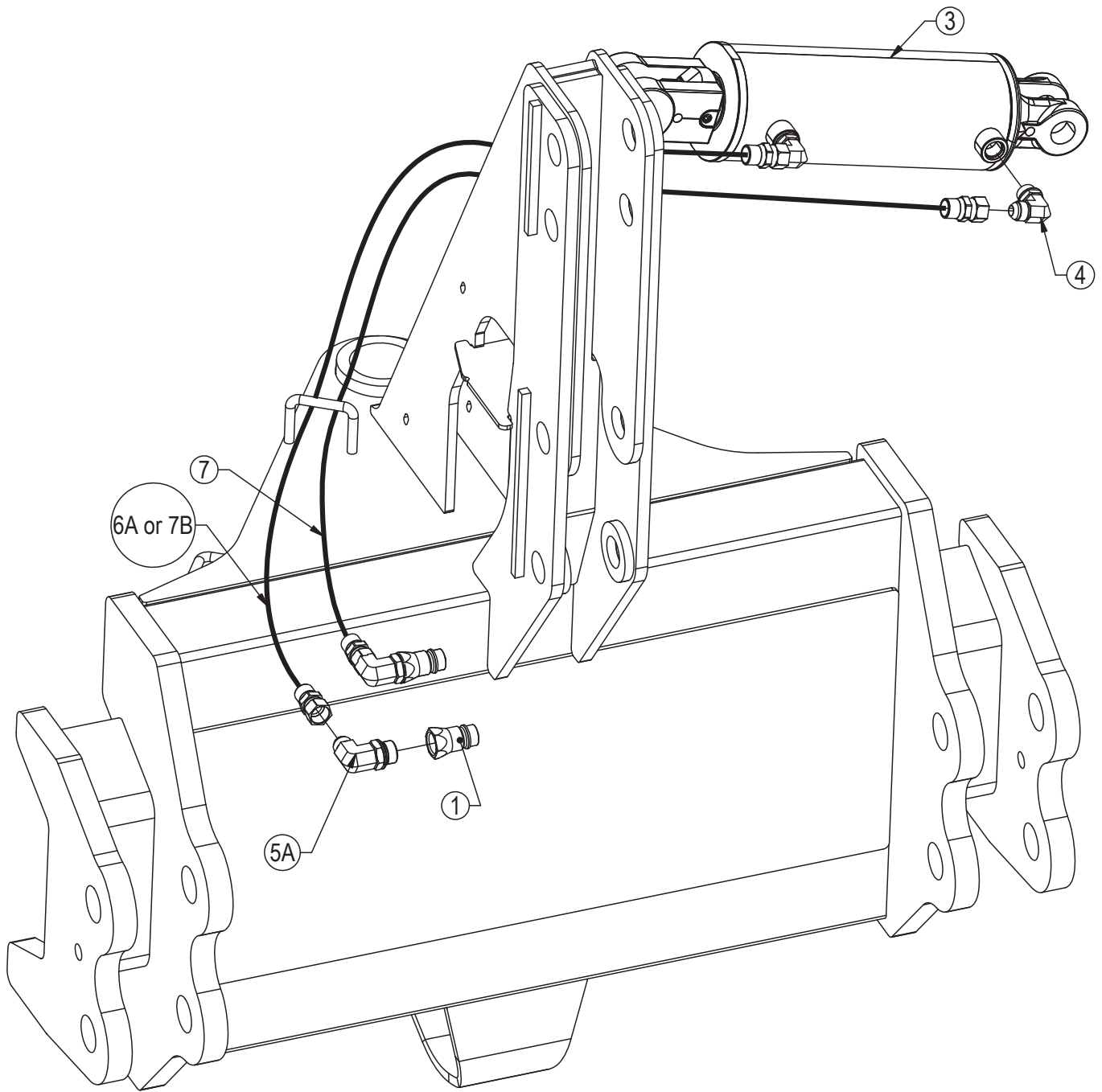


| Item No. | Qty. | Part No.     | Description  |
|----------|------|--------------|--|
| 1        | 2    | 16-20040     | 5/16" x 2-1/2" Hex Bolt Gr 5                       |
| 2        | 2    | 25-34342     | Tappet Quick Coupler - Male                        |
| 3*       | 2    | 25-3455      | Pioneer Dust Cap Angle (Red)                       |
| 4        | 2    | 26-34744     | 5 x 12 Cylinder W/ Tube Ends                       |
| 5        | 2    | 31-11699-8-8 | JIC Union (2403-8-)                                |
| 6        | 2    | 31-34040     | Straight JIC x O-Ring (6400-8-8)                   |
| 7A       | 6    | 31-34051     | Straight Thread Elbow 90° JIC x O-Ring (6801-8-10) |
| 7B       | 4    | 31-34051     | Straight Thread Elbow 90° JIC x O-Ring (6801-8-10) |
| 8        | 2    | 31-34070     | Run Tee JIC x O-Ring (6804-8-8-8)                  |
| 9        | 2    | 31-34100     | Swivel Nut Elbow 90° JIC (6500-8-8)                |
| 10       | 2    | 34-12932     | Cylinder Saddle                                    |
| 11       | 2    | 34-12933     | Hose Clamp (SAE 96)                                |
| 12       | 2    | 35-17260     | 240 Formed Steel Line                              |
| 13       | 2    | 35-31010     | 25" x 3/8" -8 JIC/-8 JIC Hose w/ Cordura (4M)      |
| 14       | 2    | 35-31013     | 28" x 3/8" -8 JIC/-8 JIC Hose w/ Cordura (4M)      |
| 15A      | 2    | 35-31030     | 63" x 3/8" -8 JIC/-8 JIC Hose w/ Cordura (4M)      |
| 15B      | 2    | 35-31244     | 105" x 3/8" -8 JIC/-10 MB Hose w/ Cordura (4M)     |
| 16       | 1    | 56-7772      | Relief Valve                                       |

Item #A for 240 System  
 Item #B for 241 System  
 \* Parts Not Shown

See Pages 17 for the remaining hydraulics.  
 See Page 19 for hydraulic schematic.





Item #A for 240 System

Item #B for 241 System

\* Parts Not Shown

Hoses Not Drawn To Scale

| Item No. | Qty. | Part No. | Description  |
|----------|------|----------|--|
| 1        | 2    | 25-34342 | Tappet Quick Coupler - Male                        |
| 2*       | 2    | 25-3453  | Pioneer Dust Cap Tilt (Green)                      |
| 3        | 1    | 26-34711 | 4 x 8 Cylinder W/ Cast Clevis Ends                 |
| 4        | 2    | 31-34050 | Straight Thread Elbow 90° JIC x O-Ring (6801-8-8)  |
| 5A       | 2    | 31-34051 | Straight Thread Elbow 90° JIC x O-Ring (6801-8-10) |
| 6A       | 1    | 35-31030 | 63" x 3/8" -8 JIC/-8 JIC Hose w/ Cordura (4M)      |
| 7A       | 1    | 35-31032 | 69" x 3/8" -8 JIC/-8 JIC Hose w/ Cordura (4M)      |
| 7B       | 2    | 35-31244 | 105" x 3/8" -8 JIC/-10 MB Hose w/ Cordura (4M)     |

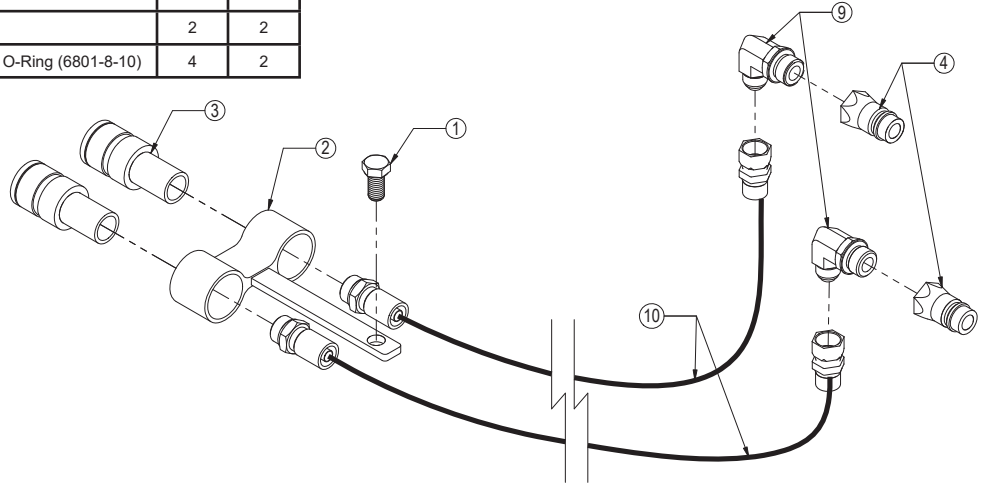
See Pages 17 for the remaining hydraulics.

See Page 19 for hydraulic schematic.



| Item No. | Part No. | Description  | Configuration | HAHT | HANT |
|----------|----------|--|---------------|------|------|
| 1        | 16-20126 | 1/2" x 1-1/2" Hex Bolt Gr 5 NC                     |               | 2    | 1    |
| 2        | 18-8973  | Coupler Mounting Bracket                           |               | 2    | 1    |
| 3        | 25-34321 | Tappet Quick Coupler Female                        |               | 4    | 2    |
| 4        | 25-34342 | Tappet Quick Coupler - Male                        |               | 4    | 2    |
| 5*       | 25-3453  | Pioneer Dust Cap Tilt (Green)                      |               | 2    | -    |
| 6*       | 25-3454  | Pioneer Dust Plug Tilt (Green)                     |               | 2    | -    |
| 7*       | 25-3455  | Pioneer Dust Cap Angle (Red)                       |               | 2    | 2    |
| 8*       | 25-3456  | Pioneer Dust Plug Angle (Red)                      |               | 2    | 2    |
| 9        | 31-34051 | Straight Thread Elbow 90° JIC x O-Ring (6801-8-10) |               | 4    | 2    |

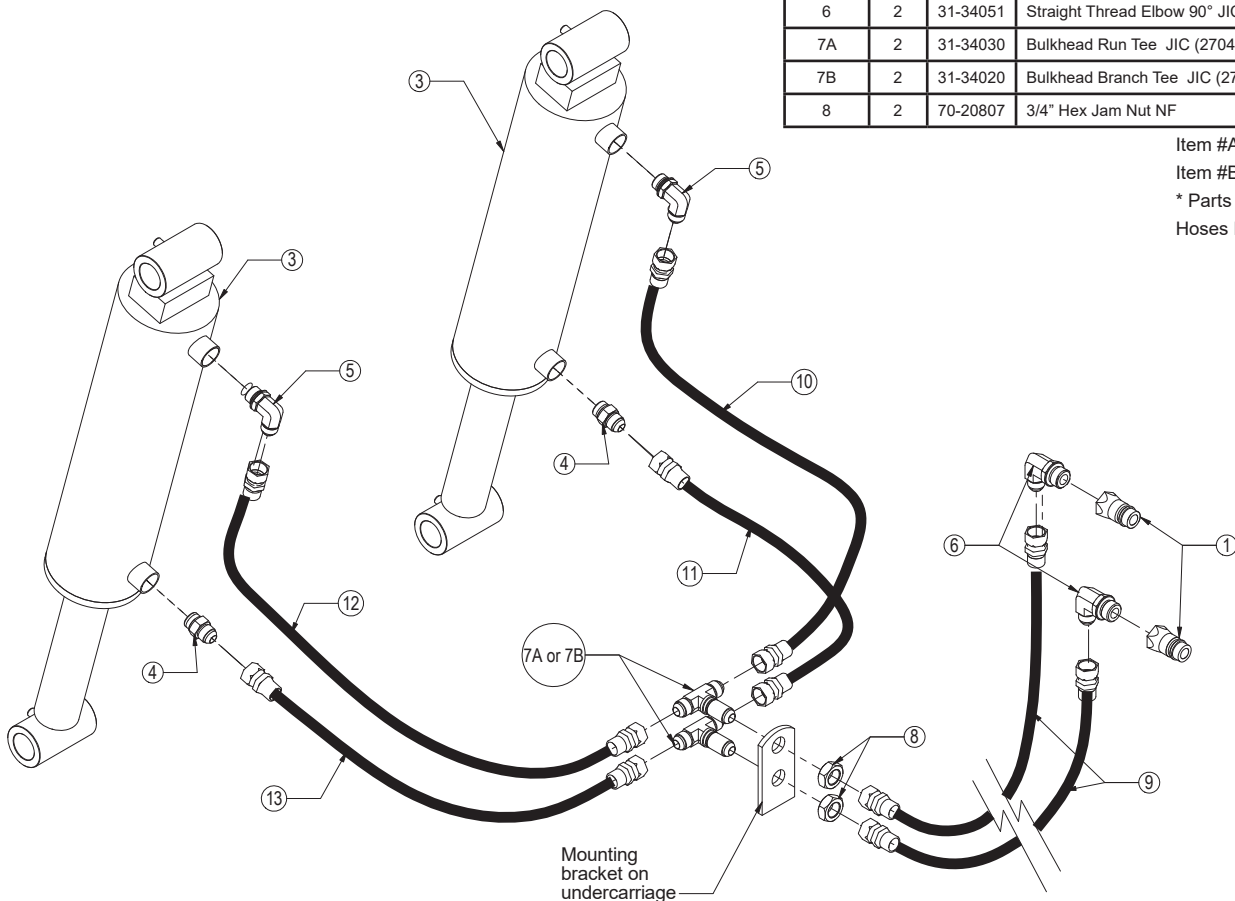
\* Parts Not Shown  
Hoses Not Drawn to Scale

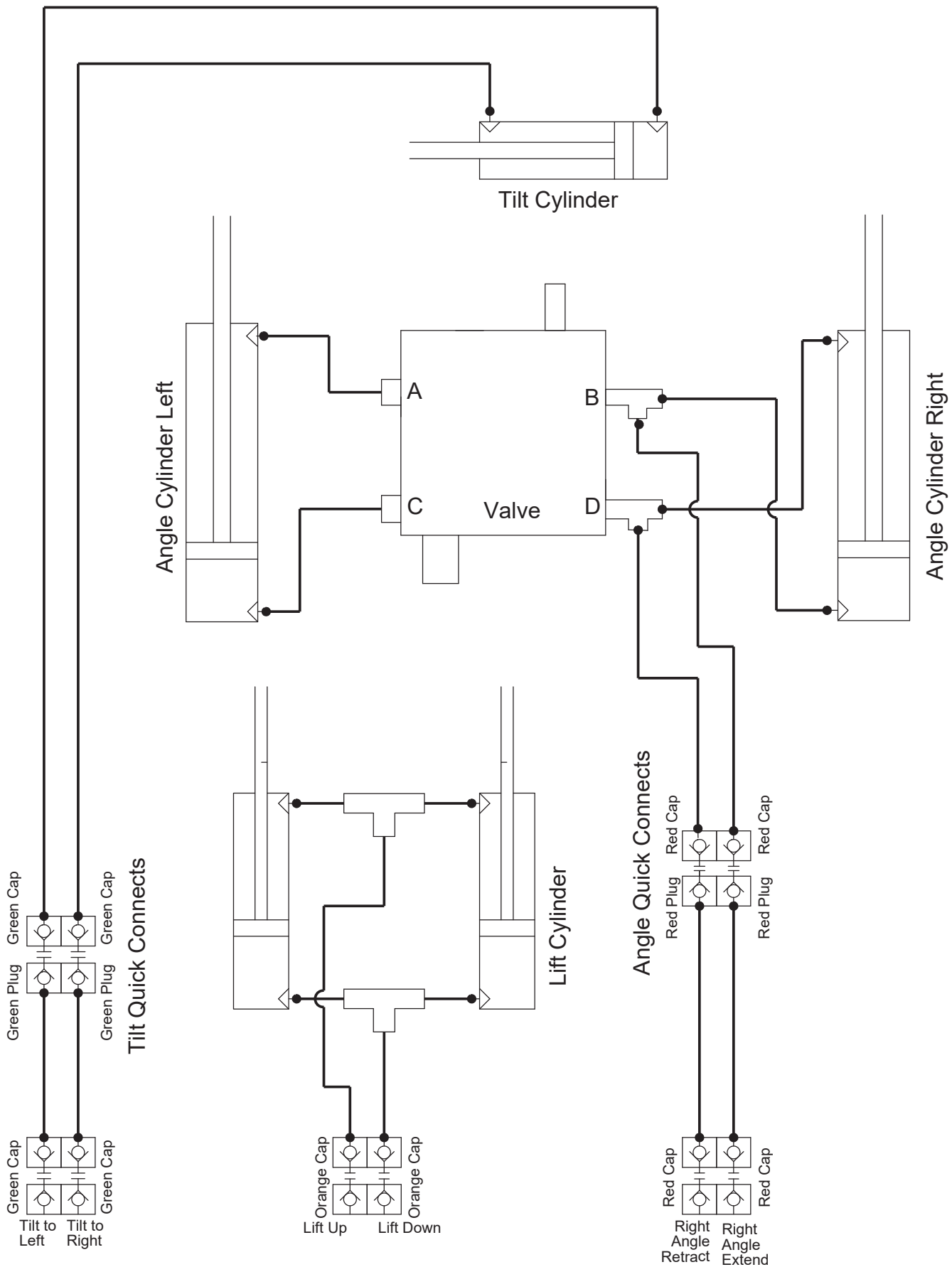


See Page 19 for hydraulic schematic.

| Item No. | Qty. | Part No. | Description  |
|----------|------|----------|--|
| 1        | 2    | 25-34342 | Tappet Quick Coupler - Male                        |
| 2*       | 2    | 25-3457  | Pioneer Dust Cap Lift (Orange)                     |
| 3        | 2    | 26-34728 | 4 x 12 Cylinder W/ Tube Ends                       |
| 4        | 2    | 31-34040 | Straight JIC x O-Ring (6400-8-8)                   |
| 5        | 2    | 31-34050 | Straight Thread Elbow 90° JIC x O-Ring (6801-8-8)  |
| 6        | 2    | 31-34051 | Straight Thread Elbow 90° JIC x O-Ring (6801-8-10) |
| 7A       | 2    | 31-34030 | Bulkhead Run Tee JIC (2704-8-8-8)                  |
| 7B       | 2    | 31-34020 | Bulkhead Branch Tee JIC (2703-8-8-8)               |
| 8        | 2    | 70-20807 | 3/4" Hex Jam Nut NF                                |

Item #A for 240 System  
Item #B for 241 System  
\* Parts Not Shown  
Hoses Not Drawn To Scale





Female Quick Connects  
At Rear Of Tractor

A large, empty rectangular box with a thin black border, occupying most of the page. It is intended for the user to write their notes.

# Contact Us

---

---

As always, if you have any questions about your 240I & 241I Dozer or other products made by Grouser, feel free to contact us.

## **Grouser Products**

755 2nd Ave NW - West Fargo, ND 58078

**Phone:** 1-800-747-6182

**Fax:** 1-701-282-8131

**E-mail:** [grouser@grouser.com](mailto:grouser@grouser.com)

**Website:** [www.grouser.com](http://www.grouser.com)

# Improvements

---

---

Grouser Products Inc. is continually striving to improve its products. We reserve the right to change prices, specification, or equipment at any time without notice. We also reserve the right to make improvements or changes when it becomes practical and possible to do so without incurring any obligation to make changes or additions to the equipment sold previously.

# Warranty

---

---

Grouser Products warrants to the original purchaser of each item that the product be free from defects in material and workmanship under normal use and service for a period of one year. If such equipment is found to be defective within one year, it is the obligation of Grouser Products under this warranty to repair or replace (exclusive of the cost of labor and transportation), any equipment or parts, in the judgment of Grouser Products to be defective in material or workmanship.

All equipment or parts claimed to be defective in material or workmanship must be made available for inspection at the place of business of a dealer authorized to handle the equipment covered by this warranty, or, upon request by Grouser Products, shipped to the Grouser Products factory in West Fargo, North Dakota. Grouser Products shall have no obligation to bear the cost of labor or transportation in connection with replacement or repair of any such defective parts in the setup process.

This warranty covers only defects in material and workmanship. It does not cover depreciation or damage caused by normal wear, accident, improper assembly, improper adjustments, improper maintenance including lack of proper lubrication, or improper use. Therefore, Grouser Products liability under this warranty shall not be effective or actionable unless the equipment is assembled, maintained and operated in accordance with the operating instructions accompanying the equipment. Grouser Products shall have no liability if the equipment has been altered or reworked without the written authorization of Grouser Products.

Grouser Products' parts, which are furnished under this warranty and properly installed, shall be warranted to the same extent as the original parts under this warranty if, and only if, such parts are found to be defective within the original warranty period covering the original equipment.

