



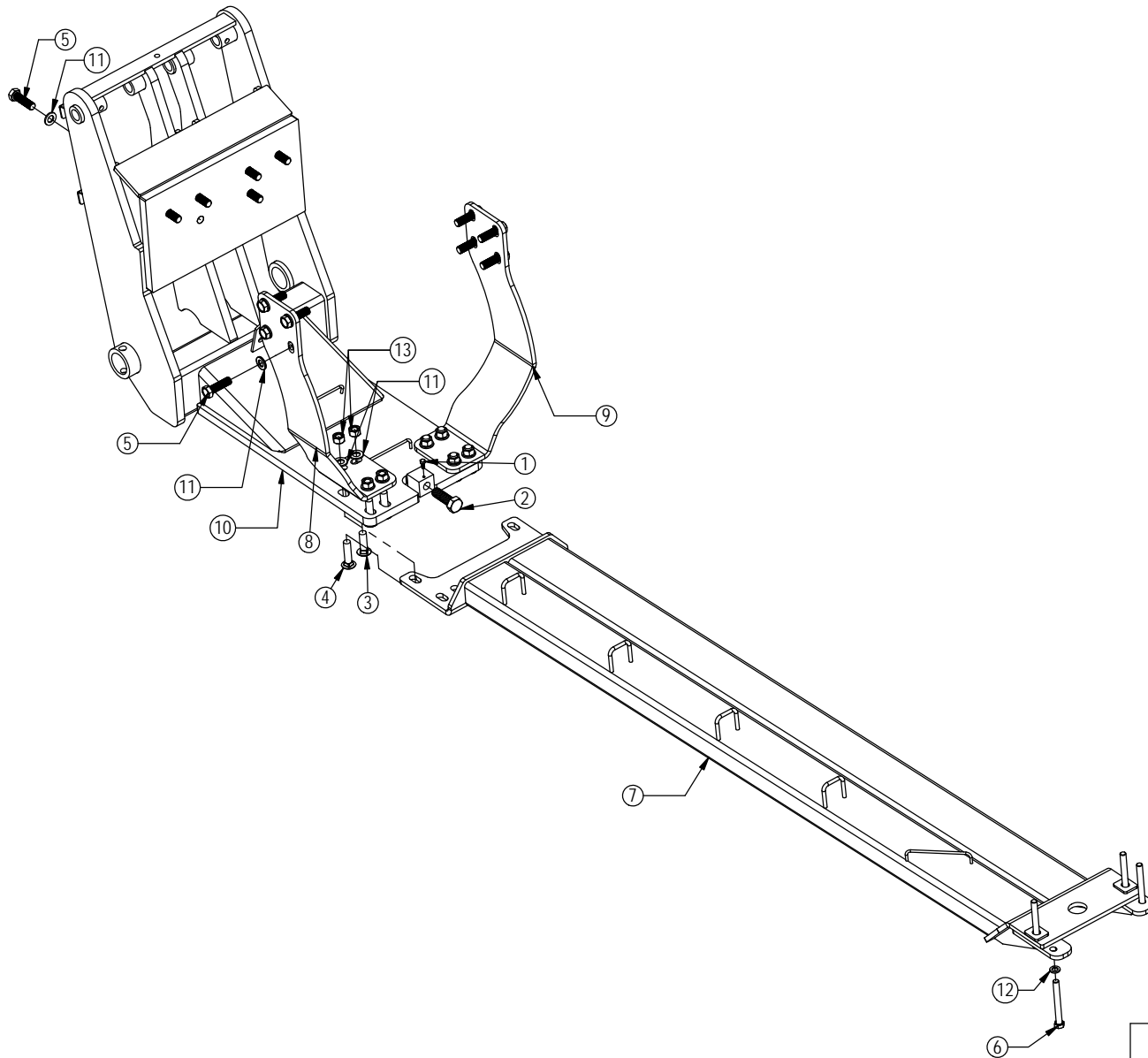
FH-400 Case Maxxum Series

Undercarriage Installation Instructions

Caution:

- Always use precaution when working around any equipment.
- Always wear safety glasses.
- Follow tractor manufacturer's safety guidelines when installing this product.
 1. Read all instructions prior to installation.
 2. Remove weights and weight bracket from front of tractor if necessary.
 3. Install a 1" x 3" bolt into the threaded block on the end of the undercarriage. Turn the 1" bolt in for installation. The bolt will be adjusted after the push pole is installed. See the attached diagram for proper installation of the bolt.
 4. Remove the 4 bolts from each side of the tractor frame behind the front axle where the front side plates will be attached. The side brace plates or loader bracket plates will be left in place.
 5. Position the undercarriage in front of axle and center with the frame of the tractor.
 6. Lift the U/C until the front holes on the tractor line up with the front holes on the undercarriage.
 7. Start 6 - 20mm x 70mm bolts with a 3/4" flat washer on each bolt through the holes of the undercarriage into the front holes of the tractor.
 8. Attach each of the side plates to the side of the tractor frame with 4 - 20mm x 70mm bolts and a 3/4" flat washer on each bolt. See attached diagram for proper orientation of the side plates.
 9. Attach each of the side plates to the top of the rear undercarriage with a 3/4" x 2-1/2" carriage bolt from the bottom and a 3/4" flat washer and a 3/4" center lock nut in the inner most forward holes on each side. See attached diagram for proper installation of bolts.
 10. Support the drawbar mount and remove the 4 outer drawbar mount bolts. Leave the 3 center most bolts in.
 11. Attach the push pole under the rear of the undercarriage and the side plates with 6 - 3/4" x 3" carriage bolts, a 3/4" flat washer and a 3/4" center lock nut on each bolt. See attached diagram for proper orientation of the push pole.
 12. Lift the rear of the push pole up and attach to the drawbar mount with a 16mm x 140mm bolt and a 16mm washer where the bolts were removed in step #10. Finger tighten only.
 13. Once all bolts are installed, torque the front 20mm bolts to 432 ft-lbs. and then the 20mm bolts on the side to 432 ft-lbs.
 14. Torque only the 2 - 3/4" bolts holding the side plates to the undercarriage to 257 ft-lbs.
 15. Push the push pole back tight against the drawbar bracket. Torque the 16mm bolts at the rear of the push pole to 280 ft-lbs.
 16. Unscrew the 1" x 3" bolt at the rear of the undercarriage until it is tight against the push pole. Torque the 1" bolt to 90-95 ft-lbs.
 17. Install a 5/16" x 3/4" bolt into the block at the rear of the undercarriage to lock the 1" bolt in place. Torque the 5/16" bolt to 19 ft-lbs.
 18. Torque the 3/4" bolts holding the side plates and the push pole to the undercarriage to 257 ft-lbs.
 19. After first 8 hours of use, re-torque all bolts.
 20. Check all fasteners regularly to ensure proper operation of equipment.

THE INFORMATION CONTAINED IN THIS DRAWING IS THE SOLE PROPERTY OF GROUSER PRODUCTS INC ANY REPRODUCTION IN PART OR WHOLE WITHOUT THE WRITTEN PERMISSION OF GROUSER PRODUCTS INC IS PROHIBITED.



ITEM NO.	PART NO.	QTY.	DESCRIPTION
1	16-20032	1	5/16" x 3/4" Hex Bolt Gr 5 NC
2	16-20562	1	1" x 3" Hex Bolt Gr.8 NC
3	16-21220	2	3/4" x 2.50" Carriage Bolt Gr.5
4	16-21222	6	3/4" x 3.00" Carriage Bolt Gr.5
5	16-1876	14	20mm x 2.5mm x 70mm Gr. 10.9 Hex Bolt
6	16-18985-140	4	16mm x 1.50mm x 140mm Metric Hex Bolt Gr 12.9 Fine
7	18-19327	1	Push Pole
8	44-19334-L	1	Side Plate
9	44-19334-R	1	Side Plate
10	54-19340	1	Undercarriage Weld
11	57-20757	22	3/4" Flat Washer - 1-1/2" OD
12	57-20825	4	16mm Flat Washer
13	70-20607	8	3/4" Hex Center Lock Nut NC



GROUSER PRODUCTS INC.

755 2nd Ave NW Phone 701.282.7710
 West Fargo, ND 58078 Fax 701.282.8131
 WWW.GROUSER.COM

TITLE: Case Maxxum

Date: 1/4/2016

DWG. NO.: 19340-A