



Ag Pro Plus

Undercarriage Installation Instructions

Case STX & Steiger Standard Frame NH TJ, T9000 Small Frame

For Models:

Case: 275, 280, 325, 330, 335

New Holland: TJ275, TJ280, TJ325, TJ330,
T9020

Purchase Date
Serial Number
Model Number
Tractor Model
Dealer

To The Owner

This manual contains information concerning the installation of the undercarriage. You have purchased dependable, long lasting equipment, but only by proper care and operation can you expect to receive the performance and long service built into our products. Please read this manual carefully and keep the manual available for ready reference. If you have any questions or concerns, contact Grouser Products.

Caution:

- Always use caution when working around any equipment.
- Always wear safety glasses.
- Follow tractor manufacturer's safety guidelines when installing this product.
- Use paint where necessary to prevent rust.
- Do not modify or permit anyone else to modify or alter the equipment and its components without first consulting Grouser Products.

Note:

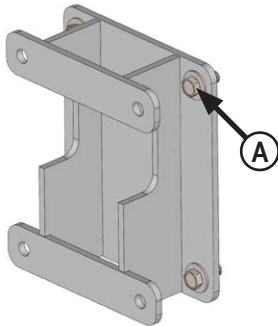
- Read all instructions prior to performing installation.
- When installing hardware, only finger tighten until all hardware is in place.
- A full diagram of the assembly with the full list of parts is on pages 4-5.
- Unstrap and remove any components that are attached for shipping.



Serial Number Location

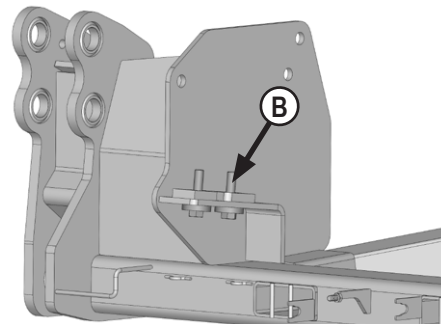
Undercarriage Installation

1. Remove existing toolboxes, front weights, and tow cable holder if equipped.

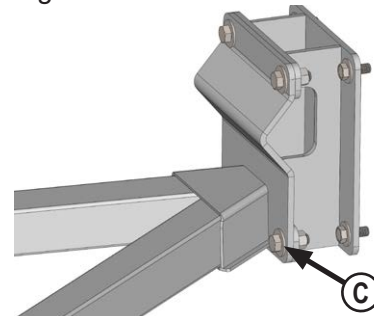


2. Attach the spacer to the front side of the axle with 4 - 20mm x 50mm bolts and 4 - 3/4" flat washers (A). Finger tighten the bolts.
3. Position the undercarriage under the tractor and center on the frame of the tractor.

NOTE: When lifting the undercarriage, watch for any potential pinching of hoses or any other components to prevent any damage.

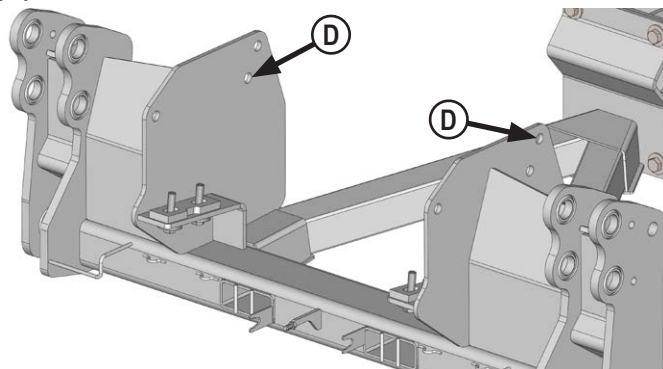


4. Raise the front of the undercarriage to within 1/2" from the frame of the tractor.
5. Install 4 - 20mm x 90mm and 4 - 7/8" ID washers into the bottom vertical slots at the front of the undercarriage (B). Tighten the bolts until the washers contact the undercarriage.



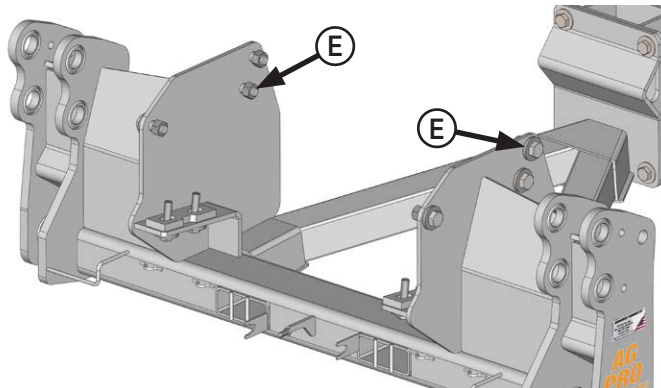
6. Attach the rear of the undercarriage to the installed rear spacer with 4 - 7/8" x 2-1/2" bolts, 8 - 7/8" flat washers, and 4 - 7/8" nuts (C).

7. Torque the rear 20mm bolts to 432 ft-lbs (A).
8. Torque the rear 7/8" bolts to 600 ft-lbs (C).
9. Torque the front vertical 20mm bolts to 432 ft-lbs (B).



10. Use the side frame holes as guides and drill 6 - 1" holes through the side of the tractor frame (D).

Note: When drilling, be aware of all parts behind the material being drilled so that you do not mistakenly hit or puncture components on engine side of tractor frame.



11. Attach the side of the undercarriage to the tractor frame with 6 - 1" x 2-1/2" bolts, 6 - 1" ID washers, and 6 - 1" nuts through the previously drilled holes (E).

12. Torque the side 1" bolts 903 ft-lbs (E).

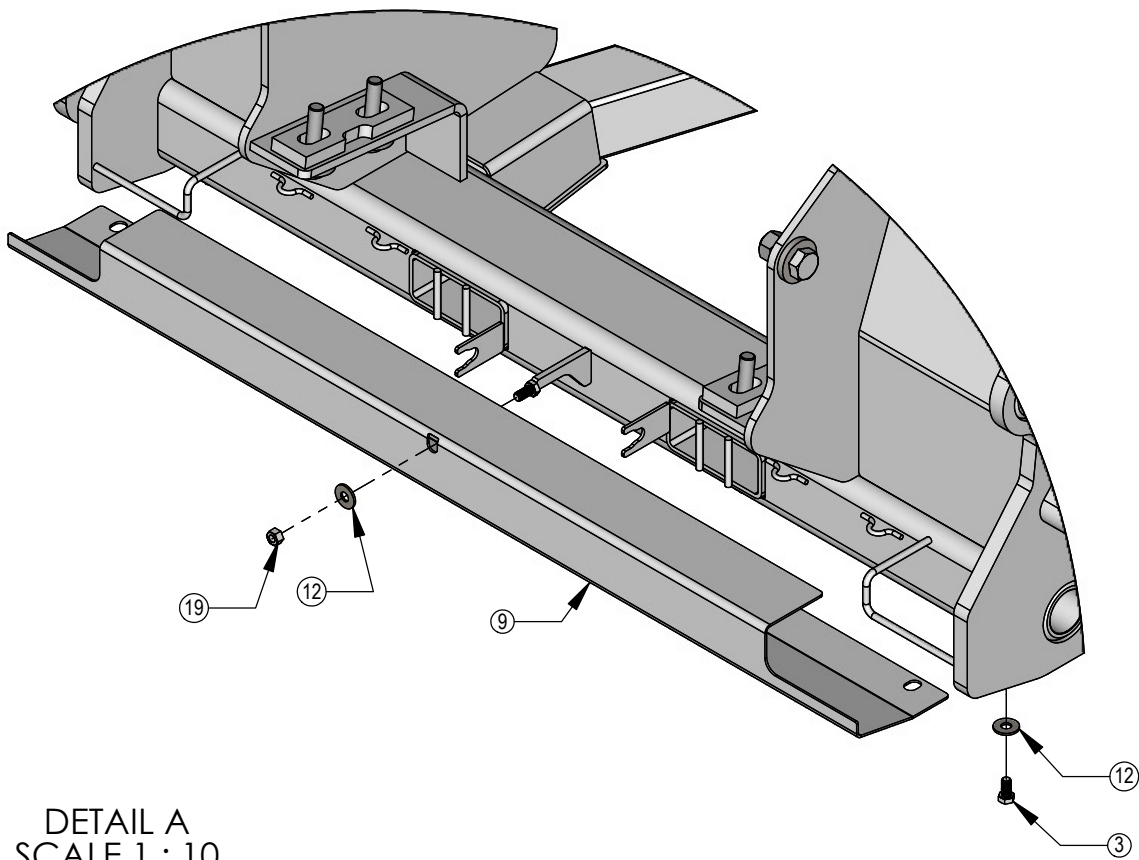
Note: Installer is responsible to route hoses in a practical manner. The hoses need to be routed away from sharp and moving objects and need to be secure. Install all hoses when assembling the lift system in the Owner's Manual and Parts Book.

Maintenance

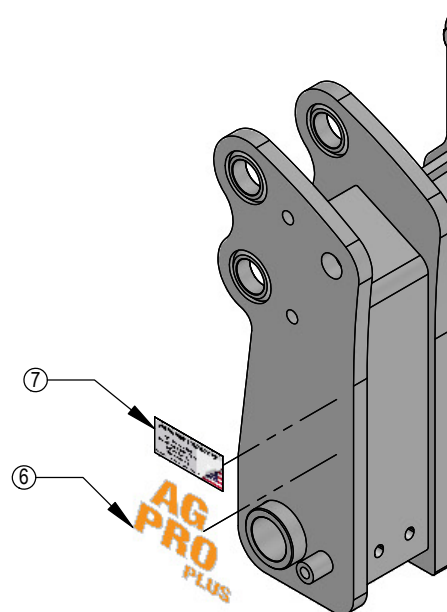
1. After first 8 hours of use, re-torque all bolts.
2. Check all fasteners regularly to ensure proper operation of equipment.
3. Inspect all equipment for existing or potential damages every 10 hours or less.
4. Make sure all non-rotating pins are secured properly.
5. Lubricate all joints with high quality grease.

Assembling Lift Components

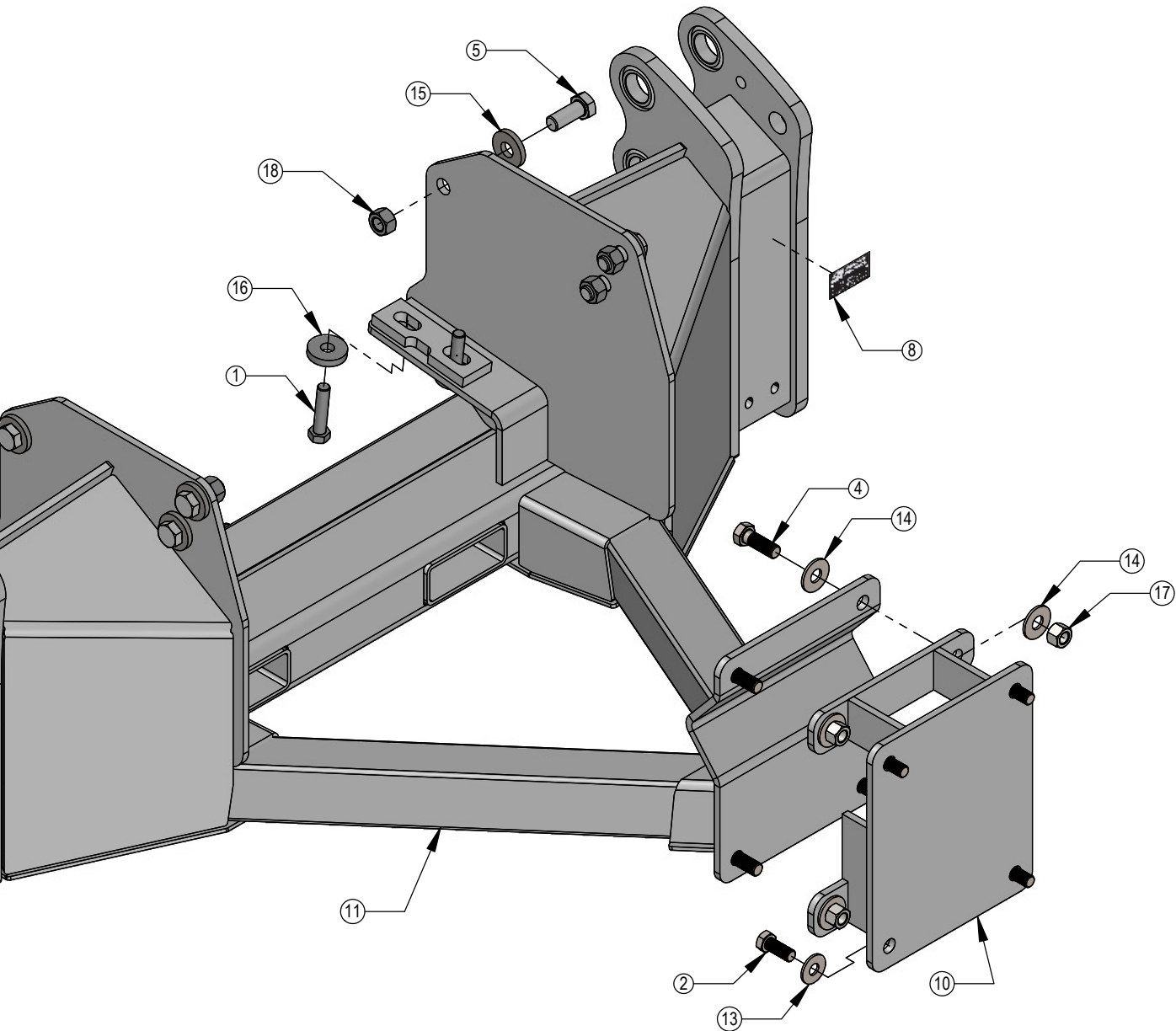
Refer to the Blade Owner's Manual & Parts Book for instructions on how to assemble the lift components.



DETAIL A
SCALE 1 : 10



ITEM NO.	QTY.	PART NO.	DESCRIPTION
1	4	16-1510	20mm x 2.5mm x 90mm Hex Bolt
2	4	16-1878	20mm x 2.5mm x 50mm Gr. 10.9 Hex Bolt
3	4	16-20124	1/2" x 1" Hex Bolt Gr.5 NC
4	4	16-20540	7/8" x 2-1/2" Hex Bolt Gr 8 NC
5	6	16-20560	1" x 2-1/2" Gr.8 NC Hex Bolt
6	2	27-18880	Ag Pro Plus Decal
7	1	27-18887	Grouser Name Plate Decal
8	1	NA	Grouser Dozer Metal Serial Tag
9	1	44-40504	Plate, Cover
10	1	54-1717	Spacer
11	1	54-19945	Undercarriage Weld
12	5	57-20744	1/2" Flat Washer
13	4	57-20747	3/4" Flat Washer
14	8	57-20818	7/8" Flat Washer Heavy Duty Gr 8 (USS)
15	6	57-3682	1.00" ID x 2-1/2" OD x .375" Heavy Washer CZ Plated
16	4	57-8836	7/8" x 2-1/2" x 1/2" Flat Washer
17	4	70-20598	7/8" Hex Nut Gr 8 NC
18	6	70-20599	1" Hex Nut Gr 8 NC
19	1	70-20604	1/2" Center Lock Hex Nut



DWG. NO.: 19945-A

Improvements

Grouser Products Inc. is continually striving to improve its products. We reserve the right to change prices, specification, or equipment at any time without notice. We also reserve the right to make improvements or changes when it becomes practical and possible to do so without incurring any obligation to make changes or additions to the equipment sold previously.

Warranty

Grouser Products warrants to the original purchaser of each item that the product be free from defects in material and workmanship under normal use and service for a period of **two (2) years for Agriculture Series Blades and one (1) year for Heavy Duty Series from date of original retail delivery.**

The obligation of the consumer under this warranty:

1. To read the operators manual and to operate, lubricate, maintain and store equipment in accordance with the instructions listed in the operators manual.
2. To inspect equipment and if any part needs repair or replacement when continued use would cause damage or wear to other parts or safety.
3. All equipment or parts claimed to be defective in material or workmanship must be made available for inspection at the place of business of a dealer authorized to handle the equipment covered by this warranty, or, upon request by Grouser Products, shipped to the Grouser Products factory in West Fargo, North Dakota.

The obligation of the dealer under this warranty:

1. Complete warranty registration form and submit within 30 days of sale.
2. Contact Grouser Products for authorization prior to performing any warranty repairs or part replacement.
3. Complete warranty request form and submit with photos and supporting documentation.

The obligation of Grouser Products under this warranty:

1. Repair or replace, any equipment or parts, in the judgment of Grouser Products to be defective in material or workmanship.
2. Grouser Products will cover the cost of parts and ground shipping at dealer invoice only.
3. Grouser Products shall have no obligation to bear the cost of labor or transportation in connection with replacement or repair of any such defective parts.

This warranty does not cover:

1. Depreciation or damage caused by normal wear, accident, improper assembly, improper adjustments.
2. Improper maintenance including lack of proper lubrication, or improper use. Including loose bolts, nuts, or fitting due to over tightening or vibration after 20 hours of operation.
3. Repairs or alterations without authorization from a Grouser Products representative.
4. Grouser Products shall have no liability if the equipment has been altered or reworked without the written authorization of Grouser Products.

Grouser Products' parts, which are furnished under this warranty and properly installed, shall be warranted to the same extent as the original parts under this warranty if, and only if, such parts are found to be defective within the original warranty period covering the original equipment.

NO EMPLOYEE OR REPRESENTATIVE OF GROUSER PRODUCTS IS AUTHORIZED TO CHANGE THE WARRANTY IN ANY WAY OR GRANT ANY OTHER WARRANTY.

Contact Us

As always, if you have any questions about your system or other products made by Grouser, feel free to contact us.



755 2nd Ave NW - West Fargo, ND 58078
+1 701-282-7710 | info@grouser.com
www.grouser.com