



Case Steiger & New Holland Ag Pro Undercarriage Installation Instructions

For Models:

Case Steiger: 350, 370, 400, 420, 450, 470

New Holland: T9.390, T9.435, T9.450, T9.480,
T9.505, T9.530, T9.560, T9.565

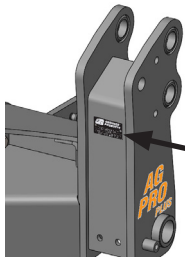
Purchase Date
Serial Number
Model Number
Tractor Model
Dealer

To The Owner

This manual contains information concerning the installation of the undercarriage. You have purchased dependable, long lasting equipment, but only by proper care and operation can you expect to receive the performance and long service built into our products. Please read this manual carefully and keep the manual available for ready reference. If you have any questions or concerns, contact Grouser Products.

Caution:

- Always use caution when working around any equipment.
- Always wear safety glasses.
- Follow tractor manufacturer's safety guidelines when installing this product.
- Use paint where necessary to prevent rust.
- Do not modify or permit anyone else to modify or alter the equipment and its components without first consulting Grouser Products.



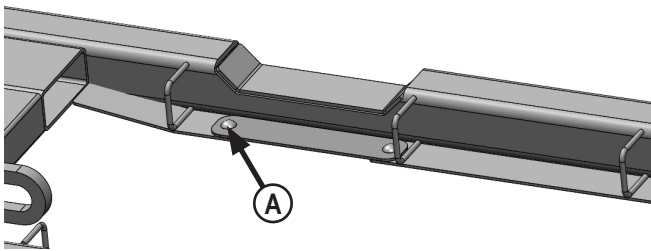
Serial Number Location

Note:

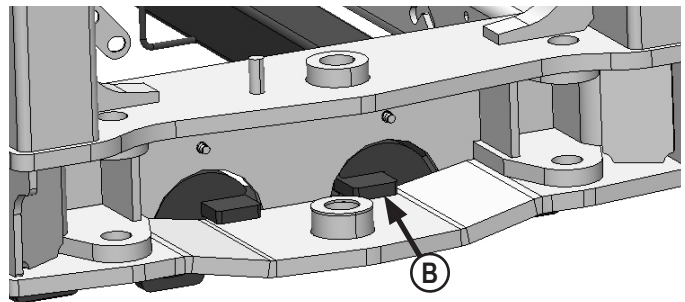
- Read all instructions prior to performing installation.
- When installing hardware, only finger tighten until all hardware is in place.
- A full diagram of the assembly with the full list of parts is on pages 6-7.
- Tractor frame not shown in some diagrams for clarity.
- Unstrap and remove any components that are attached for shipping.
- Refer to Page 8 for a diagram of the undercarriage assembly on the tractor if further clarification of location on the tractor is needed.

Undercarriage Installation

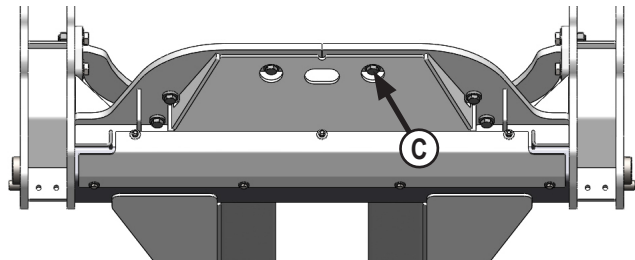
1. If applicable, remove front weights, weight bracket, and toolbox. If a tow cable kit was purchased from Grouser, the tow cable will be reinstalled in a later step.
2. Remove brackets from the undercarriage to make room for installing the undercarriage on the tractor and unscrew the 1" vertical bolts at the rear of the undercarriage.



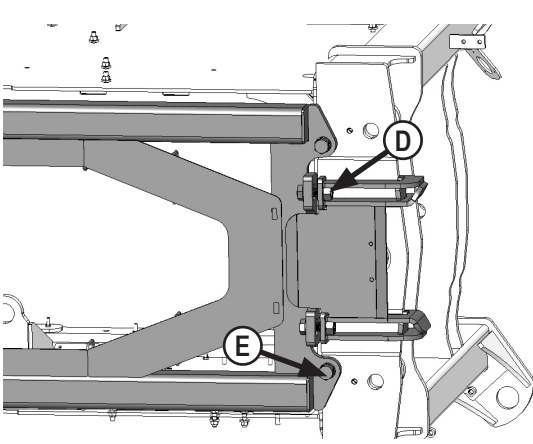
3. Install bolt in hose guard on the right side of the undercarriage with 2 - 1/2" x 1" carriage bolts and 2 - 1/2" center lock nuts (A).
4. Position undercarriage under tractor, center on the frame of the tractor.



5. Lift the rear of the undercarriage up and set the top plates at the rear of the undercarriage on the tractor cross member (B). Push the undercarriage back until the vertical push plates are firmly against the cross member.



6. Lift the front of the undercarriage up and install 8 - 20mm x 90mm bolt, 8 - 0.375" thick washers, 8 - 3/4" hardened washers and 8 - 20mm nuts through the front slots of the undercarriage that line up with the vertical holes on the tractor frame (C). Install the bolts from the bottom.
7. Verify that the rear of the undercarriage is still firmly against the cross member.



8. At the rear of the undercarriage and pivot area of the tractor, hook the rear hose routing bracket to the tractor frame and bolt to the rear of the undercarriage with 2 - 1" x 3" bolts, 2 - 1" hardened washers, and 2 - 1" nuts. The nut will fit between the plates on the brackets (D).

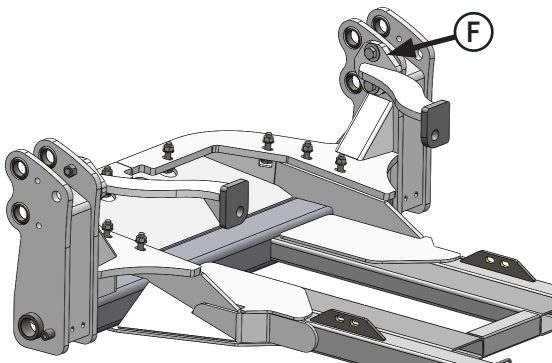
9. Center the bracket on the undercarriage and tractor as close as you can.

10. Torque the 1" bolts on the bracket to 500 ft-lbs. There can be a gap between the bracket and the undercarriage.

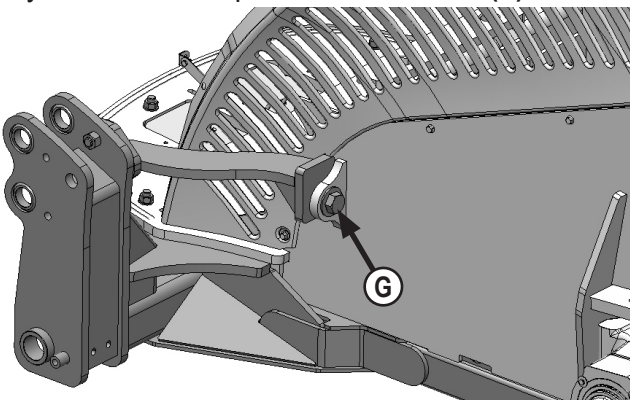
11. Tighten the 1" x 2" vertical at the rear of the undercarriage (E).

12. Torque the rear vertical 1" bolts to 100 ft-lbs.

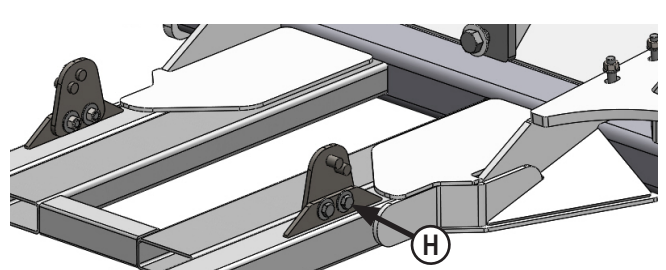
13. Torque the front vertical 20mm bolts to 432 ft-lbs.



14. Attach the front upper support arms to the undercarriage with 4 - 1" x 3-1/4" bolts, 4 - 1" hardened flat washers, and 2 - 1" nuts. 1" nuts are only used on the top bolt on each side (F).



15. Attach the front upper support arms to the tractor with 2 - 1-1/4" x 4-1/2" bolts, 2 - 1-1/4" flat washers, and 2 - 1-1/4" nuts (G).

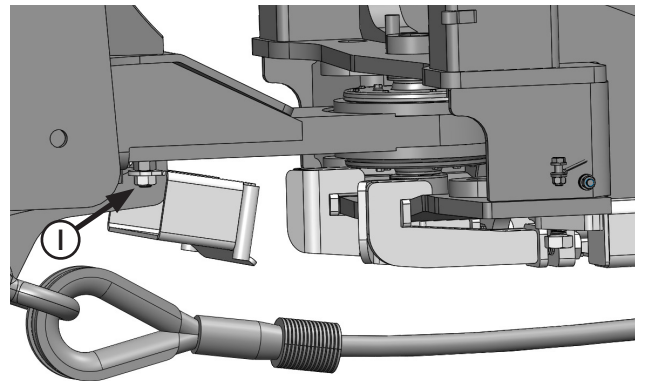


16. Install the front side tube bracket on each side of the undercarriage. The pins on the bracket will fit into the chain down hook on the inside of the tractor frame. Attach to the undercarriage with 4 - 3/4" x 2" bolts, 8 - 3/4" flat washers, and 4 - 3/4" lock nuts (H).

17. Torque the upper support arm 1-1/4" bolts to 1,105 ft-lbs.

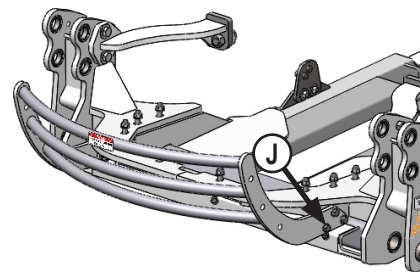
18. Torque the upper support arm 1" bolts to 903 ft-lbs.

19. Torque the side tube bracket 3/4" bolts to 257 ft-lbs.



20. Attach the rear hose routing plate to the tractor frame behind the pivot point and before the drawbar. There will be 2 bolts sticking down. Attach with 2 - 20mm nuts (I). Make sure the lip of the plate is facing towards the front of the tractor.

21. Torque the 20mm nuts to 432 ft-lbs.



22. Install the grill guard to the front of the undercarriage with 6 - 3/4" x 2-1/2" bolts, 12 - 3/4" flat washers, and 6 - 3/4" lock nuts (J).

23. Torque the 3/4" bolts to 257 ft-lbs.

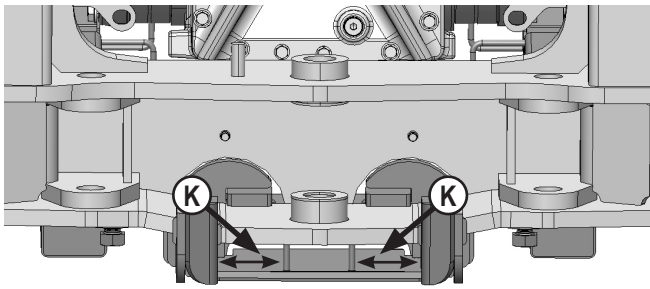
NOTE: If applicable, refer to Page 9 to attach the front of the tow cable.

24. After first 8 hours of use, re-torque all bolts.

25. Check all fasteners regularly to ensure proper operation of equipment.

Hose Routing

1. Route hoses through the hose loops on the undercarriage and through the large loop at the rear of the undercarriage.



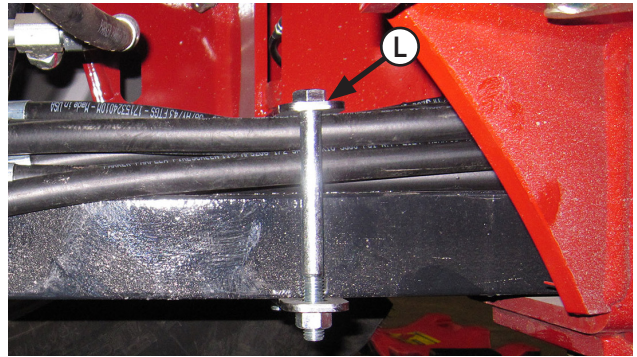
2. Send hoses through the bracket at the pivot point but stay on the outside of the rods that are by the center large nut on the tractor. The hoses should be between the rods and the inside plates of the bracket (K).

3. Route the hoses through the hose routing plate that was installed in Step #20 on Page 3.

4. Use Zip Ties to group some hoses on the left and right side of the hose routing plate. Strap the Zip Ties over the top part of the routing plate that is bolted to the tractor frame to keep the hoses towards the outside of each side of the routing plate.

5. Continue to route the hoses down the top of the drawbar to the back of the tractor where you can plug them into the tractor SCV Ports.

NOTE: Refer to diagram at the bottom of the page if clarification is needed for Step #6-11.



6. Strap the hoses to the drawbar with a set of hose holding plates in 2 locations (L). Place 1 set as close to the front of the drawbar as possible and the other behind the axle before the hoses would be routed upwards to be plugged in.

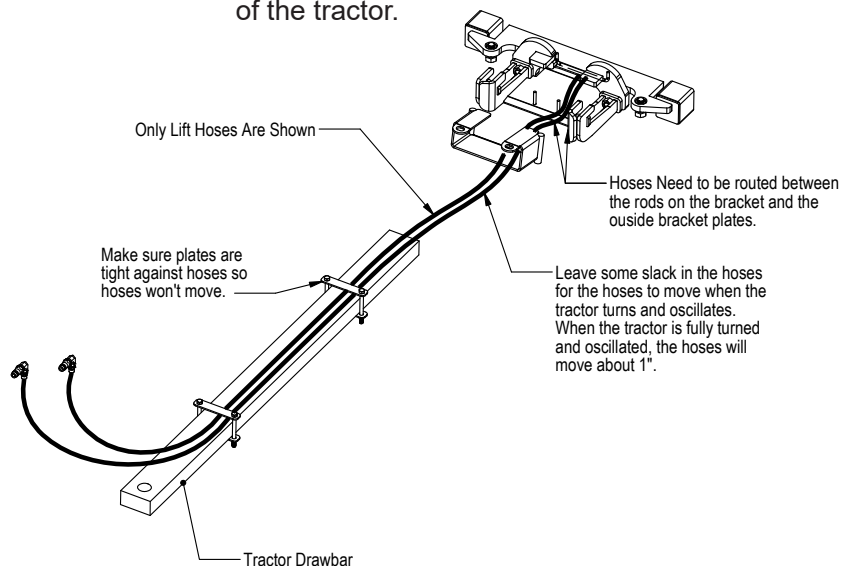
7. Make sure to keep some slack in the hose between the pivot point of the tractor and the first set of hose holding plates. The hoses will move when the tractor moves and oscillates.

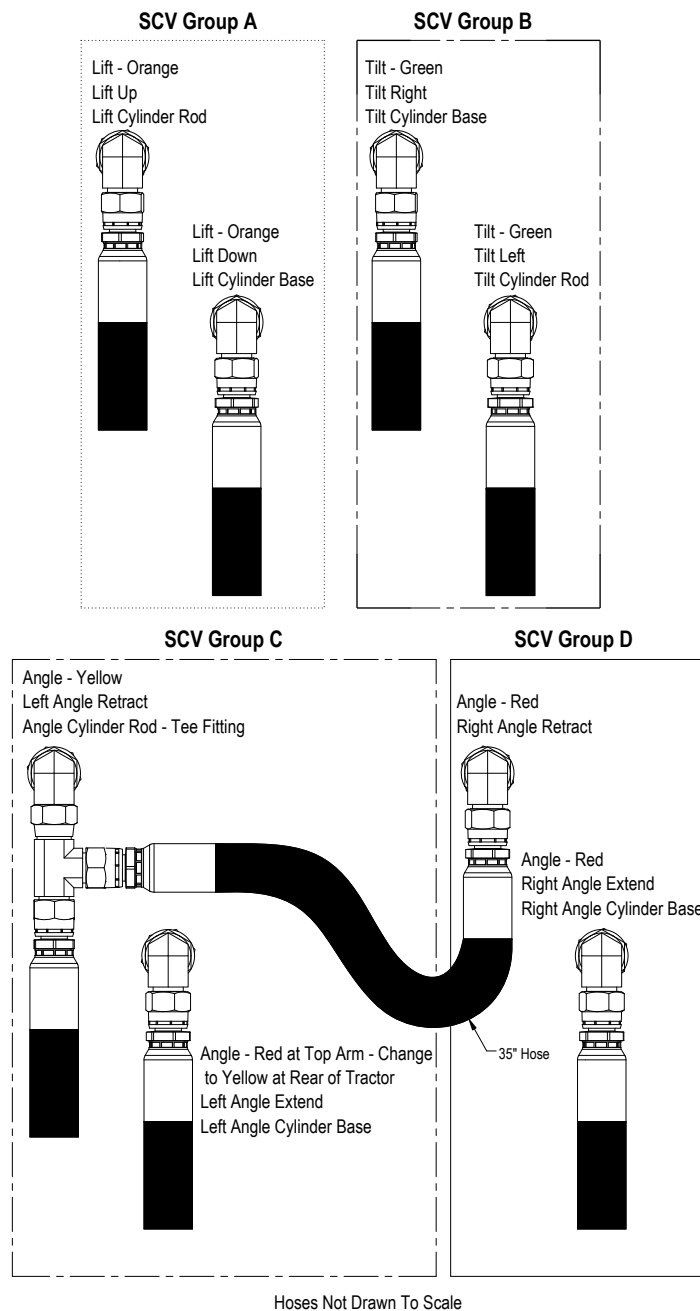
8. For each set of plates, use 2 - 1/2" x 5-1/2" bolts and 2 - 1/2" lock nuts. If you have a 12-20 or 3-5 dozer blade, use 1/2" x 6" bolts in place of the 5-1/2" bolts.

9. Tighten the 1/2" nuts so the hoses are tight and don't move. If you have the nuts as far as they go and can't get the plates tight against the hoses, use the provided 3/4" spacers and 1/2" washers between the plates and the nuts to get everything tight against the drawbar. Refer to drawing on pages 6-7 for clarification.

10. Make sure you still have some slack in the hoses by the pivot area so the hoses don't get pulled too tight when the tractor moves but don't make them too loose that they will get caught on any debris. Turn the tractor and oscillate the tractor to verify there is enough slack.

11. Plug the hoses into the open SCV's at the back of the tractor.

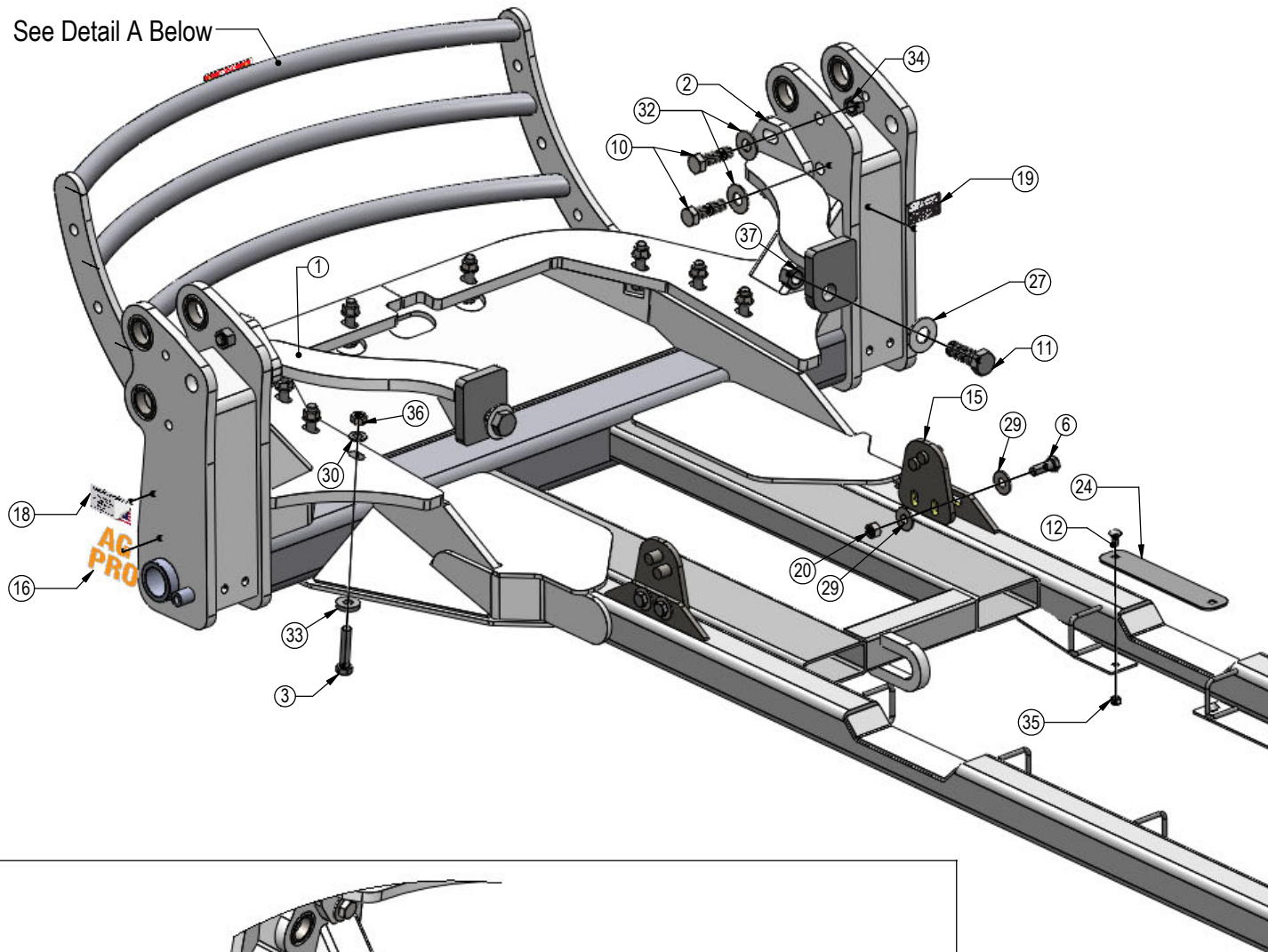




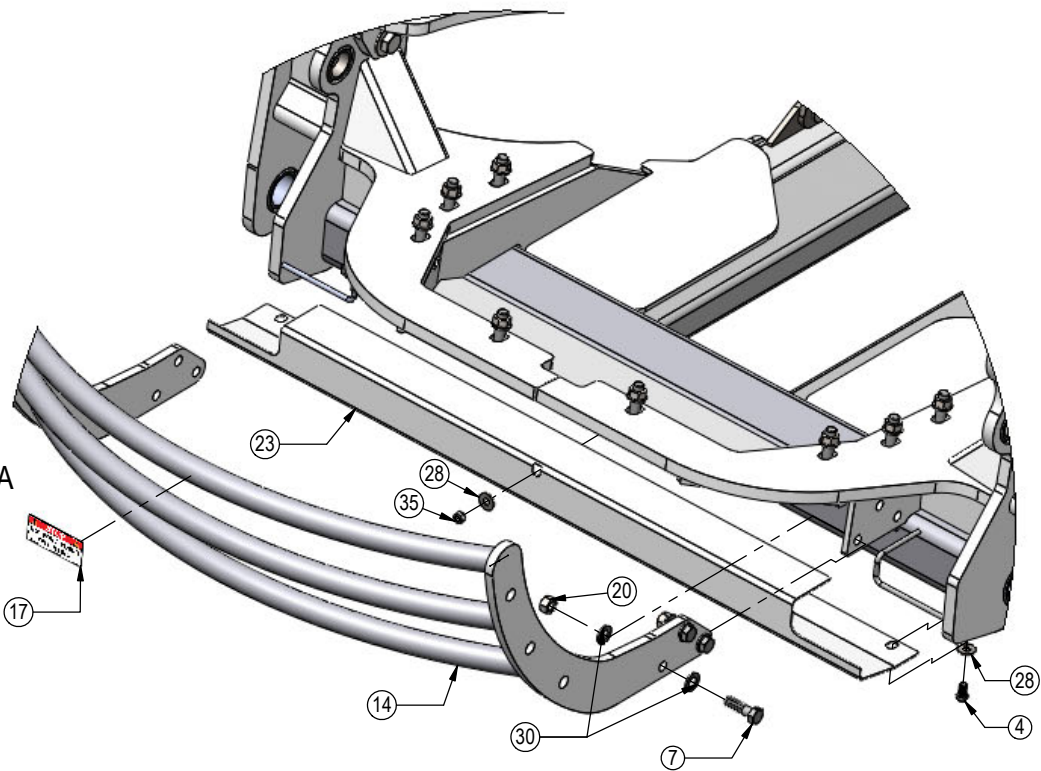
NOTE: The quantity of hoses may vary depending on blade system.

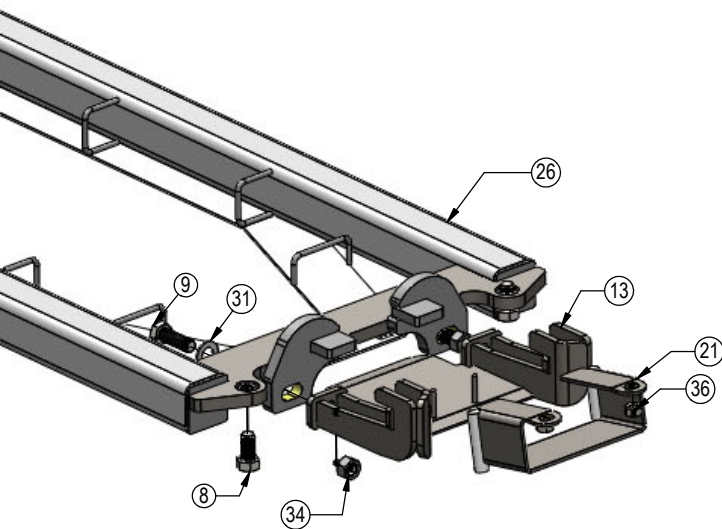
NOTE: If blade system has Dual Remote Hydraulic Angle, verify that the 35" hose is used and installed correctly. Refer to hydraulic schematic in the Owner's Manual & Parts Book if necessary.

See Detail A Below



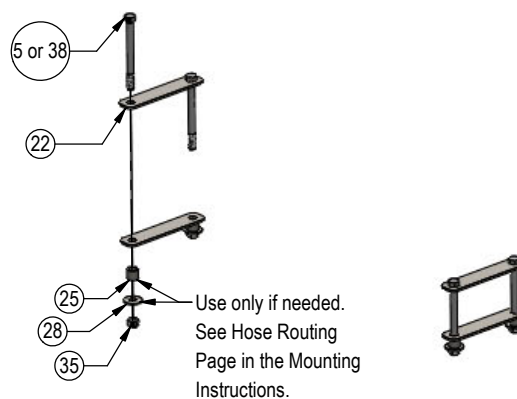
DETAIL A

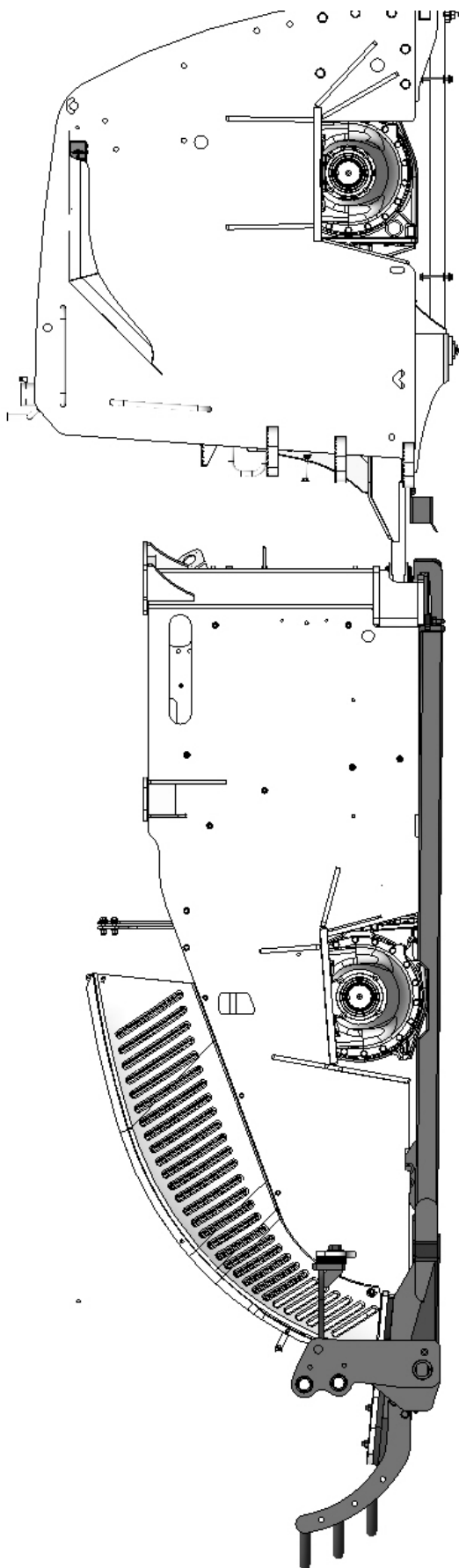




ITEM NO.	PART NO.	QTY.	DESCRIPTION
1	11-19170-L	1	Support Arm
2	11-19170-R	1	Support Arm
3	16-1510	8	20mm x 2.5mm x 90mm Hex Bolt
4	16-20124	4	1/2" x 1" Hex Bolt Gr.5 NC
5	16-20139	4	1/2" x 5-1/2" Hex Bolt Gr 5 NC
6	16-20218	4	3/4" x 2" Hex Bolt Gr.5 NC
7	16-20220	6	3/4" x 2-1/2" Hex Bolt Gr 5 NC
8	16-20558	2	1" x 2" Hex Bolt Gr. 8 NC
9	16-20562	2	1" x 3" Hex Bolt Gr.8 NC
10	16-20563	4	1" x 3-1/4" Hex Bolt Gr.8 NC
11	16-20896	2	1-1/4" x 3-1/2" Hex Bolt Gr.5 NC
12	16-21124	2	1/2" x 1" Gr.5 Carriage Bolt
13	18-17295	1	Rear Bracket
14	18-18059	1	Grill Guard Weld
15	18-18678	2	Bracket
16	27-40983	2	Ag Pro Decal
17	27-18882	1	Not For Pushing or Pulling Decal
18	27-18887	1	Grouser Name Plate Decal
19	NA	1	Grouser Dozer Metal Serial Tag
20	70-20607	10	3/4" Center Lock Hex Nut Gr 2 NC
21	18-40518	1	Hose Routing Bracket
22	44-17245	4	Plate
23	44-40504	1	Plate, Cover
24	44-40563	1	Plate, Bolt In Hose Guard
25	53-15528	4	Round Tube
26	54-40515	1	Undercarriage Weld
27	57-11671	2	1-1/4" Flat Washer
28	57-20744	9	1/2" Washer
29	57-20747	8	3/4" Flat Washer
30	57-20757	20	3/4" Flat Washer - 1-1/2" OD
31	57-20759	2	1.00" Flat Washer-2" OD
32	57-20819	4	1" Flat Washer Heavy Duty Gr 8 (USS)
33	57-3680	8	3/4" ID x 2.00 OD x .375" Heavy Washer CZ Plated
34	70-20599	4	1" Hex Nut Gr 8 NC
35	70-20604	7	1/2" Hex Center Lock Nut Gr 2 NC
36	70-20872-10	10	20mm Hex Nut 2.5 Pitch Class 10 Zinc
37	70-20981	2	1-1/4" Hex Nut Gr 5 NC
38*	16-20140	4	1/2" X 6" Hex Bolt Gr 5 NC

Item #38 - Used only with 12-20 Dozer Hydraulics in place of Item #5



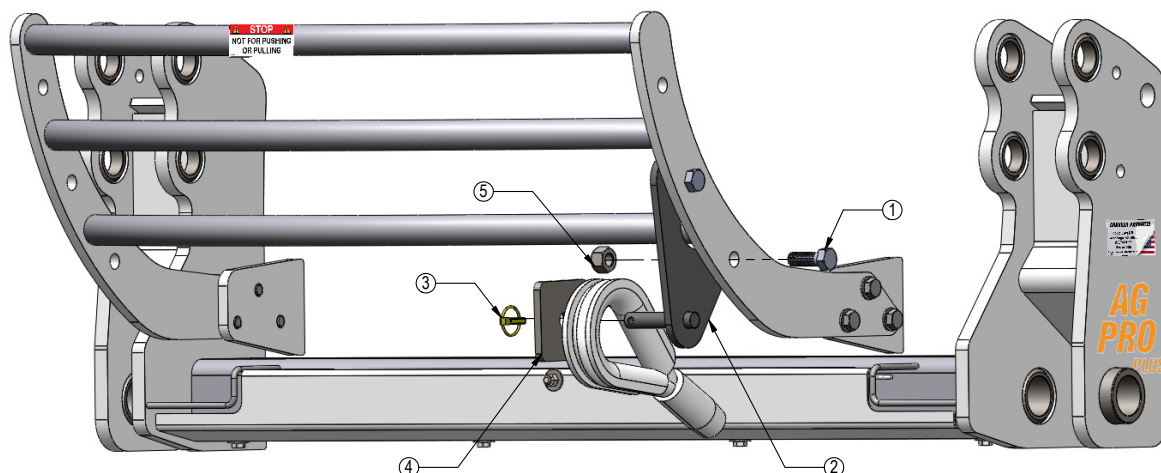


Assembling Lift Components

Refer to the Blade Owner's Manual & Parts Book for instructions on how to assemble the lift components.

Tow Cable Support Bracket Assembly

NOTE: Kit is required if tractor has a tow cable.



Ag Pro Plus - Tow Cable Support Bracket Assy - 18-19095-A

Item No.	Qty.	Part No.	Description
1	2	16-20540	7/8" x 2-1/2" Hex Bolt Gr 8 NC
2	1	18-19095	Tow Cable Support Bracket
3	1	43-16764	7/16" x 1-3/4" Lynch Pin
4	1	44-15585	Tow Cable Holding Plate
5	2	70-20598	7/8" Hex Nut Gr 8 NC

Improvements

Grouser Products Inc. is continually striving to improve its products. We reserve the right to change prices, specification, or equipment at any time without notice. We also reserve the right to make improvements or changes when it becomes practical and possible to do so without incurring any obligation to make changes or additions to the equipment sold previously.

Warranty

Grouser Products warrants to the original purchaser of each item that the product be free from defects in material and workmanship under normal use and service for a period of **two (2) years for Agriculture Series Blades and one (1) year for Heavy Duty Series from date of original retail delivery.**

The obligation of the consumer under this warranty:

1. To read the operators manual and to operate, lubricate, maintain and store equipment in accordance with the instructions listed in the operators manual.
2. To inspect equipment and if any part needs repair or replacement when continued use would cause damage or wear to other parts or safety.
3. All equipment or parts claimed to be defective in material or workmanship must be made available for inspection at the place of business of a dealer authorized to handle the equipment covered by this warranty, or, upon request by Grouser Products, shipped to the Grouser Products factory in West Fargo, North Dakota.

The obligation of the dealer under this warranty:

1. Complete warranty registration form and submit within 30 days of sale.
2. Contact Grouser Products for authorization prior to performing any warranty repairs or part replacement.
3. Complete warranty request form and submit with photos and supporting documentation.

The obligation of Grouser Products under this warranty:

1. Repair or replace, any equipment or parts, in the judgment of Grouser Products to be defective in material or workmanship.
2. Grouser Products will cover the cost of parts and ground shipping at dealer invoice only.
3. Grouser Products shall have no obligation to bear the cost of labor or transportation in connection with replacement or repair of any such defective parts.

This warranty does not cover:

1. Depreciation or damage caused by normal wear, accident, improper assembly, improper adjustments.
2. Improper maintenance including lack of proper lubrication, or improper use. Including loose bolts, nuts, or fitting due to over tightening or vibration after 20 hours of operation.
3. Repairs or alterations without authorization from a Grouser Products representative.
4. Grouser Products shall have no liability if the equipment has been altered or reworked without the written authorization of Grouser Products.

Grouser Products' parts, which are furnished under this warranty and properly installed, shall be warranted to the same extent as the original parts under this warranty if, and only if, such parts are found to be defective within the original warranty period covering the original equipment.

NO EMPLOYEE OR REPRESENTATIVE OF GROUSER PRODUCTS IS AUTHORIZED TO CHANGE THE WARRANTY IN ANY WAY OR GRANT ANY OTHER WARRANTY.

Contact Us

As always, if you have any questions about your system or other products made by Grouser, feel free to contact us.



755 2nd Ave NW - West Fargo, ND 58078
+1 701-282-7710 | info@grouser.com
www.grouser.com