



Claas Xerion

Ag Pro Undercarriage

Installation Instructions

For Models:

Claas Xerion: 4000, 4500, 5000

Purchase Date
Serial Number
Model Number
Tractor Model
Dealer

To The Owner

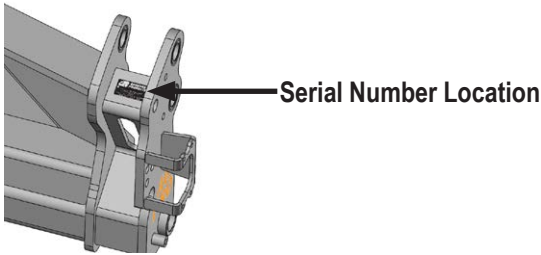
This manual contains information concerning the installation of the undercarriage. You have purchased dependable, long lasting equipment, but only by proper care and operation can you expect to receive the performance and long service built into our products. Please have all operators read this manual carefully and keep the manual available for ready reference. If you have any questions or concerns, contact Grouser Products.

Caution:

- Always use caution when working around any equipment.
- Always wear safety glasses.
- Follow tractor manufacturer's safety guidelines when installing this product.
- Use paint where necessary to prevent rust.
- Do not modify or permit anyone else to modify or alter the equipment and its components without first consulting Grouser Products.

Note:

- When installing hardware, only finger tighten until all hardware is in place.
- A full diagram of the assembly with the full list of parts is on pages 6-7.
- Unstrap and remove any components that are attached for shipping.
- Read all instructions prior to performing installation.
- Tractor frame not shown in some diagrams for clarity.



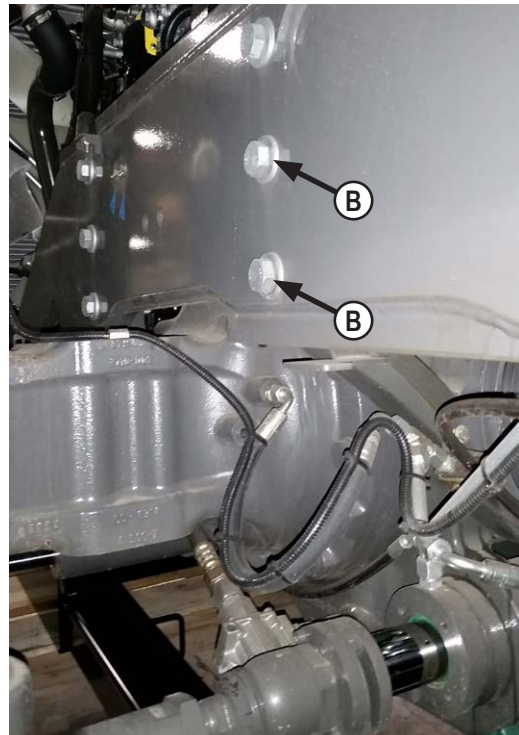
Installation

1. If applicable, remove front weights and weight bracket from front of tractor.

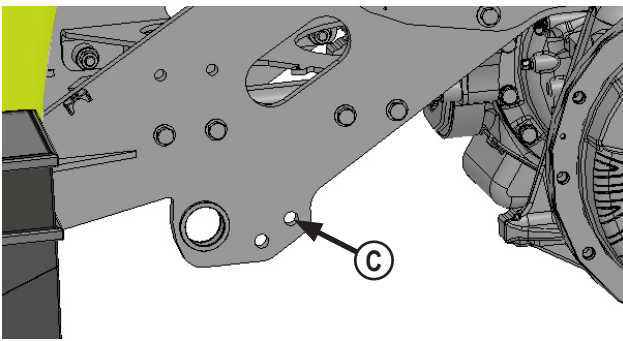


2. Disconnect the wire harness from the lights in front of the front tires. Remove the carriage bolts (A) and remove the bracket and lights from the tractor. They will be reinstalled to the undercarriage in a later step.

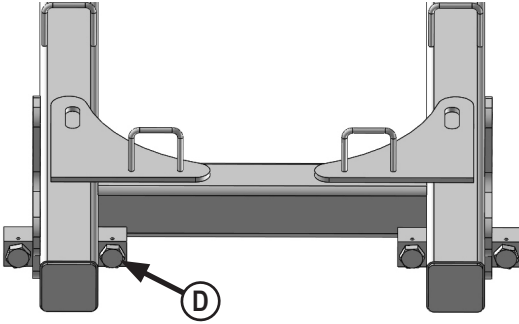
NOTE: Reattach the battery box with 3/8" x 1-1/4" bolts and 3/8" flange nuts.



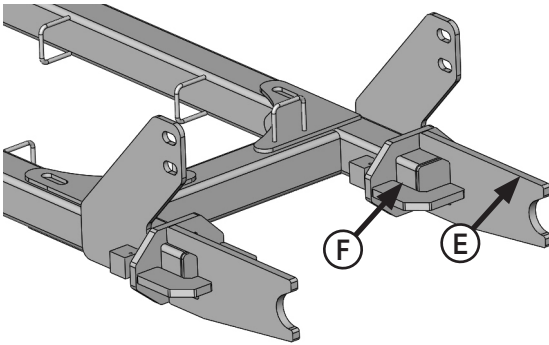
3. Behind the front axle, remove the bottom 2 bolts from each side of the tractor. You will reuse the washers in Step #11-12 (B).



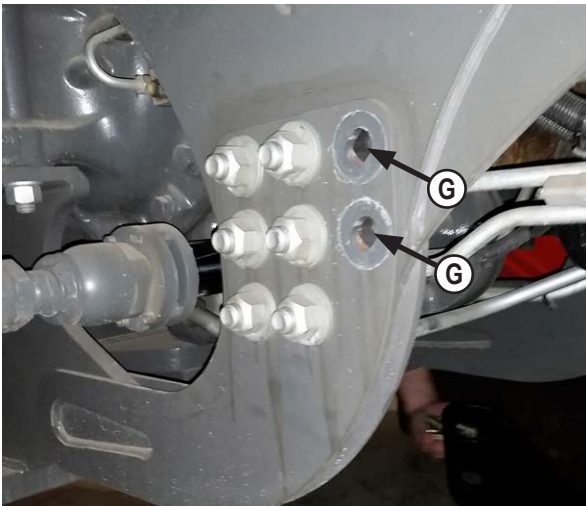
4. If applicable, remove 2 bolts in front of the front axle from each side of the tractor (C).



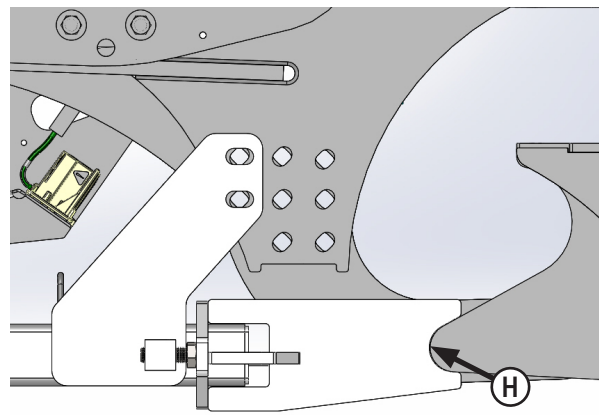
5. Install 4 - 1" x 3" bolts in the threaded boxes on the rear undercarriage (D). Turn the bolts all the way in for installation. The bolts will be adjusted in a later step.



6. Install the rear brackets on the rear undercarriage. The orientation of the bracket should be as shown in the photo. The flat edge of the plate should be on the top (E) and the larger opening for the tube on the inside (F).



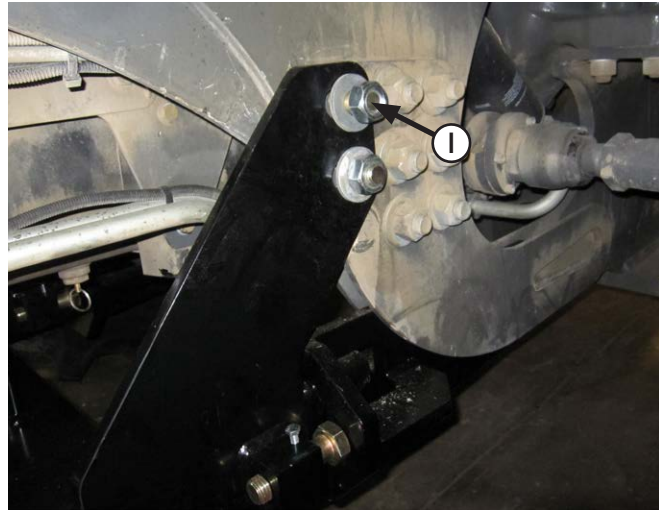
7. In front of the rear axle, remove the front 2 bolts on each side (G). The washers will be reused in Step #10.



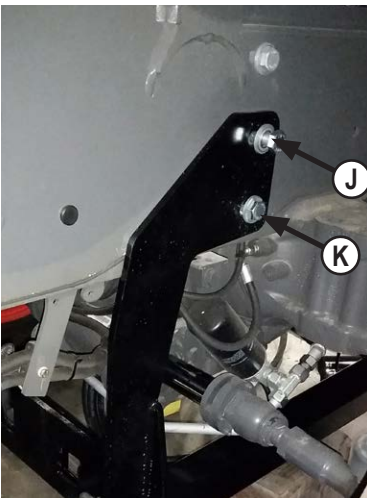
8. Position the rear undercarriage under tractor and center on the frame of the tractor.

NOTE: When lifting the undercarriage, watch for any potential pinching of hoses or any other components to prevent any damage.

9. Raise rear undercarriage and guide the rear brackets between the tractor frame plates that you removed the bolts from in Step #7. The round part of the bracket will fit around the round part of the tractor frame plate (H).



10. Attach the rear undercarriage to the tractor with 4 - 24mm x 100mm bolts, 8 - original tractor washers, and 4 - 24mm nuts (I).



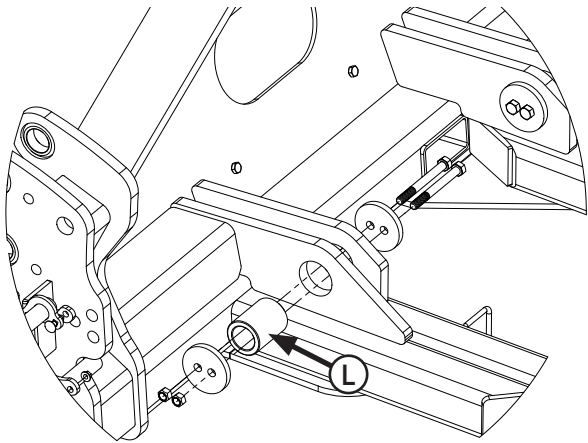
NOTE: Bracket may look slightly different than the picture but installation is still applicable.

11. Behind the front axle, attach the side brackets to the tractor with 2 - 20mm x 110mm bolt and 2 - original 20mm washers in the top holes (J).

12. Attach the side brackets to the tractor with 2 - 20mm x 110mm bolt and 4 - original 20mm washers and 2 - 20mm nuts in the bottom bolts (K).

13. Support the front end of the rear undercarriage until the front undercarriage is installed. You can temporarily attach the rear undercarriage to the side plates to hold it in place. The front undercarriage will also be attached to the side plates and the rear undercarriage in Step #17.

14. Position the undercarriage under tractor, center on the frame of the tractor.



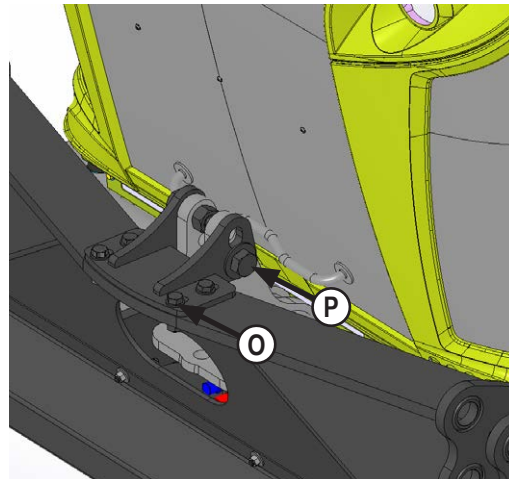
15. Raise undercarriage and insert 2 - front pins into the front side of the undercarriage and into the frame of the tractor (L). The bolts will need to be inserted from the inside. Hold the pins in place by using 4 - 5/8" x 6" bolts, 4 clamp plates and 4 - 5/8" nuts.



16. In front of the front axle, insert 4 - 7/8" x 3-1/2" bolts, 8 - 7/8" heavy washers and 4 - 7/8" nuts into each slot of the undercarriage and into the tractor frame on each side (M).

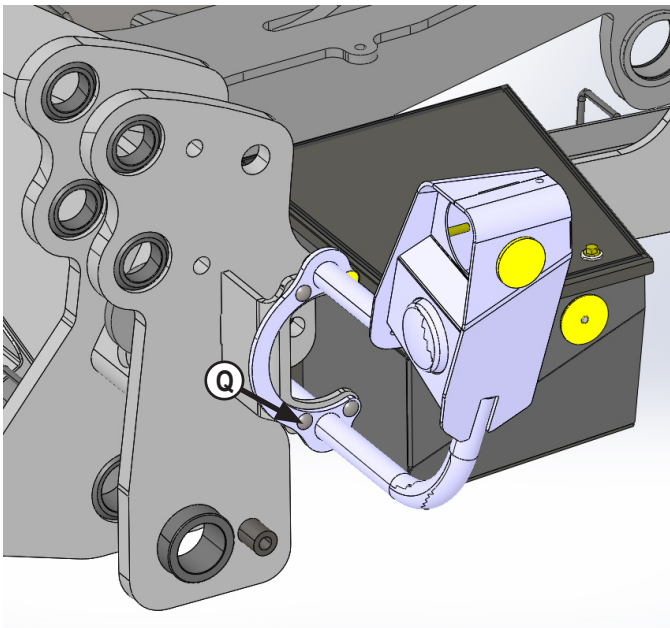


17. Attach the side brackets to the front and the rear undercarriage weldments with 6 - 1" x 3" bolts, 12 - 1" flat washers, and 6 - 1" nuts (N).



18. Attach the front top bracket to the front of the undercarriage with 4 - 3/4" x 2-1/2" bolts, 8 - 3/4" hardened flat washers and 4 - 3/4" nuts (O).

19. Attach the front top bracket to the tractor with 2 - 1-1/4" x 3-1/2" bolts, 2 - 1-1/4" flat washers and 2 - 1-1/4" nuts (P). The bolts need to be staggered. One should be installed in the top and the other in the bottom.



20. Attach the light brackets to the front of the undercarriage with 4 - 3/8" x 1-1/4" carriage bolts and 4 - 3/8" flange nuts **(Q)**. Reconnect the light wire harness. Torque the 3/8" hardware to 33 ft-lbs.
21. Torque the 5/8" bolts to 154 ft-lbs **(L)**.
22. Torque the 7/8" bolts to 600 ft-lbs **(M)**.
23. Torque the 1" bolts to 903 ft-lbs **(N)**.
24. Torque the 20mm bolts that bolt the side brackets to the side of the tractor frame to 470 ft-lbs **(J & K)**.
25. Torque the rear 24mm bolts to 909 ft-lbs **(I)**.
26. Torque the front nose bracket 1-1/4" bolts to 1,105 ft-lbs. **(P)** and the 3/4" bolts to 380 ft-lbs **(O)**.
27. Evenly unscrew the 1" bolts at the back of the undercarriage until they are tight against the rear brackets and the rear brackets are pushing against the round tractor frame plate. Torque the 1" bolts to 200 ft-lbs **(D)**.
28. Install a 5/16" x 3/4" bolt into each block at the rear of the undercarriage to hold the 1" x 3" bolt in place. Torque the 5/16" bolts to 19 ft-lbs.

Hose Routing



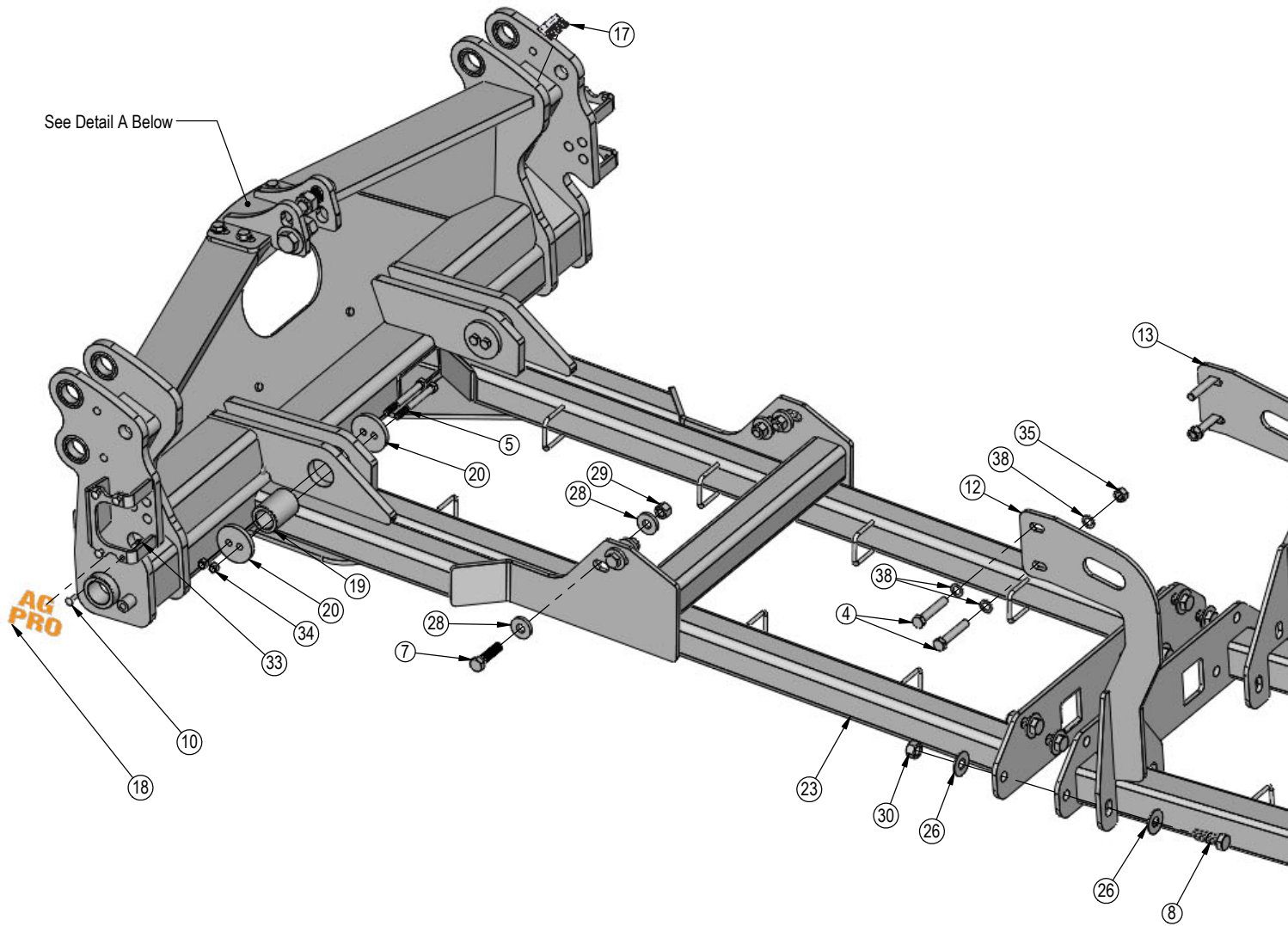
1. Route the hoses through the hose loops on the undercarriage until you reach the end of the undercarriage.
2. Continue to route the hoses to the back of the tractor. Right after the undercarriage ends, use zip ties to secure the hoses to the large steel line on each side on the tractor **(R)**.
3. Continue to route hoses to the back of the tractor. Exit the tractor frame and plug the hoses into the rear SCV's.
4. Use zip ties to attach hoses, where necessary, to avoid rubbing and pinch areas.

Assembling Lift Components

1. Refer to the Blade Owner's Manual & Parts Book for instructions on how to assemble the lift components.

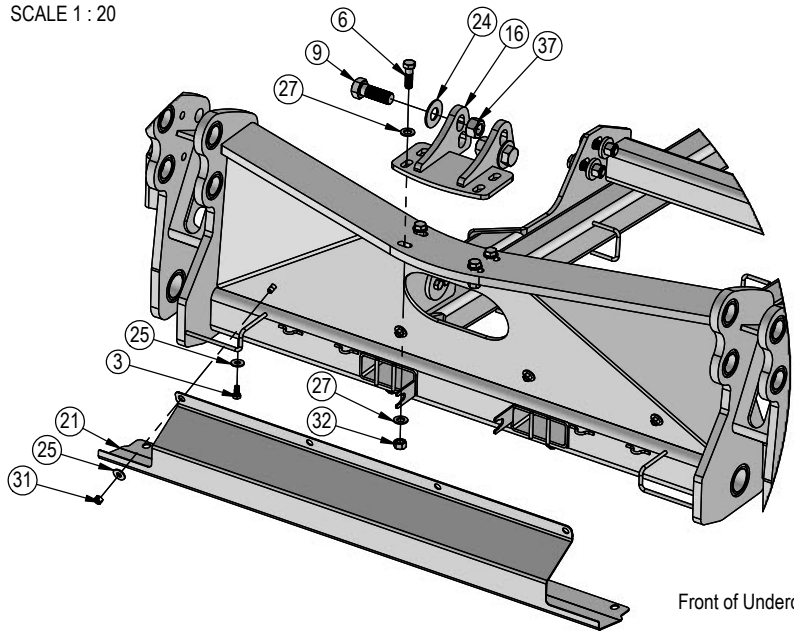
Maintenance

1. After first 8 hours of use, re-torque all bolts.
2. Check all fasteners regularly to ensure proper operation of equipment.
3. Inspect all equipment for existing or potential damages every 10 hours or less.



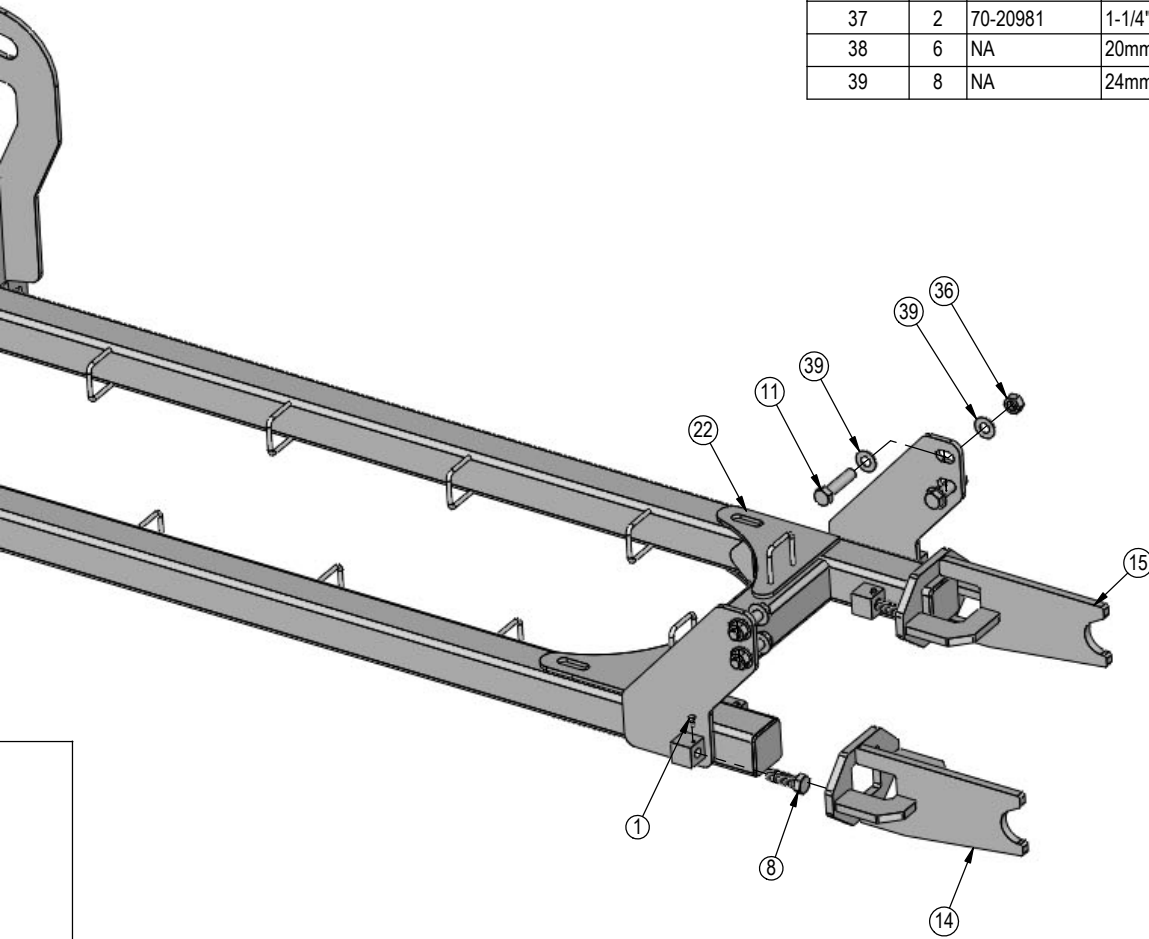
ITEM NO.	QTY.	PART NO.	DESCRIPTION
1	4	16-20032	5/16" x 3/4" Hex Bolt Gr 5 NC
2*	4	16-20065	3/8" x 1-1/4" Hex Cap Screw Gr 5 NC
3	4	16-20124	1/2" x 1" Hex Bolt Gr.5 NC
4	4	16-20150110	20mm x 1.50mm x 110mm Metric Hex Bolt Gr 10.9 Fine
5	4	16-20200	5/8" x 6" Hex Bolt Gr 5 NC
6	4	16-20220	3/4" x 2-1/2" Hex Bolt Gr 5 NC
7	4	16-20544	7/8" x 3-1/2" Hex Bolt Gr 8 NC
8	10	16-20562	1" x 3" Hex Bolt Gr.8 NC
9	2	16-20896	1-1/4" x 3-1/2" Hex Bolt Gr.5 NC
10	8	16-21065	3/8" x 1-1/4" Carriage Bolt Gr 5 NC
11	4	16-2486	24mm x 3.0mm x 100mm Hex Bolt
12	1	18-17995-L	Xerion Side Bracket
13	1	18-17995-R	Xerion Side Bracket
14	1	18-17996-L	Xerion Rear Bracket
15	1	18-17996-R	Xerion Rear Bracket
16	1	18-18549	Top Bracket
17	1	NA	Grouser Dozer Metal Serial Tag
18	2	27-40983	Ag Pro Decal
19	2	43-18531	Pin
20	4	44-18003	Plate, Clamp

DETAIL A
SCALE 1 : 20



ITEM NO.	QTY.	PART NO.	DESCRIPTION
21	1	44-40506	Plate, Cover
22	1	54-17990	Xerion UC Weld, Rear
23	1	54-40545	Xerion 783 UC Weld, Front
24	2	57-11671	1-1/4" Flat Washer
25	8	57-20744	1/2" Washer
26	12	57-20749	1" Flat Washer
27	8	57-20757	3/4" Flat Washer - 1-1/2" OD
28	8	57-3681	7/8" ID x 2-1/4" OD x .375" Heavy Washer
29	4	70-20598	7/8" Hex Nut Gr 8 NC
30	6	70-20599	1" Hex Nut Gr 8 NC
31	4	70-20604	1/2" Hex Center Lock Nut Gr 2 NC
32	4	70-20607	3/4" Center Lock Hex Nut Gr 2 NC
33	10	70-20622	3/8" Flange Hex Nut Gr 5 NC
34	4	70-20646	5/8" Hex Top Lock Nut Gr 5 NC
35	2	70-20850-10	20mm Hex Nut 1.5 Pitch Cl 10
36	4	70-20874	24mm Hex Nut 3.0 Pitch CL 8
37	2	70-20981	1-1/4" Hex Nut Gr 5 NC
38	6	NA	20mm Flat Washer - Use original tractor washer
39	8	NA	24mm Flat Washer - Use original tractor washer

* Parts Not Shown



Improvements

Grouser Products Inc. is continually striving to improve its products. We reserve the right to change prices, specification, or equipment at any time without notice. We also reserve the right to make improvements or changes when it becomes practical and possible to do so without incurring any obligation to make changes or additions to the equipment sold previously.

Warranty

Grouser Products warrants to the original purchaser of each item that the product be free from defects in material and workmanship under normal use and service for a period of **two (2) years for Agriculture Series Blades and one (1) year for Heavy Duty Series from date of original retail delivery.**

The obligation of the consumer under this warranty:

1. To read the operators manual and to operate, lubricate, maintain and store equipment in accordance with the instructions listed in the operators manual.
2. To inspect equipment and if any part needs repair or replacement when continued use would cause damage or wear to other parts or safety.
3. All equipment or parts claimed to be defective in material or workmanship must be made available for inspection at the place of business of a dealer authorized to handle the equipment covered by this warranty, or, upon request by Grouser Products, shipped to the Grouser Products factory in West Fargo, North Dakota.

The obligation of the dealer under this warranty:

1. Complete warranty registration form and submit within 30 days of sale.
2. Contact Grouser Products for authorization prior to performing any warranty repairs or part replacement.
3. Complete warranty request form and submit with photos and supporting documentation.

The obligation of Grouser Products under this warranty:

1. Repair or replace, any equipment or parts, in the judgment of Grouser Products to be defective in material or workmanship.
2. Grouser Products will cover the cost of parts and ground shipping at dealer invoice only.
3. Grouser Products shall have no obligation to bear the cost of labor or transportation in connection with replacement or repair of any such defective parts.

This warranty does not cover:

1. Depreciation or damage caused by normal wear, accident, improper assembly, improper adjustments.
2. Improper maintenance including lack of proper lubrication, or improper use. Including loose bolts, nuts, or fitting due to over tightening or vibration after 20 hours of operation.
3. Repairs or alterations without authorization from a Grouser Products representative.
4. Grouser Products shall have no liability if the equipment has been altered or reworked without the written authorization of Grouser Products.

Grouser Products' parts, which are furnished under this warranty and properly installed, shall be warranted to the same extent as the original parts under this warranty if, and only if, such parts are found to be defective within the original warranty period covering the original equipment.

NO EMPLOYEE OR REPRESENTATIVE OF GROUSER PRODUCTS IS AUTHORIZED TO CHANGE THE WARRANTY IN ANY WAY OR GRANT ANY OTHER WARRANTY.

Contact Us

As always, if you have any questions about your system or other products made by Grouser, feel free to contact us.



755 2nd Ave NW - West Fargo, ND 58078
+1 701-282-7710 | info@grouser.com
www.grouser.com