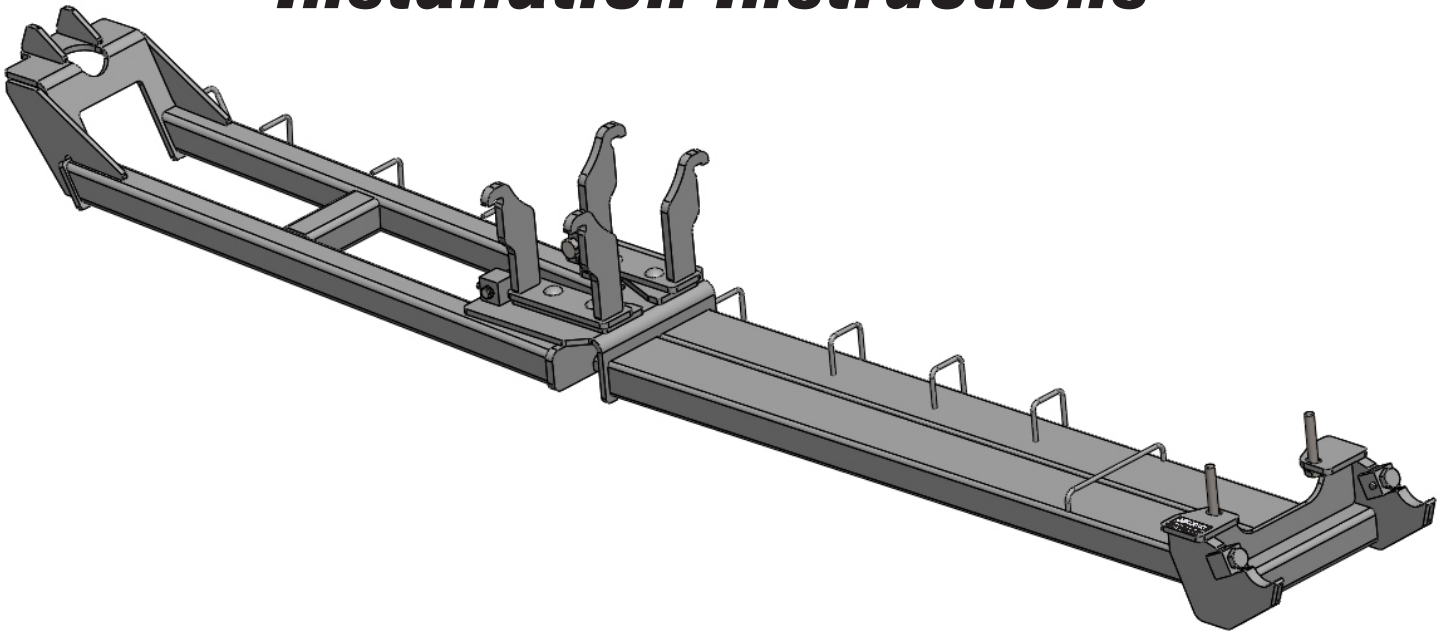




Case Optum & New Holland T7 HD Three Point Linkage Reinforcement Installation Instructions



For Models:

Case Optum: 270, 300

New Holland: T7.290, T7.315

Purchase Date
Serial Number
Model Number
Tractor Model
Dealer

To The Owner

This manual contains information concerning the installation of the front support. You have purchased dependable, long lasting equipment, but only by proper care and operation can you expect to receive the performance and long service built into our products. Please read this manual carefully and keep the manual available for ready reference. If you have any questions or concerns, contact Grouser Products.

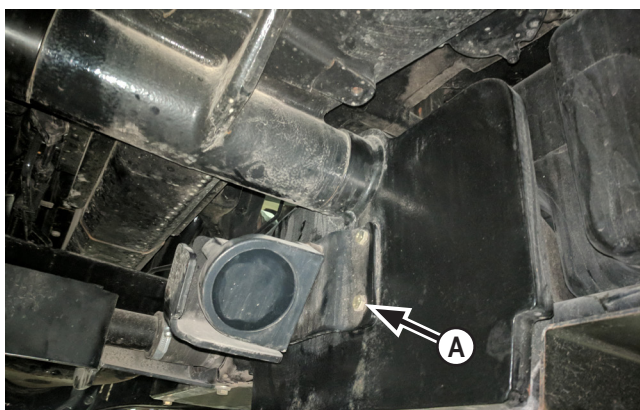
Caution:

- Always use caution when working around any equipment.
- Always wear safety glasses.
- Follow tractor manufacturer's safety guidelines when installing this product.
- Use paint where necessary to prevent rust.
- Do not modify or permit anyone else to modify or alter the equipment and its components without first consulting Grouser Products.

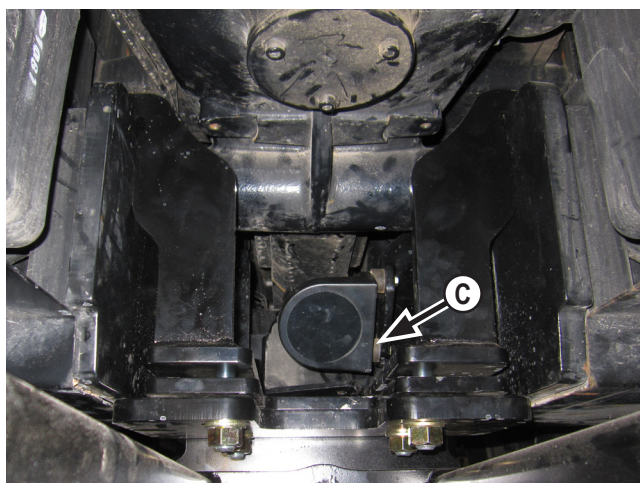
Note:

- Read all instructions prior to performing installation.
- When installing hardware, only finger tighten until all hardware is in place.
- A full diagram of the assembly with the full list of parts is on pages 4-5.
- Unstrap and remove any components that are attached for shipping.

Pre-Installation



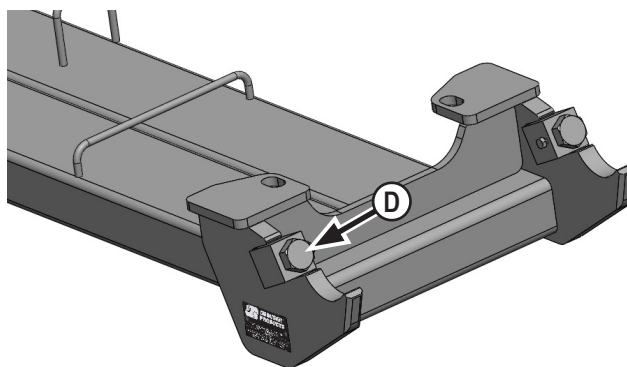
1. Disconnect the speed sensor wire harness.
2. Remove the speed sensor and the bracket from the fuel tank frame (A). The speed sensor will be reinstalled in Step #4. Keep the original bracket in case the front support is ever removed.



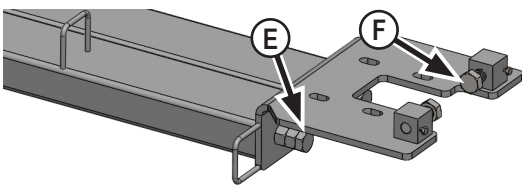
4. Install the speed sensor (C) along with the original spacers on the right bracket with 3 - 1/4" x 1-1/2" bolts and 3 - 1/4" washers.



3. Install the left and right brackets on the fuel tank frame (B). Only the left side is shown in the picture
- NOTE: Refer to diagram on pages 4-5 for correct orientation of brackets. The speed sensor will be reinstalled on the right bracket.**

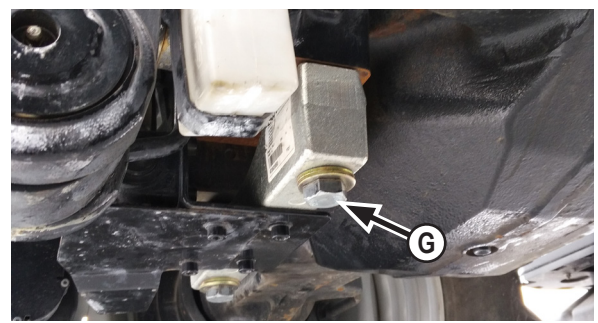


5. Install 2 - 1" x 2-1/2" bolts in the threaded blocks at the front of the support (D). Turn the bolts all the way in for installation. The bolts will be adjusted in Step #14.



6. Install 2 - 1" x 6" bolts and 2 - 1" nuts at the rear of the support (E). Turn the bolts all the way in for installation. The bolts will be adjusted in Step #19.

7. Install 2 - 1" x 3" bolts from the inside into the threaded boxes at the rear of the support (F). Turn the bolts in until the bolt end is flush with the face of the block. The bolts will be adjusted in Step #17.



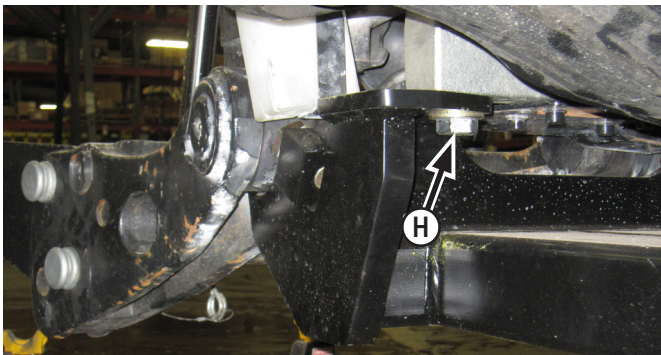
8. Remove the bolts from behind the front 3-point and in front of the front axle (G).

NOTE: The block will remain in place and will be attached with new hardware in Step #10.

Front Support Installation

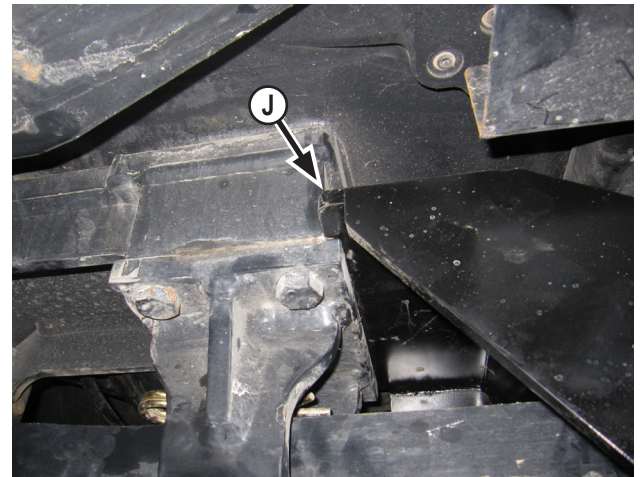
9. Position and center the front support under the tractor. Lift the undercarriage until it is within 3/4" of touching the tractor frame.

NOTE: When lifting the undercarriage, watch for any potential pinching of hoses or any other components to prevent any damage.



10. Install 2 - 20mm x 120mm bolts and 2 - 7/8" washers in the vertical slots at the front of the front support (H). The front hooks will rest up against the factory 3-point frame.

12. Position and center the push pole behind the front support under the rear of the tractor. Lift and slide the front end of the push pole onto the round pin at the rear of the front support.



13. Lift the rear of the push pole and set on top of the drawbar bracket (J).

NOTE: The drawbar may need to be pulled out to allow room for the push pole to be lifted into place.

14. Evenly unscrew the 1" bolts at the front of the front support until they are tight against the 3-point frame (D). Torque the 1" bolts to 90-95 ft-lbs.

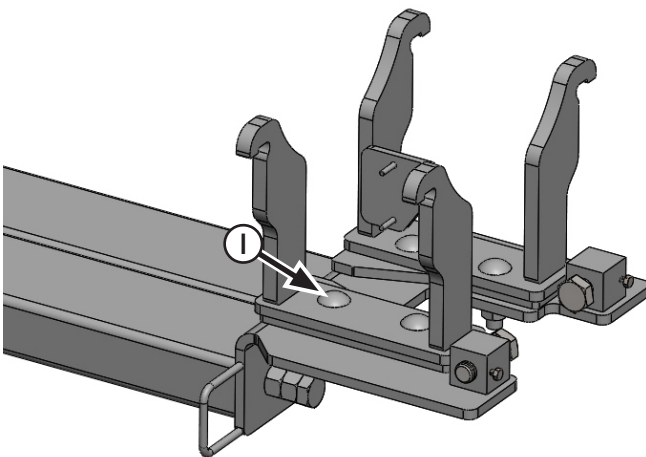
15. Torque the front 20mm bolts (H) to 432 ft-lbs.

16. Torque the 3/4" carriage (I) for 257 ft-lbs.

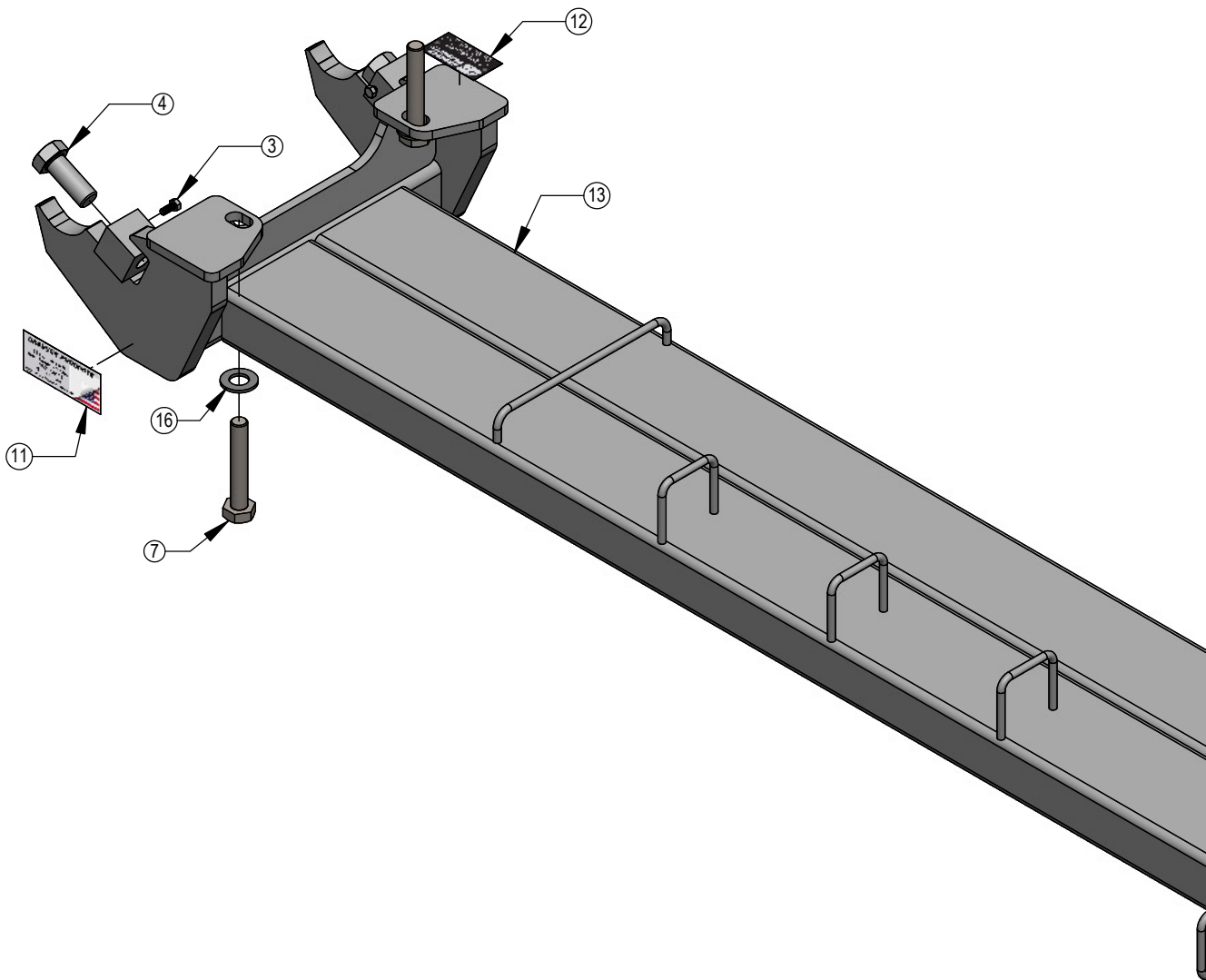
17. Evenly screw in the 1" bolts in the threaded boxes at the rear of the front support until they are tight against fuel tank frame (F). Torque the 1" bolts to 8-10 ft-lbs.

18. Install 4 - 5/16" x 3/4" bolts into the blocks at the front and rear of the front support to lock the 1" bolts (D & F). Torque the 5/16" bolts to 19 ft-lbs.

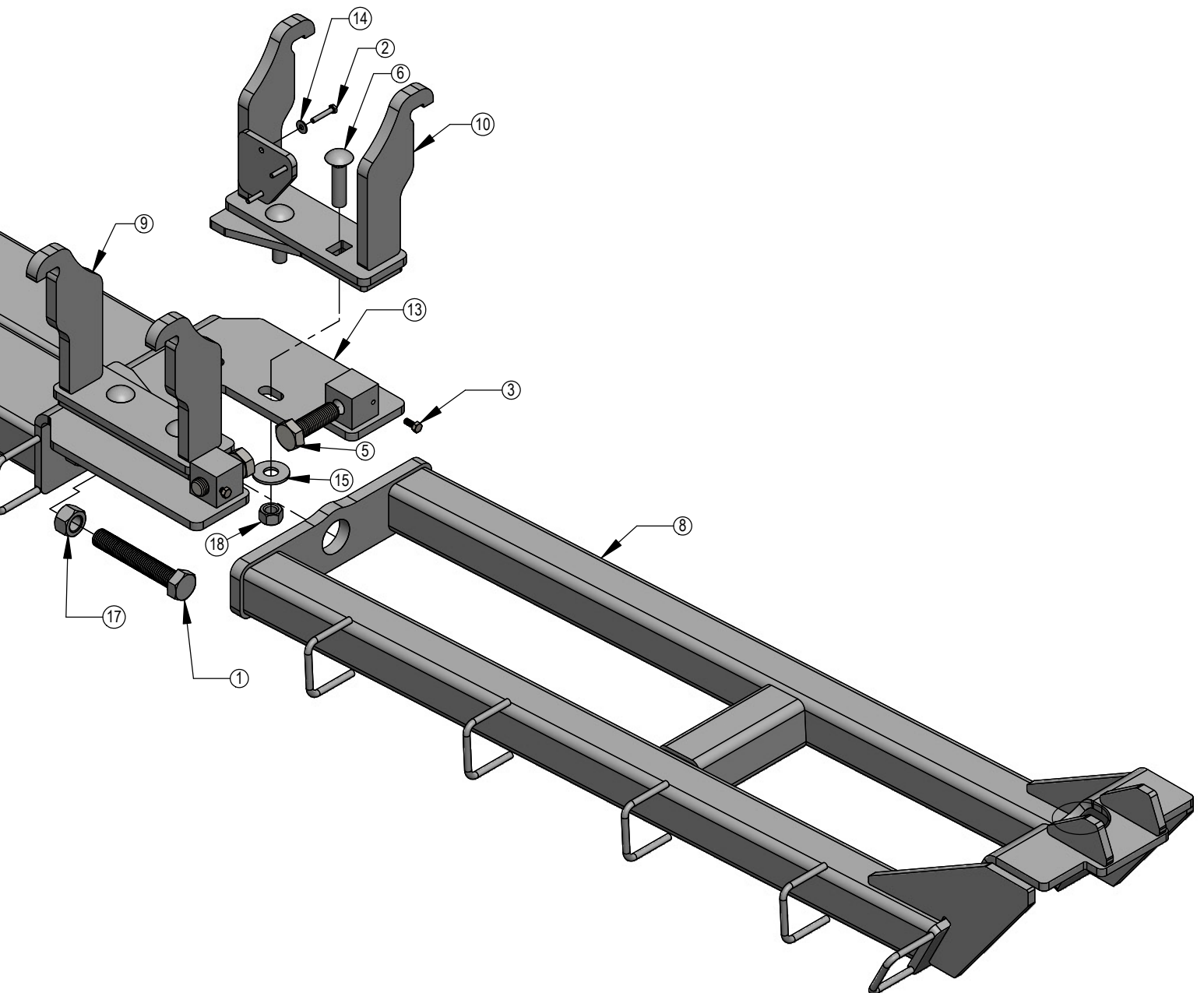
19. Evenly unscrew the 1" bolts at the rear of the front support until they are tight against the push pole (E). Torque the 1" bolts to 90-95 ft-lbs.



11. Lift the rear of the undercarriage and attach to the left and right brackets with 4 - 3/4" x 3" carriage bolts, 4 - 3/4" flat washers, and 4 - 3/4" nuts (I).



ITEM NO.	QTY.	PART NO.	DESCRIPTION
1	2	16-17271	1" X 6" Hex Bolt Gr 8 NC (Full Thread)
2	3	16-20006	1/4" X 1-1/2" Hex Bolt Gr 5 NC
3	4	16-20032	5/16" x 3/4" Hex Bolt Gr 5 NC
4	2	16-20560	1" x 2-1/2" Gr.8 NC Hex Bolt
5	2	16-20562	1" x 3" Hex Bolt Gr.8 NC
6	4	16-21222	3/4" x 3.00" Carriage Bolt Gr.5
7	2	16-2489	20mm x 2.5mm x 120mm Hex Bolt Gr 10.9
8	1	17-40720R1	Case Optum Push Pole
9	1	18-40730R2	Bracket, Left
10	1	18-40731R2	Bracket, Right
11	1	27-18887	Grouser Name Plate Decal
12	1	NA	Grouser Dozer Metal Serial Tag
13	1	54-40790R2	Front Support Weld, Optum
14	3	57-20740	1/4" Flat Washer
15	4	57-20747	3/4" Flat Washer
16	2	57-20758	7/8" SAE Hardened Flat Washer - 1-3/4" OD
17	2	70-20599	1" Hex Nut Gr 8 NC
18	4	70-20607	3/4" Center Lock Hex Nut NC



DWG. NO.: 40790-A

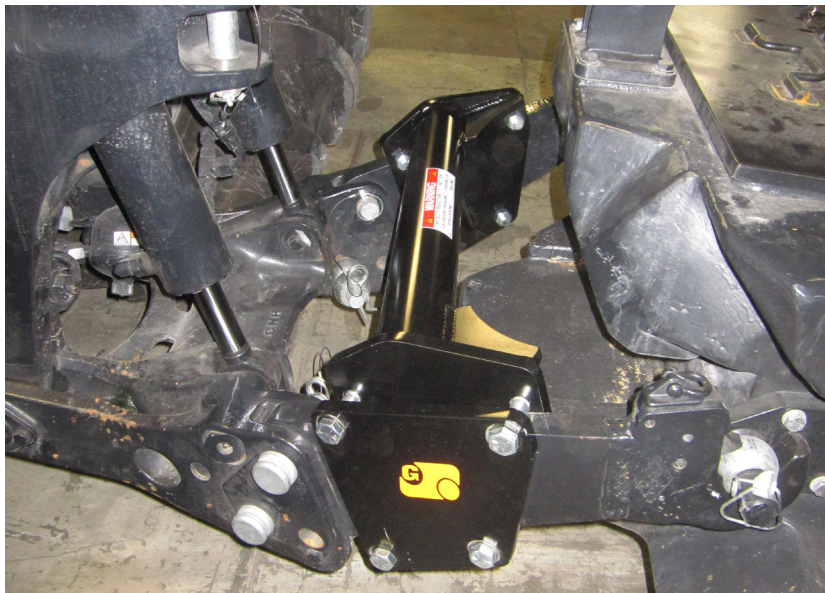


Torque Arm - Front Hitch

Installation Instructions

Caution:

- Always use precaution when working around any equipment.
- Always wear safety glasses.
- Follow tractor manufacturer's safety guidelines when installing this product.
- Read all instructions prior to installation.
 1. Set the front hitch arms to the fixed position. The front hitch arms cannot be in float with the torque arm installed.
 2. Position the torque arm between the front hitch arms. The longest and straight edge of the plate should be closest to the tractor. See the photo below for correct orientation.
 3. Support the torque arm and install a bolting plate with 4 - 3/4" x 4" bolts and 4 - 3/4" nuts on each side.
 4. Once the bolts are all installed, push the torque arm evenly towards the tractor. Keep the torque arm parallel to the front of the tractor.
 5. Torque the 3/4" bolts to 100 ft-lbs.
 6. Operate the front hitch arms up and down and check for any interference.
 7. After first 8 hours of use, re-torque all bolts.
 8. Check all fasteners regularly to ensure proper operation of equipment.

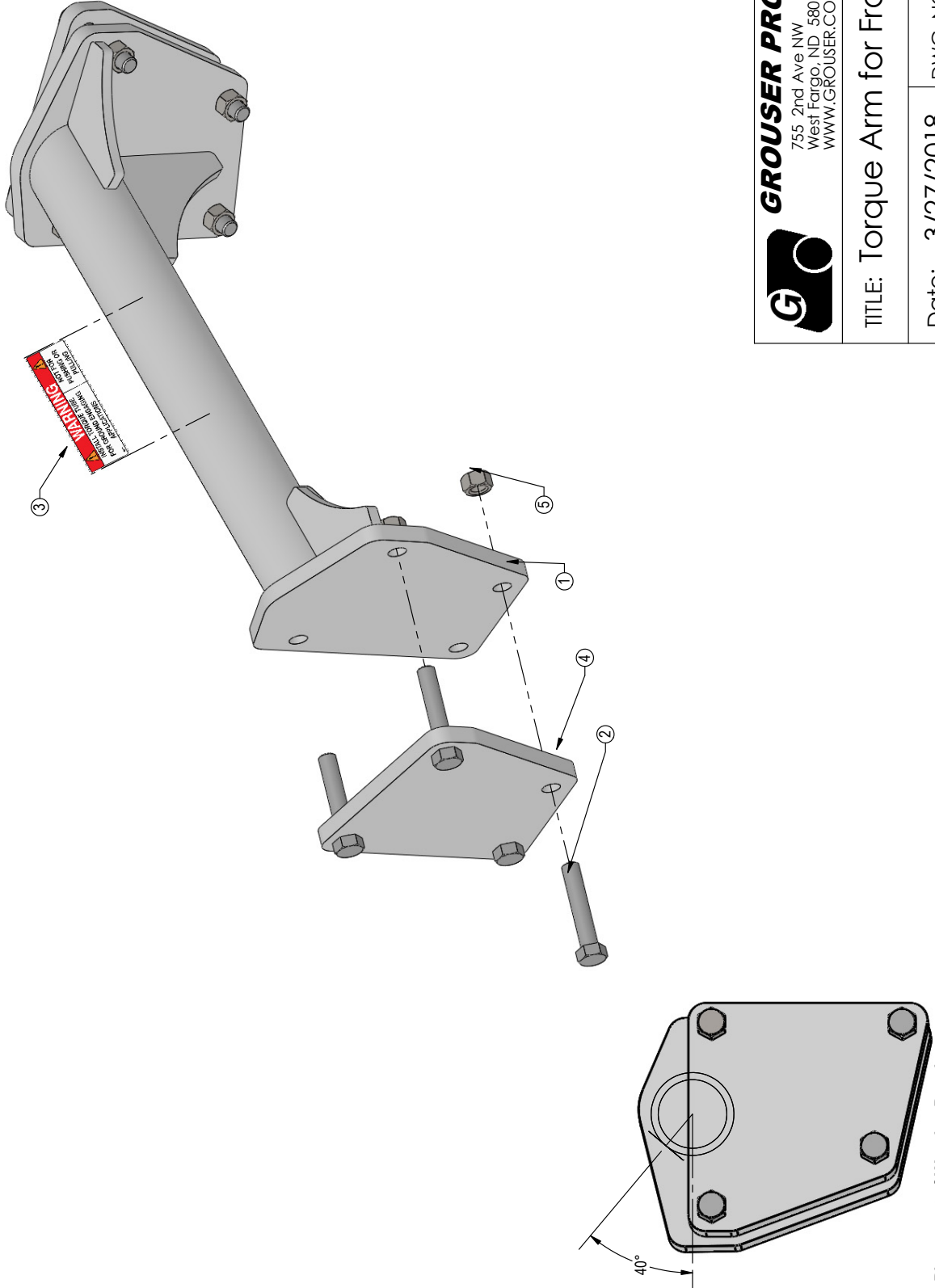


Note: The style of front hitch arms may vary slightly.
Photo shows weight package installed.



THE INFORMATION CONTAINED IN THIS DRAWING IS THE SOLE PROPERTY OF GROUSER PRODUCTS, INC. ANY REPRODUCTION IN PART OR WHOLE, WITHOUT THE WRITTEN PERMISSION OF GROUSER PRODUCTS, INC. IS PROHIBITED.

ITEM NO.	PART NO.	QTY.	DESCRIPTION
1	11-40795	1	Optum Torque Arm
2	16-20226	8	3/4" X 4" Hex Bolt Gr. 5 NC
3	27-40405	1	Warning Decal - Torque Arm
4	44-40796	2	Optum Torque Arm - Plate
5	70-20607	8	3/4" Center Lock Hex Nut NC



Placement of Warning Decal

GROUSER PRODUCTS INC.
 755 2nd Ave NW Phone 701.282.7710
 West Fargo, ND 58078 Fax 701.282.8131
 WWW.GROUSER.COM

TITLE: Torque Arm for Front Hitches

Date: 3/27/2018 DWG. NO.: 40795-A

Improvements

Grouser Products Inc. is continually striving to improve its products. We reserve the right to change prices, specification, or equipment at any time without notice. We also reserve the right to make improvements or changes when it becomes practical and possible to do so without incurring any obligation to make changes or additions to the equipment sold previously.

Warranty

Grouser Products warrants to the original purchaser of each item that the product be free from defects in material and workmanship under normal use and service for a period of **two (2) years for Agriculture Series Blades and one (1) year for Heavy Duty Series from date of original retail delivery.**

The obligation of the consumer under this warranty:

1. To read the operators manual and to operate, lubricate, maintain and store equipment in accordance with the instructions listed in the operators manual.
2. To inspect equipment and if any part needs repair or replacement when continued use would cause damage or wear to other parts or safety.
3. All equipment or parts claimed to be defective in material or workmanship must be made available for inspection at the place of business of a dealer authorized to handle the equipment covered by this warranty, or, upon request by Grouser Products, shipped to the Grouser Products factory in West Fargo, North Dakota.

The obligation of the dealer under this warranty:

1. Complete warranty registration form and submit within 30 days of sale.
2. Contact Grouser Products for authorization prior to performing any warranty repairs or part replacement.
3. Complete warranty request form and submit with photos and supporting documentation.

The obligation of Grouser Products under this warranty:

1. Repair or replace, any equipment or parts, in the judgment of Grouser Products to be defective in material or workmanship.
2. Grouser Products will cover the cost of parts and ground shipping at dealer invoice only.
3. Grouser Products shall have no obligation to bear the cost of labor or transportation in connection with replacement or repair of any such defective parts.

This warranty does not cover:

1. Depreciation or damage caused by normal wear, accident, improper assembly, improper adjustments.
2. Improper maintenance including lack of proper lubrication, or improper use. Including loose bolts, nuts, or fitting due to over tightening or vibration after 20 hours of operation.
3. Repairs or alterations without authorization from a Grouser Products representative.
4. Grouser Products shall have no liability if the equipment has been altered or reworked without the written authorization of Grouser Products.

Grouser Products' parts, which are furnished under this warranty and properly installed, shall be warranted to the same extent as the original parts under this warranty if, and only if, such parts are found to be defective within the original warranty period covering the original equipment.

NO EMPLOYEE OR REPRESENTATIVE OF GROUSER PRODUCTS IS AUTHORIZED TO CHANGE THE WARRANTY IN ANY WAY OR GRANT ANY OTHER WARRANTY.

Contact Us

As always, if you have any questions about your system or other products made by Grouser, feel free to contact us.



755 2nd Ave NW - West Fargo, ND 58078
+1 701-282-7710 | info@grouser.com
www.grouser.com