



Mobile Track Solutions

Ag Pro Undercarriage

Installation Instructions

For Models:
Mobile Track Solutions: 3630T

Purchase Date
Serial Number
Model Number
Tractor Model
Dealer

To The Owner

This manual contains information concerning the installation of the undercarriage. You have purchased dependable, long lasting equipment, but only by proper care and operation can you expect to receive the performance and long service built into our products. Please have all operators read this manual carefully and keep the manual available for ready reference. If you have any questions or concerns, contact Grouser Products.

Caution:

- Always use caution when working around any equipment.
- Always wear safety glasses.
- Follow tractor manufacturer's safety guidelines when installing this product.
- Use paint where necessary to prevent rust.
- Do not modify or permit anyone else to modify or alter the equipment and its components without first consulting Grouser Products.

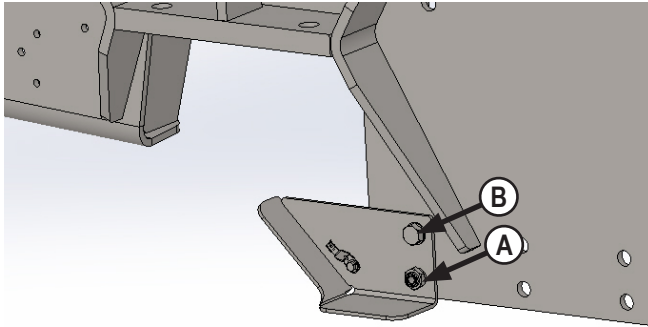


Note:

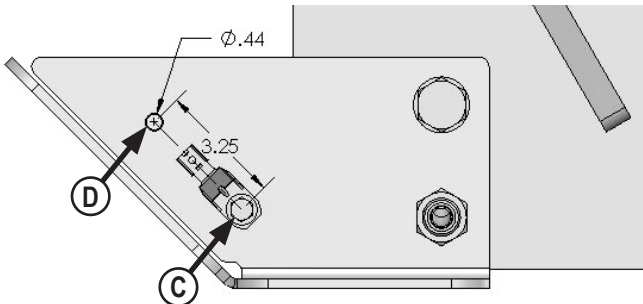
- Read all instructions prior to performing installation.
- When installing hardware, only finger tighten until all hardware is in place.
- A full diagram of the assembly with the full list of parts is on pages 6-7.
- Unstrap and remove any components that are attached for shipping.
- The tracks may need to be rotated up or down to gain better access at some bolting locations

Installation

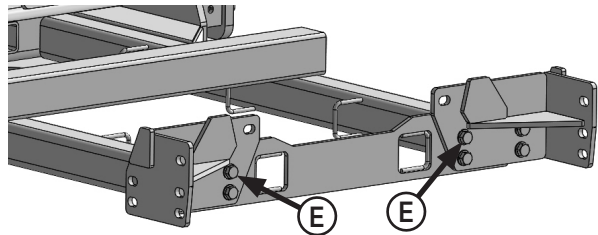
1. If applicable, remove front weights, toolboxes, and left side step, tow cable bracket on right side of tractor, and tow cable. Tow cable can be reinstalled later with the undercarriage.



2. Remove hardware from top hole (B). Support bracket and move wire harness (A) to the top hole (B).

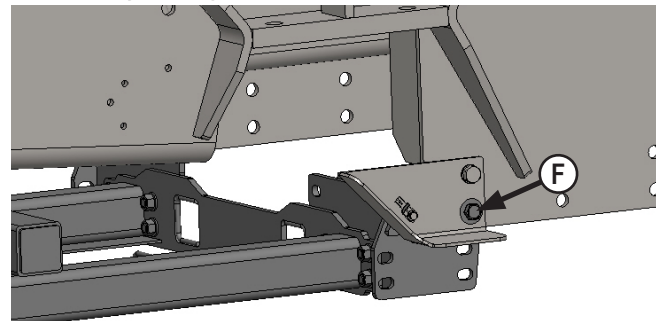


3. Drill 7/16" hole in track tension guard (D) at location shown above to relocate wire harness. Relocate wire harness (C) to the new hole (D).
4. Repeat Steps #2-3 for the right side.
5. Remove the front cover on the undercarriage.



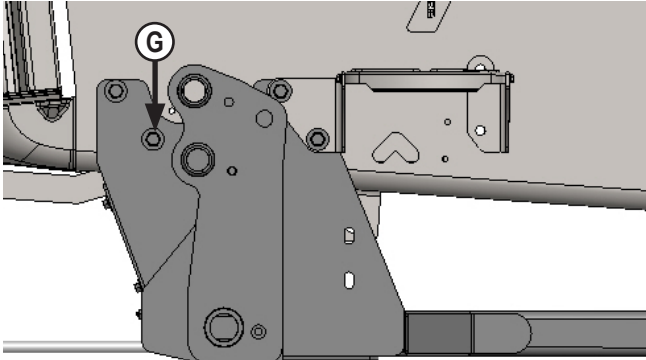
6. Attach the rear brackets to the rear of the undercarriage with 8 - 3/4" x 2" bolts, 16 - 3/4" flat washers, and 8 - 3/4" nuts (E).
7. Position undercarriage under tractor and center on the frame of the tractor.

NOTE: When lifting the undercarriage, watch for any potential pinching of hoses or any other components to prevent any damage.



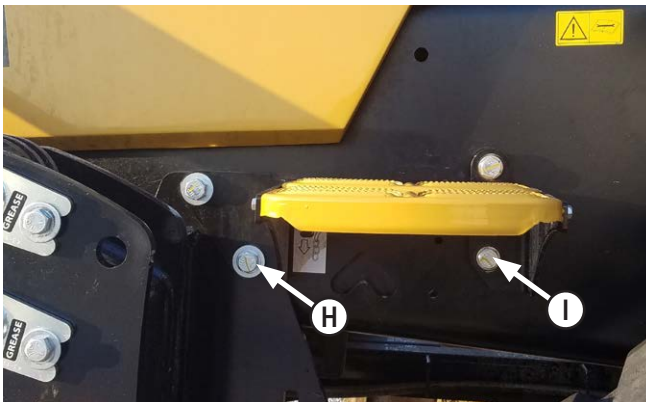
8. Raise the undercarriage and attach the rear bracket to the frame of the tractor behind the front axle with 2- 20mm x 70mm bolts, 4 - 3/4" ID thick washers, track tension guard, and 2 - 20mm nuts (F).
9. Raise the front of the undercarriage until the side holes line up with the holes on the tractor.

NOTE: Add shims between the undercarriage and the tractor frame to reduce any gap if necessary. Use shims until there is a gap of 1/16" or less on the front. See attached diagram for the proper location and orientation of each shim. Do Not put all of the shims on one side of the undercarriage.



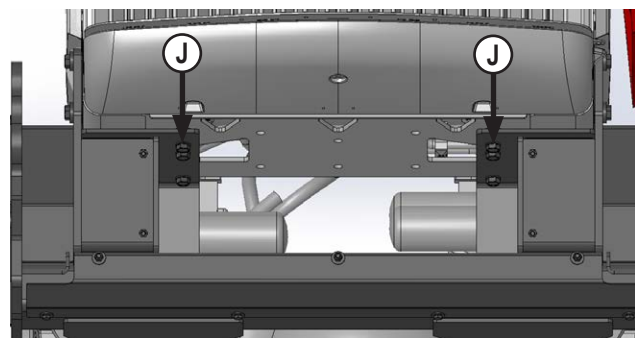
10. Install 8 - 20mm x 70mm bolts, 8 - 3/4" ID thick washers, shims if necessary, 8 - 3/4" flat washers, and 8 - 20mm nuts into the front side holes of the undercarriage and tractor frame (G).

NOTE: Install the left step when installing the left side rear 2 bolts.

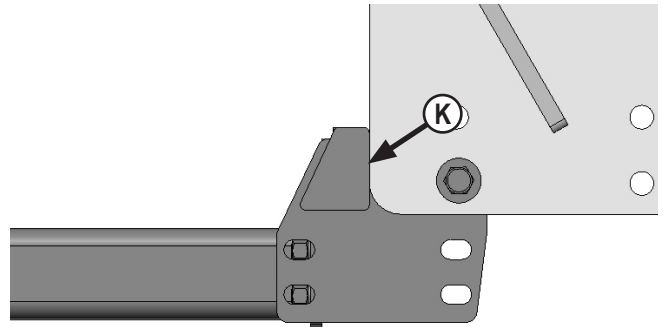


11. Attach the left side step with the left rear 2 bolts from Step #10 (H).

12. Attach the rear 2 holes of the side step to the tractor frame with 2 - 20mm x 70mm bolts, 2 - 3/4" flat washers, 4 spacers between the step and tractor frame and 2 - 20mm nuts (I).



13. Attach the front of the undercarriage to the tractor frame with 6 - 20mm x 70mm bolts, 12 - 3/4" flat washers, and 6 - 20mm nuts. Insert the bolts from the bottom (J).



14. Push the undercarriage back until the rear brackets are pushing up against the tractor frame (K).

15. Torque the rear bracket 20mm bolts to 432 ft-lbs (F).

16. Torque the rear bracket 3/4" bolts to 257 ft-lbs (E).

17. Torque the front vertical 20mm bolts to 432 ft-lbs (J).

18. Torque the side 20mm bolts to 432 ft-lbs (G & H).

19. Reinstall the front cover with 4 - 1/2" washers and 4 - 1/2" nuts.

NOTE: Installer is responsible to route hoses in a practical manner. The hoses need to be routed away from sharp and moving objects and need to be secure.

Maintenance

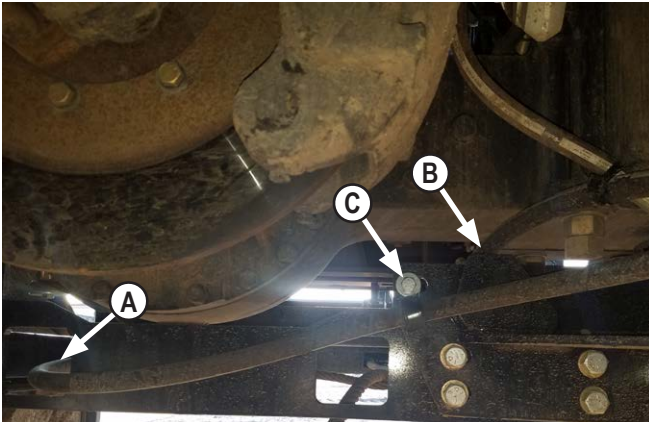
1. After first 8 hours of use, re-torque all bolts.
2. Check all fasteners regularly to ensure proper operation of equipment.
3. Inspect all equipment for existing or potential damages every 10 hours or less.
4. Make sure all non-rotating pins are secured properly.
5. Lubricate all joints with high quality grease.

Assembling Lift Components

Refer to the Blade Owner's Manual & Parts Book for instructions on how to assemble the lift components.

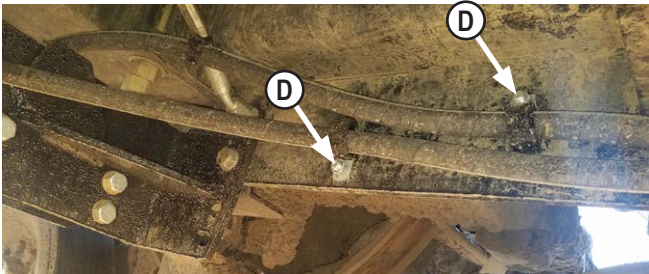
Hose Routing

1. Route hoses through the hose loops on the undercarriage.

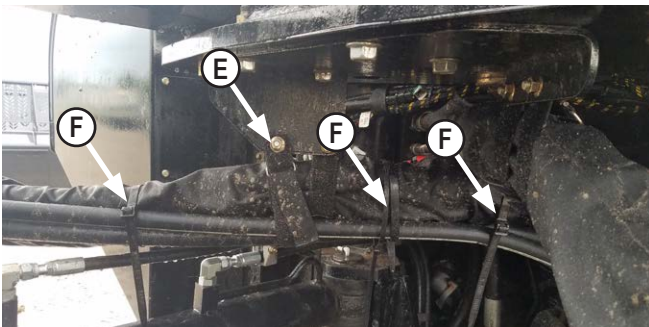


2. Route the left hoses through the square opening at the rear of the undercarriage (A) and the right hoses over the top of the undercarriage (B).

3. Attach a large P-clamp to the right rear bracket with 1 - 1/2" x 1-1/2" bolt, 2 - 1/2" flat washers and 1 - 1/2" lock nut to secure the left hose (C).



4. Continue to route the hoses along the right tractor frame and secure the hoses to the frame with 2 - large P-clamps, 2 - 1/2" x 1-1/4" bolts, 2 - 1/2" flat washers, 2 - 1/2" fender washers and 2 - 1/2" nuts (D).



5. Route the hoses up through the tractor and exit at the pivot location. Follow the tractor hoses through the pivot location.

6. Use a velcro strap to secure the hoses in the same location as the tractor hoses (F). Attach the strap with the original tractor hardware.

7. Use zip ties to attach hoses to the tractor hoses to avoid rubbing and pinch areas (F). Evenly place 2 zip ties before the velcro strap and 1 after with about 4" of spacing.



8. Use the P-Clamp bracket as a guide to drill 2 - 5/16" holes into the bracket on the tractor.

9. Attach the P-Clamp bracket to the tractor hydraulic connection bracket at the front of the rear tractor frame with 2 - 5/16" x 1" bolts, 4 - 5/16" washers and 2 - 5/16" lock nuts.

10. Route the hoses through a P-clamp and attach the P-Clamps to the bracket with 2 - 1/2" x 1-1/4" bolts, 4 - 1/2" washers and 2 - 1/2" lock nuts (G).



11. Continue to route the hoses through the rear frame by following the tractor hoses to the back of the tractor. Exit the frame and plug the hoses into the rear SCV's (H). Wrap the hoses in cordura where the hoses come out of the tractor frame as shown above.

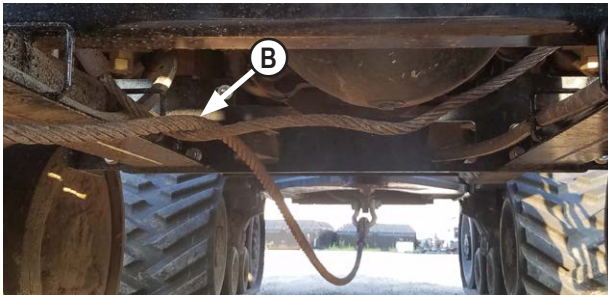
12. Use zip ties to attach hoses, where necessary, to avoid rubbing and pinch areas.

Tow Cable Installation

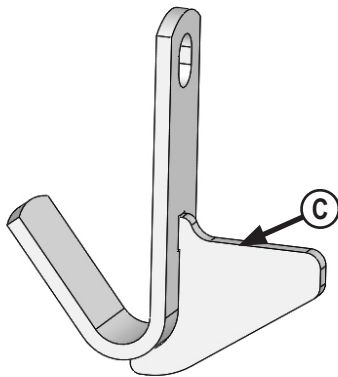
Note: Your undercarriage may vary slightly from the one shown in the pictures below, but the same installation procedure will be compatible.



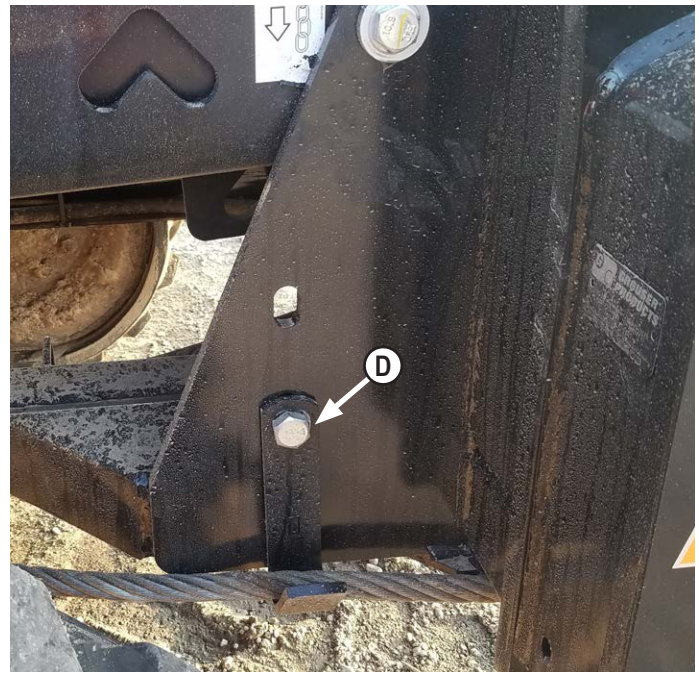
1. Add 2 spacers on each to lower the cable support (A).



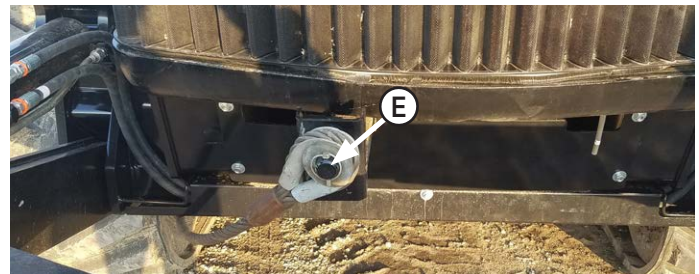
2. Route the cable underneath the undercarriage, then over the cable support and under the undercarriage on the right side (B).



3. Tow cable bracket was removed in Step #1 on Page 2. Remove plate from tow cable bracket (C).

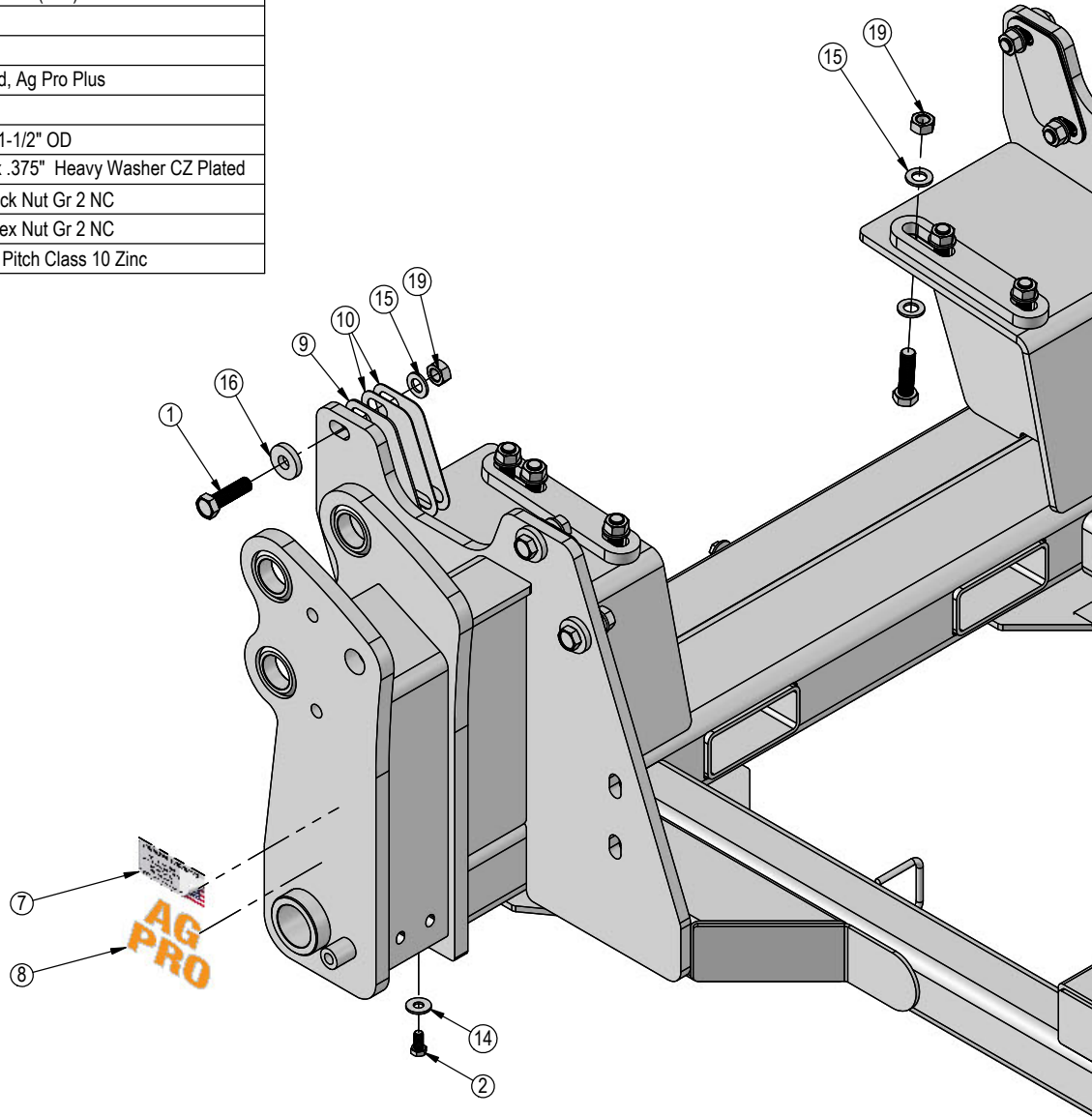


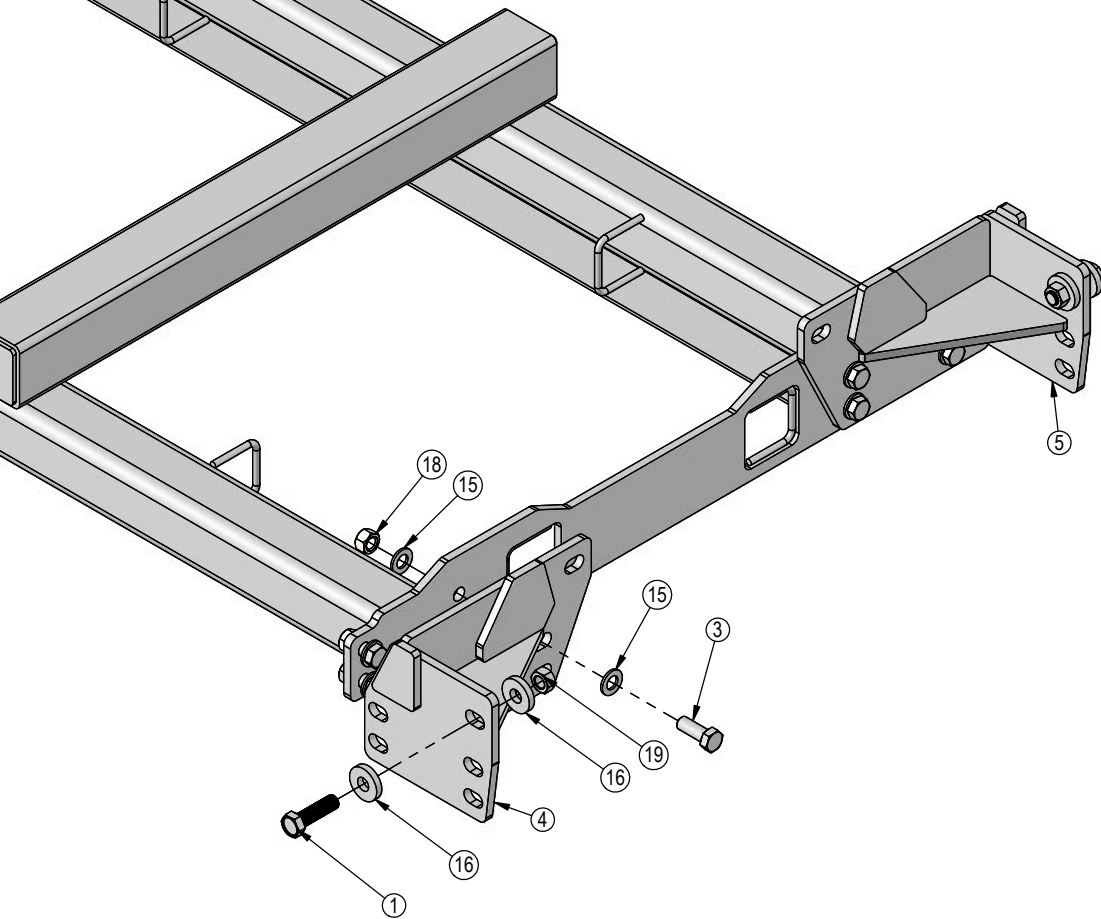
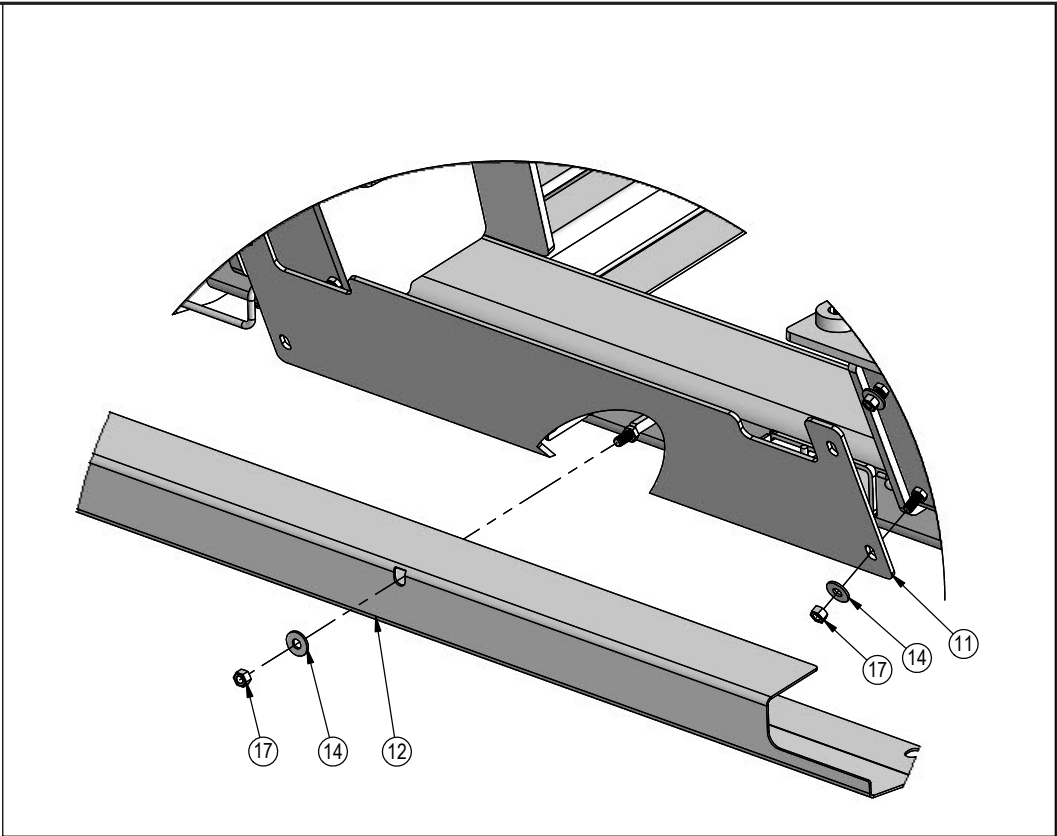
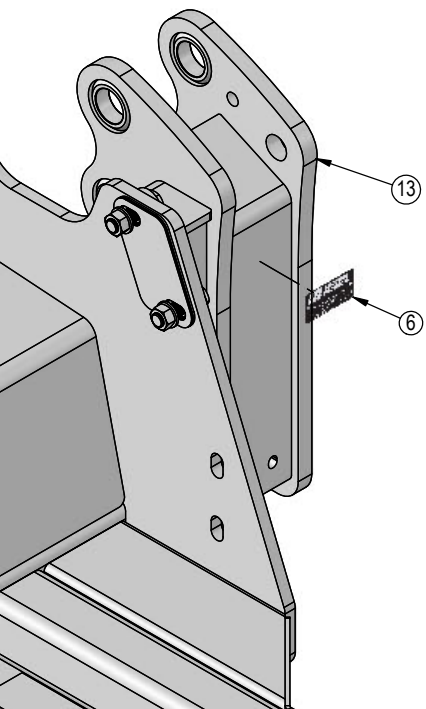
4. Attach modified tow cable bracket to the bottom slot on the right side of the undercarriage with original tow cable bracket hardware (D).



5. Move the original tow cable bracket to the right side and attach the tow cable with the original hardware (E).

ITEM NO.	QTY.	PART NO.	DESCRIPTION
1	16	16-1876	20mm x 2.5mm x 70mm Gr. 10.9 Hex Bolt
2	4	16-20124	1/2" x 1" Hex Bolt Gr.5 NC
3	8	16-20218	3/4" x 2" Hex Bolt Gr.5 NC
4	1	18-15945-L	Adapter Bracket
5	1	18-15945-R	Adapter Bracket
6	1	NA	Grouser Dozer Metal Serial Tag
7	1	27-18887	Grouser Name Plate Decal
8	2	27-40983	Ag Pro Decal
9	4	44-15966	Versatile T4 Shim Plate (.125")
10	8	44-15967	Versatile T4 Shim Plate (.06")
11	1	44-40556	Plate, Cover
12	1	44-40504	Plate, Cover
13	1	54-40555	Undercarriage Weld, Ag Pro Plus
14	9	57-20744	1/2" Washer
15	36	57-20757	3/4" Flat Washer - 1-1/2" OD
16	12	57-3680	3/4" ID x 2.00 OD x .375" Heavy Washer CZ Plated
17	5	70-20604	1/2" Hex Center Lock Nut Gr 2 NC
18	8	70-20607	3/4" Center Lock Hex Nut Gr 2 NC
19	16	70-20872-10	20mm Hex Nut 2.5 Pitch Class 10 Zinc





DWG. NO.: 41610-A

Improvements

Grouser Products Inc. is continually striving to improve its products. We reserve the right to change prices, specification, or equipment at any time without notice. We also reserve the right to make improvements or changes when it becomes practical and possible to do so without incurring any obligation to make changes or additions to the equipment sold previously.

Warranty

Grouser Products warrants to the original purchaser of each item that the product be free from defects in material and workmanship under normal use and service for a period of **two (2) years for Agriculture Series Blades and one (1) year for Heavy Duty Series from date of original retail delivery.**

The obligation of the consumer under this warranty:

1. To read the operators manual and to operate, lubricate, maintain and store equipment in accordance with the instructions listed in the operators manual.
2. To inspect equipment and if any part needs repair or replacement when continued use would cause damage or wear to other parts or safety.
3. All equipment or parts claimed to be defective in material or workmanship must be made available for inspection at the place of business of a dealer authorized to handle the equipment covered by this warranty, or, upon request by Grouser Products, shipped to the Grouser Products factory in West Fargo, North Dakota.

The obligation of the dealer under this warranty:

1. Complete warranty registration form and submit within 30 days of sale.
2. Contact Grouser Products for authorization prior to performing any warranty repairs or part replacement.
3. Complete warranty request form and submit with photos and supporting documentation.

The obligation of Grouser Products under this warranty:

1. Repair or replace, any equipment or parts, in the judgment of Grouser Products to be defective in material or workmanship.
2. Grouser Products will cover the cost of parts and ground shipping at dealer invoice only.
3. Grouser Products shall have no obligation to bear the cost of labor or transportation in connection with replacement or repair of any such defective parts.

This warranty does not cover:

1. Depreciation or damage caused by normal wear, accident, improper assembly, improper adjustments.
2. Improper maintenance including lack of proper lubrication, or improper use. Including loose bolts, nuts, or fitting due to over tightening or vibration after 20 hours of operation.
3. Repairs or alterations without authorization from a Grouser Products representative.
4. Grouser Products shall have no liability if the equipment has been altered or reworked without the written authorization of Grouser Products.

Grouser Products' parts, which are furnished under this warranty and properly installed, shall be warranted to the same extent as the original parts under this warranty if, and only if, such parts are found to be defective within the original warranty period covering the original equipment.

NO EMPLOYEE OR REPRESENTATIVE OF GROUSER PRODUCTS IS AUTHORIZED TO CHANGE THE WARRANTY IN ANY WAY OR GRANT ANY OTHER WARRANTY.

Contact Us

As always, if you have any questions about your system or other products made by Grouser, feel free to contact us.



755 2nd Ave NW - West Fargo, ND 58078
+1 701-282-7710 | info@grouser.com
www.grouser.com