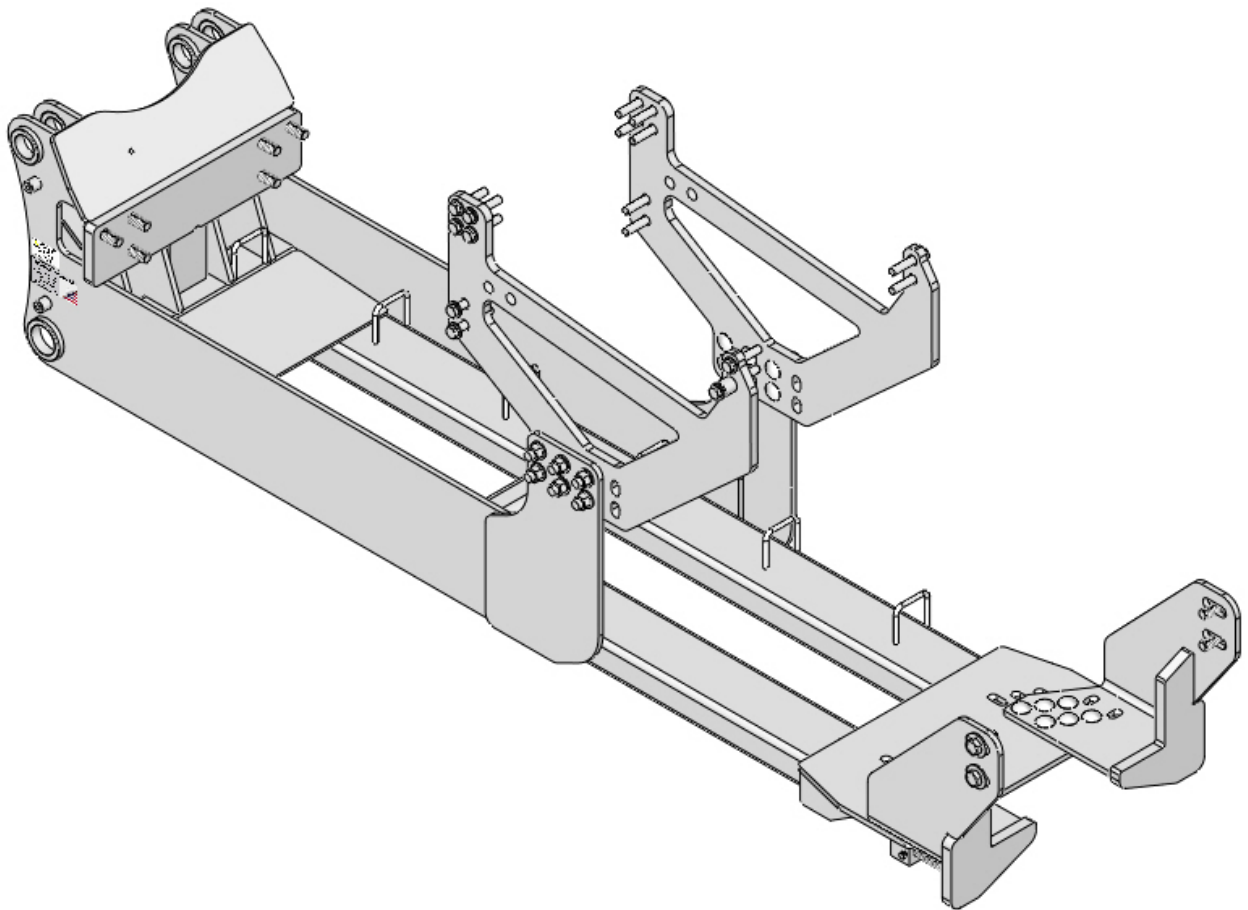




JOHN DEERE 8RT

FH-440 Undercarriage

Installation Instructions



For Models:

JD 8030: 8230T, 8330T, 8430T

JD 8RT (T3) IVT: 8295RT, 8320RT, 8345RT

JD 8RT (IT4) IVT: 8310RT, 8335RT, 8360RT

JD 8RT (FT4) IVT & E23: 8320RT, 8345RT, 8370RT

Purchase Date
Serial Number
Model Number
Tractor Model
Dealer

To The Owner

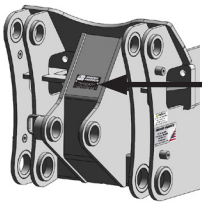
This manual contains information concerning the installation of the undercarriage. You have purchased dependable, long lasting equipment, but only by proper care and operation can you expect to receive the performance and long service built into our products. Please have all operators read this manual carefully and keep the manual available for ready reference. If you have any questions or concerns, contact Grouser Products.

Caution:

- Always use caution when working around any equipment.
- Always wear safety glasses.
- Follow tractor manufacturer's safety guidelines when installing this product.
- Use paint where necessary to prevent rust.
- Do not modify or permit anyone else to modify or alter the equipment and its components without first consulting Grouser Products.

Note:

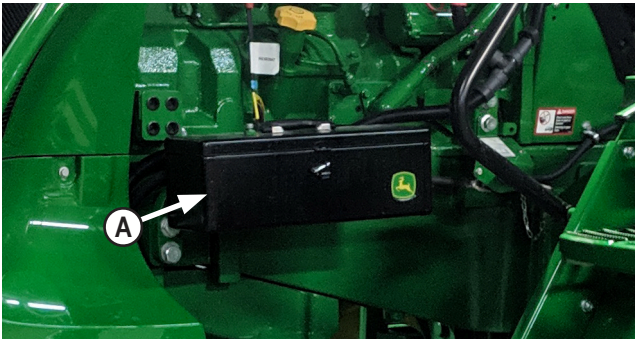
- When installing hardware, only finger tighten until all hardware is in place.
- A full diagram of the assembly with the full list of parts is on pages 6-7.
- Unstrap and remove any components that are attached for shipping.
- Read all instructions prior to performing installation.



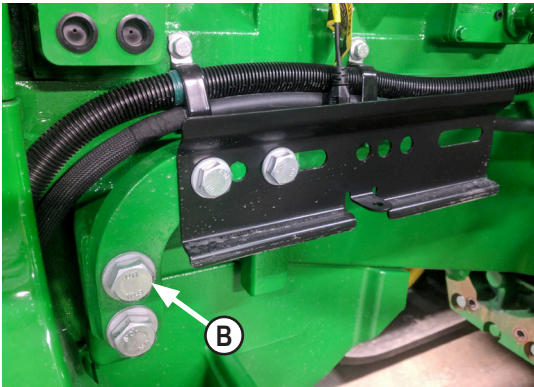
Serial Number Location

Pre-Installation

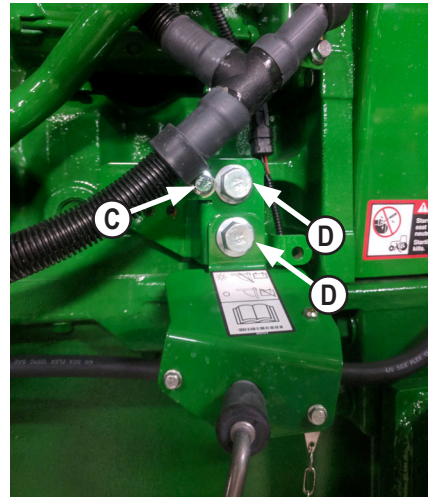
1. Disconnect the battery.
2. If applicable, remove the front weights, and front weight carrier.



3. Remove the toolbox (A) on the left side of the tractor.

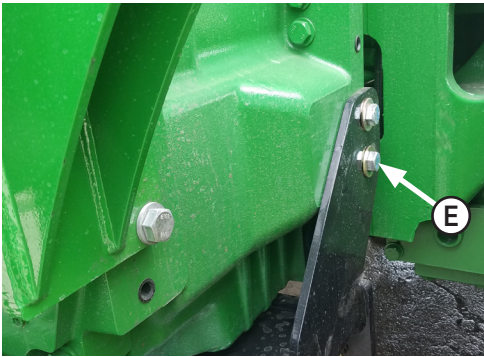


4. Remove the toolbox bracket (B) from the left side of the tractor. It will be reinstalled in Step #11.



5. Remove the bolt and spacer from the P-Clamp on the battery disconnect bracket (C). The P-Clamp will be reinstalled in Step #14.
6. Remove the hardware for the battery disconnect brackets on the left side of the tractor (D). The brackets will be reinstalled in Steps #12-13.

Undercarriage Installation



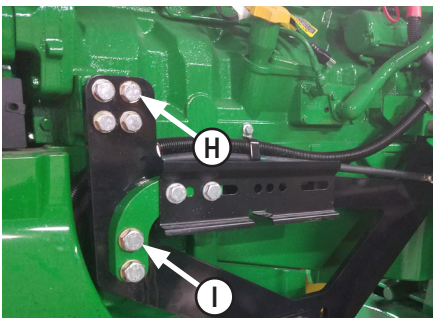
7. Install the left tail bracket on the left side of the transmission housing with 2 - 20mm x 50mm bolts and 2 - 3/4" flat washers (E).



8. Install the right tail bracket on the right side of the transmission housing with 2 - 20mm x 50mm bolts and 2 - 3/4" flat washers (F).



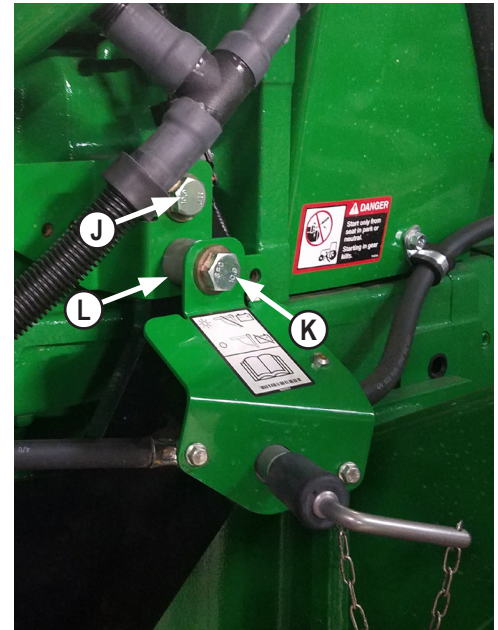
9. Install a side rail on the right side of the tractor with 8 - 16mm x 80mm bolts and 8 - 5/8" flat washers (G).



10. Install a side rail on the left side of the tractor with 4 - 16mm x 80mm bolts and 8 - 5/8" flat washers in the top front holes (H).

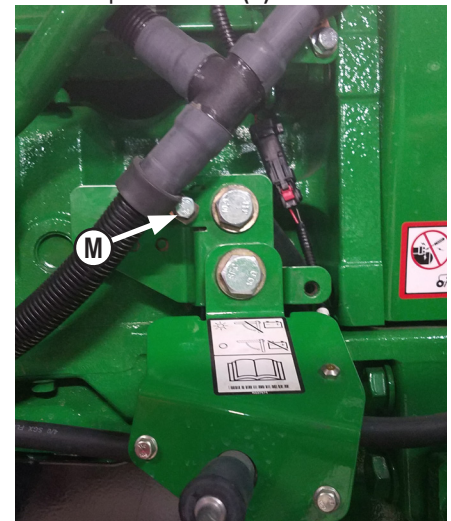
NOTE: When positioning the left side rail, place the side rail between the tractor frame and the battery disconnect brackets.

11. Attach the toolbox bracket and the left side rail to the tractor frame with 2 - 16mm x 100mm bolts and 2 - 5/8" flat washers (I).



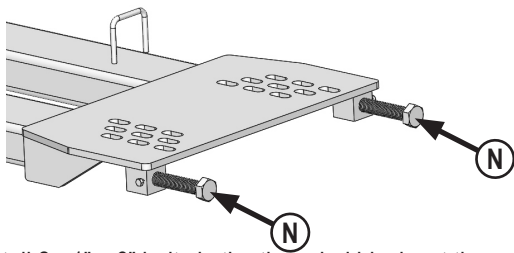
12. Attach the rear of the left side rail and the battery disconnect bracket to the tractor with 1 - 16mm x 80mm bolt and 1 - 5/8" flat washer in the top hole (J).

13. Attach the side rail and battery disconnect brackets to the tractor with 1 - 16mm x 110mm bolt, 1 - spacer hub and 1 - 5/8" flat washer in the bottom hole (K). Position the spacer hub as shown in the photo above (L).



14. Reattach the P-Clamp to the battery disconnect bracket with 1 - 8mm x 25mm bolt and 1 - 8mm washer (M).

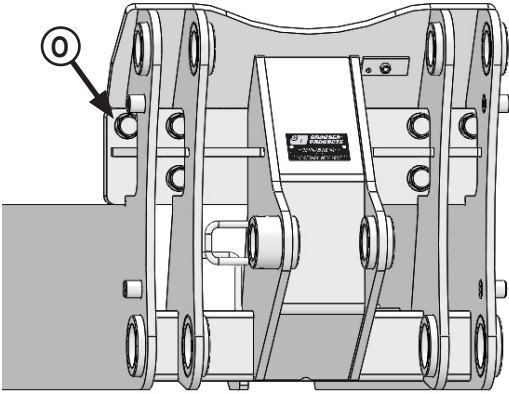
15. Torque the 8mm bolt on the P-clamp to 30 ft-lbs.



16. Install 2 - 1" x 6" bolts in the threaded blocks at the rear of the undercarriage (N). The bolts will be adjusted in Step #26.

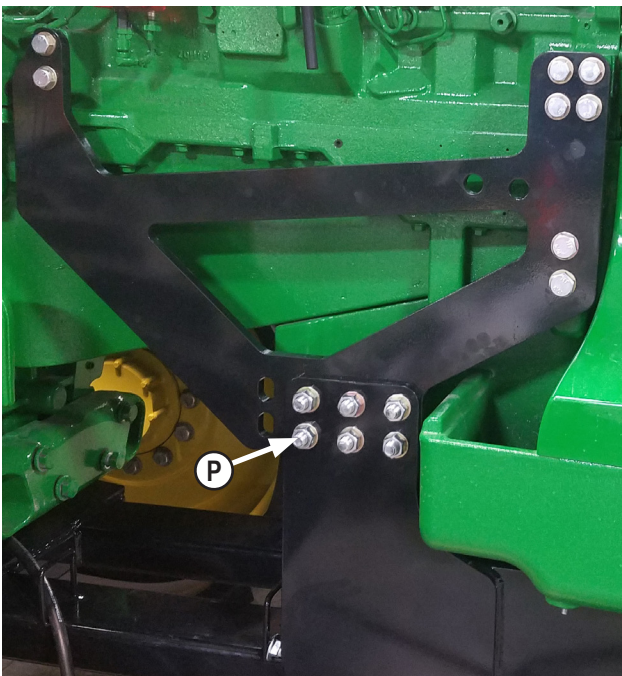


21. Attach the left and right tail brackets to the undercarriage with 12 - 3/4" x 2" carriage bolts, 12 - 3/4" flat washers, and 12 - 3/4" lock nuts (Q). Install the bolts from the top.
NOTE: Hand tighten the tail bracket bolts. The tail brackets need to be able to slide on the rear undercarriage plate until the bolts are tightened in later steps.



17. Center the undercarriage under the tractor.
18. Raise the front of the undercarriage until the holes on the undercarriage line up with the front holes on the tractor.
19. Attach the front of the undercarriage to the tractor with 6 - 20mm x 70mm bolts and 6 - 3/4" flat washers (O).

22. Torque the front 20mm bolts to 432 ft-lbs. (O).
23. Torque the side rail 16mm bolts to 269 ft-lbs. (G-K).
24. Torque the side rail 3/4" carriage bolts to 257 ft-lbs. (P).



20. Attach the left and right side rails to the undercarriage with 12 - 3/4" x 2-1/2" carriage bolts, 12 - 3/4" flat washers, and 12 - 3/4" lock nuts (P). Install the bolts from the inside.
NOTE: On some machines the side plates and rear brackets may attach to the undercarriage with different slots than what is shown in the pictures.

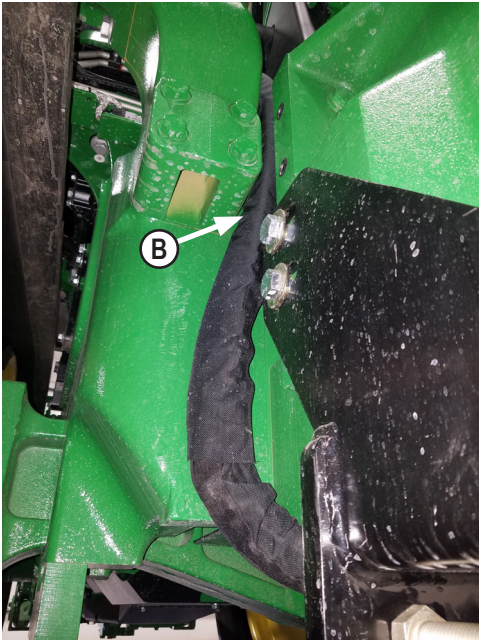


25. Evenly push the tail brackets back until they are tight against the bolt heads on the transmission housing (R). Torque the tail bracket 20mm bolts to 432 ft-lbs. (E-F).
26. Evenly unscrew the 1" bolts at the rear of the undercarriage to push the tail brackets against the bolt heads on the transmission housing. Torque the 1" bolts to 90-95 ft-lbs. (N).
27. Install 2 - 5/16" x 3/4" bolts into the blocks at the rear of the undercarriage to the lock the 1" x 6" bolts. Torque the 5/16" bolts to 19 ft-lbs.
28. Torque the tail bracket 3/4" carriage bolts to 257 ft-lbs. (Q).
29. Reattach the toolbox to the toolbox bracket.

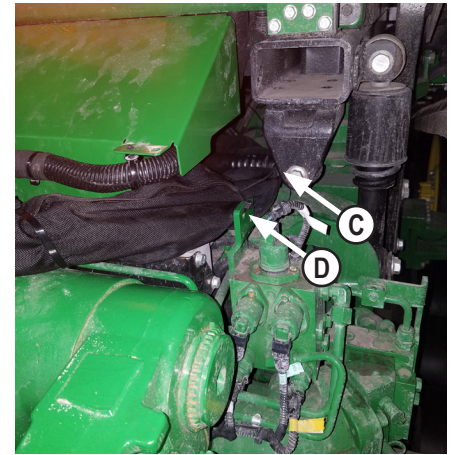
Hose Routing



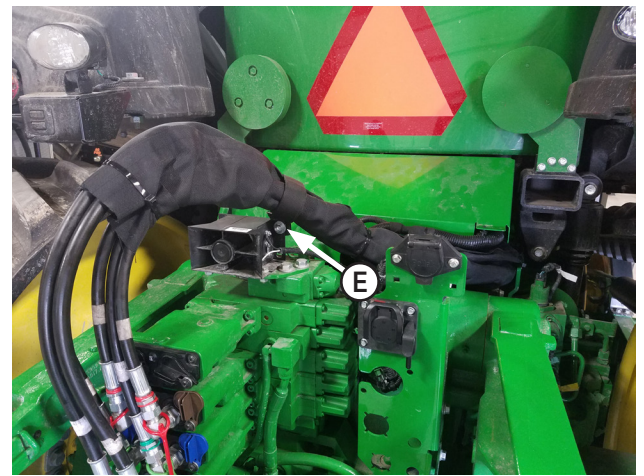
1. Route all the hoses from the front of the undercarriage through the hose loops on the undercarriage to the back of the undercarriage.
2. Remove the front right bolt from the transmission bottom cover. Reinstall the bolt with a large P-Clamp to hold the hoses behind the tail brackets under the tractor (A).



3. Route the hoses up behind the right tail bracket (B).
4. Continue to route the hoses under the cab to the rear of the tractor. Secure hoses with zip ties where necessary to avoid rubbing and pinch areas.



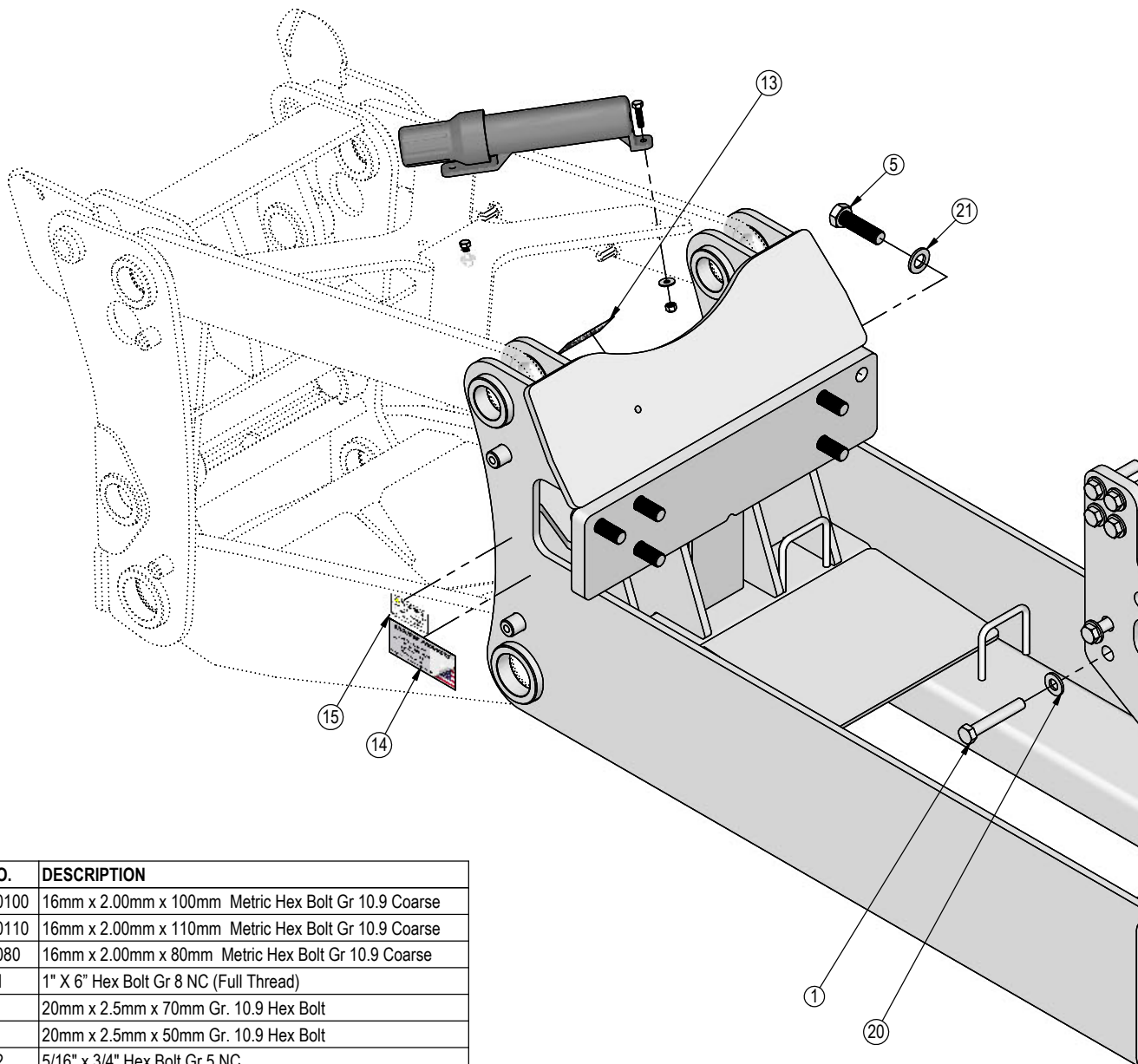
5. At the rear of the tractor, route the hoses underneath the panhard rod (C) and secure hoses with zip ties (D).



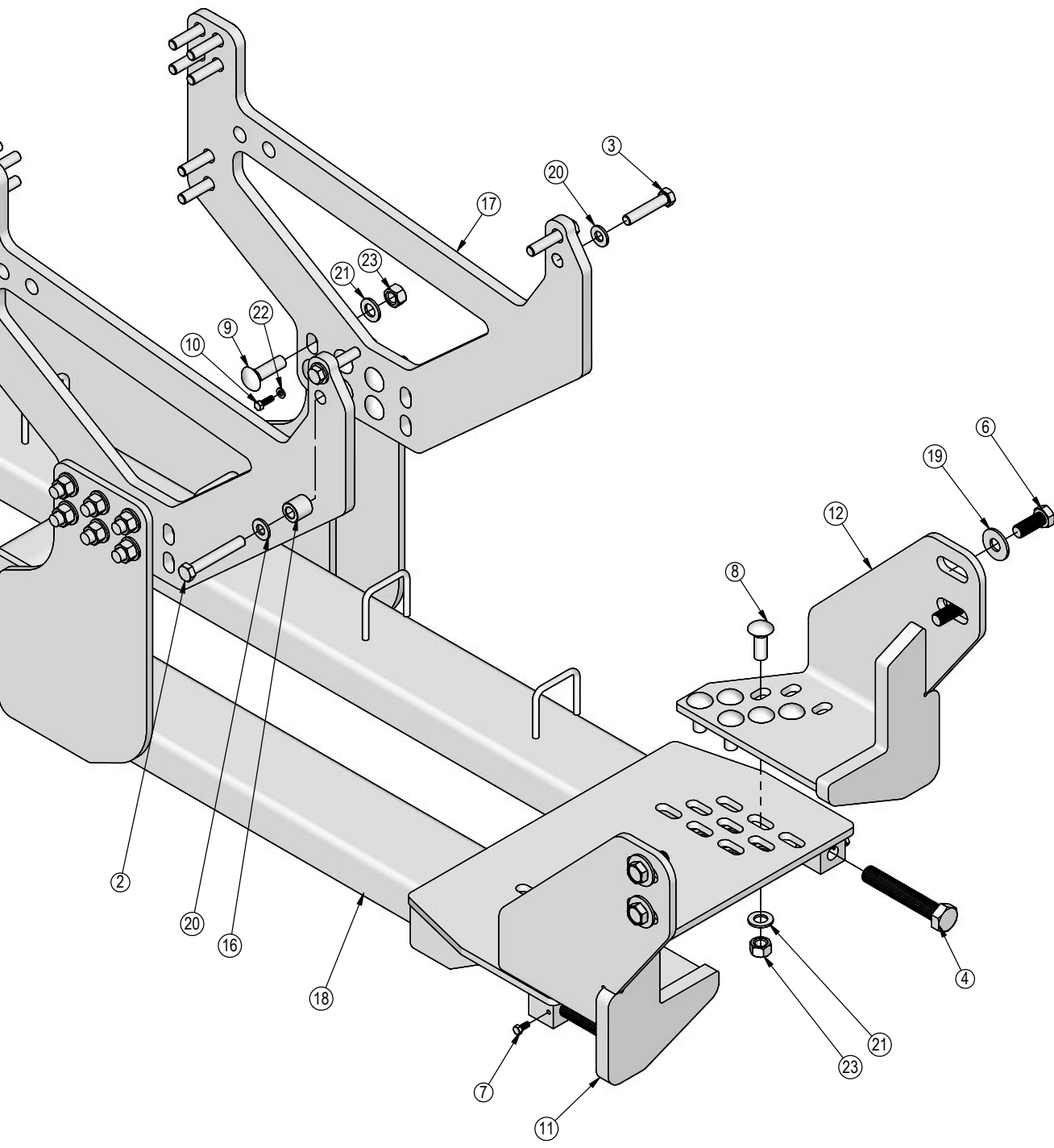
6. Secure the hoses with a velcro strap to the back up alarm bracket (E).
7. Plug the hoses into the open SCV's at the rear of the tractor.

Maintenance

1. After first 8 hours of use, re-torque all bolts. Check to make sure the 1" bolts at the back of the undercarriage are tight against the tail brackets and the tail brackets are tight against the transmission housing.
2. Check all fasteners regularly to ensure proper operation of equipment.
3. Inspect all equipment for existing or potential damages every 10 hours or less.



ITEM NO.	QTY.	PART NO.	DESCRIPTION
1	2	16-16200100	16mm x 2.00mm x 100mm Metric Hex Bolt Gr 10.9 Coarse
2	1	16-16200110	16mm x 2.00mm x 110mm Metric Hex Bolt Gr 10.9 Coarse
3	13	16-1620080	16mm x 2.00mm x 80mm Metric Hex Bolt Gr 10.9 Coarse
4	2	16-17271	1" X 6" Hex Bolt Gr 8 NC (Full Thread)
5	6	16-1876	20mm x 2.5mm x 70mm Gr. 10.9 Hex Bolt
6	4	16-1878	20mm x 2.5mm x 50mm Gr. 10.9 Hex Bolt
7	2	16-20032	5/16" x 3/4" Hex Bolt Gr 5 NC
8	12	16-21218	3/4" x 2.00" Carriage Bolt Gr.5
9	12	16-21220	3/4" x 2.50" Carriage Bolt Gr.5
10	1	16-812525	8mm x 1.25mm x 25mm Metric Hex Bolt Gr 10.9
11	1	18-17095-L	Bracket, Tail
12	1	18-17095-R	Bracket, Tail
13	1	NA	Grouser Dozer Metal Serial Tag
14	1	27-18887	Grouser Name Plate Decal
15	1	27-40962	Warning Prop 65 Decal
16	1	36-42018	Spacer Hub
17	2	44-41999	Plate, Side
18	1	54-42000	Undercarriage Weld
19	4	57-20747	3/4" Flat Washer
20	16	57-20756	5/8" Flat Washer - 1-5/16" OD
21	29	57-20757	3/4" Flat Washer - 1-1/2" OD
22	1	57-20821	8mm Flat Washer
23	24	70-20607	3/4" Center Lock Hex Nut Gr 2 NC
24	1	34-14961	Manual Canister Small
25	2	16-20035	5/16" x 1-1/4 " Hex Bolt Gr 5 NC
26	2	57-20741	1/4" Flat Washer
27	2	70-20611	5/16" Nyloc Hex Nut Gr 5 NC



DWG. NO.: 42000-A

Contact Us

As always, if you have any questions about your undercarriage or other products made by Grouser, feel free to contact us.

Grouser Products

755 2nd Ave NW - West Fargo, ND 58078

Phone: 1-800-747-6182

Fax: 1-701-282-8131

E-mail: grouser@grouser.com

Website: www.grouser.com

Improvements

Grouser Products Inc. is continually striving to improve its products. We reserve the right to change prices, specification, or equipment at any time without notice. We also reserve the right to make improvements or changes when it becomes practical and possible to do so without incurring any obligation to make changes or additions to the equipment sold previously.

Warranty

Grouser Products warrants to the original purchaser of each item that the product be free from defects in material and workmanship under normal use and service for a period of two years. If such equipment is found to be defective within two years, it is the obligation of Grouser Products under this warranty to repair or replace (exclusive of the cost of labor and transportation), any equipment or parts, in the judgment of Grouser Products to be defective in material or workmanship.

All equipment or parts claimed to be defective in material or workmanship must be made available for inspection at the place of business of a dealer authorized to handle the equipment covered by this warranty, or, upon request by Grouser Products, shipped to the Grouser Products factory in West Fargo, North Dakota. Grouser Products shall have no obligation to bear the cost of labor or transportation in connection with replacement or repair of any such defective parts in the setup process.

This warranty covers only defects in material and workmanship. It does not cover depreciation or damage caused by normal wear, accident, improper assembly, improper adjustments, improper maintenance including lack of proper lubrication, or improper use. Therefore, Grouser Products liability under this warranty shall not be effective or actionable unless the equipment is assembled, maintained and operated in accordance with the operating instructions accompanying the equipment. Grouser Products shall have no liability if the equipment has been altered or reworked without the written authorization of Grouser Products.

Grouser Products' parts, which are furnished under this warranty and properly installed, shall be warranted to the same extent as the original parts under this warranty if, and only if, such parts are found to be defective within the original warranty period covering the original equipment.

