



FH-400 John Deere 8000

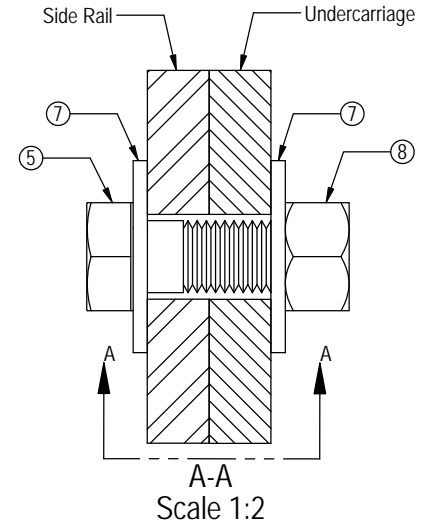
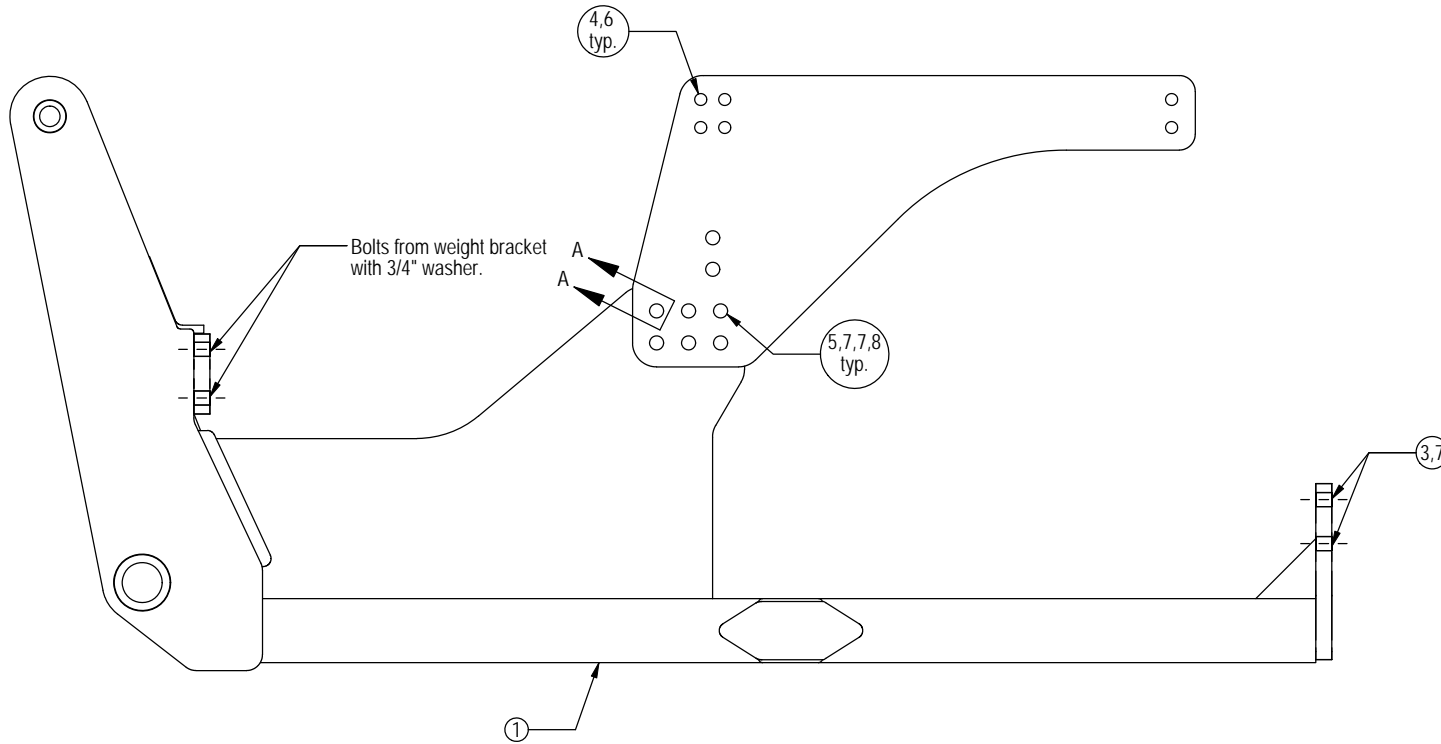
Undercarriage Installation Instructions

Caution:


- Always use precaution when working around any equipment.
- Always wear safety glasses.
- Follow tractor manufacture's safety guidelines when installing this product.
 1. Read all instructions prior to installation.
 2. Remove weights and weight bracket from front of tractor and keep 20mm x 80mm bolts for mounting undercarriage.
 3. Position the undercarriage (U/C) under the tractor and center with the frame of the tractor.
 4. Lift the U/C until the holes on the tractor line up with the U/C holes.
 5. At the front of the tractor, use the weight bracket bolts with a 3/4" washer (PN: 57-20747) on each bolt to attach the U/C to the front of the tractor. See attached diagram for clarification.
 6. Raise rear of undercarriage until holes on the tractor line up with the U/C holes.
Be sure that the U/C is tight against the tractor.
 7. Attach rear of U/C to tractor with 4 - 20mm x 70mm bolts (PN: 16-1876) with a 3/4" washer (PN: 57-20747) on each bolt.
 8. Attach the left and right side rails (PN: 44-7888) to the left and right sides of the U/C with 6 - 3/4" x 2-1/2" bolts (PN: 16-20220), 12 - 3/4" flat washers (PN: 57-20747), and 6 - 3/4" nuts (PN: 70-20607) for each side rail. See attached diagram for clarification.
 9. Start 6 - 5/8" x 3" bolts (PN: 16-20192) with a 5/8" flat washer (PN: 57-20746) on each bolt through the top holes of the left and right rail and the tractor frame. See attached diagram for clarification.
 10. Start 2 - 20mm x 70mm bolts (PN: 16-1876) with a 3/4" flat washer (PN: 57-20747) on each bolt through the lower two holes of the left and right rail and the tractor frame. See attached diagram for clarification.
 11. Once all bolts are installed, torque all 20mm bolts to 432 ft-lbs., all 3/4" bolts to 257 ft-lbs., and all 5/8" bolts to 154 ft-lbs.
 12. After first 8 hours of use, re-torque all bolts.
 13. Check all fasteners regularly to ensure proper operation of equipment.

THE INFORMATION CONTAINED IN THIS DRAWING IS THE SOLE PROPERTY OF GROUSER PRODUCTS INC ANY REPRODUCTION IN PART OR WHOLE WITHOUT THE WRITTEN PERMISSION OF GROUSER PRODUCTS INC IS PROHIBITED.

REVISIONS:



Item No.	Qty.	Part No.	Description
1	1	54-8541	FH-400 UC JD 8000
2	2	44-7888	FH-400 JD 8000 Side Plate
3	8	16-1876	20mm x 2.5mm x 70mm Metric Hex Bolt Gr 10.9
4	12	16-20192	5/8" x 3" Hex Bolt Gr 5 NC
5	12	16-20220	3/4" x 2-1/2" Hex Bolt Gr 5 NC
6	12	57-20746	5/8" Flat Washer
7	36	57-20747	3/4" Flat Washer
8	12	70-20607	3/4" Hex Center Lock Nut Gr 2 NC



GROUSER PRODUCTS INC.

755 2nd Ave NW Phone 701.282.7710
 West Fargo, ND 58078 Fax 701.282.8131
WWW.GROUSER.COM

TITLE FH-400 UC John Deere 8000		DWG. NO. 9553-A
Date: 12/9/2005	Scale: 1:12	Sheet: 1