



6200 John Deere Prototype

Undercarriage Installation Instructions

Caution:

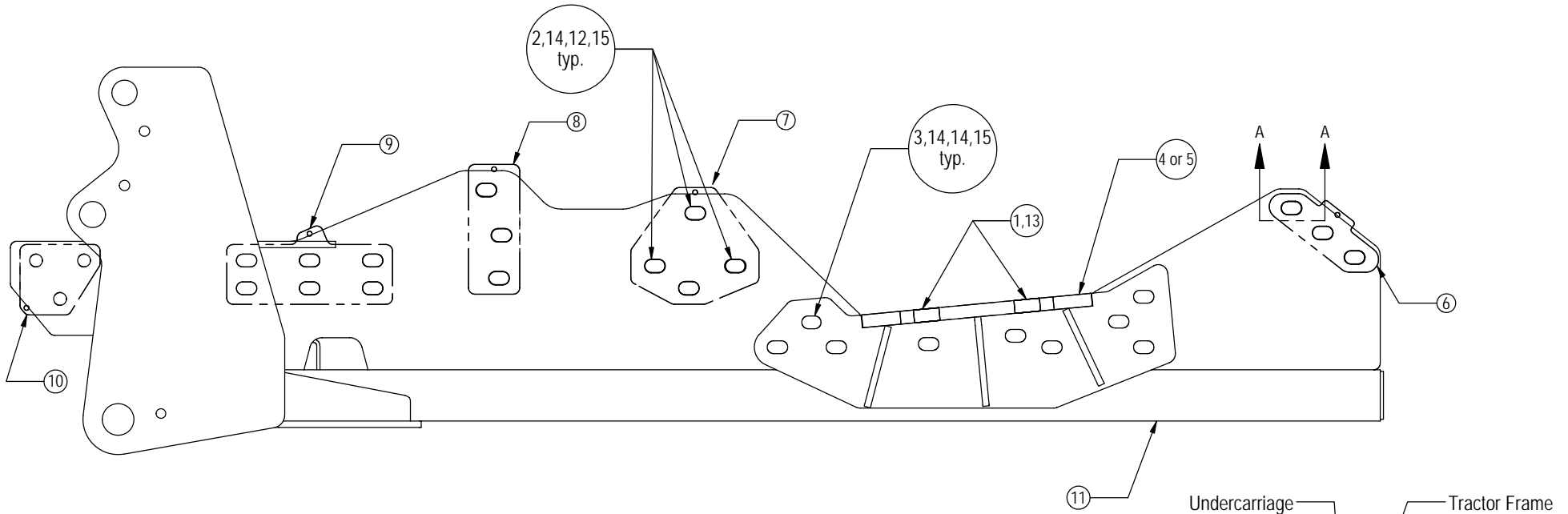
- Always use precaution when working around any equipment.
- Always wear safety glasses.
- Follow tractor manufacturer's safety guidelines when installing this product.
 1. Read all instructions prior to performing installation.
 2. If applicable, remove front weights, weight bracket, toolbox, and front axle brace from front of tractor.
 3. Attach the left and right axle brackets (PN: 18-13345-R,L) to the axle with 6 - 24mm X 150mm bolts (PN: 16-1875) and 6 - axle mount washers (PN: 57-3098) into the vertical holes on each side. Flat sides of washers should meet for proper clearance. Tighten the 24mm bolts until the brackets are tight against the axle.

NOTE: Some tractors only have 4 holes in the axle. The installation instructions are still compatible, but only use 4 bolts and washers instead of 6 in Step #3.
 4. Position undercarriage (U/C) under tractor, center on the frame of the tractor. Lift U/C until holes in U/C line up with holes in the side of the tractor frame.

NOTE: Add spacers between the U/C and the tractor frame if necessary. See attached diagram for the proper location and orientation of each spacer.
 5. Install 16 - 7/8" X 2-1/2" bolts (PN: 16-20540) with a 7/8" heavy washer (PN: 57-3681) on each bolt through the holes on each side of the U/C and the tractor frame. Leave the front 3 holes on each side until Step #11. See attached diagram for any clarification.
 6. After all the bolts are through the tractor frame, attach with a 7/8" heavy flat washer (PN: 57-20818) and a 7/8" nut (PN: 70-20598) on each bolt.
 7. Attach the left and right axle brackets to the U/C with 9 - 7/8" X 3" bolts (PN: 16-20542) with a 7/8" heavy washer (PN: 57-3681) on each bolt.
 8. After all the bolts are through the U/C holes, attach with a 7/8" heavy washer (PN: 57-3681) and a 7/8" nut (PN: 70-20598) on each bolt.
 9. Slide the axle brackets toward the center of the tractor. Torque the 24mm bolts to 909 ft-lbs.
 10. Torque the 7/8" bolts on the axle bracket to 350 ft-lbs. and then torque the remaining 7/8" bolts to 350 ft-lbs.

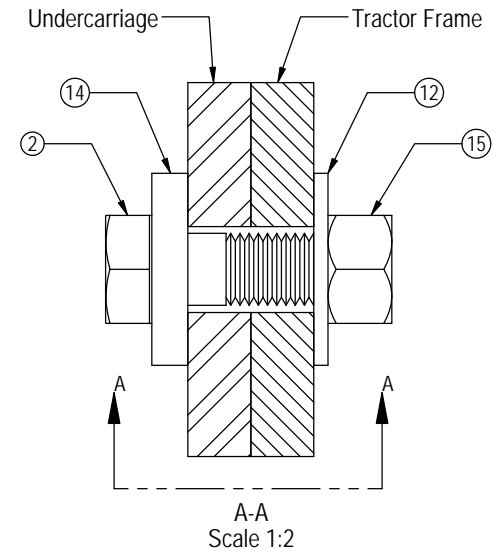
Caution: When drilling, be aware of all parts behind the material being drilled so that you do not mistakenly hit or puncture components on engine side of tractor frame.
 11. Using the U/C as a guide, drill 6 - 7/8" holes at the front of the U/C through the side of the tractor frame.
 12. Use same hardware as in Steps #5 & 6 for the previously drilled holes. Torque 7/8" bolts to 350 ft-lbs.
 13. After first 8 hours of use, re-torque all bolts.
 14. Check all fasteners regularly to ensure proper operation of equipment.

THE INFORMATION CONTAINED IN THIS DRAWING IS THE SOLE PROPERTY OF GROUSER PRODUCTS INC ANY REPRODUCTION IN PART OR WHOLE WITHOUT THE WRITTEN PERMISSION OF GROUSER PRODUCTS INC IS PROHIBITED.



Note: Install all bolts before tightening.

Item No.	Qty.	Part No.	Description
1	12	16-1875	24mm x 3.0mm x 150mm Metric Hex Bolt Gr. 10.9
2	38	16-20540	7/8" x 2-1/2" Hex Bolt Gr 8 NC
3	18	16-20542	7/8" x 3" Hex Bolt Gr 8 NC
4	1	18-13345-L	6X00 JD 9030W Axle Bracket Left
5	1	18-13345-R	6X00 JD 9030W Axle Bracket Right
6	4	44-12906	6200 - JD Prototype - Shim Plate - Rear
7	4	44-12907	6200 - JD Prototype - Shim Plate - 4 Hole
8	4	44-12908	6200 - JD Prototype - Shim Plate - 3 Hole
9	4	44-12909	6200 - JD Prototype - Shim Plate - 6 Hole
10	4	44-12916	6200 - JD Prototype - Shim Plate - Front
11	1	54-12130	6200 UC JD Prototype
12	38	57-20818	7/8" Flat Washer Heavy Duty Gr. 8 (USS)
13	12	57-3098	2.50" O.D. x 1.05" I.D. x .50" Washer CZ Plated (JD Axle Washer)
14	74	57-3681	2.25" O.D. x .875" I.D. x .375" Washer CZ Plated (JD Axle Washer)
15	56	70-20598	7/8" Nex Nut Gr 8 NC



GROUSER PRODUCTS INC.

755 2nd Ave NW Phone 701.282.7710
 West Fargo, ND 58078 Fax 701.282.8131
 WWW.GROUSER.COM

TITLE: 6200 UC JD Prototype Assy.

Date: 7/1/2009

DWG. NO.: 12900-A