



# FH-400 Case Magnum Tier 3 - Mid Frame

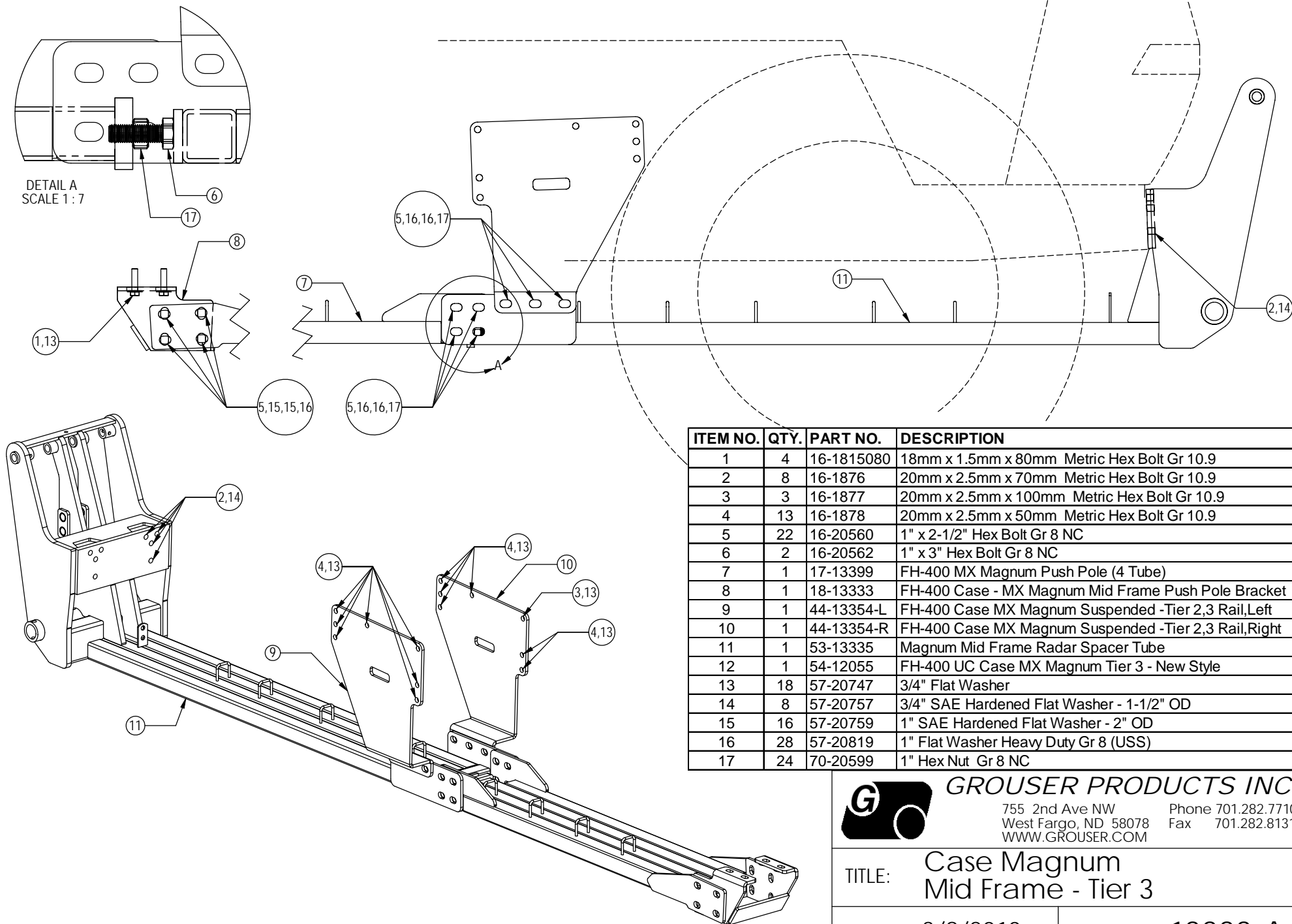
## Undercarriage Installation Instructions

### **Caution:**

- Always use precaution when working around any equipment.
  - Always wear safety glasses.
  - Follow tractor manufacturer's safety guidelines when installing this product.
1. Read all instructions prior to installation.
  2. Remove weights and weight bracket from front of tractor if necessary.
  3. Remove the bolts from the radar. Insert the radar spacer (PN: 53-13335) and reattach the radar with 20mm x 100mm bolts (PN: 16-1877)
  4. Position the undercarriage (U/C) under the tractor and center with the frame of the tractor.
  5. Lift the U/C until the holes on the tractor line up with the holes on the U/C.
  6. At the front of the tractor, use 8 - 20mm x 70mm bolts (PN: 16-1876) with a 3/4" SAE flat washer (PN: 57-20757) on each bolt to attach the U/C to the front of the tractor. Tighten finger tight. See the attached diagram for any clarification.
  7. Use 7 - 20mm x 50mm bolts (PN: 16-1878) with a 3/4" flat washer (PN: 57-20747) on each bolt in the holes of the left rail (PN: 44-13354-L) to attach the left rail to the tractor frame.
  8. Remove the ground boss from the right side of the tractor. The boss will be reinstalled in Step #9.
  9. Use 1 - 20mm x 100mm bolt (PN: 16-1877) with the ground boss and a 3/4" flat washer (PN: 57-20747) through the top rear hole of the right rail (PN: 44-13354-R) to attach the right rail to the tractor frame. See the attached diagram for any clarification.
  10. Use 6 - 20mm x 50mm bolts (PN: 16-1878) with a 3/4" flat washer (PN: 57-20747) on each bolt through the remaining holes of the right rail to attach the right rail to the tractor frame.
  11. Attach the left and right rails to the left and right sides of the undercarriage with 3 - 1" bolts (PN: 16-20560), 6 - 1" heavy duty flat washers (PN: 57-20819), and 3 - 1" nuts (PN: 70-20599) for each side.
  12. Once all bolts are installed, torque the front 20mm bolts to 432 ft-lbs.
  13. Torque the 20mm bolts on the side rails to 432 ft-lbs.
  14. Torque the 1" bolts attaching the side rails to the U/C to 903 ft-lbs.
  15. Carefully remove the bolts holding the drawbar bracket to the tractor rear axle housing. Discard the removed bolts.
  16. Attach the push pole bracket (PN: 18-13333) to the drawbar under the rear axle with 4 - 18mm bolts (PN: 16-1815080) and a 3/4" flat washer (PN: 57-20747) on each bolt. See attached diagram for the correct orientation of the bracket.

- 17.** Push the push pole bracket back until it is tight against the tractor's drawbar bracket.
- 18.** Torque the 18mm x 80mm bolts to 405 ft-lbs.
- 19.** Install 2 - 1" x 3" bolts (PN: 16-20562) and 2 - 1" nuts (PN: 70-20599) on the front end of the push pole (PN: 17-13399). Turn the 1" bolts in for installation. The bolts will be adjusted after the push pole is installed. See the attached diagram for proper installation of the bolts and nuts.
- 20.** Position the push pole (PN: 17-13399) under the tractor. See the attached diagram for the correct orientation of the push pole.
- 21.** Lift the end of the push pole with the installed bolts and nuts from Step #19 up to the U/C.
- 22.** Attach the push pole to the U/C with 4 - 1" x 2-1/2" bolts (PN: 16-20560), 8 - 1" flat heavy duty washers (PN: 57-20819), and 4 - 1" nuts (PN: 70-20599) for each side. Tighten finger tight.
- 23.** Attach the rear of the push pole to the push pole bracket with 8 - 1" x 2-1/2" bolts (PN: 16-20560), 16 - 1" SAE flat washers (PN: 57-20759), and 8 - 1" nuts (PN: 70-20599). Finger tighten the bolts and nuts.
- 24.** Push the push pole as far forward as possible. Torque the eight rear 1" bolts on the push pole to 903 ft-lbs. and then torque the eight front 1" bolts on the push pole to 903 ft-lbs.
- 25.** Unscrew the two 1" x 3" bolts at the front of the push pole until they are tight against the U/C. Torque the 1" bolts to 90-95 ft-lbs.
- 26.** Tighten the nuts up tight against the push pole. Use the nuts to lock the bolts in place.
- 27.** After first 8 hours of use, re-torque all bolts.
- 28.** Check all fasteners regularly to ensure proper operation of equipment.

THE INFORMATION CONTAINED IN THIS DRAWING IS THE SOLE PROPERTY OF GROUSER PRODUCTS INC ANY REPRODUCTION IN PART OR WHOLE WITHOUT THE WRITTEN PERMISSION OF GROUSER PRODUCTS INC IS PROHIBITED.



ITEM NO.	QTY.	PART NO.	DESCRIPTION
1	4	16-1815080	18mm x 1.5mm x 80mm Metric Hex Bolt Gr 10.9
2	8	16-1876	20mm x 2.5mm x 70mm Metric Hex Bolt Gr 10.9
3	3	16-1877	20mm x 2.5mm x 100mm Metric Hex Bolt Gr 10.9
4	13	16-1878	20mm x 2.5mm x 50mm Metric Hex Bolt Gr 10.9
5	22	16-20560	1" x 2-1/2" Hex Bolt Gr 8 NC
6	2	16-20562	1" x 3" Hex Bolt Gr 8 NC
7	1	17-13399	FH-400 MX Magnum Push Pole (4 Tube)
8	1	18-13333	FH-400 Case - MX Magnum Mid Frame Push Pole Bracket
9	1	44-13354-L	FH-400 Case MX Magnum Suspended -Tier 2,3 Rail,Left
10	1	44-13354-R	FH-400 Case MX Magnum Suspended -Tier 2,3 Rail,Right
11	1	53-13335	Magnum Mid Frame Radar Spacer Tube
12	1	54-12055	FH-400 UC Case MX Magnum Tier 3 - New Style
13	18	57-20747	3/4" Flat Washer
14	8	57-20757	3/4" SAE Hardened Flat Washer - 1-1/2" OD
15	16	57-20759	1" SAE Hardened Flat Washer - 2" OD
16	28	57-20819	1" Flat Washer Heavy Duty Gr 8 (USS)
17	24	70-20599	1" Hex Nut Gr 8 NC



**GROUSER PRODUCTS INC.**

755 2nd Ave NW Phone 701.282.7710  
 West Fargo, ND 58078 Fax 701.282.8131  
 WWW.GROUSER.COM

TITLE: **Case Magnum  
 Mid Frame - Tier 3**

Date: **3/8/2010** DWG. NO.: **13333-A**