



770 Wide Frame - Wheeled Undercarriage Installation Instructions

Caution:

- Always use precaution when working around any equipment.
- Always wear safety glasses.
- Follow tractor manufacturer's safety guidelines when installing this product.

1. Read all instructions prior to installation.

2. Remove existing toolboxes, front weights, and tow cable holder if equipped. Tow cable can be reinstalled later if a bracket is purchased from Grouser Products.

NOTE: If rear 1" bolts are installed on the undercarriage, back out so the undercarriage will fit on the rear plate on the tractor frame.

3. Position the undercarriage (U/C) under tractor and center on the frame of the tractor.

4. Lift the rear of the U/C and set the top plates of the U/C on the cross member. Push the U/C back until the vertical push plates are firmly against the cross member. Lift the U/C to within 3/4" of touching the tractor frame.

5. Insert 10 - 20mm x 90mm bolts (PN: 16-1510) with a 20mm flat washer (PN: 57-20827-10) on each bolt through the front holes of the tractor frame that line up with the front vertical holes of the U/C.

6. After all bolts are through the tractor frame and U/C, attach with a 3/4" heavy washer (PN: 57-3680) and a 20mm nut (PN: 70-20872-10). Verify that the rear of the U/C is firmly against the cross member.

7. At the rear of the undercarriage and pivot area of the tractor, hook the rear hose routing bracket to the tractor frame and bolt to the rear of the undercarriage with 1" x 3" bolts (PN: 16-20562), 1" hardened flat washers (PN: 57-20759) and 1" nuts (PN: 70-20599). The nut will fit between the plates on the brackets. See attached diagram for clarification.

8. Center the bracket on the undercarriage and tractor as close as you can. Torque the 1" bolts to 600 ft-lbs. There can be a gap between the bracket and the undercarriage.

9. Tighten the rear vertical bolts up tight against the bottom of the tractor frame. Torque the rear vertical 1" bolts to 500-600 ft-lbs.

10. Tighten front vertical bolts until frame is tight vertically. Torque the front 20mm bolts to 432 ft-lbs.

11. Attach the upper support arms (PN: 11-14548-R,L) to the U/C with 2 - 1" x 3-1/2" bolts (PN: 16-20564), 4 - 1" heavy duty flat washer (PN: 57-20819), and 2 - 1" nuts (PN: 70-20599) on each side of the U/C.

12. Attach the upper support arms to the tractor with a 1-1/4" x 3-1/2" bolt (PN: 16-20896), 2 - 1-1/4" flat washer (PN: 57-11671), and a 1-1/4" nut (PN: 70-20981) on each side.

13. Attach the wheeled side plates (PN: 44-14383) to each side of the U/C with 4 - 1" x 2" bolts (PN: 16-20558) and a 1" x .375" thick washer (PN: 57-3682) on each bolt.

14. Use 2 - 1" x 3" bolt (PN: 16-20562) with a 1" x .375" thick washer (PN: 57-3682) on each bolt to attach the plates to the tractor frame. After the bolts are through the frame, attach with another 1" x .375" thick washer and a 1" nut (PN: 70-20599) on each bolt.

15. Once all bolts have been installed, torque the 1-1/4" bolts to 1,105 ft-lbs. and the remaining 1" bolts to 903 ft-lbs,

16. If purchased from Grouser Products, attach the tow cable support bracket (PN: 18-14570) to the front of the nose casting with 2 - 1" x 3" bolts (PN: 16-20562), 4 - 1" heavy duty flat washers (PN: 57-20819) and 2 - 1" nuts (PN: 70-20599).

17. Bolt the original tow cable holder to the bracket with a 24mm x 70mm bolt (PN: 16-2494) and a 1" heavy duty flat washer (PN: 57-20819).

18. Torque the 1" bolts to 903 ft-lbs and the 24mm bolt to 570 ft-lbs.

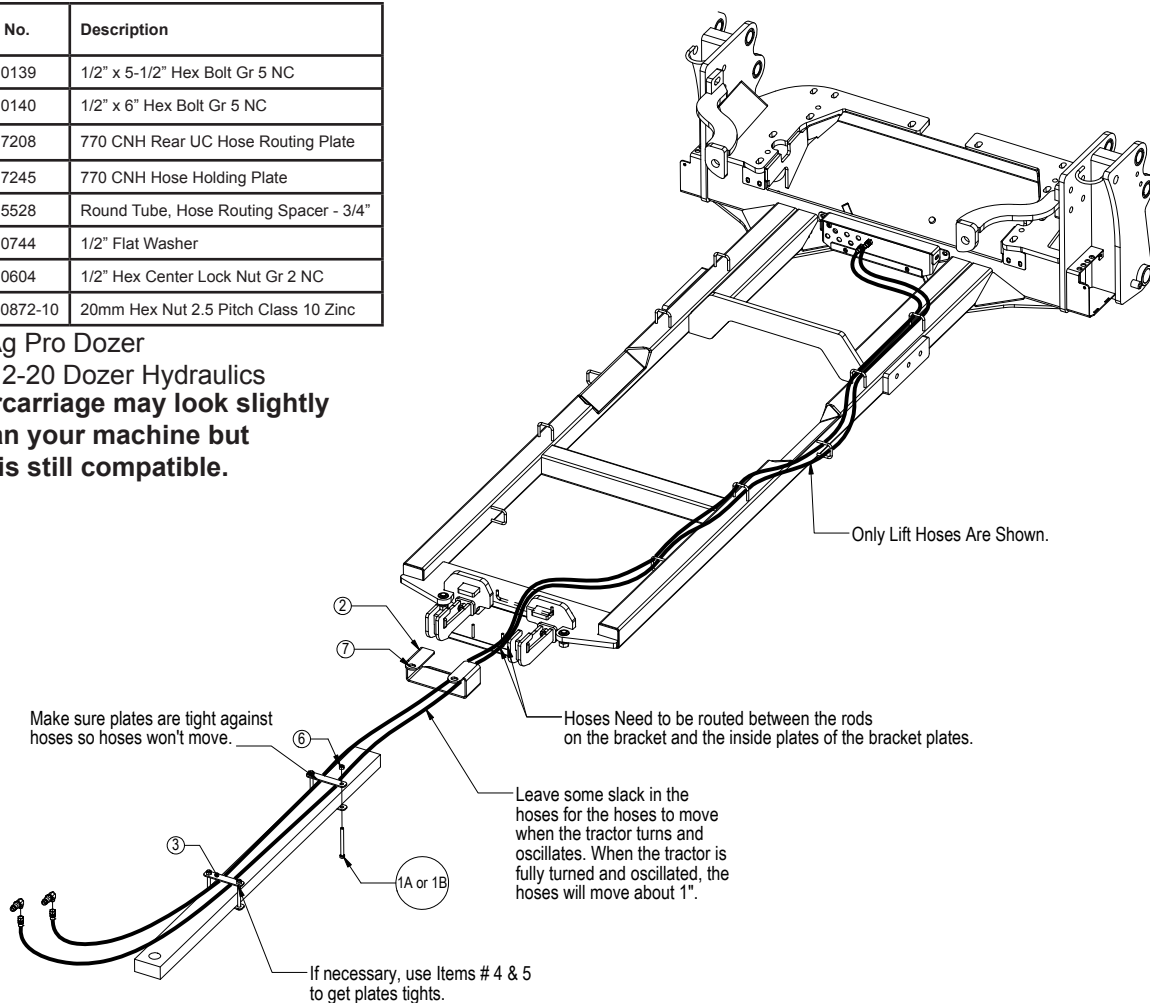
19. After first 8 hours of use, re-torque all bolts. Check all fasteners regularly to ensure proper operation of equipment.

Item No.	Qty.	Part No.	Description
1A	4	16-20139	1/2" x 5-1/2" Hex Bolt Gr 5 NC
1B	4	16-20140	1/2" x 6" Hex Bolt Gr 5 NC
2	1	44-17208	770 CNH Rear UC Hose Routing Plate
3	4	44-17245	770 CNH Hose Holding Plate
4	4	53-15528	Round Tube, Hose Routing Spacer - 3/4"
5	4	54-20744	1/2" Flat Washer
6	4	70-20604	1/2" Hex Center Lock Nut Gr 2 NC
7	2	70-20872-10	20mm Hex Nut 2.5 Pitch Class 10 Zinc

Item #A for Ag Pro Dozer

Item #B for 12-20 Dozer Hydraulics

Note: Undercarriage may look slightly different than your machine but installation is still compatible.



1. Attach the rear hose routing plate (PN: 44-17208) to the tractor frame behind the pivot point and before the drawbar. There will be 2 bolts sticking down. Attach with a 20mm nut (PN: 70-20872-10) on each side. Make sure the lip of the plate is facing towards the front of the tractor. See picture below for clarification.

2. Check all fasteners regularly to ensure proper operation of equipment.

For the following steps, refer to the hose routing diagram for further clarification.

3. Route all the hoses from the front of the undercarriage, thru the hose loops on the undercarriage and thru the large loop at the rear of the undercarriage. Send hoses thru the bracket at the pivot point but stay on the outside of the rods that are by the center large nut on the tractor. The hoses should be between the rods on the bracket and the inside plates of the bracket.

4. Route the hoses thru the hose routing plate that was installed in Step #1.

5. Use Zip Ties to group some hoses on the left and right side of the hose routing plate. Strap the zip Ties over the top part of the routing plate that is bolted to the tractor frame to keep the hoses towards the outside of each side of the routing plate.

6. Continue to route the hoses down the top of the drawbar to the back of the tractor where you can plug them into the tractor SCV Ports.

7. Strap the hoses to the drawbar with a set of hose holding plates (PN: 44-17245) in 2 locations. Place 1 set as close to the front of drawbar as possible and the other behind the axle before the hoses would be routed upwards to be plugged in.

8. Make sure to keep some slack in the hose between the pivot point of the tractor and the first set of hose holding plates. The hoses will move when the tractor moves and oscillates.

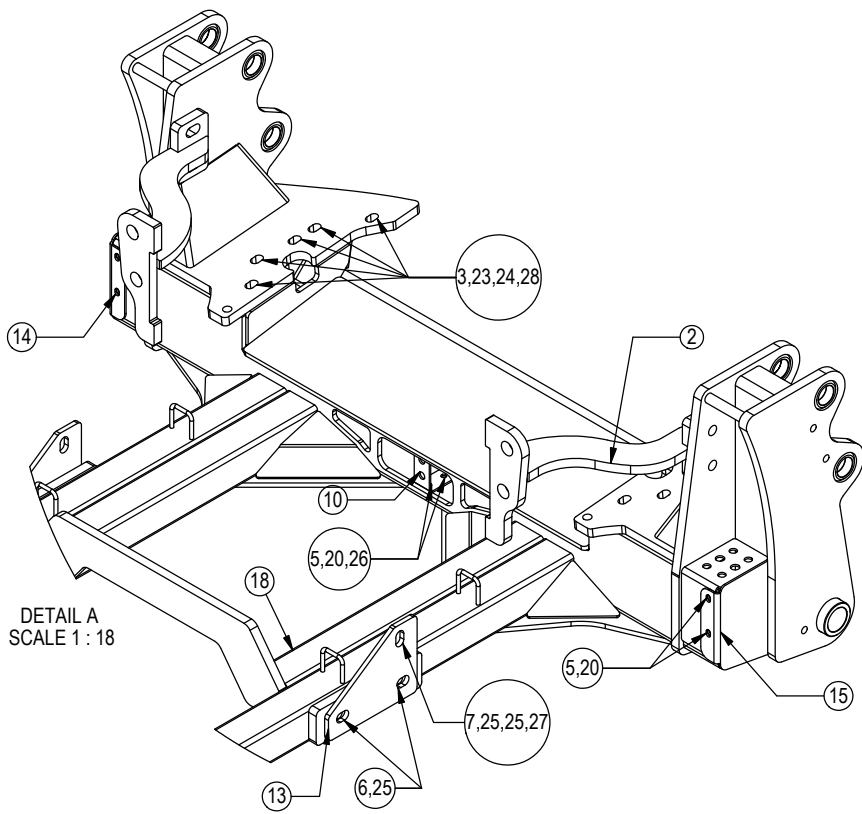
9. For each set of plates, use 2 - 1/2" x 5-1/2" bolts (PN: 16-20139) and 2 - 1/2" nuts (PN: 70-20604). If you have a 12-20 dozer, use 1/2" x 6" bolts (PN:16-20140) instead. Put the bolts in from the bottom with the nuts on the top.

10. Tighten the 1/2" nuts so the hoses are tight and don't move. If you have the nuts as far as they go and you can't get the plates tight against the hoses, use the provided 3/4" spacers (PN:53-15528) and a 1/2" washer (PN: 57-20744) between the plates and the nuts to get everything tight against the top of the drawbar.

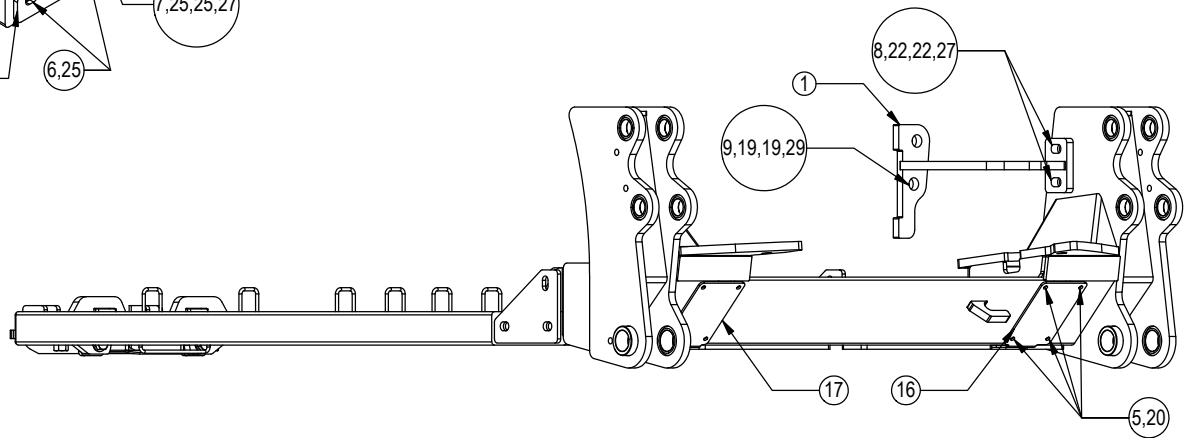
11. Make sure you still have some slack in the hoses by the pivot area so the hoses don't get pulled too tight when the tractor moves but don't make them too loose that they will get caught on any debris. Turn the tractor and oscillate the tractor to verify there is enough slack.

12. After first 8 hours of use, re-torque all bolts.

13. Check all fasteners regularly to ensure proper operation of equipment.

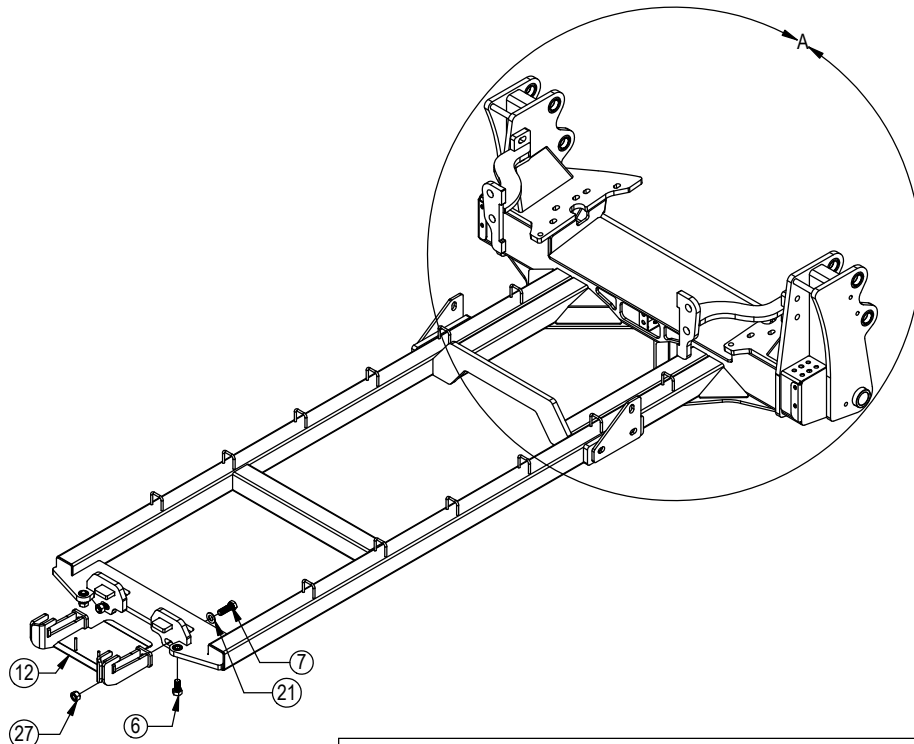


DETAIL A
SCALE 1 : 18



* Parts Not Shown

Item No.	Qty.	Part No.	Description
1	1	11-14548-R	Upper U/C Support Arm - Left
2	1	11-14548-R	Upper U/C Support Arm - Right
3	10	16-1510	20mm x 2.5mm x 90mm Metric Hex Bolt Gr 10.9
4*	1	16-2494	24mm x 3.0mm x 70mm Metric Hex Bolt Gr 10.9
5	14	16-20126	1/2" x 1-1/2" Hex Bolt Gr 5
6	6	16-20558	1" x 2" Hex Bolt Gr 8 NC
7	4	16-20562	1" x 3" Hex Bolt Gr 8
8	4	16-20564	1" x 3-1/2" Hex Bolt Gr 8
9	2	16-20896	1-1/4" x 3-1/2" Hex Bolt Gr 5
10	1	18-14551	Bulkhead Mount
11*	1	18-14570	Tow Cable Support Bracket
12	1	18-17280	Rear Hose Routing Bracket
13	2	44-14383	Large Frame Wheeled Side Plate
14	1	44-14552-L	Side Cover Plate - Left
15	1	44-14552-R	Side Cover Plate - Right
16	1	44-14553-L	Bottom Cover Plate - Left
17	1	44-14553-R	Bottom Cover Plate - Right
18	1	54-14530	Large Frame Undercarriage
19	4	57-11671	1-1/4" Flat Washer
20	14	57-20744	1/2" Flat Washer
21	2	57-20759	1" SAE Hardened Flat Washer - 2" OD
22	8	57-20819	1" Flat Washer Heavy Duty Gr 8
23	10	57-20827-10	20mm Flat Washer Thru Hardened
24	10	57-3680	2.00" OD x .75" ID x .375" Washer
25	8	57-3682	2.50" OD x 1.00" ID x .375" Washer
26	2	70-20604	1/2" Hex Center Lock Nut Gr 5
27	8	70-20599	1" Hex Nut Gr 8
28	10	70-20872-10	20mm Hex Nut Class 10
29	2	70-20981	1-1/4" Hex Nut Gr 5



TITLE:

770 Large Frame Wheeled