



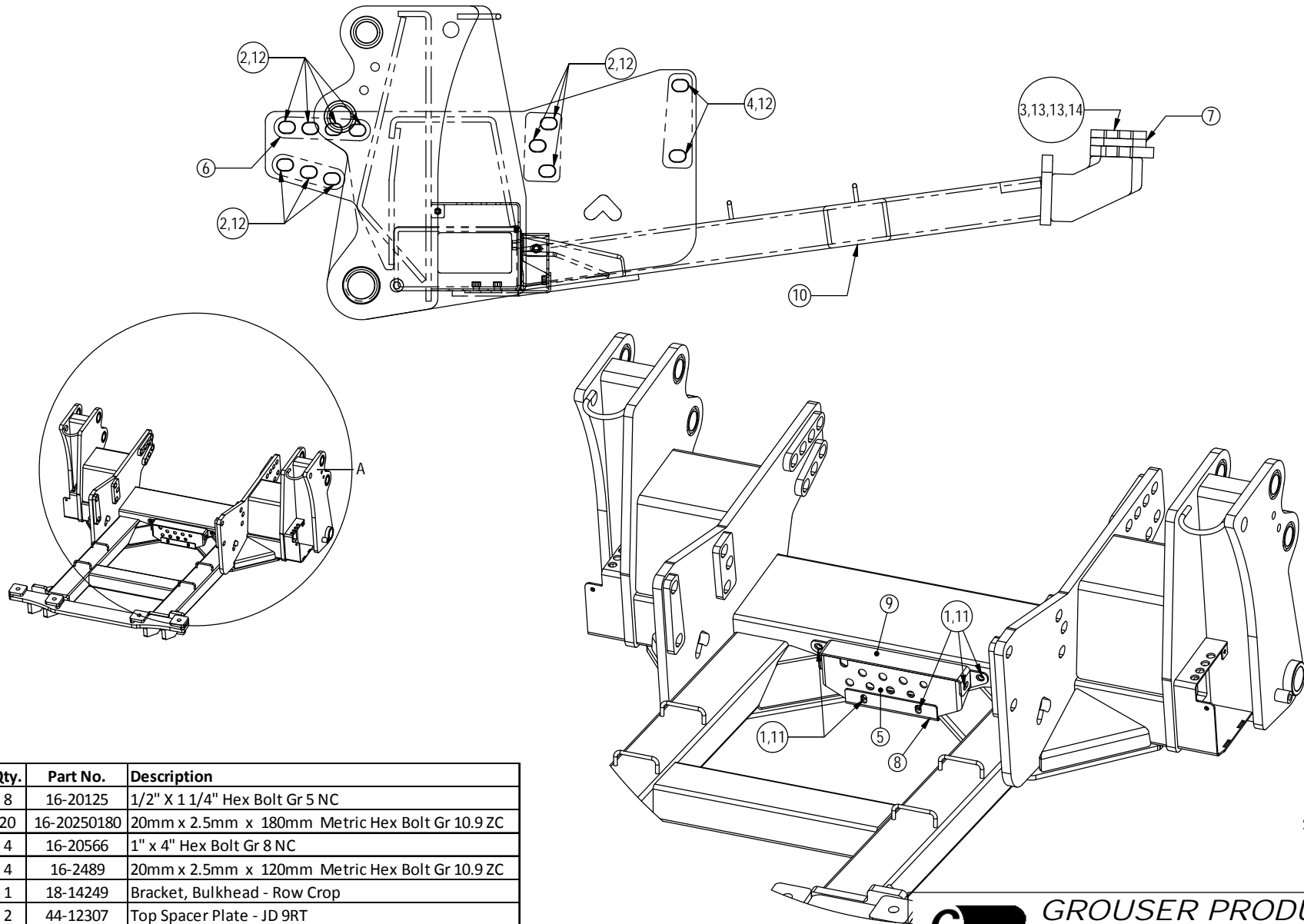
760 John Deere 9RT Series

Undercarriage Installation Instructions

Caution:

- Always use precaution when working around any equipment.
- Always wear safety glasses.
- Follow tractor manufacturer's safety guidelines when installing this product.
 1. Read all instructions prior to performing installation.
 2. If applicable, remove front weights, weight bracket, toolbox, and front axle brace from front of tractor.
 3. If the bottom covers (PN: 44-14242-R,L & 44-14306) are not factory installed, attach to U/C with 1/2" x 1-1/4" bolts (PN: 16-20125) and 1/2" flat washers (PN: 57-20744). See attached diagram for clarification.
 4. If the bulkhead bracket (PN: 18-14249) is not factory installed, attach to the U/C with 2 - 1/2" x 1-1/4" bolts (PN: 16-20125) and 1/2" flat washers (PN: 57-20744). See attached diagram for clarification. See parts book for bulkhead fittings, steel lines, and hose locations.
 5. If bulkhead covers (PN: 44-14246 & 44-14247) are not factory installed, verify that all hydraulics are installed correctly and then attach the covers to the U/C with 6 - 1/2" x 1-1/4" bolts (PN: 16-20125) and 1/2" flat washers (PN: 57-20744). See attached diagram for clarification.
 6. Remove the 24 bolts from the side of the tractor that align with the holes on the sides of the undercarriage as show on attached diagram. The front middle row of bolts remain so the frame doesn't fall.
 7. Position undercarriage (U/C) under tractor, center on the frame of the tractor. Lift U/C until holes in U/C line up with holes in the side of the tractor frame.
 8. Slide the U/C towards the rear of the tractor and lift the rear of the U/C until the U/C is firmly against the tractor frame.
 9. Install the 4 clamps (PN: 44-12319) at the rear of the U/C with a 1" bolt (PN: 16-20566), 2 - 1" flat heavy washers (PN: 57-20819), and a 1" nut (PN: 70-20599) on each bolt. See attached diagram for the proper location of the clamps. Hand tighten only.
 10. Slide the top spacer plate (PN: 44-12307) between the frame and the U/C on each side.
 11. Install the top 8- 20mm x 180mm bolts (PN: 16-20250180) with a large washer (PN: 57-3680) on each bolt in the top 8 holes of the U/C, spacer plate, and tractor frame. Hand tighten only. See attached diagram for any clarification.
 12. Install the remaining 12 - 20mm x 180mm bolts (PN: 16-20250180) with a large washer (PN: 57-3680) on each bolt into the holes of the U/C and tractor frame. Hand tighten only. See attached diagram for any clarification.
 13. Install the 4 - 20mm x 120mm bolts (PN: 16-2489) with a large washer (PN: 57-3680) on each bolt into the rear side holes of the U/C and tractor frame. Hand tighten only. See attached diagram for any clarification.
 14. Once all bolts are installed, verify that the rear of the U/C is pushed against the frame of the tractor.
 15. Torque the 1" bolts to 903 ft-lbs. and then all 20mm bolts to 432 ft-lbs.
 16. After first 8 hours of use, re-torque all bolts.
 17. Check all fasteners regularly to ensure proper operation of equipment.

THE INFORMATION CONTAINED IN THIS DRAWING IS THE SOLE PROPERTY OF GROUSER PRODUCTS INC ANY REPRODUCTION IN PART OR WHOLE WITHOUT THE WRITTEN PERMISSION OF GROUSER PRODUCTS INC IS PROHIBITED.



DETAIL A
SCALE 1 : 15

Item No.	Qty.	Part No.	Description
1	8	16-20125	1/2" X 1 1/4" Hex Bolt Gr 5 NC
2	20	16-20250180	20mm x 2.5mm x 180mm Metric Hex Bolt Gr 10.9 ZC
3	4	16-20566	1" x 4" Hex Bolt Gr 8 NC
4	4	16-2489	20mm x 2.5mm x 120mm Metric Hex Bolt Gr 10.9 ZC
5	1	18-14249	Bracket, Bulkhead - Row Crop
6	2	44-12307	Top Spacer Plate - JD 9RT
7	4	44-12319	Clamp Weld - JD 9RT
8	1	44-14246	Plate, Bottom Bulkhead Cover - Row Crop
9	1	44-14247	Plate, Top Bulkhead Cover - Row Crop
10	1	54-15670	JD 9RT UC
11	8	57-20744	1/2" Flat Washer
12	24	57-3680	2.00 OD x .75 ID x .375 HD Washer
13	8	57-20819	1" Flat Washer Heavy Duty Gr 8 (USS)
14	4	70-20599	1" Hex Nut Gr 8 NC



GROUSER PRODUCTS INC.

755 2nd Ave NW Phone 701.282.7710
West Fargo, ND 58078 Fax 701.282.8131
WWW.GROUSER.COM

TITLE: 760 - JD 9RT UC Assy.

Date: 6/21/2012

DWG. NO.: 15670-A