



760 John Deere 9R FT4 Series

Undercarriage Installation Instructions

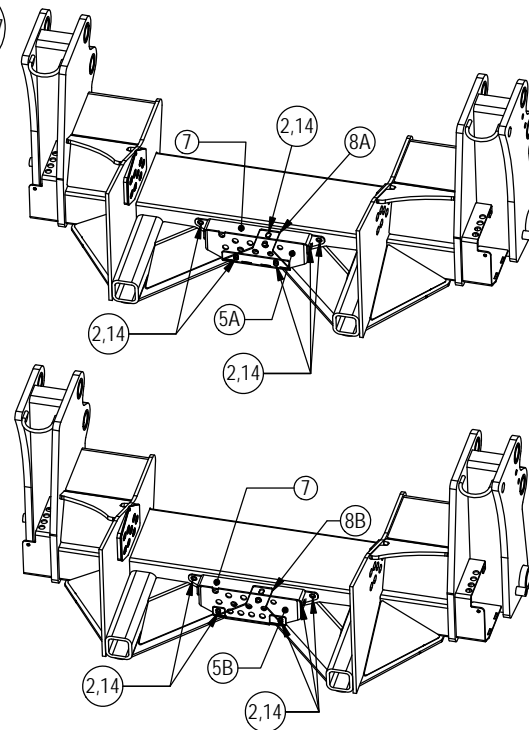
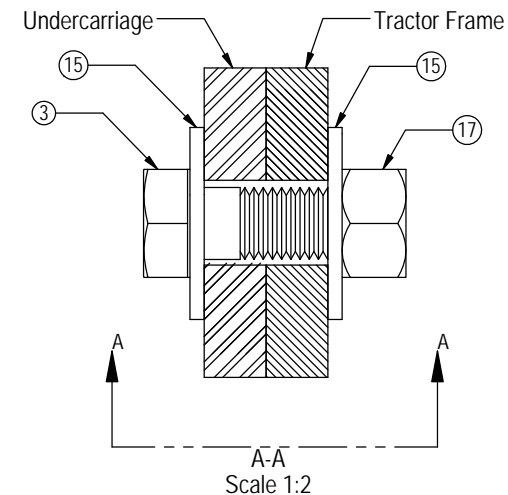
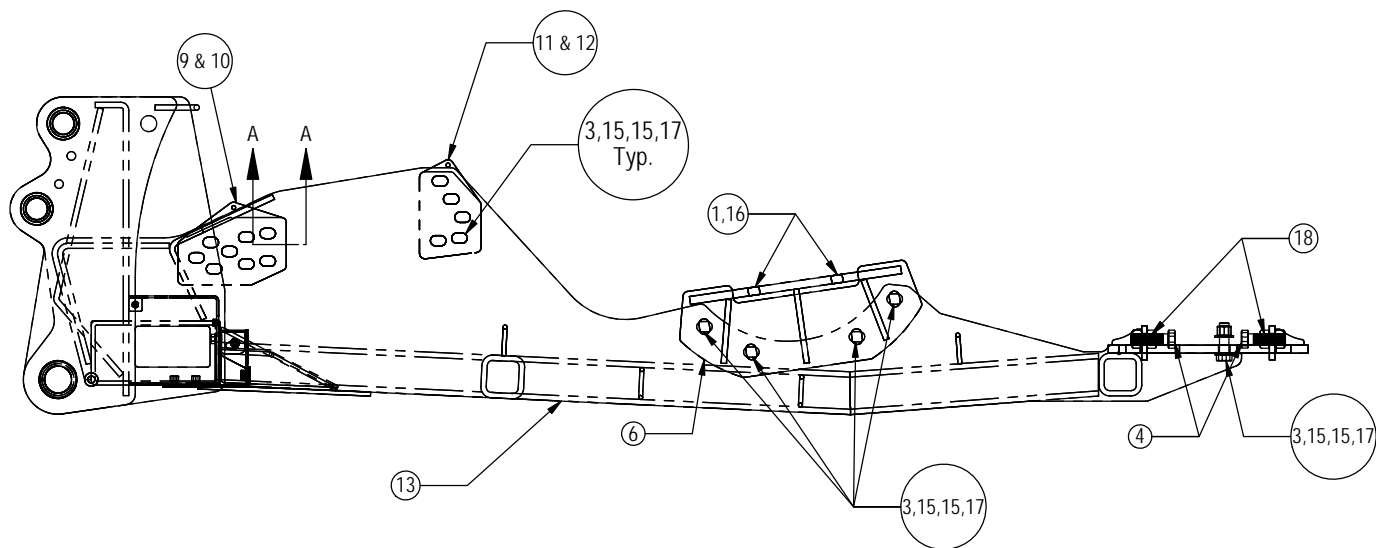
Caution:

- Always use precaution when working around any equipment.
 - Always wear safety glasses.
 - Follow tractor manufacturer's safety guidelines when installing this product.
1. Read all instructions prior to performing installation.
 2. If applicable, remove front weights, weight bracket, toolbox, and front axle brace from front of tractor.
 3. If the bulkhead bracket (PN: 18-14249 or 18-15593) is not factory installed, attach to the undercarriage (U/C) with 2 - 1/2" x 1-1/4" bolts (PN: 16-20125) and 1/2" flat washers (PN: 57-20744). Refer to parts book for bulkhead fittings, steel lines, and hose locations.
 4. If bulkhead covers (PN: 44-14247 & 44-14246 or 44-15596) are not factory installed, verify that all hydraulics are installed correctly and then attach the covers to the U/C with 6 - 1/2" x 1-1/4" bolts (PN: 16-20125) and 1/2" flat washers (PN: 57-20744).
 5. Attach the axle brackets (PN: 18-17445) to the axle with 4 - 24mm X 150mm bolts (PN: 16-1875) and 4 - axle mount washers (PN: 57-3098) into the vertical holes on each side. Finger tighten the 24mm bolts until the brackets are against the axle. Slide the brackets outward away from center of tractor to allow room to install the undercarriage.
 6. Install 4 - 1" x 4" bolts (PN: 16-20566) and 2 - 1" nuts (PN: 70-20599) on the end of the undercarriage. Turn the 1" bolts in for installation. The bolts will be adjusted after the undercarriage is installed. See the attached diagram for proper installation of the bolts and nuts.
 7. Position undercarriage under tractor, center on the frame of the tractor. Lift U/C until holes in U/C line up with holes in the side of the tractor frame.
NOTE: Add shims between the U/C and the tractor frame to reduce any gap if necessary. Use shims till there is a gap of 1/16" or less on the front shim with 8 holes. See attached diagram for the proper location and orientation of each spacer.
 8. Install 13 - 7/8" X 3" bolts (PN: 16-20542) with a 7/8" hardened flat washer (PN: 57-20758) on each bolt through the holes on each side of the U/C and the tractor frame. See attached diagram for any clarification.
 9. After all the bolts are through the tractor frame, attach with a 7/8" hardened flat washer (PN: 57-20758) and a 7/8" nut (PN: 70-20598) on each bolt.
 10. Slide the axle brackets toward the center of the tractor and attach the left and right axle brackets to the U/C with 4 - 7/8" X 3" bolts (PN: 16-20542) with a 7/8" hardened flat washer (PN: 57-20758) on each bolt.
 11. After all the bolts are through the U/C holes, attach with a 7/8" hardened flat washer (PN: 57-20758) and a 7/8" nut (PN: 70-20598) on each bolt.
 12. Attach the rear of the undercarriage vertically to the tractor frame with 2 - 7/8" x 3" bolts (PN: 16-20542), 4 - 7/8" hardened flat washers (PN: 57-20758), and 2 - 7/8" nuts (PN: 70-20598).
 13. Verify that all bolts are tight and spacers are used where needed between the tractor frame and undercarriage.
 14. Torque 7/8" bolts on one side of the undercarriage to 600 ft-lbs. Add shims on opposite side of undercarriage if needed to insure a gap of 1/16" or less.

15. Torque the 24mm bolts to 909 ft-lbs., torque the 7/8" bolts on the axle bracket to 600 ft-lbs. and then torque the remaining 7/8" bolts to 600 ft-lbs.
16. Unscrew the two 1" x 3" bolts at the rear of the undercarriage until they are tight against the tractor frame. Torque the 1" bolts to 90-95 ft-lbs.
17. Tighten the nuts up tight against the undercarriage. Use the nuts to lock the bolts in place.
18. After first 8 hours of use, re-torque all bolts.
19. Check all fasteners regularly to ensure proper operation of equipment.

Note: See Assembling Lift Components Section of the 760 Owner's Manual and Parts Book for instructions on how to assemble the lift system to the undercarriage.

THE INFORMATION CONTAINED IN THIS DRAWING IS THE SOLE PROPERTY OF GROUSER PRODUCTS INC ANY REPRODUCTION IN PART OR WHOLE WITHOUT THE WRITTEN PERMISSION OF GROUSER PRODUCTS INC IS PROHIBITED.



Item #A for Ag Pro 760
Item #B for Ag Pro 12-20

Note: Install all bolts before tightening.

Item No.	Qty.	Part No.	Description
1	8	16-1875	24mm x 3.0mm x 150mm Metric Hex Bolt Gr. 10.9
2	8	16-20125	1/2" x 1-1/4" Hex Bolt Gr 5 NC
3	36	16-20542	7/8" x 3" Hex Bolt Gr 8 NC
4	4	16-20566	1" X 4" Hex Bolt Gr 8 NC
5A	1	18-14249	Bracket, Bulkhead - 760 AG Pro
5B	1	18-15593	Bracket, Bulkhead - 760 AG Pro 12-20
6	2	18-17445	760 JD 9R FT4 Axle Bracket
7	1	44-14247	Plate, Top Bulkhead Cover - 760 Ag Pro
8A	1	44-14246	Plate, Bottom Bulkhead Cover - 760 Ag Pro
8B	1	44-15596	Plate, Bottom Bulkhead Cover - 760 AG Pro 12-20
9	2	44-17448	760 - JD 9R FT4 - Shim Plate - Front Thin (Flame Cut)
10	2	44-17449	760 - JD 9R FT4 - Shim Plate - Front Thick (Flame Cut)
11	2	44-17450	760 - JD 9R FT4 - Shim Plate - Rear Thin (Flame Cut)
12	2	44-17451	760 - JD 9R FT4 - Shim Plate - Rear Thick (Flame Cut)
13	1	54-17430	760 JD 9R FT4 Undercarriage
14	8	57-20744	1/2" Flat Washer
15	72	57-20758	7/8" SAE Hardened Flat Washer - 1-3/4" OD
16	8	57-3098	2.50" O.D. x 1.05" I.D. x .50" Washer CZ Plated (JD Axle Washer)
17	36	70-20598	7/8" Nex Nut Gr 8 NC
18	4	70-20599	1" Hex Nut Gr 8 NC



GROUSER PRODUCTS INC.

755 2nd Ave NW Phone 701.282.7710
West Fargo, ND 58078 Fax 701.282.8131
WWW.GROUSER.COM

TITLE: 760 JD 9R FT4 Series UC Assy.

Date: 9/25/2013

DWG. NO.: 17430-A