



Claas Xerion 5000

Undercarriage Installation Instructions

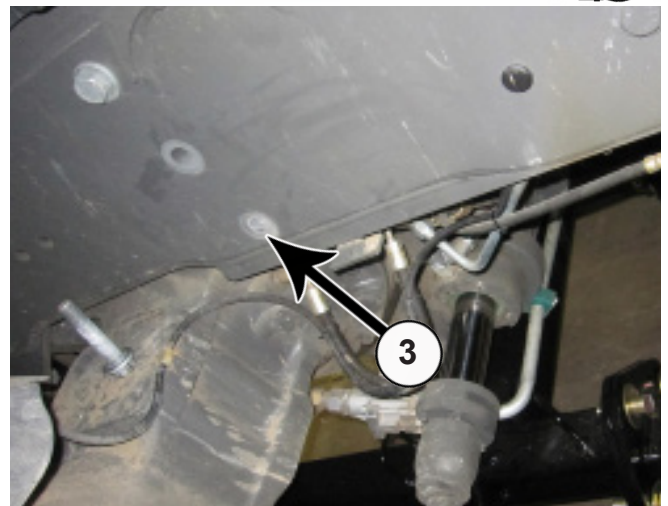
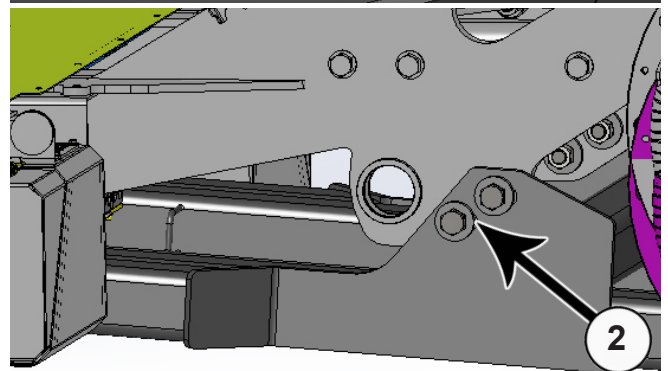
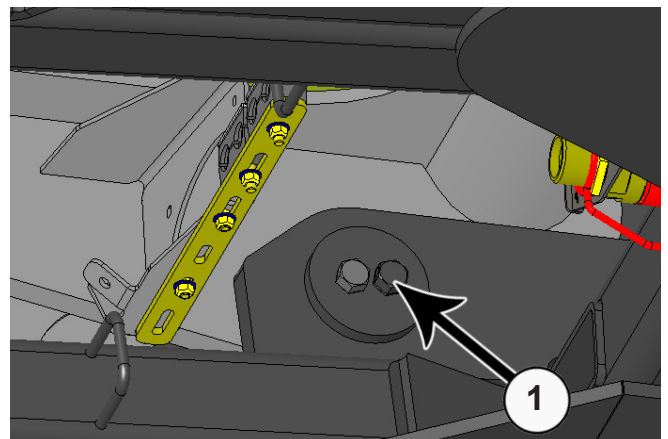
Caution:

- Always use precaution when working around any equipment.
- Always wear safety glasses.
- Follow tractor manufacturer's safety guidelines when installing this product.

1. Read all instructions prior to performing installation.
2. Remove the brackets from undercarriage.
3. In front of the front axle, you'll need to remove 2 bolts from each side of the tractor. See Image 2 for location.
4. Behind the front axle, you'll need to remove the bottom 2 bolts from each side of the tractor. You will reuse washers from each bolt and the nuts from the bottom bolt on each side. See Image 3.
5. Position undercarriage under tractor, center on the frame of the tractor. Lift undercarriage until holes in undercarriage line up with holes in the side of the tractor frame.

NOTE: When installing hardware, only finger tighten until all hardware is in place.

6. Insert the Claas pin (PN: 43-18531) into the front side of the undercarriage and into the frame of the tractor. The bolts will need to be inserted from the inside. Hold the pin in place by using 2 - 5/8" x 6" bolts (PN: 16-20200), 2 clamp plates (PN: 44-18003) and 2 - 5/8" nuts (PN: 70-20646) on each side. See attached diagram for clarification (1)
7. In front of the front axle, insert a 7/8" x 3-1/2" bolt (PN: 16-20544) with a 7/8" heavy washer (PN: 57-3681) into each slot of the undercarriage and into the tractor frame on each side. Then on the inside attach with a 7/8" heavy washer (PN: 57-3681) and a 7/8" nut (PN: 70-20598) (2).
8. Behind the front axle, attach the side brackets to the tractor with 2 - 20mm x 110mm bolt (PN: 16-20150110) and a washer that was removed in Step #4 on each bolt. Then on the inside attach with another washer and a nut that was removed in Step #4 on the bottom bolt on each side (3)
9. Install 2 - 1" x 3 bolts (PN: 16-20562) in the threaded boxes on the rear undercarriage weldment. The bolt heads need to be towards the back. Refer to attached diagram for further clarification. Turn the bolts in for installation. The bolts will be adjusted in a later step.
10. Put the rear brackets (PN: 18-17996-R,L) on the rear undercarriage weldment (PN: 54-17990). Refer to attach diagram for proper orientation of the brackets and the rear undercarriage weldment.
11. Position the rear undercarriage weldment under the tractor and center it with the frame of the tractor.
12. In front of the rear axle there is a plate on each side that has 8 bolts. Remove the front two bolts on each side.



13. Raise the rear undercarriage weldment up and line up with the open tractor frame holes. The rear bracket plate needs to fit between the tractor frame plates and the round part of the bracket will fit around the round part of the tractor frame plate.

14. Attach the rear weldment to the tractor holes that you took bolts out of in Step #12. Use 24mm x 100mm bolts (PN: 16-2486) with the washers that were removed in Step #12 and 24mm nuts (PN: 70-20874) (4).

15. Attach the side brackets to the front and the rear undercarriage weldments with 1" x 3" bolts (PN: 16-20562) and a 1" flat washer on each bolt (PN: 57-20749). Once all the bolts are through the holes, attach with a 1" flat washer and a 1" nut" (PN: 70-20599) on each bolt.

16. Attach the front top bracket to the front of the undercarriage with 4 - 3/4" x 2-1/2" bolts (PN: 16-20220), 8 - 3/4" hardened flat washers (PN: 57-20757) and 4 - 3/4" nuts (PN: 70-20587) (5).

17. Attach the front top bracket to the tractor with a 1-1/4" x 3-1/2" bolt (PN: 16-20896) and a 1-1/4" flat washer (PN: 57-11671) on each side of the bracket. The bolts need to be staggered so one needs to go in the top and the other in the bottom. Finish by attaching with a 1-1/4" nut (PN: 70-20981) on each bolt.

18. Torque the 5/8" bolts to 154 ft-lbs.

19. Torque the 7/8" bolts to 600 ft-lbs.

20. Torque the 20mm bolts to 432 ft-lbs.

21. Torque the 1" bolts that attach the side brackets to the undercarriage weldments to 903 ft-lbs.

22. Torque the 24mm bolts to 909 ft-lbs.

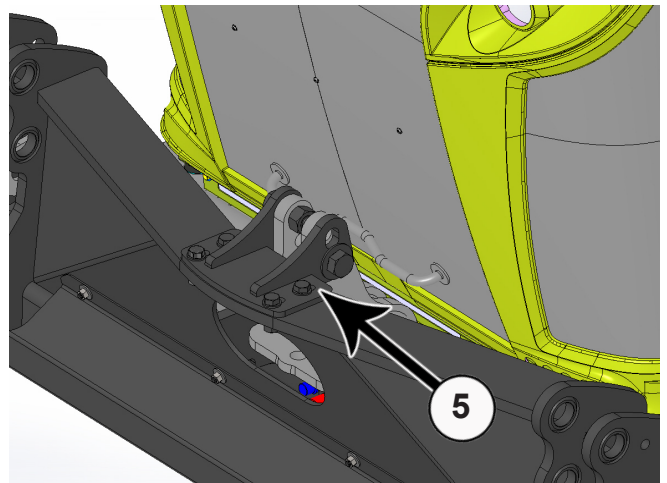
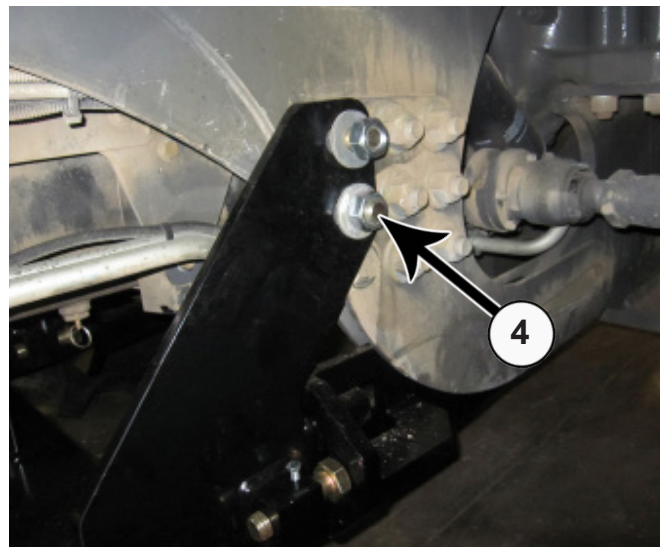
23. Torque the front 1-1/4" bolts to 1,105 ft-lbs. and the 3/4" bolts to 380 ft-lbs.

24. Evenly unscrew the 1" bolts at the back of the undercarriage until they are tight up against the rear brackets. Torque the 1" bolts to 200 ft-lbs.

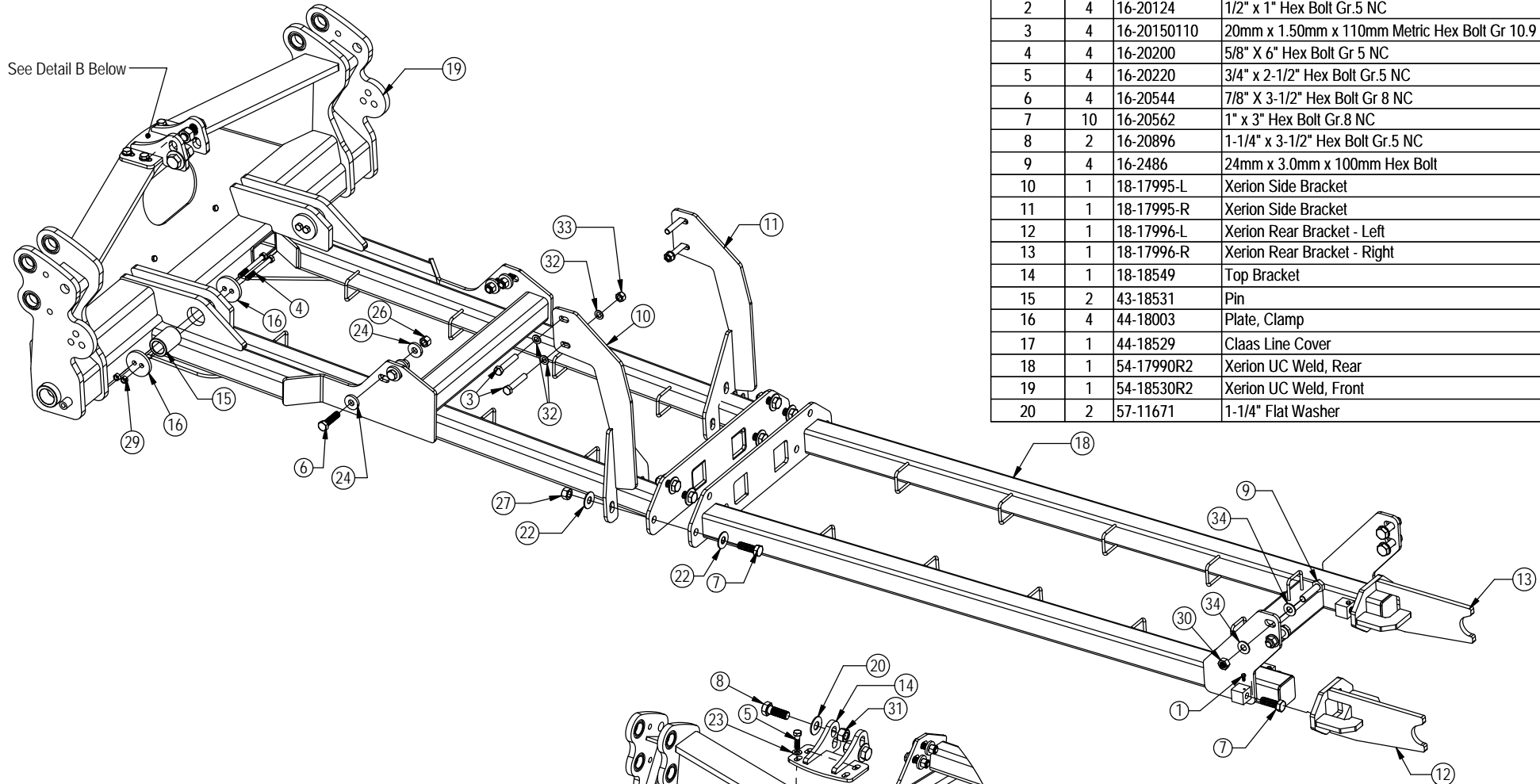
25. Install a 5/16" x 3/4" bolt (PN: 16-20032) into each block at the rear of the undercarriage to hold the 1" x 3" bolt in place. Torque the 5/16" bolts to 19 ft-lbs.

26. After first 8 hours of use, re-torque all bolts.

27. Check all fasteners regularly to ensure proper operation of equipment.

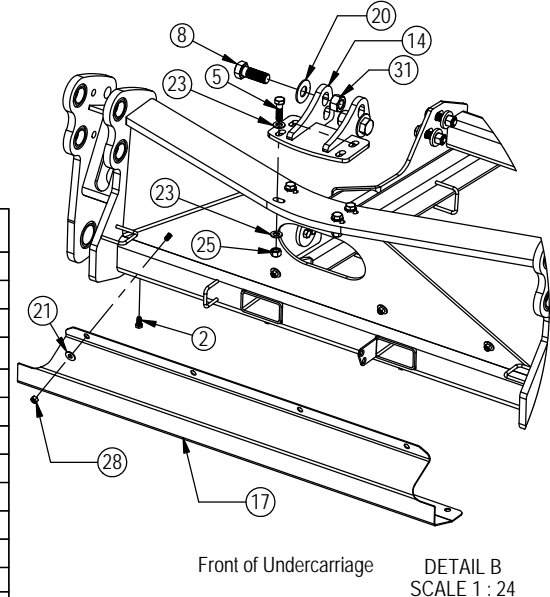


THE INFORMATION CONTAINED IN THIS DRAWING IS THE SOLE PROPERTY OF GROUSER PRODUCTS INC ANY REPRODUCTION IN PART OR WHOLE WITHOUT THE WRITTEN PERMISSION OF GROUSER PRODUCTS INC IS PROHIBITED.




ITEM NO.	QTY.	PART NO.	DESCRIPTION
1	4	16-20032	5/16" X 3/4 " Hex Bolt Gr 5 NC
2	4	16-20124	1/2" x 1" Hex Bolt Gr.5 NC
3	4	16-20150110	20mm x 1.50mm x 110mm Metric Hex Bolt Gr 10.9 Fine
4	4	16-20200	5/8" X 6" Hex Bolt Gr 5 NC
5	4	16-20220	3/4" x 2-1/2" Hex Bolt Gr.5 NC
6	4	16-20544	7/8" X 3-1/2" Hex Bolt Gr 8 NC
7	10	16-20562	1" x 3" Hex Bolt Gr.8 NC
8	2	16-20896	1-1/4" x 3-1/2" Hex Bolt Gr.5 NC
9	4	16-2486	24mm x 3.0mm x 100mm Hex Bolt
10	1	18-17995-L	Xerion Side Bracket
11	1	18-17995-R	Xerion Side Bracket
12	1	18-17996-L	Xerion Rear Bracket - Left
13	1	18-17996-R	Xerion Rear Bracket - Right
14	1	18-18549	Top Bracket
15	2	43-18531	Pin
16	4	44-18003	Plate, Clamp
17	1	44-18529	Claas Line Cover
18	1	54-17990R2	Xerion UC Weld, Rear
19	1	54-18530R2	Xerion UC Weld, Front
20	2	57-11671	1-1/4" Flat Washer

ITEM NO.	QTY.	PART NO.	DESCRIPTION
21	4	57-20744	1/2" Flat Washer
22	12	57-20749	1.00" Flat Washer-2" OD
23	8	57-20757	3/4" SAE Flat Washer - 1-1/2" OD
24	8	57-3681	2.25" OD x .875 ID x .375" HD Washer
25	4	70-20587	3/4" Hex Nut Gr.5 NC
26	4	70-20598	7/8" Hex Nut Gr 8 NC
27	6	70-20599	1" Hex Nut Gr 8 NC
28	4	70-20604	1/2" Center Lock Hex Nut
29	4	70-20646	5/8" Hex Top Lock Nut Gr 5 NC
30	4	70-20874	24mm Hex Nut 3.0 Pitch CL 8
31	2	70-20981	1-1/4" Hex Nut Gr 5 NC
32	6		20mm Flat Washer - Use original tractor washer
33	2		20mm Hex Nut 2.5 Pitch - Use original tractor nut
34	8		24mm Flat Washer - Use original tractor washer



Front of Undercarriage
DETAIL B
SCALE 1 : 24



GROUSER PRODUCTS INC.

755 2nd Ave NW Phone 701.282.7710
 West Fargo, ND 58078 Fax 701.282.8131
WWW.GROUSER.COM

TITLE: **Claas**

Date: 2-12-2015 DWG. NO.: 18530-A