



Versatile 350-550

Undercarriage Installation Instructions

Caution:

- Always use precaution when working around any equipment.
- Always wear safety glasses.
- Follow tractor manufacturer's safety guidelines when installing this product.
 1. Read all instructions prior to installation.

2. Remove existing toolboxes, front weights, and tow cable holder if equipped. Tow cable holder can be reinstalled later with the undercarriage.
3. Attach the rear brackets (PN: 18-15945-R,L) to the rear of the undercarriage with 8 - 3/4" x 2" bolts (PN: 16-20218), 16 - 3/4" washers (PN: 57-20757), and 8 - 3/4" nuts (PN: 70-20607). See notes below and diagram for further clarification on the orientation of the brackets.

Note: For tractor models 450-550, put the left bracket (long plate against undercarriage) on the left side of the undercarriage and the right bracket on the right side.

Note: For tractor models 350-400, put the right bracket (short plate against undercarriage) on the left side of the undercarriage and the left bracket on the right side.

4. Position the undercarriage (U/C) under tractor and center on the frame of the tractor.
5. Lift the rear of the undercarriage up and attach the rear brackets to the frame of the tractor with a 20mm x 70mm bolt (PN: 16-1876), 2 - heavy duty washers (PN: 57-3680), and a 20mm nut (PN: 70-20872-10) on each side.
6. Lift the front of the undercarriage up till the holes line up with the holes on the tractor.

Note: Add shims between the U/C and the tractor frame on each side to reduce any gap if necessary. Use shims till there is a gap of 1/16" or less. See attached diagram for the proper location and orientation of each shim.
7. Insert a 20mm x 70mm bolt (PN: 16-1876) with a heavy duty washer (PN: 57-3680) into each of the side holes of the undercarriage and tractor frame.
8. After all bolts are through the tractor frame and U/C, attach with a 3/4" hardened washer (PN: 57-20757) and a 20mm nut (PN: 70-20872-10).
9. At the center of the undercarriage, insert a 20mm x 70mm bolts (PN: 16-1876) and a hardened washer (PN: 57-20757) into each of the front 6 vertical holes of the undercarriage and tractor frame. Bolt has to be inserted from the bottom.

Note: If the tow cable bracket was equipped, reinstall the bracket when installing the front 6 vertical bolts. See Page 3 for more hardware and installation information.

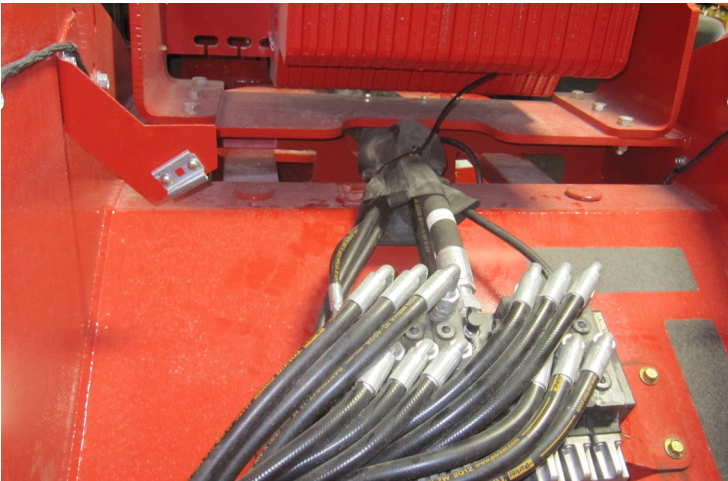
10. Once the bolts are thru the undercarriage and tractor frame, attach with a hardened washer (PN: 57-20757) and a 20mm nut (PN: 70-20872-10).
11. Push the undercarriage back till the rear brackets are pushed up against the tractor frame.
12. Once all bolts have been installed, torque the rear 20mm bolts to 432 ft-lbs., the 3/4" bolts to 257 ft-lbs., the vertical 20mm bolts to 432 ft-lbs., and then the side 20mm bolts to 432 ft-lbs.
13. Attach the front cover (PN: 44-18611) to the front of the undercarriage with 4 - 1/2" washers (PN: 57-20744) and 4 - 1/2" nuts (PN: 70-20604). Torque the 1/2" nuts to 75 ft-lbs.
14. After first 8 hours of use, re-torque all bolts.
15. Check all fasteners regularly to ensure proper operation of equipment.

NOTE: Installer is responsible to route hoses in a practical manner. The hoses need to be routed away from sharp corners and moving parts and need to be secure. Refer to Page 2 for some hose routing pictures. Install all hoses when assembling the lift system in the Owner's Manual and Parts Book.

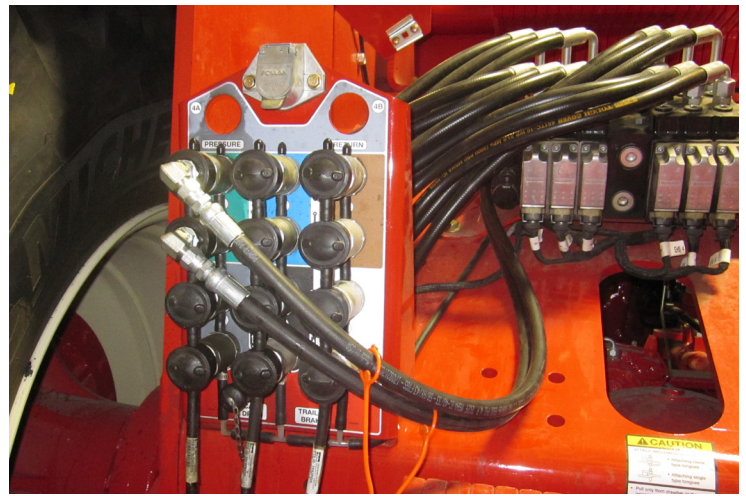
Hose Routing Pictures



1. Route Hoses in the same location as the tractor's hoses. Replace zip ties if you run the hoses in the the tractor's original hose cordura.

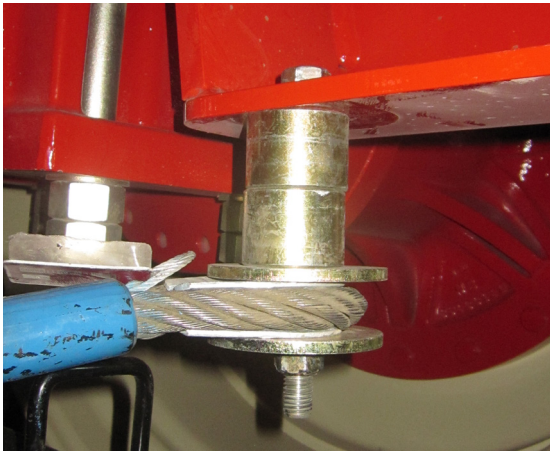


2. Exit the frame at the center of the rear frame as shown in the picture.

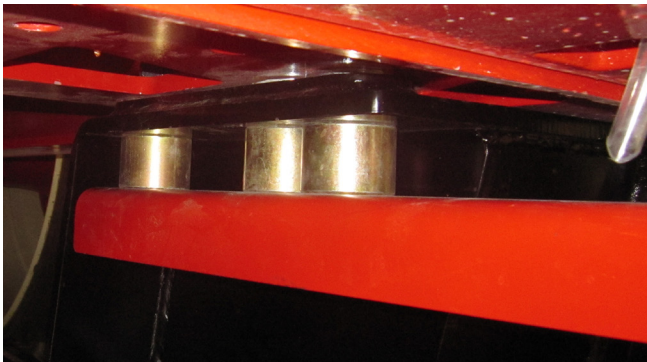


3. After installing the male couplers, plug each set into a set of rear SCV's

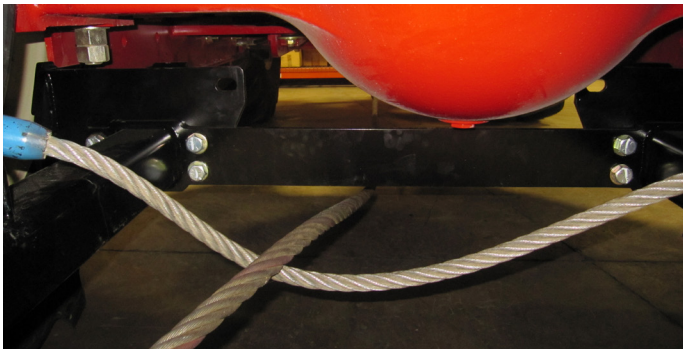
Tow Cable Installation



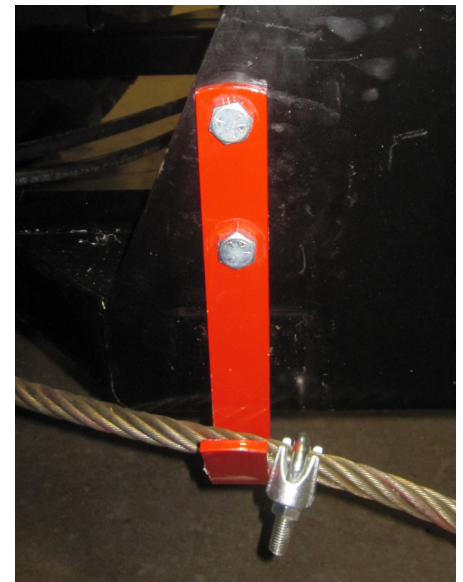
1. Add 2 spacers in between the cable holder and the tractor frame by the front tires. Use a 5/8" x 6" bolt (PN: 16-20200), 2 - 5/8" washers (PN: 57-20746) and a 5/8" top lock nut (PN: 70-20646) on each side.



2. Install the front cable support bracket at the front of the undercarriage. Install with 3 spacers on each side in between the undercarriage and the bracket. Use 3 - 20mm x 120mm (PN: 16-2489) to install the bracket and undercarriage. Use the same washers and nuts that were used in the mounting instructions on Pages 1.



3. Route the cable underneath the undercarriage, then over the cable support and under the undercarriage on the right side.



4. Install the original bracket to the side of the undercarriage with 2 - 3/4" x 2" bolts (PN: 16-20218) and 2 - 3/4" nuts (PN: 70-20607). Cable clamp is installed in Step #6.

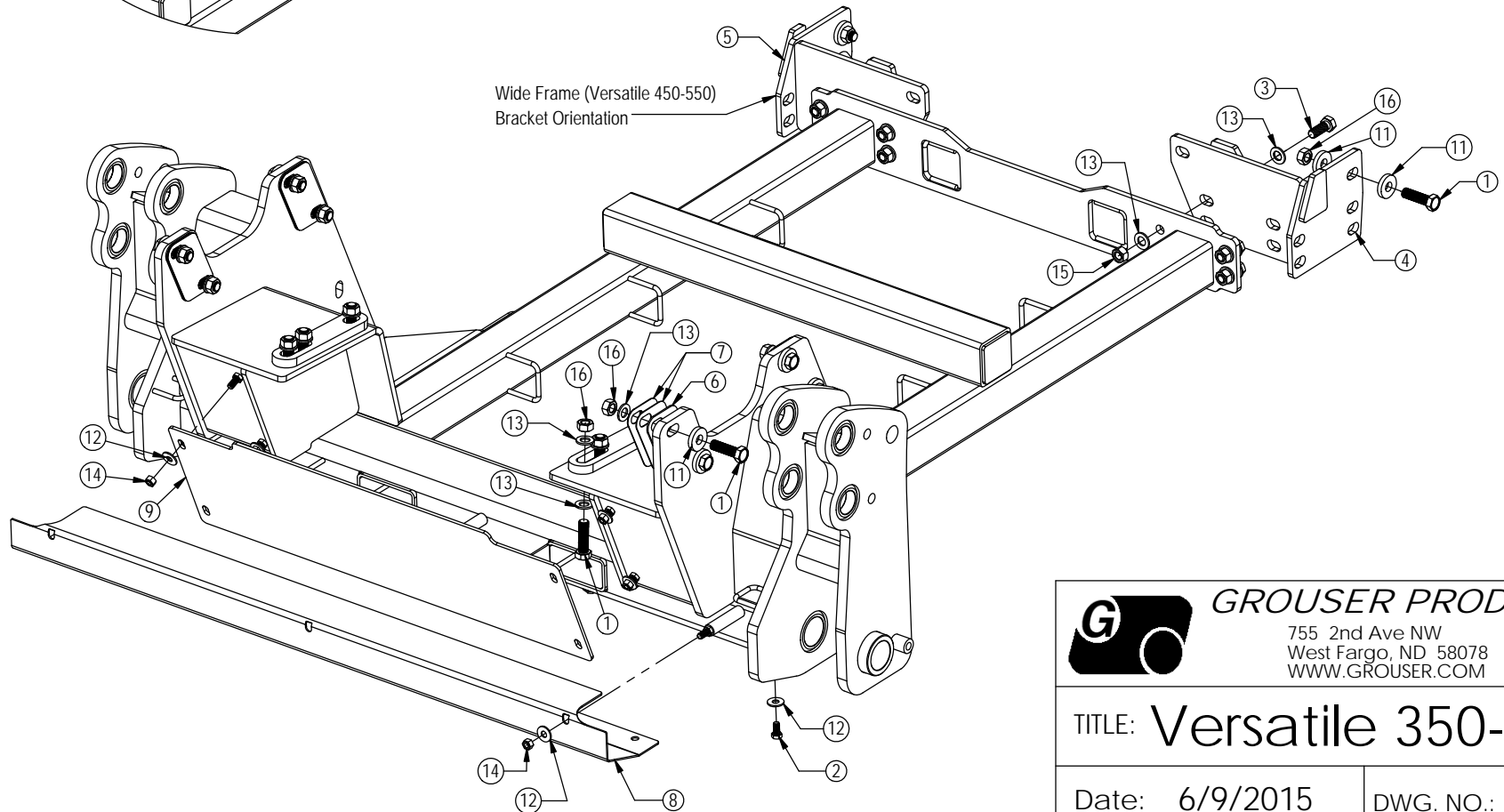
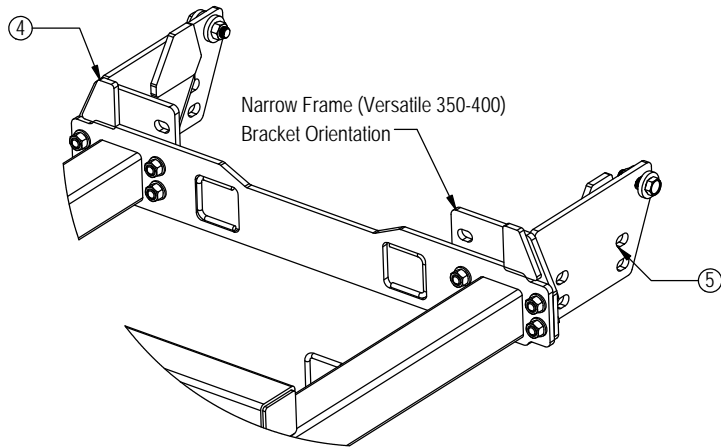


5. Finish routing the cable under the lift frame and up over the cable bracket. Attach to the bracket with the original hardware.

6. Pull the cable so there is some slack at the front under the lift frame as shown in the picture above. Then put a cable clamp up by the side bracket as shown in the picture from Step #4 to keep the cable in place.

THE INFORMATION CONTAINED IN THIS DRAWING IS THE SOLE PROPERTY OF GROUSER PRODUCTS INC ANY REPRODUCTION IN PART OR WHOLE WITHOUT THE WRITTEN PERMISSION OF GROUSER PRODUCTS INC IS PROHIBITED.

Note: Narrow frame uses the left rear bracket on the right side of the undercarriage and the right bracket on the left side of the undercarriage as shown in the diagram below.



ITEM NO.	PART NO.	Wide Frame/QT.Y.	Narrow Frame/QT.Y.	DESCRIPTION
1	16-1876	16	16	20mm x 2.5mm x 70mm Gr. 10.9 Hex Bolt
2	16-20124	4	4	1/2" x 1" Hex Bolt Gr.5 NC
3	16-20218	8	8	3/4" X 2" Hex Bolt Gr.5 NC
4	18-15945-L	1	1	Adapter Bracket
5	18-15945-R	1	1	Adapter Bracket
6	44-15966	4	4	Versatile T4 Shim Plate (.125")
7	44-15967	8	8	Versatile T4 Shim Plate (.06")
8	44-18046R2	1	1	Line Cover
9	44-18611	1	1	Plate, Cover
10	54-18600	1	1	Undercarriage Weld, Ag Pro +
11	57-3680	12	12	3/4" ID x 2.00 OD x .375" Heavy Washer
12	57-20744	11	11	1/2" Flat Washer
13	57-20757	36	36	3/4" Flat Washer - 1-1/2" OD
14	70-20604	7	7	1/2" Center Lock Hex Nut
15	70-20607	8	8	3/4" Hex Center Lock Nut NC
16	70-20872-10	16	16	20mm Hex Nut 2.5 Pitch Class 10 Zinc



GROUSER PRODUCTS INC.

755 2nd Ave NW Phone 701.282.7710
 West Fargo, ND 58078 Fax 701.282.8131
 WWW.GROUSER.COM

TITLE: Versatile 350-550

Date: 6/9/2015

DWG. NO.: 18600-A