



John Deere 9000 Series

Undercarriage Installation Instructions

Caution:

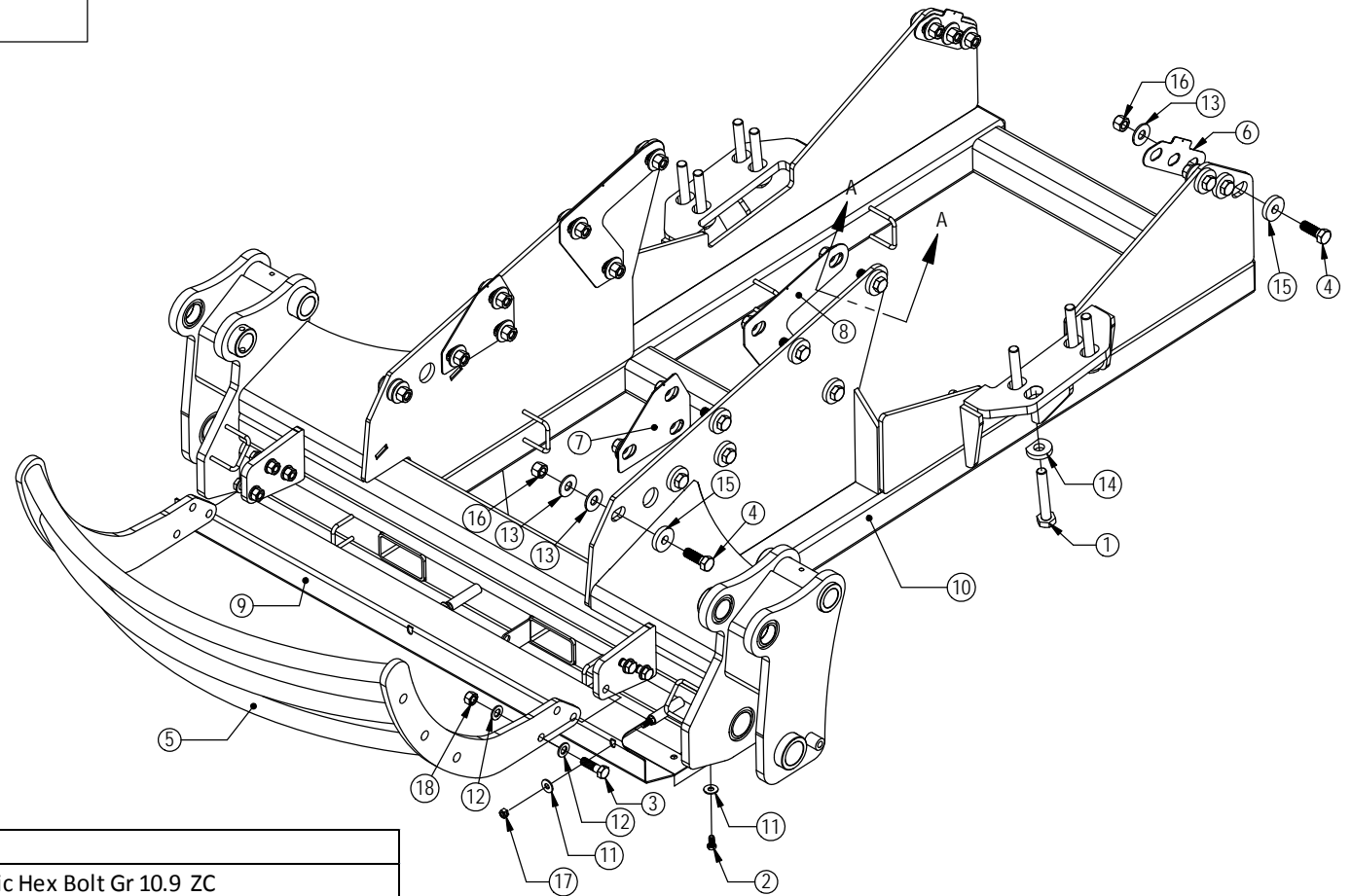
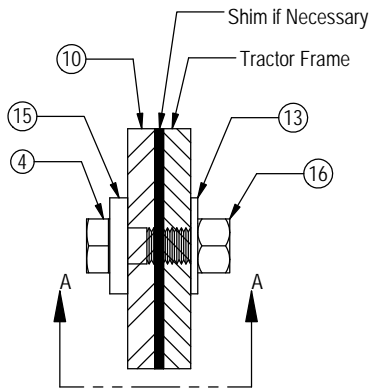
- Always use precaution when working around any equipment.
- Always wear safety glasses.
- Follow tractor manufacturer's safety guidelines when installing this product.

1. Read all instructions prior to performing installation.
2. If applicable, remove front weights, weight bracket, toolbox, and front axle brace from front of tractor.
3. If necessary, drill out front two holes on each side frame rail on tractor for 7/8" diameter bolts. See attached diagram for any clarification.
4. Position undercarriage (U/C) under tractor, center on the frame of the tractor. Lift U/C until holes in U/C line up with holes in side frame rail.

NOTE: Add shims between the U/C and the tractor frame to reduce any gap if necessary. Use shims till there is a gap of 1/16" or less on the front. For the first hole on each side, use a 7/8" Flat washer as a shim if necessary. See attached diagram for the proper location and orientation of each shim plate.

5. Install 20 - 7/8" X 2-1/2" bolts (PN: 16-20540) with oversized washers (PN: 57-8836) through front 14 holes and back 6 holes.
6. After all bolts are thru the undercarriage and tractor frame, attach with a 7/8" washer (PN: 57-20818) and a 7/8" nut (PN: 57-20598) on each bolt. Hand tighten only. See section A-A on attached diagram for clarification.
7. Install 8 - 24mm X 150mm bolts (PN: 16-1875) with axle mount washers (PN: 57-3098) into vertical holes on axle. Flat sides of washers should meet for proper clearance.
8. Torque down all 7/8" diameter bolts to 600 ft-lbs and all 24mm bolts to 909 ft-lbs.
9. Attach the grill guard (PN: 18-18059) to the front of the undercarriage with 3 - 3/4" x 2-1/2" bolts (PN: 16-20220), 6 - 3/4" Flat washers (PN: 57-20757), and 3 - 3/4" center lock nuts (PN: 70-20607) on each side.
10. Torque the 3/4" bolts to 257 ft-lbs.
11. After first 8 hours of use, re-torque all bolts.
12. Check all fasteners regularly to ensure proper operation of equipment.

THE INFORMATION CONTAINED IN THIS DRAWING IS THE SOLE PROPERTY OF GROUSER PRODUCTS INC ANY REPRODUCTION IN PART OR WHOLE WITHOUT THE WRITTEN PERMISSION OF GROUSER PRODUCTS INC IS PROHIBITED.



Item No.	Qty.	Part No.	Description
1	8	16-1875	24mm x 3.0mm x 150mm Metric Hex Bolt Gr 10.9 ZC
2	4	16-20124	1/2" X 1" Hex Bolt Gr 5 NC
3	6	16-20220	3/4" X 2-1/2" Hex Bolt Gr 5 NC
4	20	16-20540	7/8" X 2-1/2" Hex Bolt Gr 8 NC
5	1	18-18059	Ag Pro Plus - Grill Guard
6	2	44-11849	450, 660 & 760 - JD 9000, 9030 & 9R - Shim Plate - Rear (Yellow ZC)
7	2	44-17748	450 - JD 9000 - Shim Plate - Front (Flame Cut) (Yellow ZC)
8	2	44-17749	450 - JD 9000 - Shim Plate - Middle (Flame Cut) (Yellow ZC)
9	1	44-18046	Ag Pro Plus - Front Hose Cover
10	1	54-19140	Ag Pro Plus - JD 9000, 9020 Undercarriage Weld
11	7	57-20744	1/2" Flat Washer
12	12	57-20757	3/4" SAE Hardened Flat Washer - 1-1/2" OD
13	22	57-20818	7/8" Flat Washer Heavy Duty Gr 8 (USS)
14	8	57-3098	2.50 O.D. x 1.05 I.D. x .50" Washer CZ Plated(JD Axle Washer)
15	20	57-8836	2.50 O.D. x .875 I.D. x .50 Thick CZ Plated
16	20	70-20598	7/8" Hex Nut Gr 8 NC
17	3	70-20604	1/2" Hex Center Lock Nut Gr 2 NC
18	6	70-20607	3/4" Hex Center Lock Nut Gr 2 NC



GROUSER PRODUCTS INC.

755 2nd Ave NW Phone 701.282.7710
West Fargo, ND 58078 Fax 701.282.8131
WWW.GROUSER.COM

TITLE: Ag Pro Plus - JD 9000

Date: 9/29/2015

DWG. NO.: 19140-A