



FH-400 John Deere 7000 - Small Frame

Undercarriage Installation Instructions

Caution:

- Always use precaution when working around any equipment.
- Always wear safety glasses.
- Follow tractor manufacturer's safety guidelines when installing this product.
 1. Read all instructions prior to installation.
 2. Remove weights and weight bracket from front of tractor if necessary.
 3. Position the undercarriage (U/C) under the tractor and center with the frame of the tractor.
 4. Lift the U/C until the holes on the U/C line up with the front weight bracket mounting holes.
 5. At the front of the tractor, use 4 - 20mm x 70mm bolts (PN: 16-1876) with a large 3/4" washer (PN: 57-3680) on each bolt to attach the U/C to the front of the tractor. See attached diagram for clarification.
 6. Attach the right rail (PN: 46-3668) to the right side of the tractor frame with 2 - 3/4" x 2-1/2" bolts (PN: 16-20220), 2 - 3/4" ID washers (PN: 57-3680), 2 - 3/4" flat washers (PN: 57-20747), and 2 - 3/4" nuts (PN: 70-20607) in the top rear holes on the rail. In the bottom 2 holes, use 2 - 20mm bolts (PN: 16-1876) with a 3/4" ID washer on each bolt. See attached diagram for clarification.
 7. Attach the left rail (PN: 46-3667) to the left side of the tractor frame with 2 - 3/4" x 2-1/2" bolts (PN: 16-20220), 2 - 3/4" ID washers (PN: 57-3680), 2 - 3/4" flat washers (PN: 57-20747), and 2 - 3/4" nuts (PN: 70-20607) in the top rear holes on the rail. In the bottom 2 holes, use 2 - 20mm bolts (PN: 16-1876) with a 3/4" ID washer on each bolt. See attached diagram for clarification.
 8. Attach the left and right side rails to the sides of the U/C with 3 - 1" bolts (PN: 16-20560), 6 - 1" heavy duty flat washers (PN: 57-20819), and 3 - 1" nuts (PN: 70-20599) for each side. See attached diagram
 9. for clarification.

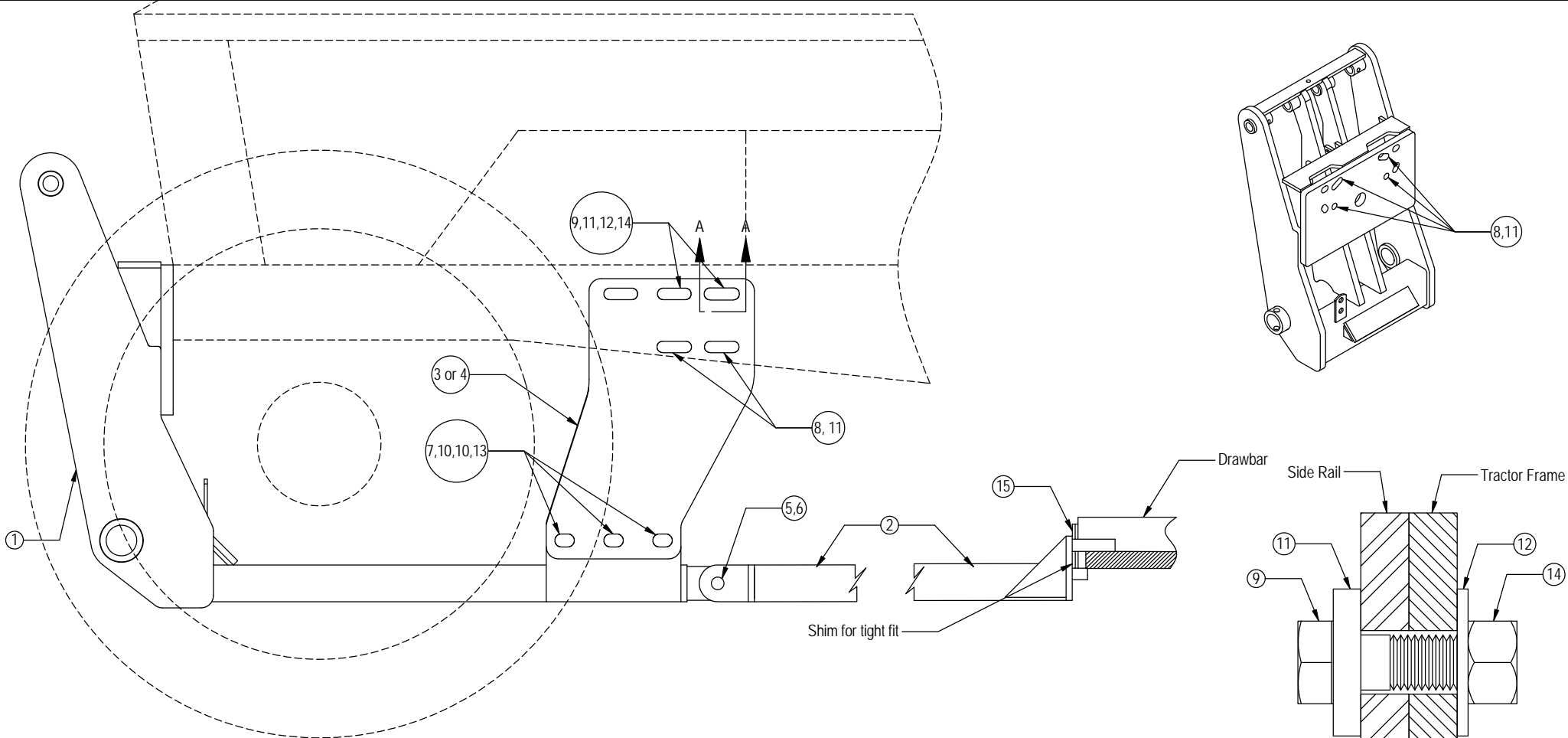
Once all bolts are installed, torque the front 20mm bolts to 432 ft-lbs., all 3/4" bolts to 257 ft-lbs., the
 10. remaining 20mm bolts to 432 ft-lbs., and all 1" bolts to 903 ft-lbs.

Install push pole (PN: 17-3665) with 1" pin (PN: 43-3472) and pin clip (PN: 43-7767). Place shims
 11. between rear of push pole and drawbar for tight fit.
 12. After first 8 hours of use, re-torque all bolts.

Check all fasteners regularly to ensure proper operation of equipment.


THE INFORMATION CONTAINED IN THIS DRAWING IS THE SOLE PROPERTY OF GROUSER PRODUCTS INC ANY REPRODUCTION IN PART OR WHOLE WITHOUT THE WRITTEN PERMISSION OF GROUSER PRODUCTS INC IS PROHIBITED.

REVISIONS:



ITEM NO.	QTY.	PART NO.	DESCRIPTION
1	1	54-3670	FH-400 UC JD 7000, Case Magnum
2	1	17-3665	FH-400 JD 7000 (Small Frame) Series Push Pole
3	1	46-3667	FH-400 JD 7000 Side Rail Left (FC)
4	1	46-3668	FH-400 JD 7000 Side Rail Right (FC)
5	1	43-3472	1" x 3.12" Welded Pin w/ Holes and Washer
6	1	43-7767	Cylinder Hitch Pin Clip
7	6	16-20560	1" x 2-1/2" Hex Bolt Gr.8 NC
8	8	16-1876	20mm x 2.5mm x 70mm Metric Hex Bolt Gr 10.9
9	4	16-20220	3/4" x 2-1/2" Hex Bolt Gr. 5 NC
10	12	57-20819	1" Flat Washer Heavy Duty Gr 8 (USS)
11	12	57-3680	3/4" ID x 2" OD x 3/8" Heavy Washer CZ Plated
12	4	57-20747	3/4" Flat Washer
13	6	70-20599	1" Hex Nut Gr.8 NC
14	4	70-20607	3/4" Hex Center Lock Nut NC
15	8	44-7221	FH-400 Push Pole Shim 1/8"

Note: Install all bolts before tightening
 Parts only shown on left side. Right side is identical.

 GROUSER PRODUCTS INC. 755 2nd Ave NW Phone 701.282.7710 West Fargo, ND 58078 Fax 701.282.8131 WWW.GROUSER.COM		
Date: 2/25/08	Scale: 1:12	Sheet: 1