



# 3-5 - AG PRO PLUS NANT

## Owner's Manual & Parts Book

Purchase Date

Serial Number

Model Number

Tractor Model

Dealer

# Contents

---

---

Description	Page
To The Owner, Maintenance, Safety Precautions, Torque Specifications & Warning _____	2-3
Unpacking Components, Undercarriage Installation & Assembling Lift Components _____	4
Installing Hydraulic Coupler Components _____	4
Lift System _____	5
Tractor Side & Blade Side Hydraulic Hose Routing _____	6-7
Initial Startup _____	8
Connecting and Disconnecting the Blade _____	9
Skid Shoe and Tilt Plate Adjustment _____	9
Blade Assembly _____	10-11
NANT Assembly _____	12-13
Blade Hydraulics _____	14
Hydraulic Schematic _____	15
Name Plate _____	16
Blade Hydraulic Schematic _____	17
Multi-Couplers _____	18-19
Contact Us, Improvements, & Warranty _____	20

## To The Owner

---

---

This manual contains information concerning the operation, adjustment, and maintenance of the 3-5 blade assembly. You have purchased dependable, long lasting equipment, but only by proper care and operation can you expect to receive the performance and long service built into our products. Please have all operators read this manual carefully and keep the manual available for ready reference. If you have any questions or concerns, contact Grouser Products.

## Maintenance

---

---

**Due to the harsh environment your equipment operates in, the following tasks should be performed every 10 hours or less.**

- Inspect all equipment before operation for existing or potential damages.
- Lubricate all joints with high quality grease.
- Inspect and tighten all bolts to torque specifications on page 3.
- Check replaceable cutting edge for wear ensuring there is enough material to prevent permanent damage to the blade.
- Make sure all non-rotating pins are secured properly.
- Check hydraulic cylinders and hoses for damage or leaks.
- Check skid shoes for wear and replace if necessary. For adjustment, see page 9.
- Inspect all tilt-ways for aggressive wear. See page 9 for tilt plate adjustment.

# Safety Precautions

A careful operator is the best operator. Most accidents can be avoided by observing certain precautions. To help prevent accidents, read and take the following precautions before operating this equipment. In addition to these precautions, please follow all safety and operational instructions of your tractor manufacturer.

## The Dozer:

1. The 3-5 Dozer should be operated only by those who are responsible and instructed to do so.
2. Read the owner's manual carefully before using this equipment. Lack of operating knowledge can lead to accidents.
3. Keep the dozer maintained in reliable and satisfactory condition to ensure your safety.
4. Make sure the area is clear of people before moving any equipment.
5. Do not modify or permit anyone else to modify or alter the equipment and its components without first consulting Grouser Products.

## Servicing the Dozer:

1. Read and follow all safety instructions provided by the tractor manufacturer.
2. Always use proper personal safety gear when performing maintenance on equipment.
3. Before servicing, relieve hydraulic pressure, stop engine and fully engage parking brake.
4. Escaping hydraulic fluid under pressure can penetrate skin causing serious injury. If fluid is injected into skin, obtain medical attention immediately.
  - DO NOT use your hand to check for leaks. Use a piece of cardboard or paper to search for leaks.
  - Stop the engine and relieve pressure before connecting or disconnecting lines.
  - Tighten all connections before starting the engine or pressurizing lines.

## Storing the Dozer:

1. Thoroughly clean the inside and outside of the dozer before storage. Use paint where necessary to prevent rust.
2. Check the dozer for worn or damaged parts. Install new parts as required.
3. Lubricate all pins and joints.

# Torque Specifications

All bolts should be tightened to the specifications in the charts below.

Size	Torque - Dry (ft-lbs)			
	SAE Grade 5		SAE Grade 8	
	UNC	UNF	UNC	UNF
5/16	17	19	24	27
3/8	30	35	45	50
7/16	50	55	70	80
1/2	75	85	110	120
9/16	110	120	150	170
5/8	150	170	210	240
3/4	260	300	380	420
7/8	430	470	600	670
1	640	720	910	1020

Size	Torque - Dry (ft-lbs)
	Grade 10.9
M18 x 2.50	284
M20 x 2.50	401
M22 x 2.50	547
M24 x 3.00	694

## Warning

When using the dozer blade, pay special attention to the area between the blade and the hood of the tractor. In the right conditions, material can build up. Grouser Products is not responsible for careless operation of the blade.

---

---

# Unpacking Components

---

---

Unstrap and remove the lift frame, hoses, top arms, and any boxes of hardware from the undercarriage. If any components are missing, call Grouser.

---

---

## Undercarriage Installation

---

---

Install undercarriage per the tractor specific mounting instructions.

---

---

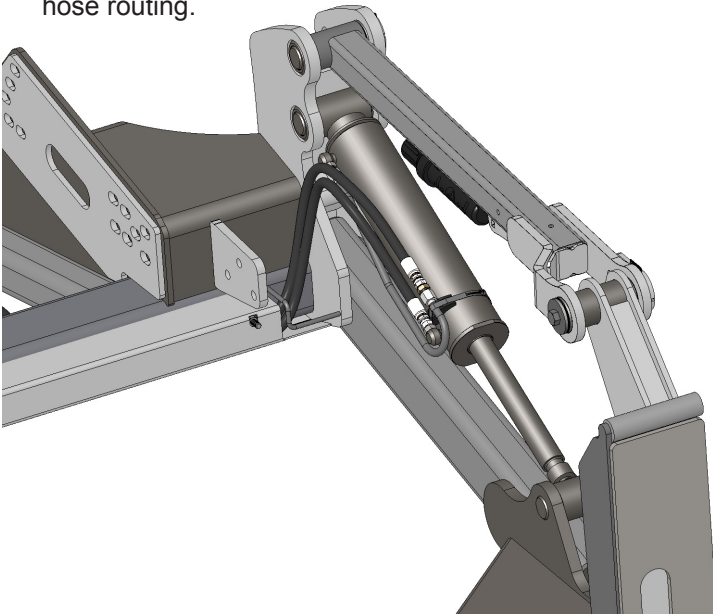
## Assembling Lift Components

---

---

Some assembly of Lift system components is necessary. Follow the steps listed below. Refer to Page 5 for the correct hardware and orientation of parts.

1. Remove all pins and fasteners on each side of the undercarriage and set aside for later installation.
2. Position the lift frame between the two plates on both sides of the undercarriage and align to the bottom holes.
3. Attach the lift frame, the base end of the lift cylinders, and the top arms to the undercarriage. Refer to Page 5 for proper components and orientation.
4. Attach the male quick attaches to the lift frame, and to the top arms. See Page 5 for proper orientation.
5. Tighten all fasteners.
6. Connect the lift hoses to the lift cylinders. The hoses are marked with 2 Orange Bands for the base end and 1 Orange Band for the rod end.
7. Verify that hoses are not twisted and protected from rubbing on any sharp edges. See picture below for proper hose routing.



---

---

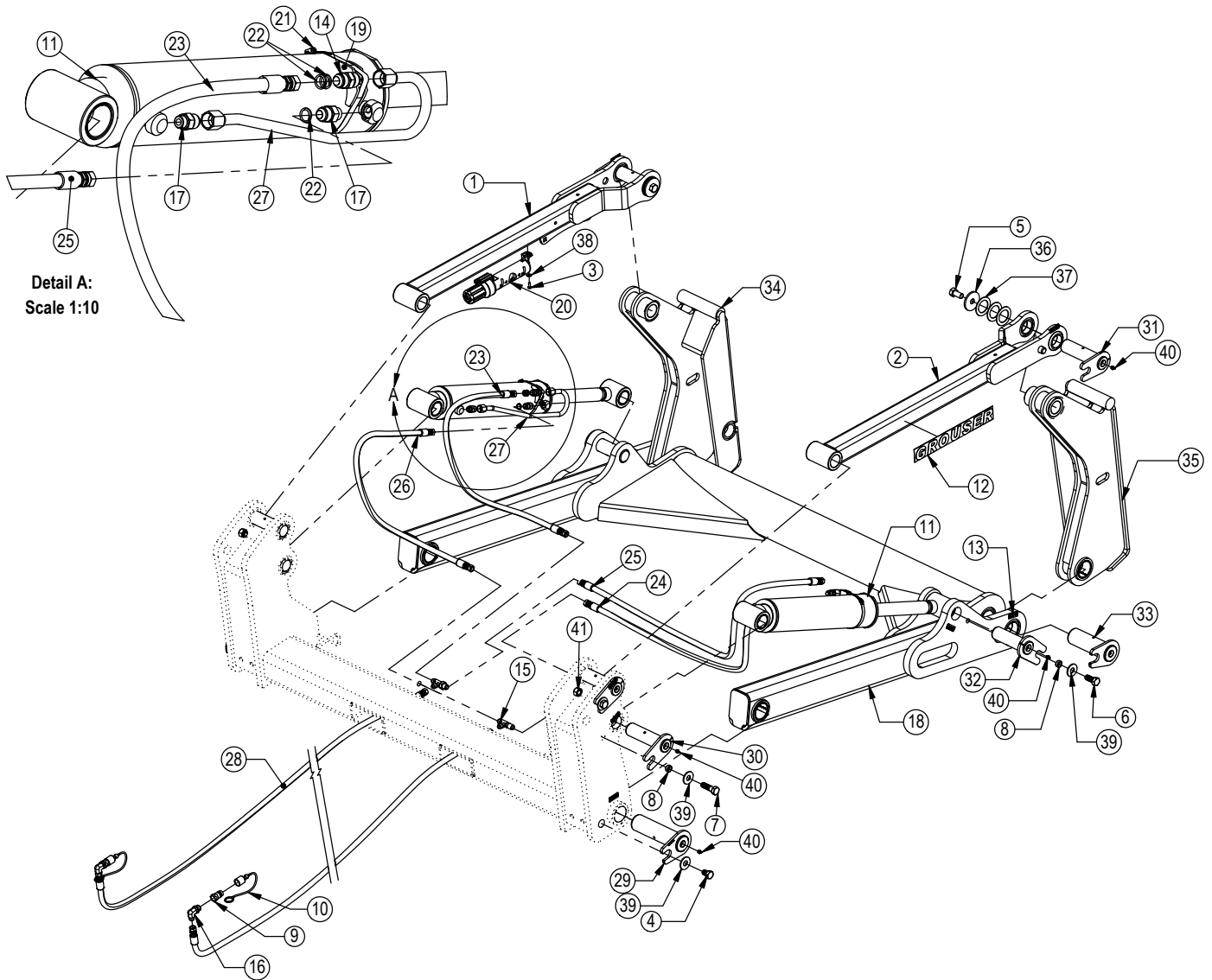
## Installing Hydraulic Coupler Components

---

---

**Note: Refer to Diagram on Page 6 for further information on hose routing and hose positions. The quantity and location of the female couplers is determined by blade functionality.**

8. Attach the coupler mounts to the left top arm and install the female quick couplers and 90° fittings.
9. Install each coupler into the designated hole on the coupler mount and fasten them in place with the coupler retainer plate, 3/8" x 3/4" bolts and 3/8" flange nuts.
10. Identify each remaining hose at the front of the undercarriage by the colored bands on the end of the hose and connect the hose to the corresponding 90° fitting and female coupler in the coupler mount.
11. If applicable, attach the wire harness to the coupler mount. Hold in place with a zip tie. Run the other end of the wire harness up into the cab of the tractor.
12. Locate the keyed and fused power supply. Connect the red wire to the power and the black to the ground. Install provided switch into an open switch hole in the right overhead console or another convenient place in the tractor.
13. Connect the wire harness to the switch.
14. Continue on Page 7 for instructions on how to remove the air from the system.



**Detail A:**  
Scale 1:10

\* Parts Not Shown

Item #A for Claas Tractors (24-19601)

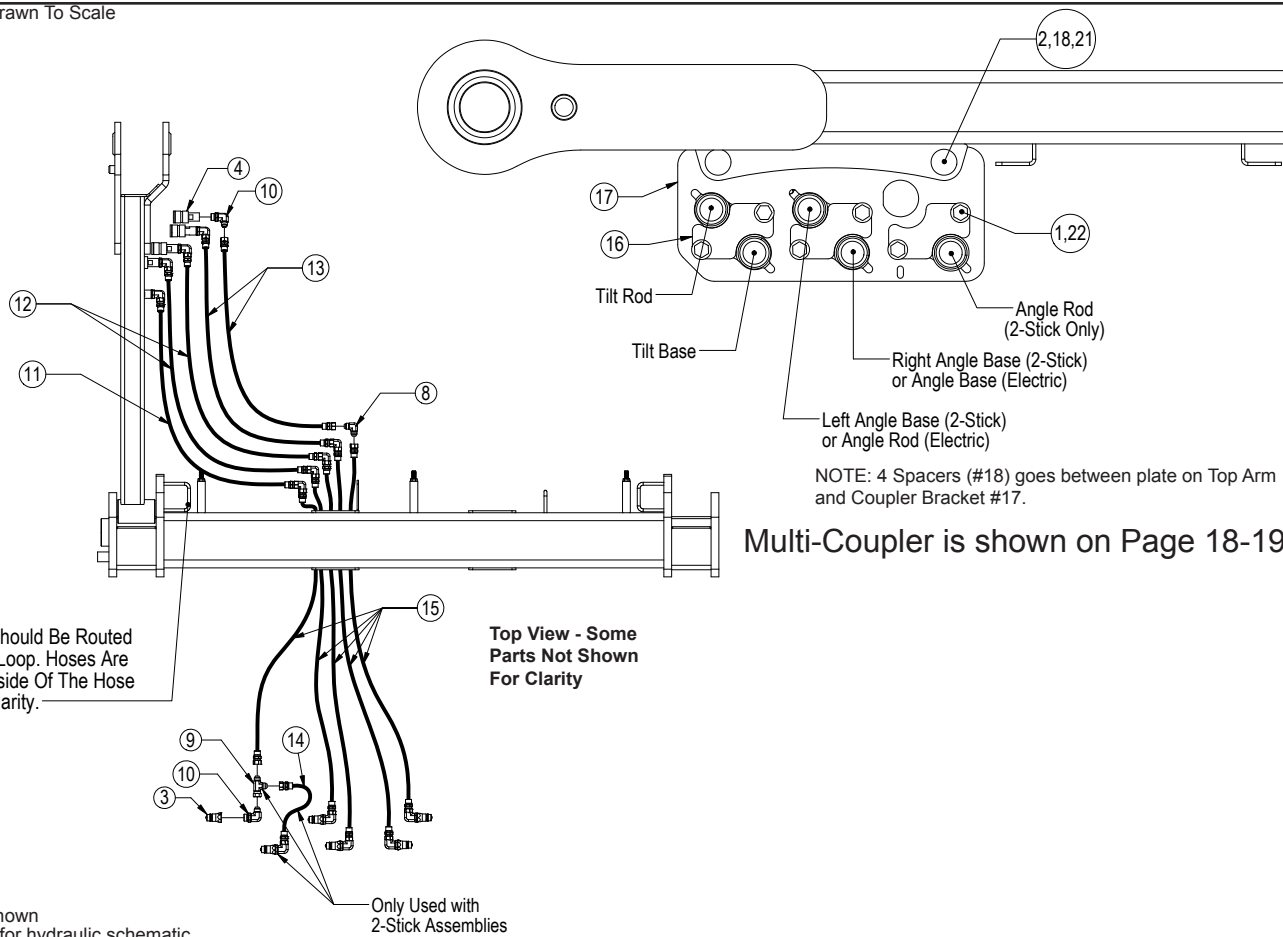
Item #B for Steiger (24-19601), New Holland (24-19601), and JD 9R Tractors (24-19602, 24-19603 or 24-19609)

Item #C for JD 9RX (24-19608), Versatile (24-19604) and Challenger Tractors (24-19607)

NO.	QTY.	PART NO.	DESCRIPTION
1	1	11-19975-L	Top Arm Weld
2	1	11-19975-R	Top Arm Weld
3	2	16-20002	1/4" x 3/4" Hex Bolt Gr 5 NC
4	2	16-20214	3/4" x 1" Hex Bolt Gr 5 NC
5	2	16-20216	3/4" x 1-1/2" Hex Bolt Gr 5 NC
6	4	16-20217	3/4" x 1-3/4" Hex Bolt Gr 5 NC
7	4	16-20220	3/4" x 2-1/2" Hex Bolt Gr 5 NC
8	8	19-13515	Spacer, NR Pin
9	2	25-34342	Tappet Quick Coupler Male - Poppet Style
10	2	25-3457	Pioneer Dust Cap Lift (Orange)
11	2	26-34745	4.5 x 18 Hydraulic Cylinder
12	2	27-9504	Decal, Grouser Horizontal
13	12	27-9507	Decal, Grease
14	2	31-11699-10-10	JIC Union
15	2	31-34194	Union Tee JIC
16B,C	2	31-34059	Straight Thread Elbow 90° JIC x O-Ring
16A	2	31-6802-12-10	Straight Thread Elbow 45° JIC x O-Ring
17	4	31-6400-10-8	Straight JIC x O-Ring
18	1	32-18630	Lift Frame, Ag Pro Plus
19	2	34-12932	Cylinder Saddle
20	1	34-14961	Manual Canister Small
21	2	34-16578	Hose Clamp (worm drive - 4.5)

NO.	QTY.	PART NO.	DESCRIPTION
22	15	34-18889-OR	-12 Orange - Spiral Band
23	1	35-12636-0515	51.5" x 5/8" -10JIC/-12JIC Hose
24	1	35-12636-0535	53.5" x 5/8" -10JIC/-12JIC Hose
25	1	35-12636-0665	66.5" x 5/8" -10JIC/-12JIC Hose
26	1	35-12636-0670	67" x 5/8" -10JIC/-12JIC Hose
27	2	35-18240	Lift Cylinder Steel Line
28A,B	2	35-12329-2930	293" (24.42") x 3/4" -12JIC/-12JIC Hose
28C	2	35-18984-3200	320" (26.67") x 3/4" -12JIC/-12JIC Hose
29	2	43-14725	Lift Frame / UC Pin
30	4	43-18120	Top Pin Weld
31	2	43-18127	Top Arm Pin Weld
32	2	43-18175	Lift Cyl Pin Weld
33	2	43-18635	Ag Pro Plus QA Pin
34	1	45-18130-L R5	Ag Pro + Male QA
35	1	45-18130-R R5	Ag Pro + Male QA
36	2	57-1530	3" OD X .75 ID X .25" HD Flat Washer
37	6	57-1811	2" Washer
38	2	57-20740	1/4" Flat Washer
39	10	57-20747	3/4" Flat Washer
40	12	58-9369	Straight 1/8" NPT Grease Zerk
41	2	70-20607	3/4" Center Lock Hex Nut NC
Cylinder	Part No.	Description	
26-34745	49-12278	Seal Kit 4.5" Bore x 2" Rod (658366) Nitrided Rod	

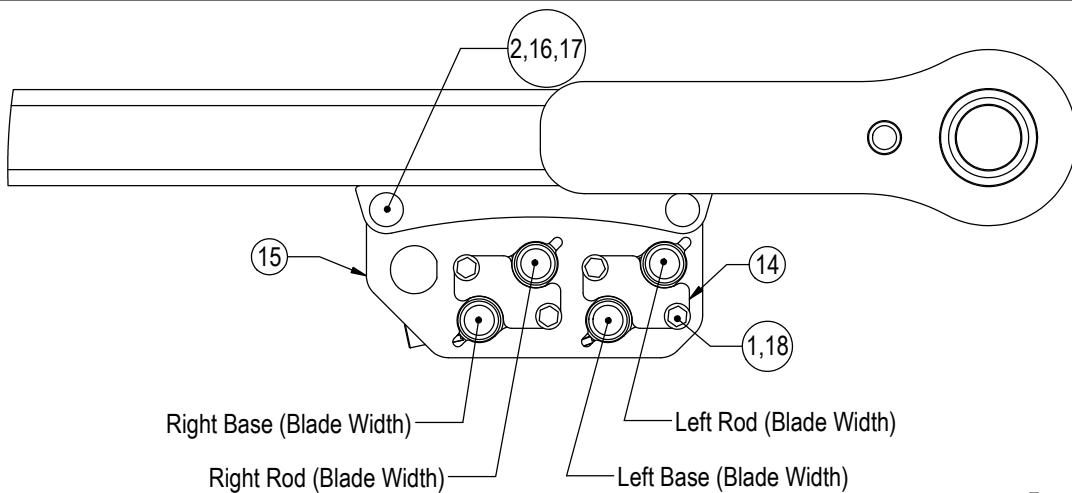
Hoses Not Drawn To Scale



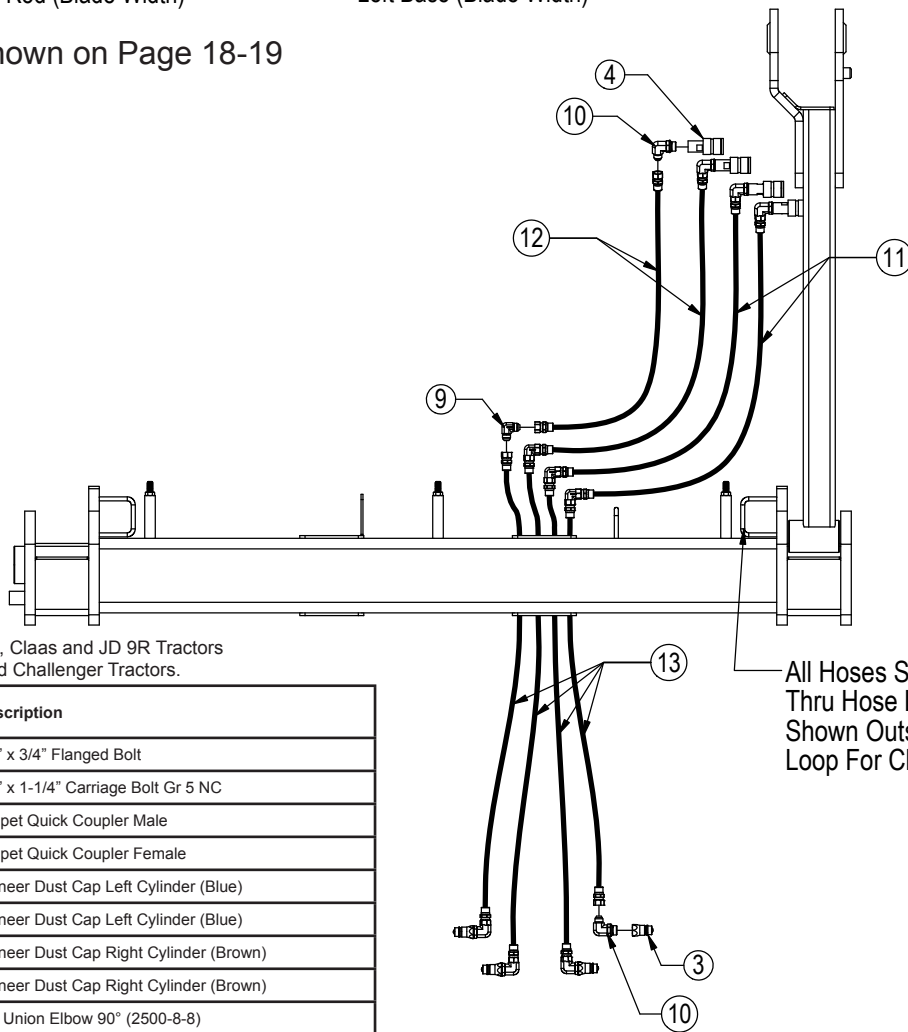
Multi-Coupler is shown on Page 18-19

\* Parts Not Shown  
 See Page 15 for hydraulic schematic.  
 Item #A & B for Claas Tractors.  
 Item #C for Steiger, New Holland, Claas and JD 9R Tractors and Item #D for JD 9RX, Versatile and Challenger Tractors.

Item No.	Part No.	Description	Configuration	NAHT	NANT
			Qty.	Qty.	Qty.
1	16-35C612	3/8" x 3/4" Flanged Bolt		2	-
2	16-21127	1/2" x 1-3/4" Carriage Bolt Gr 5 NC		2	-
3	25-34342	Tappet Quick Coupler Male		2	-
4	25-34321	Tappet Quick Coupler Female		2	-
5*	25-3401	Pioneer Dust Cap Left Angle (Yellow)		-	-
6*	25-3453	Pioneer Dust Cap Tilt (Green)		2	-
7*	25-3455	Pioneer Dust Cap Right Angle (Red)		-	-
8	31-15199-8-8	JIC Union Elbow 90° (2500-8-8)		2	-
9	31-34090	Swivel Nut Run Tee JIC (6602-8-8-8)		-	-
10	31-34051	Straight Thread Elbow 90° JIC x O-Ring (6801-8-10)		4	-
10A	31-34051	Straight Thread Elbow 90° JIC x O-Ring (6801-8-10)		2	-
10B	31-6802-08-10	Straight Thread Elbow 45° JIC x O-Ring (6802-08-10)		2	-
11	35-31132	69" x 1/2" -8JIC/-8JIC Hose W/Cordura		-	-
12	35-31133	72" x 1/2" -8JIC/-8JIC Hose W/Cordura		-	-
13	35-31134	75" x 1/2" -8JIC/-8JIC Hose W/Cordura		2	-
14	35-30121	35" x 1/2" -8JIC/-8JIC Hose		-	-
15D	35-18953-3200	320" (26.67") x 1/2" -8JIC/-8JIC Hose w/180" Cordura		2	-
15C	35-30183	293" (24.42") x 1/2" -8JIC/-8JIC Hose w/165" Cordura		2	-
16	44-14734	Female Coupler Retainer		1	-
17	44-18180	Female Coupler Mount Bracket		1	-
18	44-8490	Spacer Bushing		4	-
19*	69-18890	Wire Harness - Valve to Disconnect		-	-
20*	69-1531	Wire Harness - Disconnect to Tractor		-	-
21	70-20604	1/2" Hex Center Lock Nut NC		2	-
22	70-20622	3/8" Flange Hex Nut NC		2	-



Multi-Coupler is shown on Page 18-19



Item #A & B for Claas Tractors.

Item #C for Steiger, New Holland, Claas and JD 9R Tractors

Item #D for JD 9RX, Versatile and Challenger Tractors.

Item No.	Qty.	Part No.	Description
1	4	16-35C612	3/8" x 3/4" Flanged Bolt
2	2	16-21125	1/2" x 1-1/4" Carriage Bolt Gr 5 NC
3	4	25-34342	Tappet Quick Coupler Male
4	4	25-34321	Tappet Quick Coupler Female
5*	2	25-3403	Pioneer Dust Cap Left Cylinder (Blue)
6*	2	25-3404	Pioneer Dust Cap Left Cylinder (Blue)
7*	2	25-3405	Pioneer Dust Cap Right Cylinder (Brown)
8*	2	25-3406	Pioneer Dust Cap Right Cylinder (Brown)
9	4	31-15199-8-8	JIC Union Elbow 90° (2500-8-8)
10	8	31-34051	Straight Thread Elbow 90° JIC x O-Ring (6801-8-10)
10A	4	31-34051	Straight Thread Elbow 90° JIC x O-Ring (6801-8-10)
10B	4	31-6802-08-10	Straight Thread Elbow 45° JIC x O-Ring (6802-08-10)
11	2	35-31133	72" x 1/2" -8JIC/-8JIC Hose W/Cordura
12	2	35-31134	75" x 1/2" -8JIC/-8JIC Hose W/Cordura
13D	4	35-18953-3200	320" (26.67") x 1/2" -8JIC/-8JIC Hose w/180" Cordura
13C	4	35-30183	293" (24.42") x 1/2" -8JIC/-8JIC Hose w/165" Cordura
14	2	44-14734	Female Coupler Retainer
15	1	44-16236	Female Coupler Mount Bracket
16	4	44-8490	Spacer Bushing
17	2	70-20604	1/2" Hex Center Lock Nut NC
18	4	70-20622	3/8" Flange Hex Nut NC

# Initial Startup Instructions

---

---

Prior to operating the hydraulics, air must be removed from the system. Follow the steps below for each function on your blade.

## ***Lift Function:***

1. With the lift frame down on the ground, loosen the fittings on both ends of the lift cylinders.
2. Actuate the raise function to supply oil to the rod end of the cylinders.
3. When oil starts to flow from the fittings, stop oil flow, and tighten the fitting on the rod end of the lift cylinders.
4. Continue to flow oil until the system is fully raised and then block the lift frame.
5. Actuate the function in the opposite direction to supply oil to the base end of the lift cylinders.
6. When all air is removed from the lift system, stop oil flow and tighten the fittings on the base end of the lift cylinders.
7. Raise lift system and remove blocks. Cycle up and down 5 more times.
8. Check tractor oil level and fill if necessary.
9. Continue with connecting the blade on Page 9.

## ***Blade Width Function:***

1. Loosen the fittings on the rod and base end of the blade width cylinders.
2. Actuate the function to extend the right cylinder and supply oil to the base end.
3. When oil starts to flow from the fitting, stop oil flow, and tighten the fitting on the base end of the right cylinder.
4. Fully extend the right cylinder.
5. Actuate the function in the opposite direction to supply oil to the rod end of the right cylinder.
6. When all air is removed from the system, stop oil flow and tighten the fitting on the rod end of the right cylinder.
7. Repeat Steps 2-7 for the left cylinder.
8. Cycle both cylinders in and out 5 more times.
9. Check tractor oil level and fill if necessary.

Run the blade through all the functions. If any function does not work properly, bleed the air out of the system for that function again. If problem still persists, call Grouser Products.

**NOTE: If blade does not function to the operator's liking or preferred direction, swap the couplers at the rear of the tractor or control the function location in the cab.**



# Connecting and Disconnecting the Blade

## To Connect:

1. Lift the locking latch and pull the quick attach lock handle on the left side of the system to open the quick attach system. Refer to Page #13 for further clarification on the quick attach system.
2. Drive the tractor forward slowly until the top edge of the male quick attach is under the top hook of the female quick attach already on the blade assembly.
3. Raise the lift system until the male quick attach engages the female. Continue to raise the lift system until the blade is off the ground and the female quick attaches are against the front of the male quick attaches.
4. Shut off the tractor engine and set the parking brake.
5. Push the quick attach lock handle and lift the locking latch to the lock the handle in place.
6. Connect hydraulics couplers on the top arm. Refer to Page #6 for proper locations of all functions.
7. If applicable, plug the male blade break away end of the wire harness into the female blade break away end of the wire harness on the top arm.
8. Refer to the Initial Startup Instructions on Page 8 before operating any function on the blade.

## To Disconnect:

1. Place a block under the cutting edge to provide the proper blade angle for disconnecting the quick attach. You will need about 5-6" of height.
2. Set the blade on the ground.
3. Unhook all of the couplers on the top arm.
4. Lift the locking latch and pull the quick attach lock handle to unlock the quick attach system.
5. Slowly lower the lift system to disengage the blade.
6. Slowly back away from the blade. When lift system is clear from the blade, raise the lift system.

# Skid Shoe and Tilt Plate Adjustment

## Skid Shoe Adjustment:

1. Remove the handle from the ratchet keeper by pulling the hitch clip pin and insert into the handle on the ratchet jack.
2. Loosen the locking nut on the ratchet jack.
3. Hold the body of the ratchet jack and rotate the ratchet jack handle to raise or lower the skid shoes.
4. If the skid shoe is not moving in the proper direction, move the forward/reverse lever on the handle (see Figure 2). Rotate the ratchet jack handle again to move the skid shoe in the direction needed.
5. After skid shoe is adjusted, rotate the ratchet jack handle until it rests up against the ratchet keeper. Return the removable handle to the ratchet keeper ensuring that the ratchet jack handle is captured by the removable handle and the ratchet keeper. Secure the handle to the ratchet keeper with a hitch clip pin.
6. Tighten the locking nut against the ratchet jack body to keep it from moving.
7. When skid shoes are worn, replace with new skid shoes.

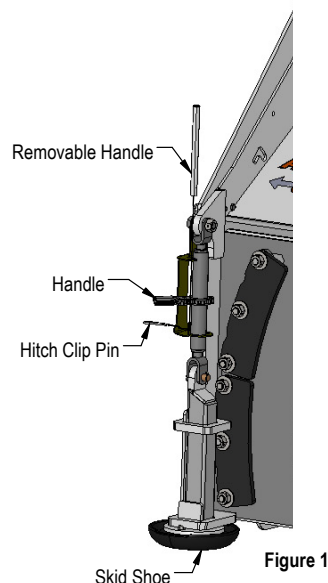


Figure 1

## Tilt Plate Adjustment:

1. Remove nuts and each tilt plate separately.  
Note: Don't remove all of the nuts at the same time.
2. Install or remove washers as needed to adjust tilt-way clearance to have 1/16" - 1/8" of clearance.
3. Once the tilt-way clearance is set, tighten nuts to 640 ft-lbs.

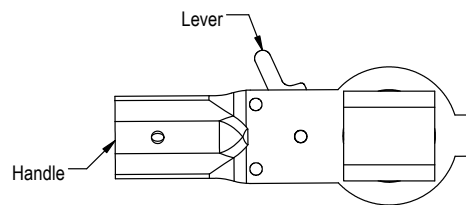
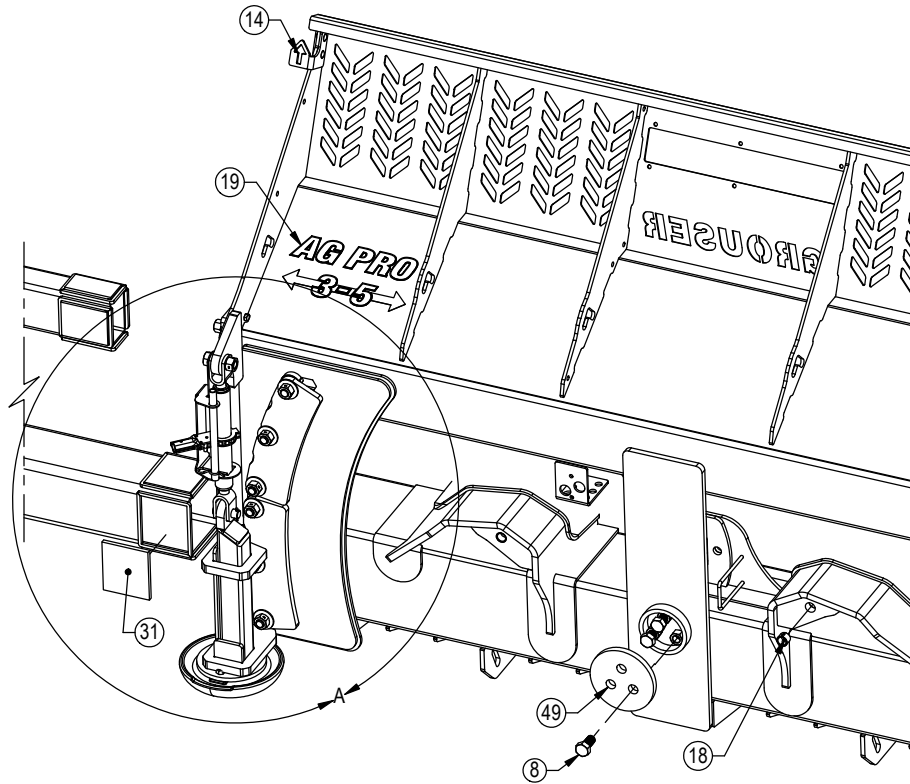
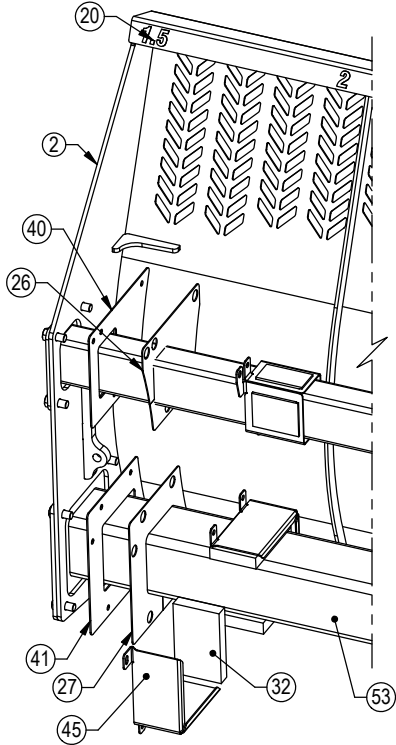
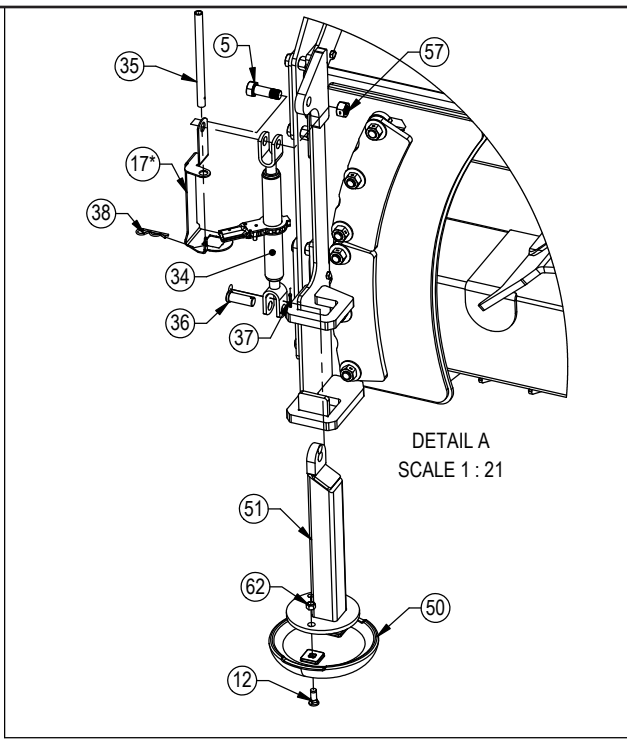


Figure 2



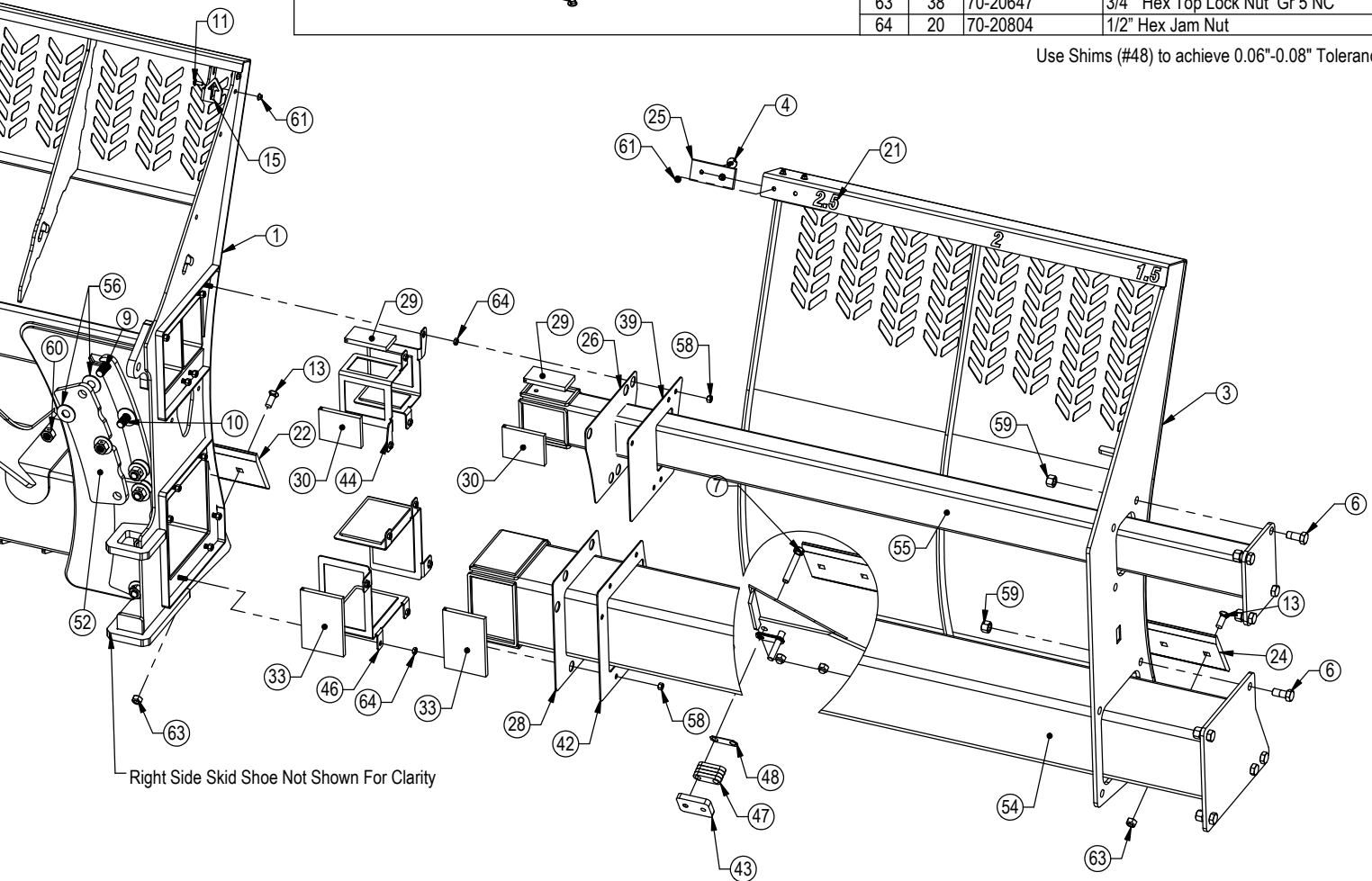
\* Part Not Shown

ITEM NO.	QTY.	PART NO.	DESCRIPTION
1	1	15-18735R2	XAXT Blade Weld
2	1	15-18760-L	3-5 Slider End Weld - Left
3	1	15-18760-R	3-5 Slider End Weld - Right
4	12	16-16305	3/8" x 1.25" Flanged Elevator Bolt
5	2	16-18945	1" x 3" Hex Bolt Gr 5 NC - Short Thread
6	18	16-20538	7/8" x 2" Hex Bolt Gr 8 NC
7	4	16-20517	3/4" X 4-1/2" Hex Bolt Gr. 8 NC
8	3	16-20558	1" X 2" Hex Bolt Gr. 8 NC
9	4	16-20561	1" x 2-3/4" Hex Bolt Gr.8 NC
10	8	16-20563	1" x 3-1/4" Hex Bolt Gr.8 NC
11	4	16-21064	3/8" x 1" Carriage Bolt Gr 5 NC
12	4	16-21666	5/8" x 1-3/4" Plow Bolt Gr 5 NC
13	38	16-21748	3/4" X 2" Plow Bolt Gr 8 NC
14	1	18-16304-L	Bracket, Left Location
15	1	18-16304-R	Bracket, Right Location
16	1	18-18498-L R2	Ratchet Keeper - Left
17*	1	18-18498-R R2	Ratchet Keeper - Right
18	2	19-7774	1" x 1" Spring Bushing
19	1	27-18936	Ag Pro 3-5 Decal
20	1	27-18937-L	Ag Pro 3-5 Width Decal - Left
21	1	27-18937-R	Ag Pro 3-5 Width Decal - Right
22	1	29-11118-4	4' - 3/4" x 8" Cutting Edge
23*	1	29-11118-5	5' - 3/4" x 8" Cutting Edge
24	2	29-18777	58" - 3/4 x 8 Cutting Edge
25	6	34-16158	Bearing, 2.625 x 6.00 W/Holes
26	2	34-16419	Top Seal
27	1	34-16420	8" Tube Seal
28	1	34-16421	10" Tube Seal
29	8	34-16425	Top Narrow UHMW
30	8	34-16426	Top Wide UHMW
31	4	34-16427	8" Inner UHMW
32	4	34-16428	8" Outer UHMW
33	8	34-16429	10" UHMW
34	2	34-17565	Skid Shoe Ratchet Jack (S01054100)



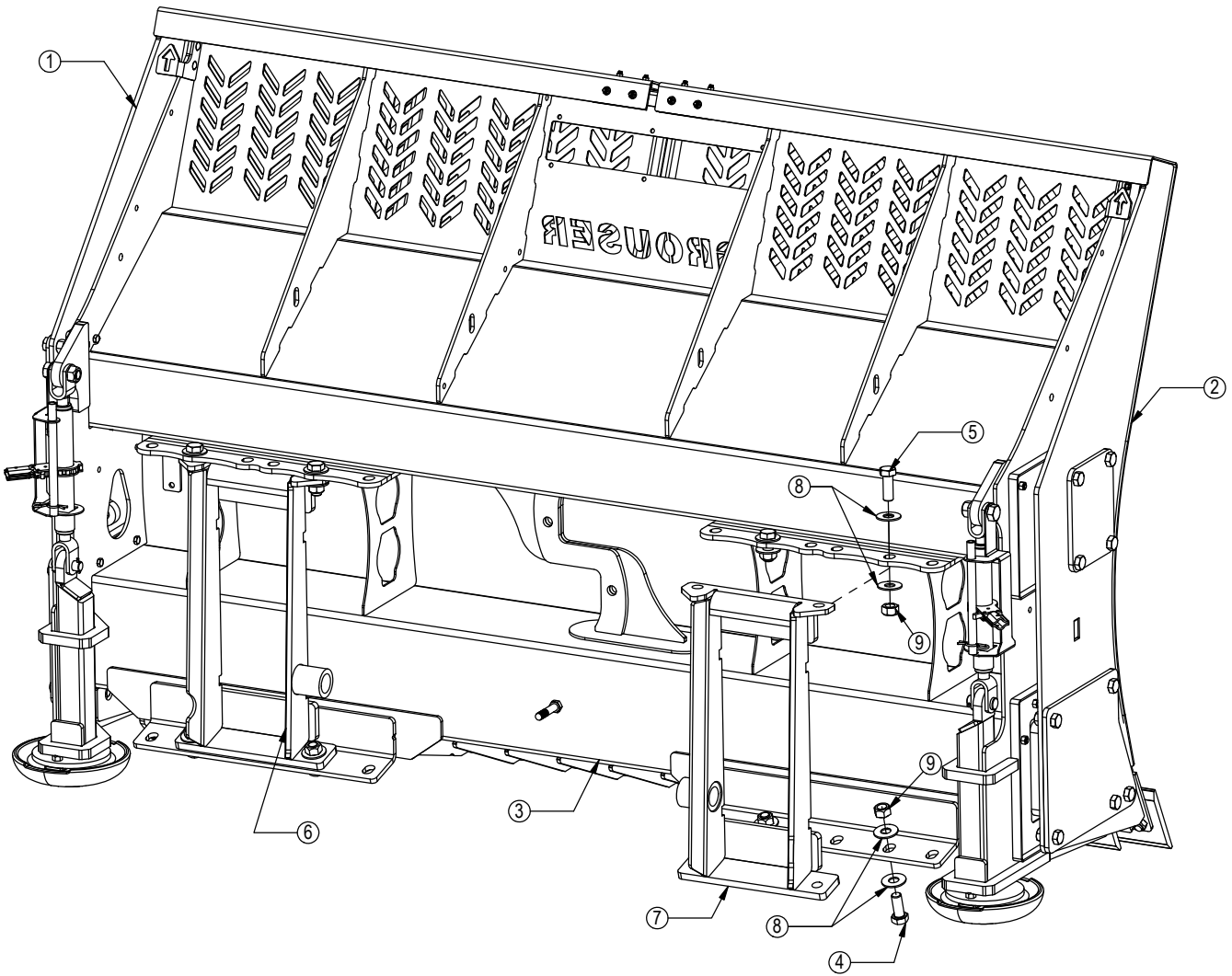
ITEM NO.	QTY.	PART NO.	DESCRIPTION
35	2	34-17567	Handle, Ratchet Jack
36	2	43-18463	1" x 2.75" Pin (S57190400)
37	2	43-18943	3/16" x 1-1/2" Cotter Pin
38	2	43-7767	Cylinder Pin Clip
39	1	44-16401 R1	Plate, Top Cover Right
40	1	44-16402 R1	Plate, Top Cover Left
41	1	44-16403	Plate, 8" Cover
42	1	44-16404 R1	Plate, 10" Cover
43	2	44-16417 R1	Plate, Slider
44	4	44-16422	Top Outer Retainer
45	2	44-16423 R1	8" Outer Retainer
46	2	44-16424	10" Outer Retainer
47	2	44-16525	Standoff
48	12	44-16977 R1	Plate, Slider Standoff Shim
49	1	44-3749R1	Backdrag Brace Plate
50	2	50-15458	12" Round Mushroom Skid Shoe
51	2	50-18775	Slider Skid Shoe Weld
52	4	52-18299R1	Tilt Plate
53	1	53-18768R1	8 x 8 Tube Weld, 3-5 Slider
54	1	53-18770R2	10 x 10 Tube Weld, 3-5 Slider
55	2	53-18772R1	4 x 6 Tube Weld, 3-5 Slider
56	24	57-20749	1" Flat Washer
57	2	70-18999	1" Hex Center Lock Nut Gr 2 NC - YZ
58	24	70-20584	1/2" Hex Nut Gr 5 NC
59	18	70-20598	7/8" Hex Nut Gr 8 NC
60	12	70-20609	1" Hex Center Lock Nut Gr.2 NC
61	16	70-20622	3/8" Flange Hex Nut Gr 5 NC
62	4	70-20646	5/8" Hex Top Lock Nut Gr 5 NC
63	38	70-20647	3/4" Hex Top Lock Nut Gr 5 NC
64	20	70-20804	1/2" Hex Jam Nut

Use Shims (#48) to achieve 0.06"-0.08" Tolerance

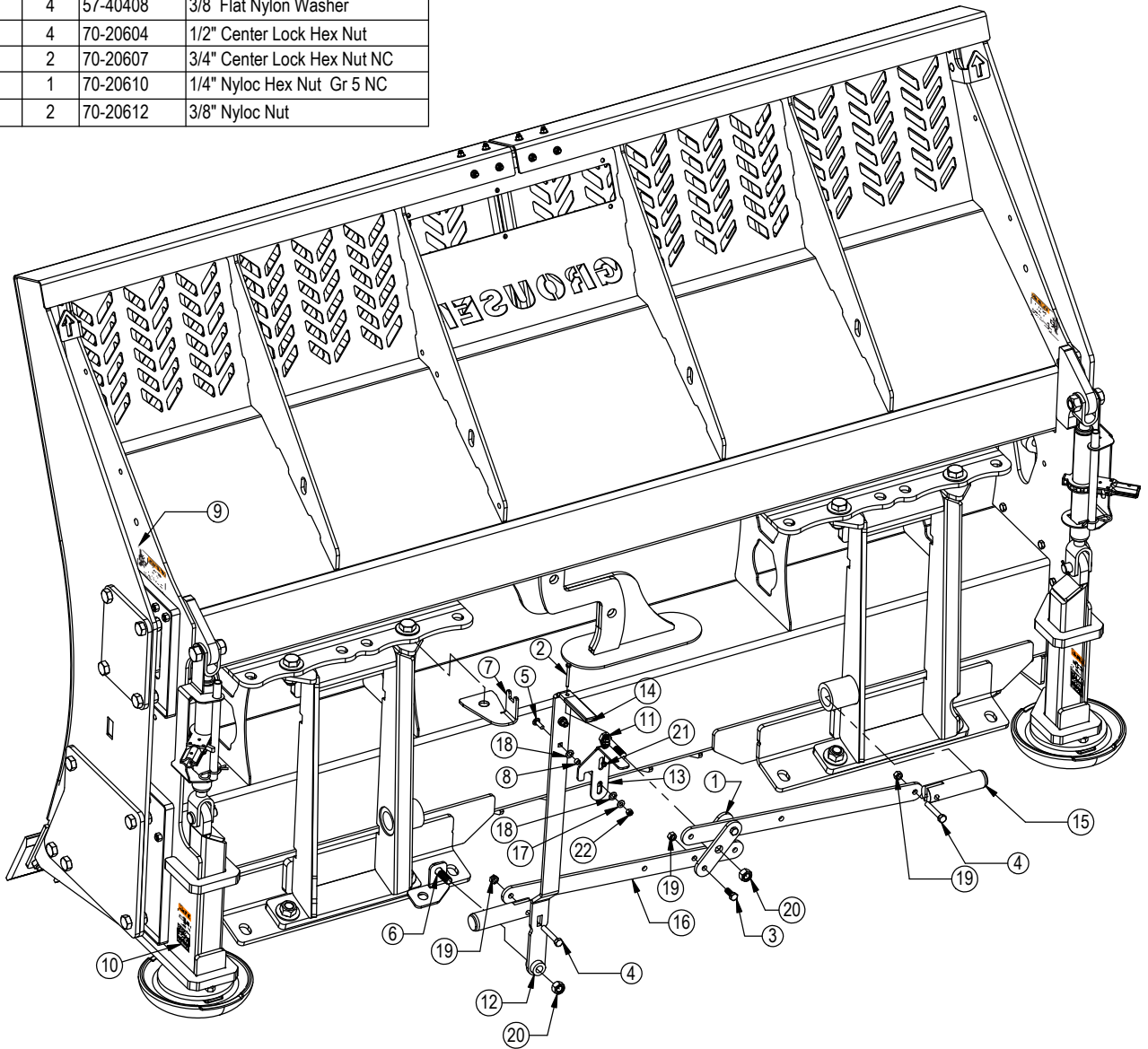


ITEM NO.	QTY.	PART NO.	DESCRIPTION
1	1	15-18760-L	3-5 Slider End Weld - Left
2	1	15-18760-R	3-5 Slider End Weld - Right
3	1	15-18795R2	NANT 3-5 Blade Weld
4	5	16-20560	1" x 2-1/2" Gr.8 NC Hex Bolt
5	3	16-20561	1" x 2-3/4" Hex Bolt Gr.8 NC
6	1	45-14710-L R2	Quick Attach - Female Left
7	1	45-14710-R R2	Quick Attach - Female Right
8	16	57-20819	1" Flat Washer Heavy Duty Gr 8 (USS)
9	8	70-20999	1" Hex Top Lock Nut Gr 8 NC (YZ)

See Pages 10-11 for remaining blade components.

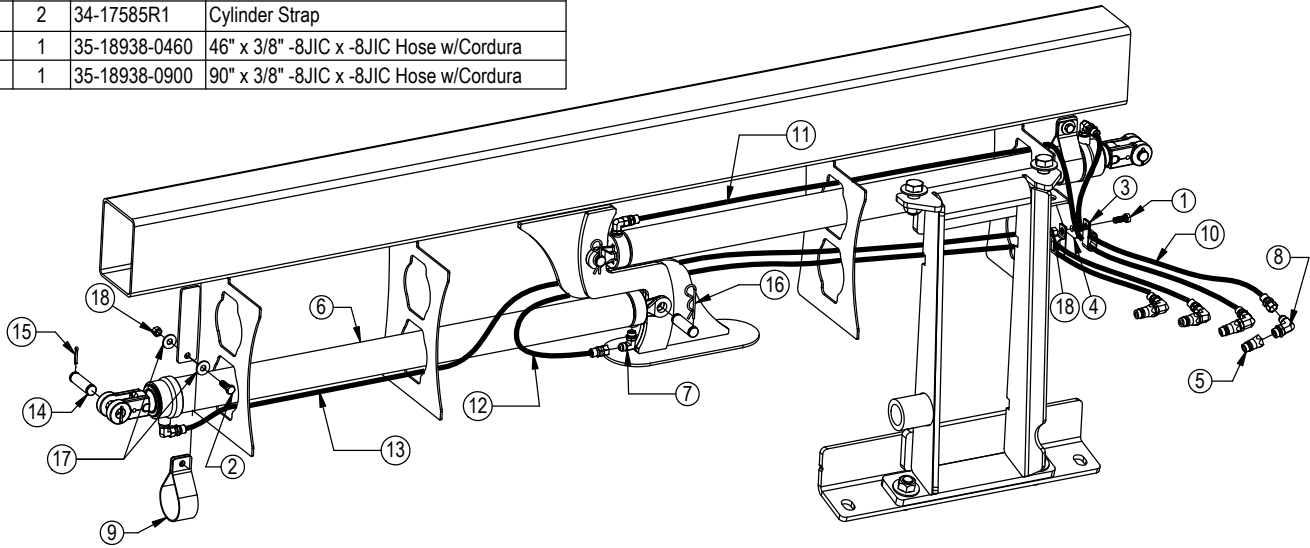


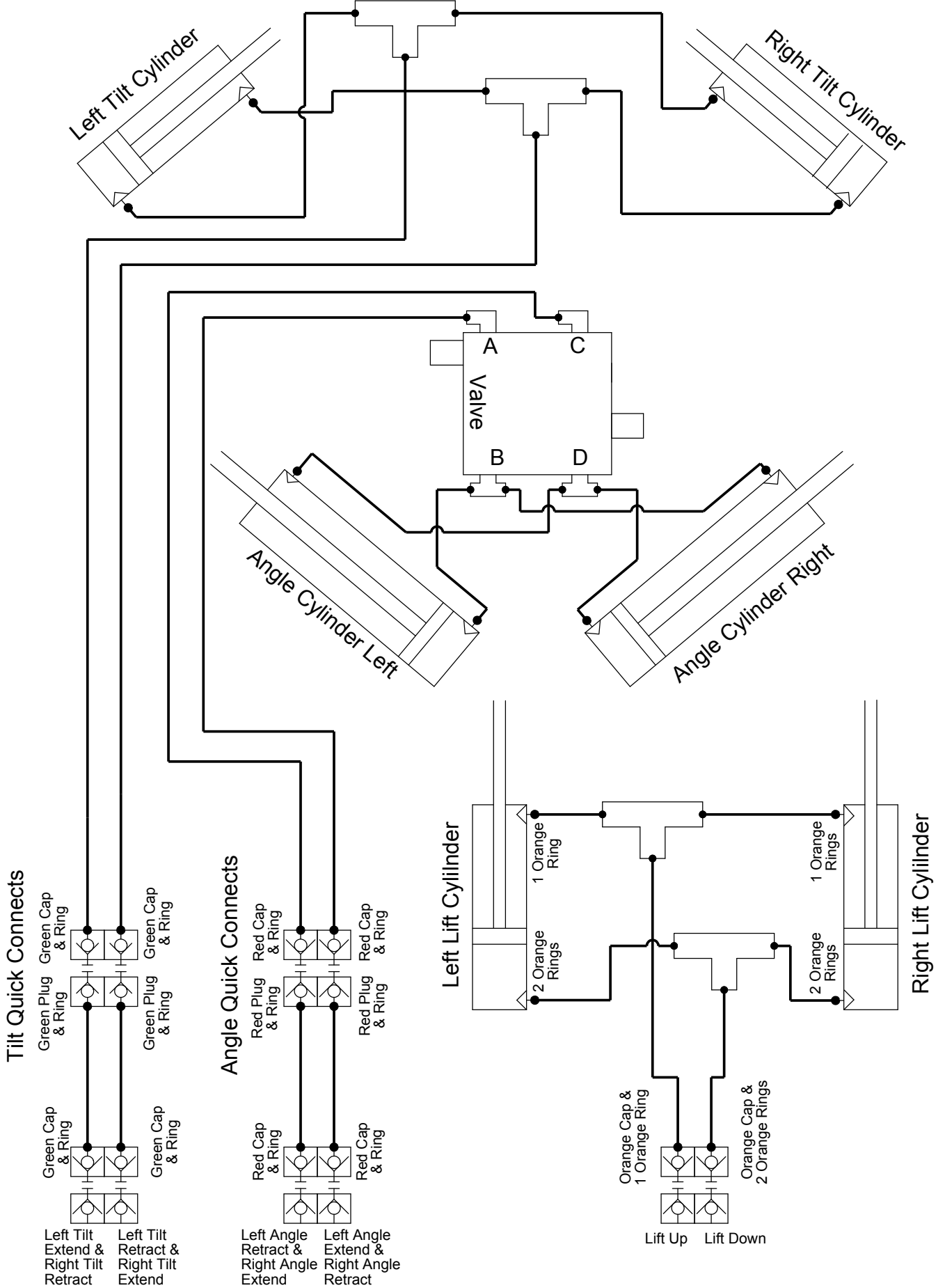
ITEM NO.	QTY.	PART NO.	DESCRIPTION
1	1	11-3049R3	Bell Crank
2	1	16-20011	1/4" x 2-3/4" Hex Bolt Gr 5 NC
3	2	16-20125	1/2" x 1-1/4" Hex Bolt Gr 5 NC
4	2	16-20132	1/2" X 3" Hex Bolt Gr. 5 NC
5	2	16-21065	3/8" x 1.25 Carriage Bolt Gr 5 NC
6	1	18-19362R1	Bolt Bracket, Weld
7	1	18-19365	Latch Stop
8	2	19-40440	Bushing, Spacer
9	2	27-2409	Pinc Decal (Hand)
10	2	27-9503	Pinc Decal (Foot)
11	1	34-17799	Latch Spring
12	1	39-19360	Handle Weld
13	1	39-19366R1	Latch
14	1	39-3072	Rubber Handle
15	2	43-18965R1	Ag Pro Lock Pin
16	2	44-18970	Link Plate
17	2	57-20742	3/8" Flat Washer
18	4	57-40408	3/8 Flat Nylon Washer
19	4	70-20604	1/2" Center Lock Hex Nut
20	2	70-20607	3/4" Center Lock Hex Nut NC
21	1	70-20610	1/4" Nyloc Hex Nut Gr 5 NC
22	2	70-20612	3/8" Nyloc Nut



ITEM NO.	QTY.	PART NO.	DESCRIPTION
1	1	16-20125	1/2" x 1-1/4" Hex Bolt Gr 5 NC
2	2	16-20126	1/2" x 1-1/2" Hex Bolt Gr. 5 NC
3	2	18-12991	Double Tube Clamp
4	1	18-19187-R	Bracket, P-Clamp
5	4	25-34342	Tappet Quick Coupler Male - Poppet Style
6	2	26-34741	3 x 48 Hydraulic Cylinder
7	4	31-34050	Straight Thread Elbow 90° JIC x O-Ring
8	4	31-34051	Straight Thread Elbow 90° JIC x O-Ring
9	2	34-17585R1	Cylinder Strap
10	1	35-18938-0460	46" x 3/8" -8JIC x -8JIC Hose w/Cordura
11	1	35-18938-0900	90" x 3/8" -8JIC x -8JIC Hose w/Cordura

ITEM NO.	QTY.	PART NO.	DESCRIPTION
12	1	35-18938-1060	106" x 3/8" -8JIC x -8JIC Hose w/Cordura
13	1	35-18938-1380	138" x 3/8" -8JIC x -8JIC Hose w/Cordura
14	4	43-16306	Cylinder Pin
15	4	43-18943	3/16" x 1-1/2" Cotter Pin
16	4	43-7767	Cylinder Pin Clip
17	4	57-20744	1/2" Flat Washer
18	3	70-20604	1/2" Center Lock Hex Nut





Female Quick Connects At Rear Of Tractor

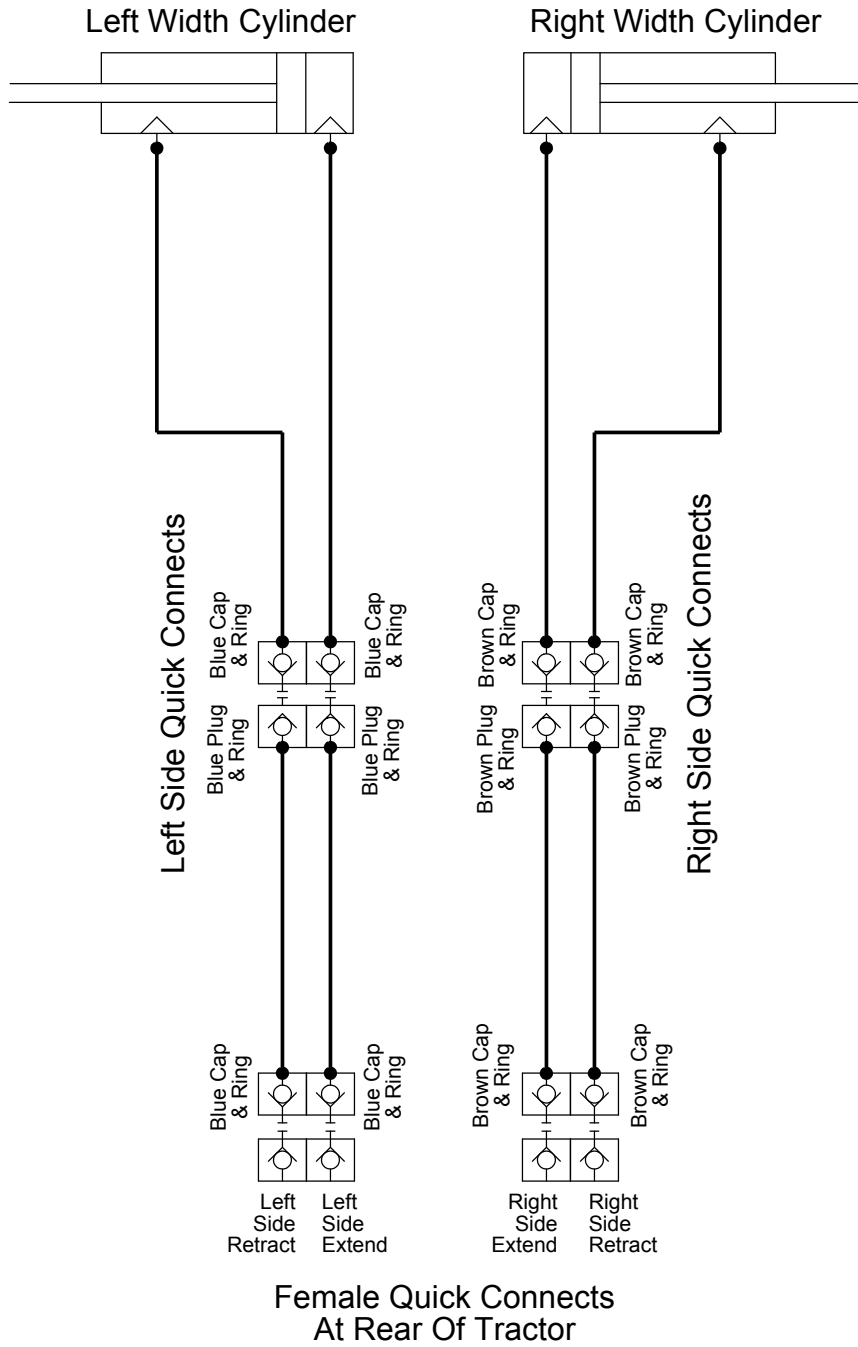


\* Parts Not Shown

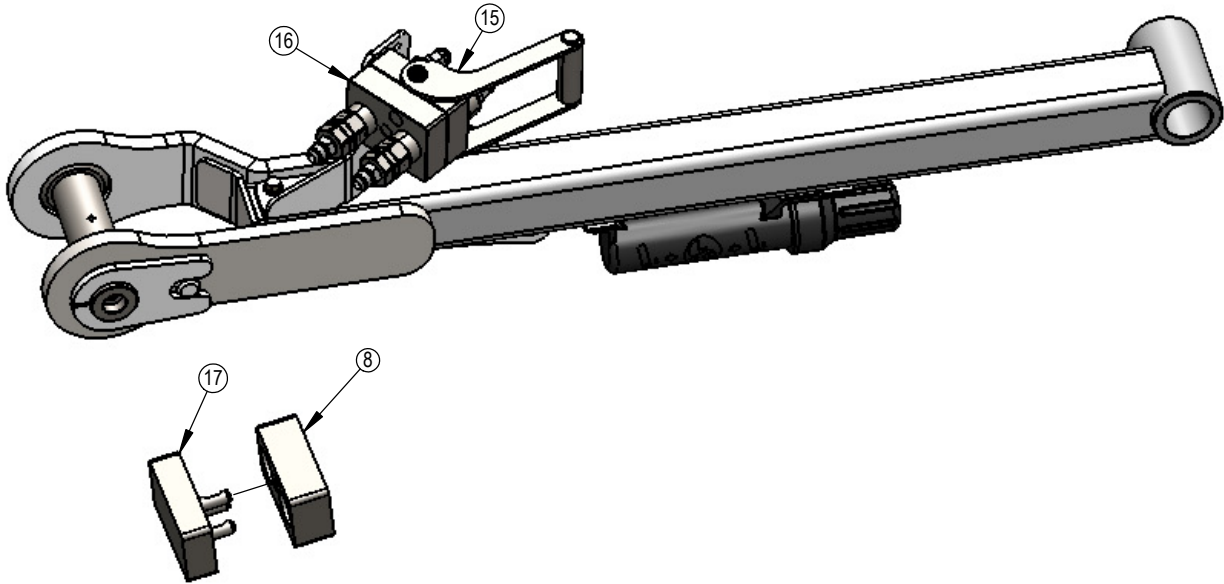
ITEM NO.	QTY.	PART NO.	DESCRIPTION
1	6	16-21064	3/8" x 1" Carriage Bolt Gr 5 NC
2	1	44-18995	Ag Pro 3-5M Name Plate
3*	1	44-15600	Custom Name Plate
4	6	70-20622	3/8" Flange Hex Nut Gr 5 NC



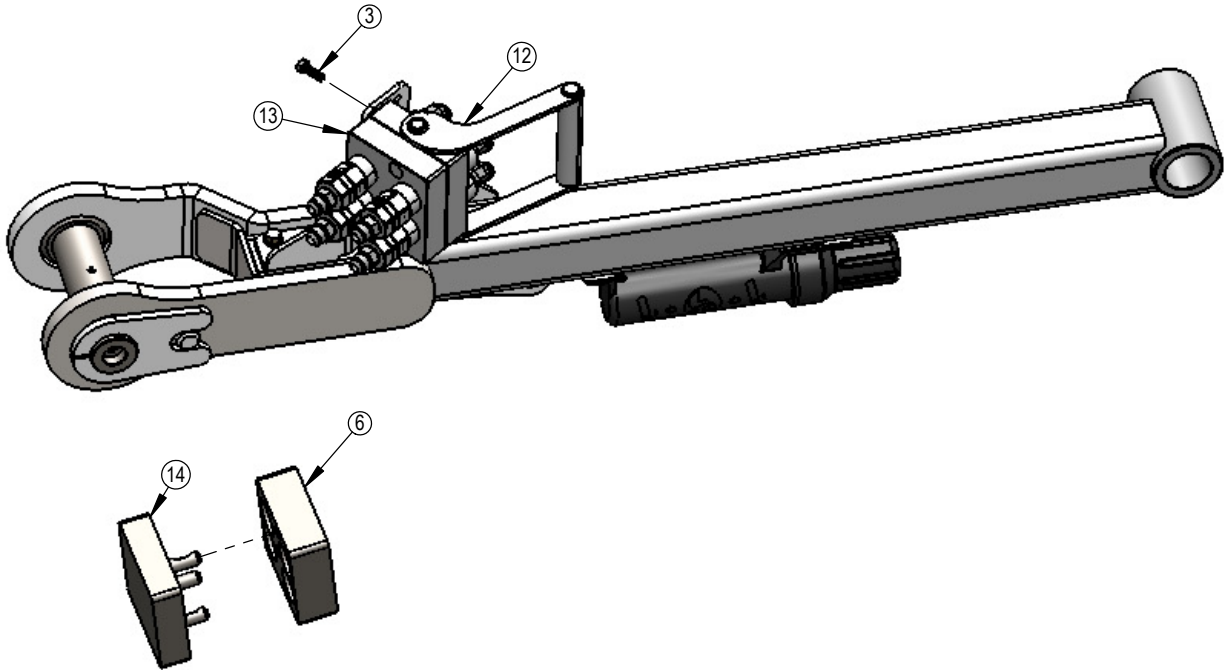
### 3-5 Blade Cylinders



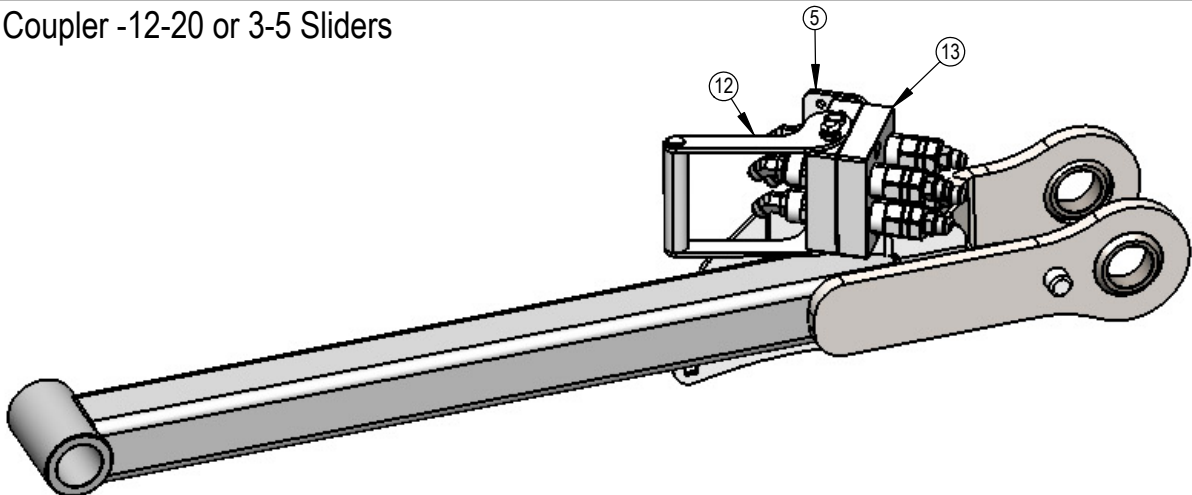
2 Port Multi Coupler - NAHT or HANT Electric



4 Port Multi Coupler -HANT 2-Stick or HAHT Electric



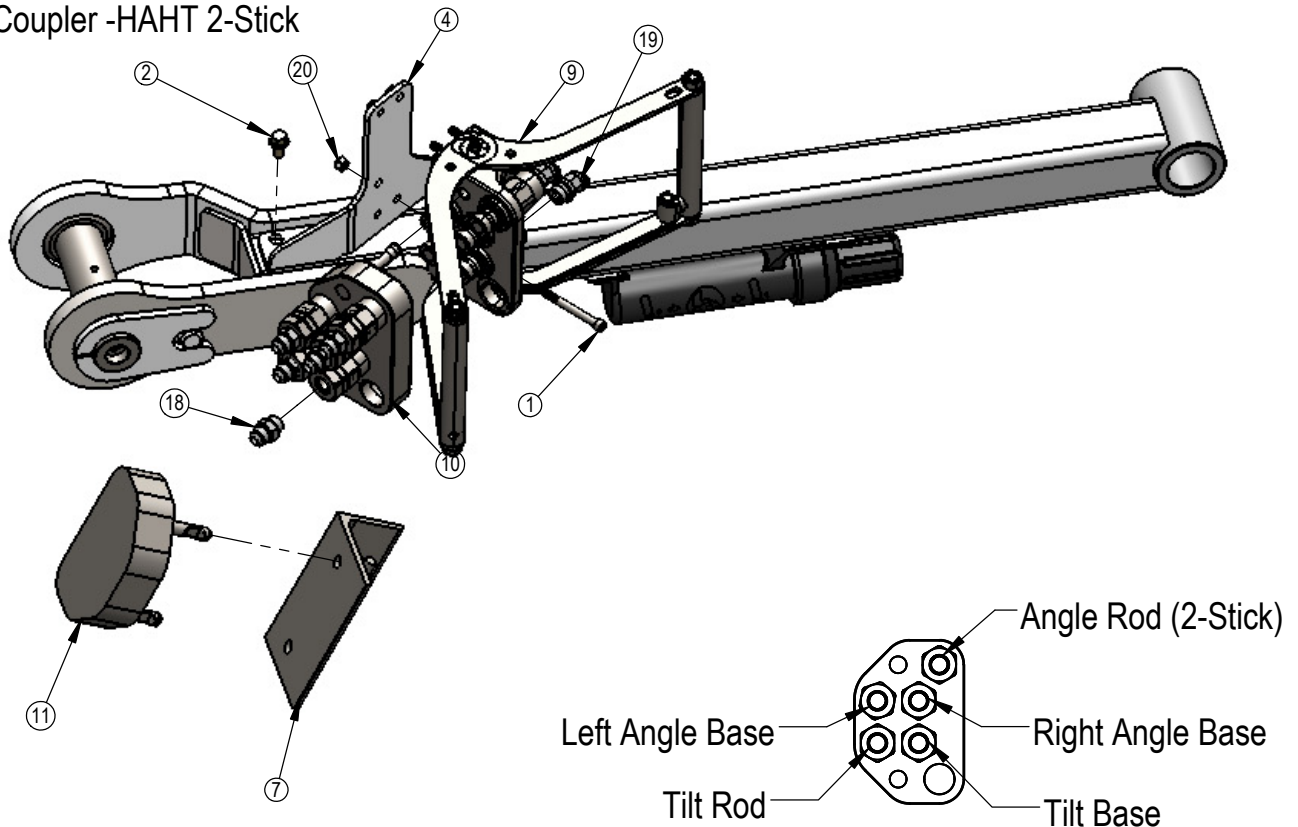
4 Port Multi Coupler -12-20 or 3-5 Sliders



ITEM NO.	PART NO.	HAHT 2-Stick	HANT 2-Stick or HAHT Electric	NAHT or HANT Electric	12-20 or 3-5 Blades	DESCRIPTION
1	16-18957	4	-	-	-	5/16" x 3-1/4" Allen Head Screw
2	16-35C612	3	3	3	3	3/8" x 3/4" Flange Bolt
3	16-812525	-	2	2	2	8mm x 1.25mm x 25mm Metric Hex Bolt Gr 10.9
4	18-18430R1	1	1	1	-	Quick Coupler Mount
5	18-18514	-	-	-	1	Quick Coupler Mount
6	25-18956	-	1	-	1	Multi-Coupling Plate - 4 Port Parking Station
7	25-18961	1	-	-	-	Multi-Coupling Plate - 5/6 Port Parking Station
8	25-19657	-	-	1	-	Multi-Coupling Plate - 2 Port Parking Station
9	25-19861	1	-	-	-	Multi-Coupling Plate - 5 Port - Fixed
10	25-19862	1	-	-	-	Multi-Coupling Plate - 5 Port - Mobile
11	25-19863	1	-	-	-	Multi-Coupling Plate - 5 Port - Cap
12	25-19864	-	1	-	1	Multi-Coupling Plate - 4 Port Fixed
13	25-19866	-	1	-	1	Multi-Coupling Plate - 4 Port Mobile
14	25-19867	-	1	-	1	Multi-Coupling Plate - 4 Port - Cap
15	25-19868	-	-	1	-	Multi-Coupling Plate - 2 Port - Fixed
16	25-19869	-	-	1	-	Multi-Coupling Plate - 2 Port - Mobile
17	25-19871	-	-	1	-	Multi-Coupling Plate - 2 Port - Cap
18	31-34040	5	4	2	4	Straight JIC x O-Ring
19	31-34150	5	4	2	4	Straight Thread Elbow 45° JIC x O-Ring (6802-8-8)
20	70-20611	4	-	-	-	5/16" Nyloc Hex Nut Gr 5 NC

1. Parking Stations are located on the angle frames or blades. Place the Cap in the Parking Stations when blade is in use. When disconnecting the blade, place the Cover on the Fixed Multi-Coupler and the Mobile Multi-Coupler in the Parking Station.
2. Apply a heavy duty silicone spray lubricant to pins to protect from corrosion.

### 5 Port Multi Coupler -HAHT 2-Stick



## Contact Us

---

As always, if you have any questions about your 3-5 Dozer or other products made by Grouser, feel free to contact us.

### **Grouser Products**

755 2nd Ave NW - West Fargo, ND 58078

**Phone:** 1-800-747-6182

**Fax:** 1-701-282-8131

**E-mail:** [grouser@grouser.com](mailto:grouser@grouser.com)

**Website:** [www.grouser.com](http://www.grouser.com)



## Improvements

---

Grouser Products Inc. is continually striving to improve its products. We reserve the right to change prices, specification, or equipment at any time without notice. We also reserve the right to make improvements or changes when it becomes practical and possible to do so without incurring any obligation to make changes or additions to the equipment sold previously.

## Warranty

---

Grouser Products warrants to the original purchaser of each item that the product be free from defects in material and workmanship under normal use and service for a period of two years from date of original retail delivery. If such equipment is found to be defective within two years, it is the obligation of Grouser Products under this warranty to repair or replace (exclusive of the cost of labor and transportation), any equipment or parts, in the judgment of Grouser Products to be defective in material or workmanship.

All equipment or parts claimed to be defective in material or workmanship must be made available for inspection at the place of business of a dealer authorized to handle the equipment covered by this warranty, or, upon request by Grouser Products, shipped to the Grouser Products factory in West Fargo, North Dakota. Grouser Products shall have no obligation to bear the cost of labor or transportation in connection with replacement or repair of any such defective parts in the setup process.

This warranty covers only defects in material and workmanship. It does not cover depreciation or damage caused by normal wear, accident, improper assembly, improper adjustments, improper maintenance including lack of proper lubrication, or improper use. Therefore, Grouser Products liability under this warranty shall not be effective or actionable unless the equipment is assembled, maintained and operated in accordance with the operating instructions accompanying the equipment. Grouser Products shall have no liability if the equipment has been altered or reworked without the written authorization of Grouser Products.

Grouser Products' parts, which are furnished under this warranty and properly installed, shall be warranted to the same extent as the original parts under this warranty if, and only if, such parts are found to be defective within the original warranty period covering the original equipment.

