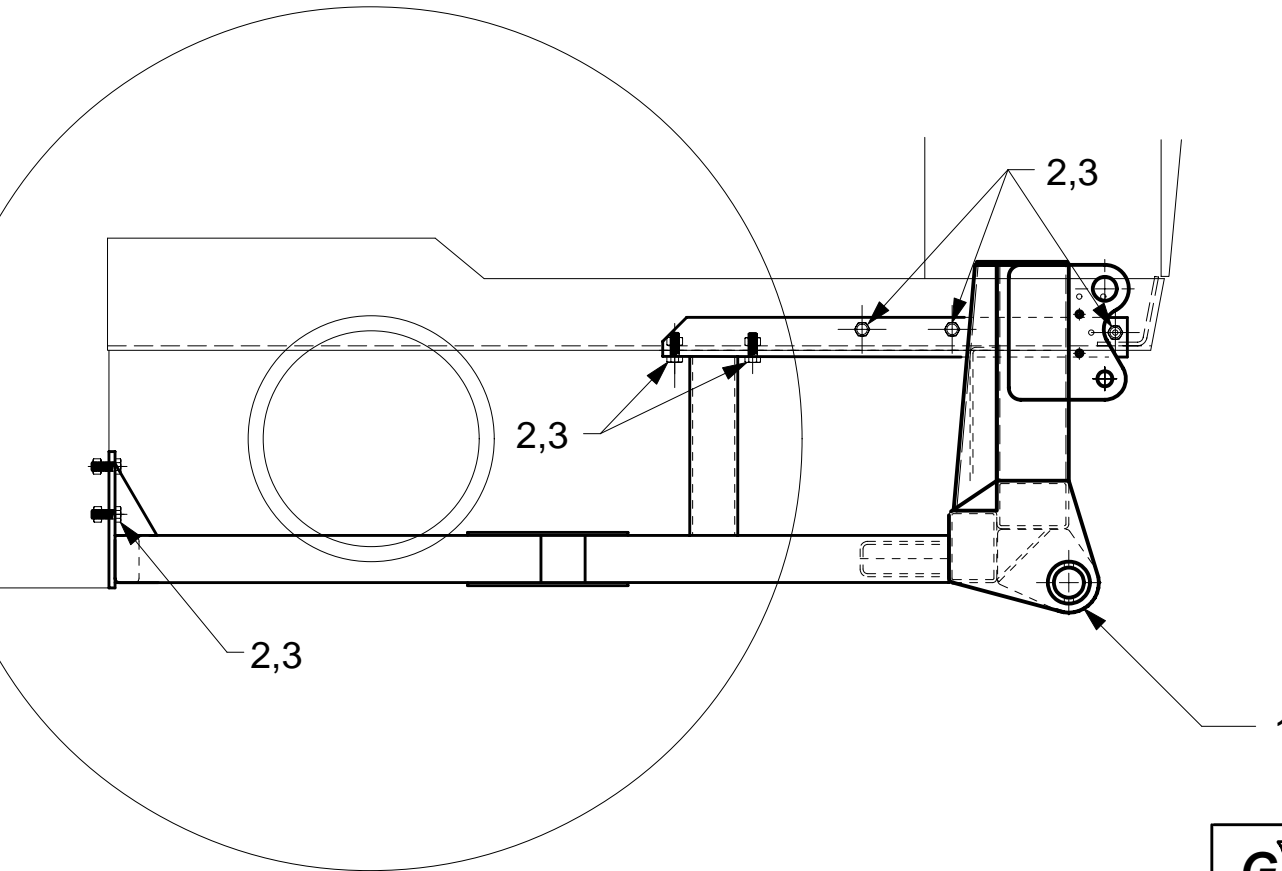



8652-CASE 9310/30 INSTALLATION			
ITEM	QTY.	PART NO.	DESCRIPTION
1	1	8613	UNDERCARRIAGE
2	18		3/4" UNC X 2.00 LG. CAPSCREW
3	18		3/4" UNC NUT
4			
5			
6			



INSTRUCTIONS:

1. Locate undercarriage as shown by lining up undercarriage holes with tractor mounting holes.
2. Install all capscrews loosely before tightening.

 GROUSER PRODUCTS BOX 545 WEST FARGO, N.D. 58078 PHONE 701 282-7710				
DRAWN BY	CHECKED BY	WHERE USED CASE 9310/30	SCALE 1:16	DATE 11/18/97
NOTICE: THIS DOCUMENT CONTAINS PROPRIETARY INFORMATION AND IT SHALL NOT BE USED OR REPRODUCED OR ITS CONTENTS DISCLOSED, IN WHOLE OR IN PART, WITHOUT THE PRIOR WRITTEN CONSENT OF GROUSER PRODUCTS, INC.				
TITLE MOUNTING INSTRUCTIONS			PART NO. 8652	

CAD DRAWING