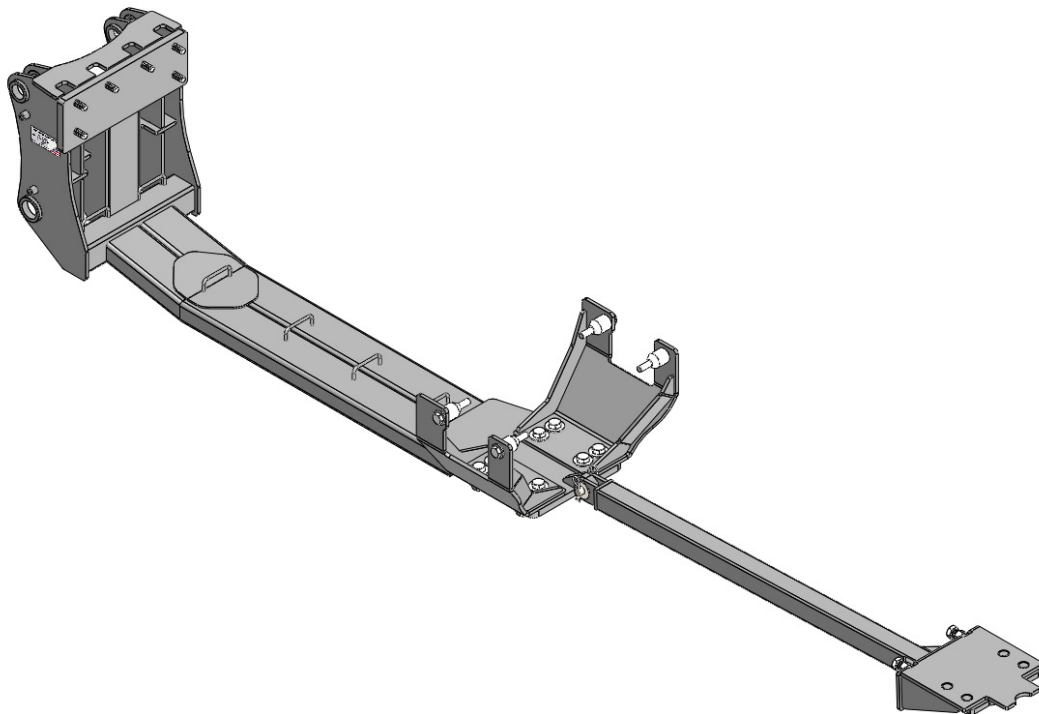




Agco DTB, Challenger MT600C,D & Massey 8600, 8700 Undercarriage Installation Instructions



For Models:

Agco - DT205B, DT225B, DT250B, DT275B

Challenger - MT645C&D, MT655C&D,
MT665C&D, MT675C&D

Massey - 8650, 8660, 8670, 8680, 8690, 8727,
8730, 8732, 8735, 8737

Purchase Date

Serial Number

Model Number

Tractor Model

Dealer

To The Owner

This manual contains information concerning the installation of the undercarriage. You have purchased dependable, long lasting equipment, but only by proper care and operation can you expect to receive the performance and long service built into our products. Please have all operators read this manual carefully and keep the manual available for ready reference. If you have any questions or concerns, contact Grouser Products.

Undercarriage Installation

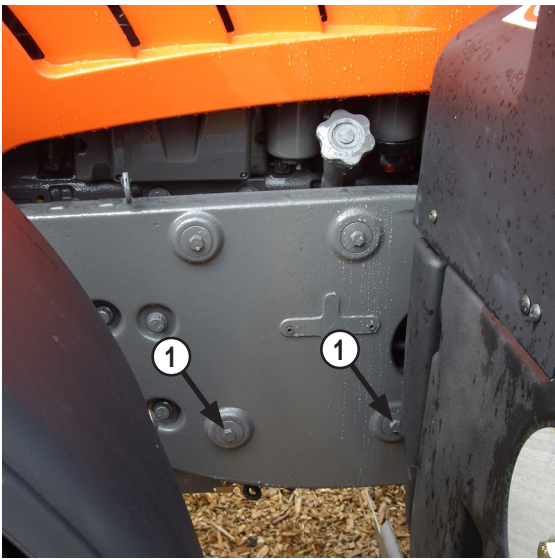
Caution:

- Always use caution when working around any equipment.
- Always wear safety glasses.
- Follow tractor manufacturer's safety guidelines when installing this product.
- Use paint where necessary to prevent rust.
- Do not modify or permit anyone else to modify or alter the equipment and its components without first consulting Grouser Products.

Note:

- When installing hardware, only finger tighten until all hardware is in place.
- A full diagram of the assembly with the full list of parts is on pages 4-5.
- Tractor frame not shown in some diagrams for clarity.
- Unstrap and remove any components that are attached for shipping.
- Read all instructions prior to performing installation.

1. Remove the weights and weight carrier from the front of the tractor if necessary.



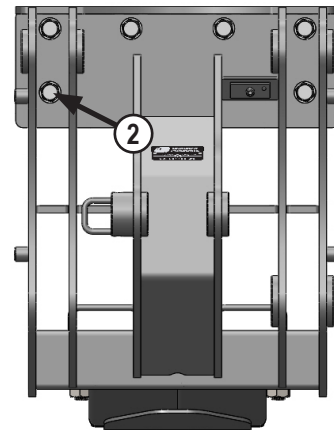
2. If tractor doesn't have loader brackets, remove the bottom 2 plugs from the holes on each side of the tractor behind the front tires (1).
3. If tractor has loader brackets, remove the bottom 2 bolts from each side.

4. With no loader, use the supplied spacers between the side rail and the tractor frame when installing the side rails in Step #5.

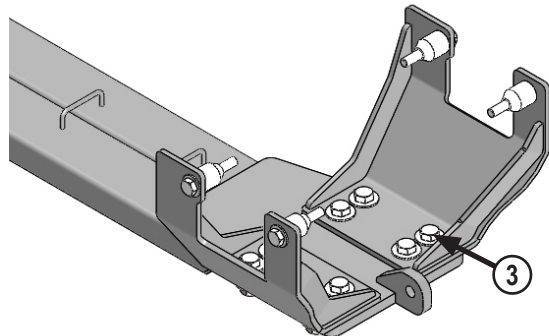
5. Install the side rails with 2 - 20mm x 130mm bolts and 2 - 3/4" flat washers on each side in the location where the plugs or bolts were removed in Step #2 or #3.

6. Position the undercarriage under the tractor and center with the frame of the tractor.

7. Raise the undercarriage until the holes on the undercarriage line up with the tractor frame holes.



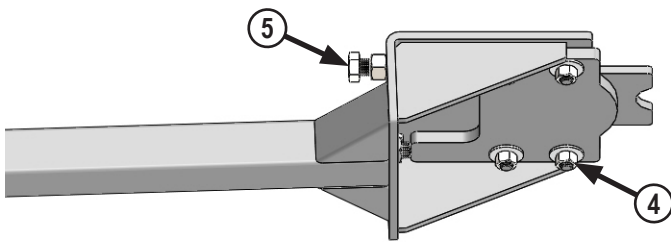
8. Attach the front of the undercarriage to the front of the tractor nose casting with 6 - 20mm x 70mm and 6 - 3/4" hardened flat washers (2).



9. Attach the rear of the undercarriage to the side rails with 4 - 1" bolts, 8 - 1" flat washers, and 4 - 1" nuts on each side (3).

10. Torque the front 20mm bolts to 432 ft-lbs., the 20mm bolts on the side rails to 432 ft-lbs., and then the 1" bolts to 903 ft-lbs.

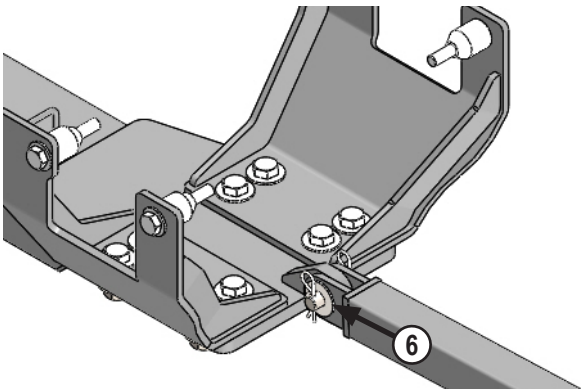
11. Pull the drawbar out to allow room for installing the push pole.



12. Attach the push plate to the rear of the push pole with 4 - 3/4" flat washers and 4 - 3/4" nuts (4). The round edge of the push plate should be towards the open back of the push pole.

13. Install 2 - 1" x 3" bolts and 2 - 1" nuts at the rear of the push pole (5). Only screw in the bolts a few turns. Verify that the 1" nuts are not tight against the push pole so the 1" bolts can be adjusted after the push pole is installed.

14. Lift the rear of the push pole and rest the rear plate on top of the drawbar bracket.



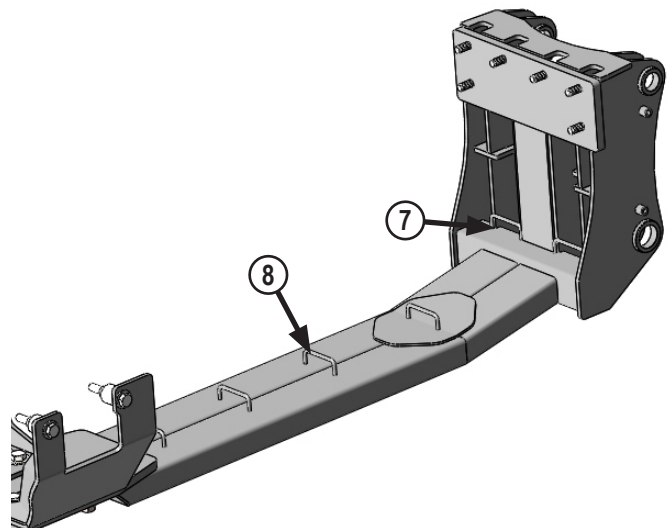
15. Attach the front of the push pole to the rear of the undercarriage with a pin, 2 - 1" washers, and 2 - pin clips (6).

16. Evenly screw in the 1" bolts at the rear of the push pole to push the push plate tight against the tractor casting. Torque the 1" bolts to 90-95 ft-lbs.

17. Tighten the 1" nuts up tight against the push pole. The nuts lock the bolts in place.

18. Torque the 3/4" nuts to 257 ft-lbs.

19. Return the drawbar to the original position.



20. Route the hoses from the front through the hose loops at the front of the undercarriage (7).

21. Continue to route the hoses through the hose loops on the undercarriage (8).

22. Route the hoses to the back of the tractor and plug the hoses into the open SCV's at the rear of the tractor.

23. Protect the hoses around sharp corners and moving objects. Use zip ties to hold the hoses in place.

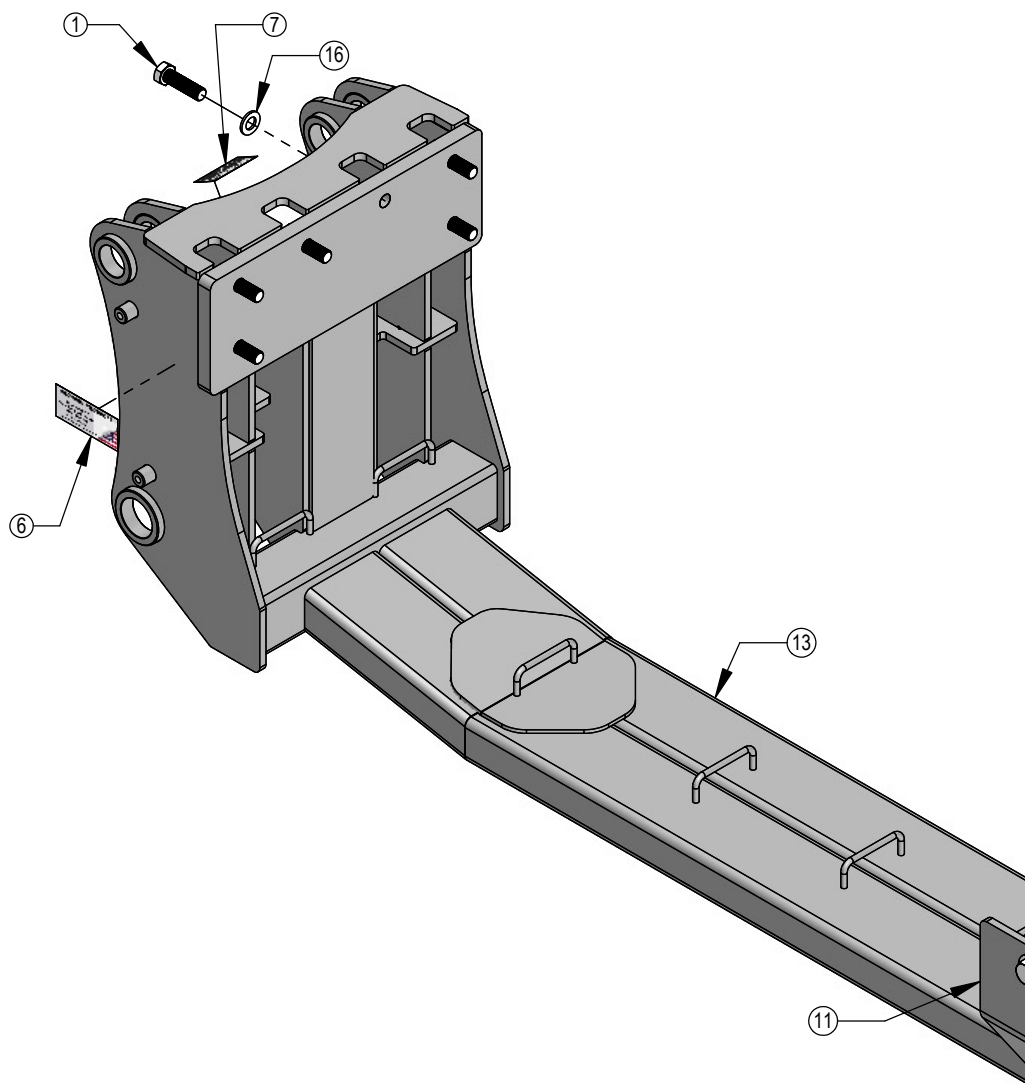
Warning: Fully oscillate the blade angle, tilt, steering and suspension to check for adequate clearance.

Maintenance

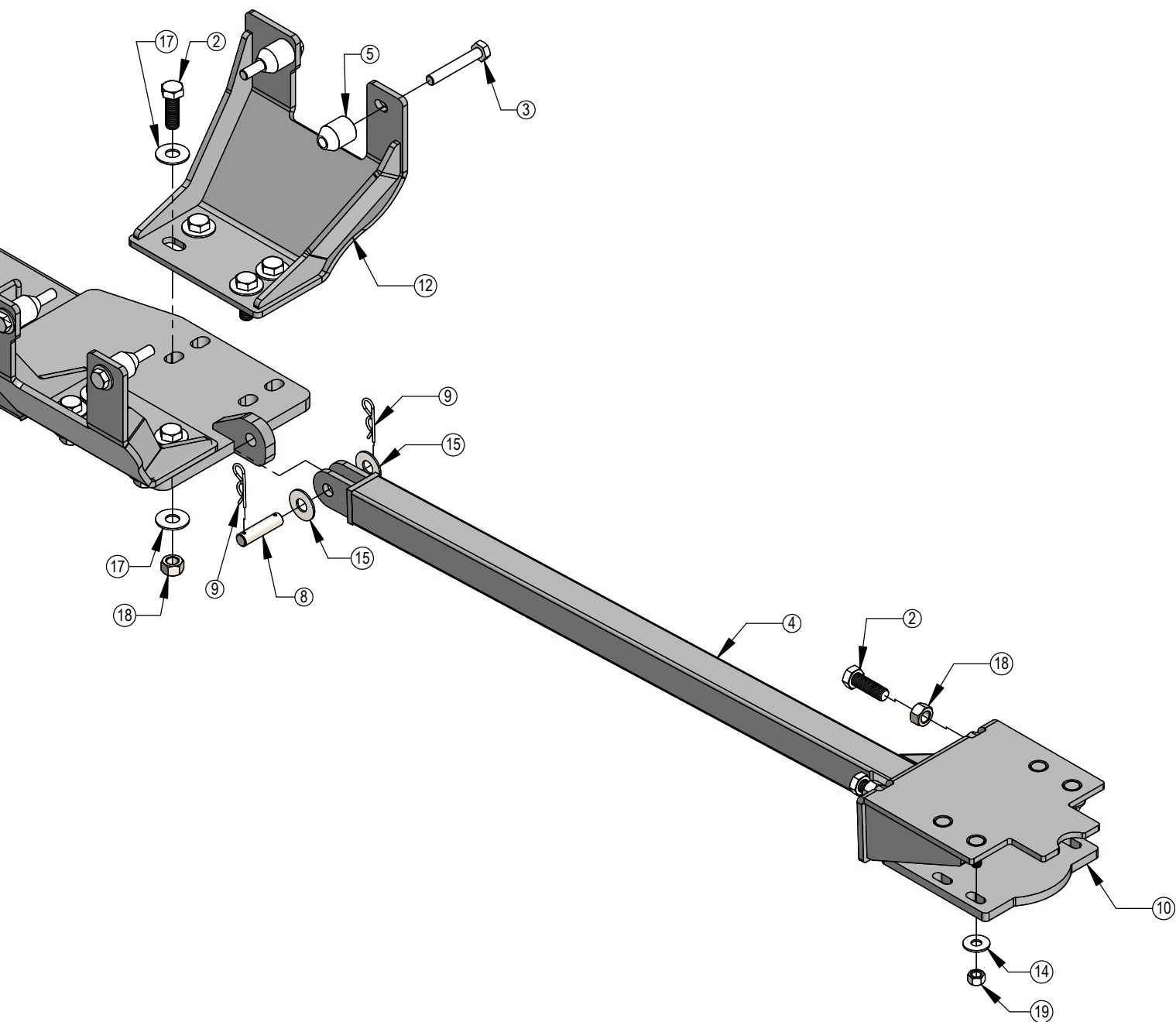
1. After first 8 hours of use, re-torque all bolts. Check to make sure the 1" bolts at the back of the push pole are tight against the push plate as in Step #16.

2. Check all fasteners regularly to ensure proper operation of equipment.

3. Inspect all equipment for existing or potential damages every 10 hours or less.



ITEM NO.	QTY.	PART NO.	DESCRIPTION
1	6	16-1876	20mm x 2.5mm x 70mm Gr. 10.9 Hex Bolt
2	10	16-20562	1" x 3" Hex Bolt Gr.8 NC
3	4	16-2490	
4	1	17-13895R1	Push Pole Weld
5	4	19-13899	Spacer
6	1	27-18887	Grouser Name Plate Decal
7	1	27-9506R1	Not For Pushing or Pulling Decal
8	1	43-16789	1" x 4" Pin With Holes
9	2	43-7767	Cylinder Pin Clip
10	1	44-13896	Plate, Push
11	1	46-13885-L	Side Plate Weld
12	1	46-13885-R	Side Plate Weld
13	1	54-40590	Undercarriage Weld
14	8	57-20747	3/4" Flat Washer
15	2	57-20749	1" Flat Washer
16	6	57-20757	3/4" Flat Washer - 1-1/2" OD
17	16	57-20819	1" Flat Washer Heavy Duty Gr 8 (USS)
18	10	70-20589	1" Hex Nut Gr 5 NC
19	4	70-20607	3/4" Center Lock Hex Nut NC



Notes

Notes

Contact Us

As always, if you have any questions about your undercarriage or other products made by Grouser, feel free to contact us.

Grouser Products

755 2nd Ave NW - West Fargo, ND 58078

Phone: 1-800-747-6182

Fax: 1-701-282-8131

E-mail: grouser@grouser.com

Website: www.grouser.com

Improvements

Grouser Products Inc. is continually striving to improve its products. We reserve the right to change prices, specification, or equipment at any time without notice. We also reserve the right to make improvements or changes when it becomes practical and possible to do so without incurring any obligation to make changes or additions to the equipment sold previously.

Warranty

Grouser Products warrants to the original purchaser of each item that the product be free from defects in material and workmanship under normal use and service for a period of two years from date of original retail delivery. If such equipment is found to be defective within two years, it is the obligation of Grouser Products under this warranty to repair or replace (exclusive of the cost of labor and transportation), any equipment or parts, in the judgment of Grouser Products to be defective in material or workmanship.

All equipment or parts claimed to be defective in material or workmanship must be made available for inspection at the place of business of a dealer authorized to handle the equipment covered by this warranty, or, upon request by Grouser Products, shipped to the Grouser Products factory in West Fargo, North Dakota. Grouser Products shall have no obligation to bear the cost of labor or transportation in connection with replacement or repair of any such defective parts in the setup process.

This warranty covers only defects in material and workmanship. It does not cover depreciation or damage caused by normal wear, accident, improper assembly, improper adjustments, improper maintenance including lack of proper lubrication, or improper use. Therefore, Grouser Products liability under this warranty shall not be effective or actionable unless the equipment is assembled, maintained and operated in accordance with the operating instructions accompanying the equipment. Grouser Products shall have no liability if the equipment has been altered or reworked without the written authorization of Grouser Products.

Grouser Products' parts, which are furnished under this warranty and properly installed, shall be warranted to the same extent as the original parts under this warranty if, and only if, such parts are found to be defective within the original warranty period covering the original equipment.

