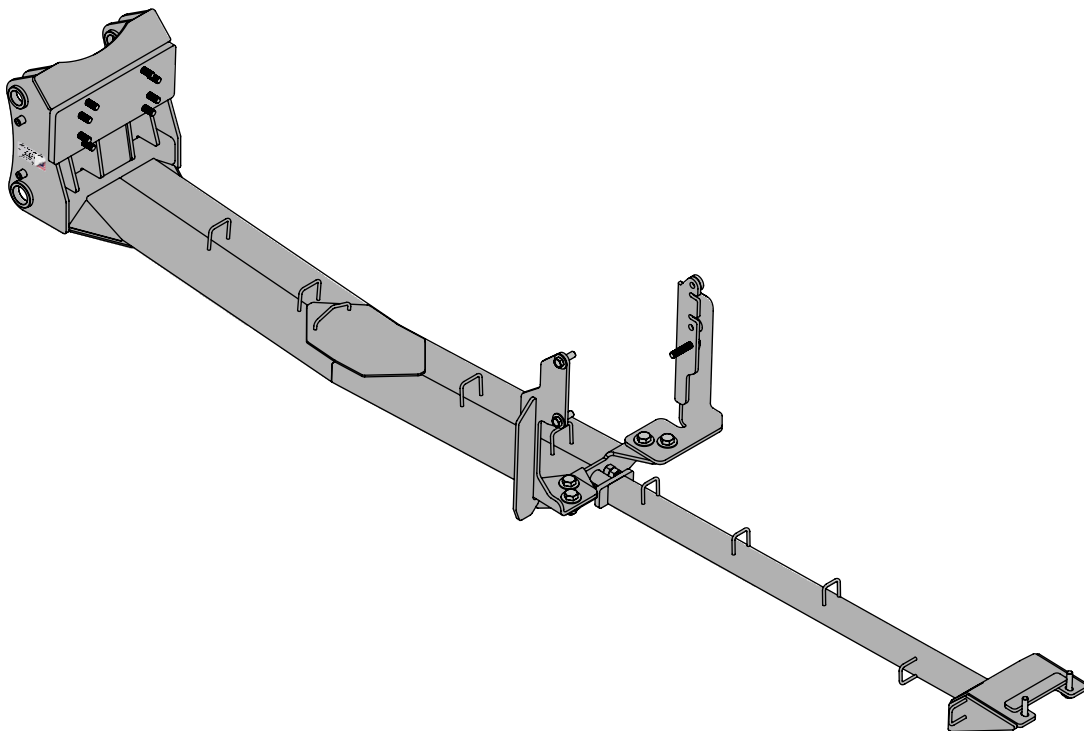




# ***Case Magnum - Tier 4B***

## ***Undercarriage Installation Instructions***



**For Models:**

**Case Magnum Mid Frame Standard Axle (T4B):**

180, 200, 220, 240

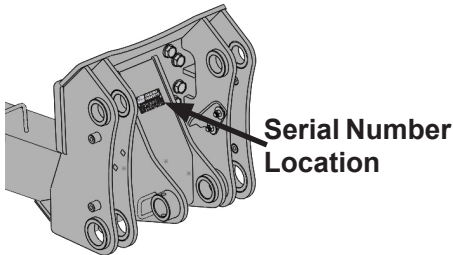
Purchase Date
Serial Number
Model Number
Tractor Model
Dealer

# To The Owner

This manual contains information concerning the installation of the undercarriage. You have purchased dependable, long lasting equipment, but only by proper care and operation can you expect to receive the performance and long service built into our products. Please have all operators read this manual carefully and keep the manual available for ready reference. If you have any questions or concerns, contact Grouser Products.

## Caution:

- Always use caution when working around any equipment.
- Always wear safety glasses.
- Follow tractor manufacturer's safety guidelines when installing this product.
- Use paint where necessary to prevent rust.
- Do not modify or permit anyone else to modify or alter the equipment and its components without first consulting Grouser Products.



## Note:

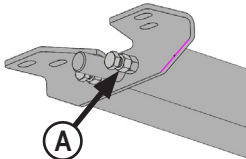
- When installing hardware, only finger tighten until all hardware is in place.
- A full diagram of the assembly with the full list of parts is on pages 4-5.
- Unstrap and remove any components that are attached for shipping.
- Read all instructions prior to performing installation.



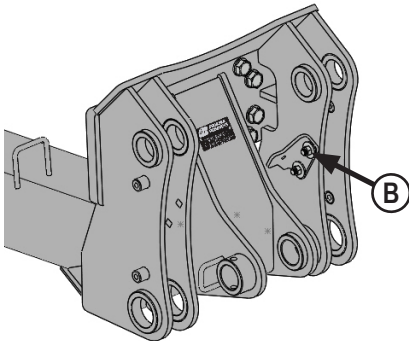
To ensure the safety of those working under and around the machine, apply parking brake, remove key from ignition, and block tires before working on the machine.

## Installation

1. Remove weights and weight carrier from front of tractor if necessary.



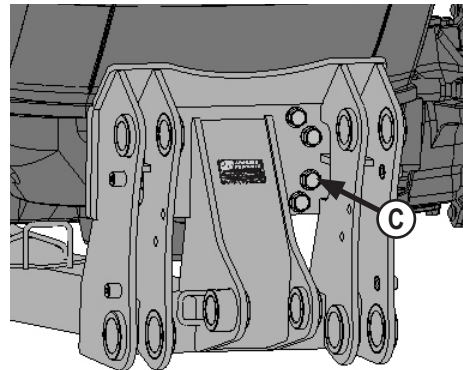
2. Install 2 - 1" x 3" bolts and 2 - 1" nuts at rear of undercarriage (A). Turn 1" bolts in. The bolts and nuts will be adjusted after push pole is installed.



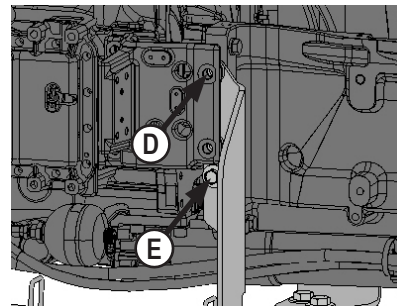
3. Remove hose clamp brackets (B) from front of undercarriage mount to gain access to front bolts.
4. Position the undercarriage under tractor and center on the frame of the tractor.

**NOTE: When lifting the undercarriage, watch for any potential pinching of hoses or any other components to prevent damage.**

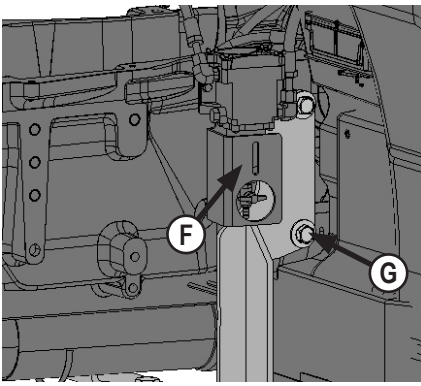
5. Raise undercarriage until holes on undercarriage line up with front tractor frame holes.



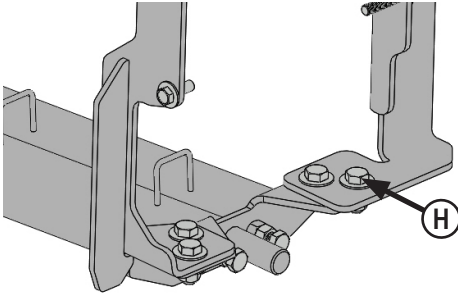
6. Attach front of undercarriage to front of tractor with 8 - 20mm x 70mm bolts and 8 - 3/4" hardened flat washers (C).



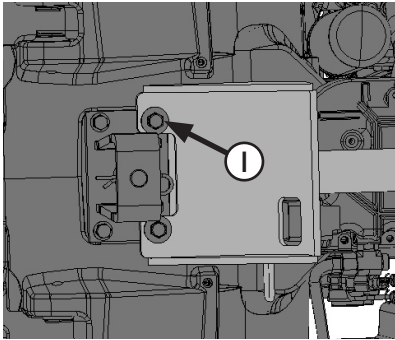
7. Remove ground boss from right side of tractor. The ground boss will be reinstalled with right bracket.
8. Remove 2 bolts and spacer from exhaust bracket on right side of tractor. Slide right bracket between tractor frame and original bracket. Use original hardware to attach exhaust bracket and new side bracket to tractor frame (D).
9. Install a 20mm x 100mm with a 3/4" flat washer and ground boss from Step #7 in bottom right bracket hole (E).



10. Remove and discard 2 bolts attaching water separator bracket (F) to left side of tractor frame, if necessary.
11. Attach left bracket with water separator to tractor frame with 2 - 20mm x 60mm bolts and 2 - 3/4" flat washers (G).



12. Attach side brackets to undercarriage 4 - 1" x 2-1/2" bolts, 8 - 1" flat washers and 4 - 1" nuts (H).
13. Pull drawbar out to allow room for installing push pole.
14. Remove and discard front 2 bolts from front of drawbar pivot bracket.



15. Position push pole under tractor.
16. Slide front of push pole onto rod at end of undercarriage.
17. Raise rear of push pole up and attach to drawbar pivot bracket with 2 - 18mm x 80mm bolts and 2 - 3/4" flat washers (I).

18. Torque front undercarriage 20mm bolts (C) to 432 ft-lbs.
  19. Torque side bracket 20mm bolts (D, E & G) to 432 ft-lbs.
  20. Torque 1" bolts attaching side brackets to undercarriage (H) to 909 ft-lbs.
- NOTE: Verify rear of push pole is pushing against drawbar pivot bracket.**
21. Evenly unscrew 1" bolts at rear of undercarriage until tight against push pole. Torque 1" bolts to 90-95 ft lbs (A).
  22. Tighten 1" nuts against undercarriage. The nuts lock bolts in place.
  23. Torque rear 18mm bolts (I) to 405 ft-lbs.
  24. Reattach the hose clamp bracket (B) that was removed in Step #3.
  25. Torque 1/2" nuts (B) to 75 ft-lbs.
  26. Route hoses through hose loops on undercarriage and push pole.
  27. Route hoses to back of tractor and plug into open SCV's at rear of tractor.

**Note: The installer is responsible to route hoses in a practical manner, to protect the hoses around sharp corners and moving objects, and secure hoses.**

**Warning: Fully oscillate the blade angle, tilt, steering, suspension and rear 3-point to check for adequate clearance.**

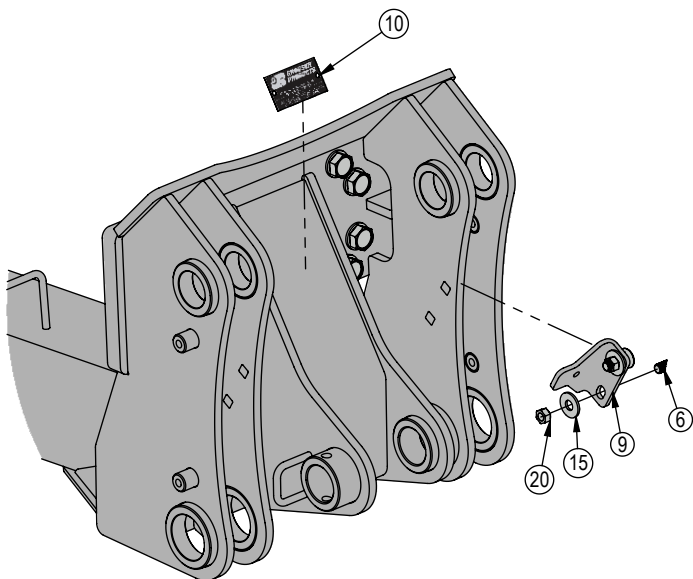
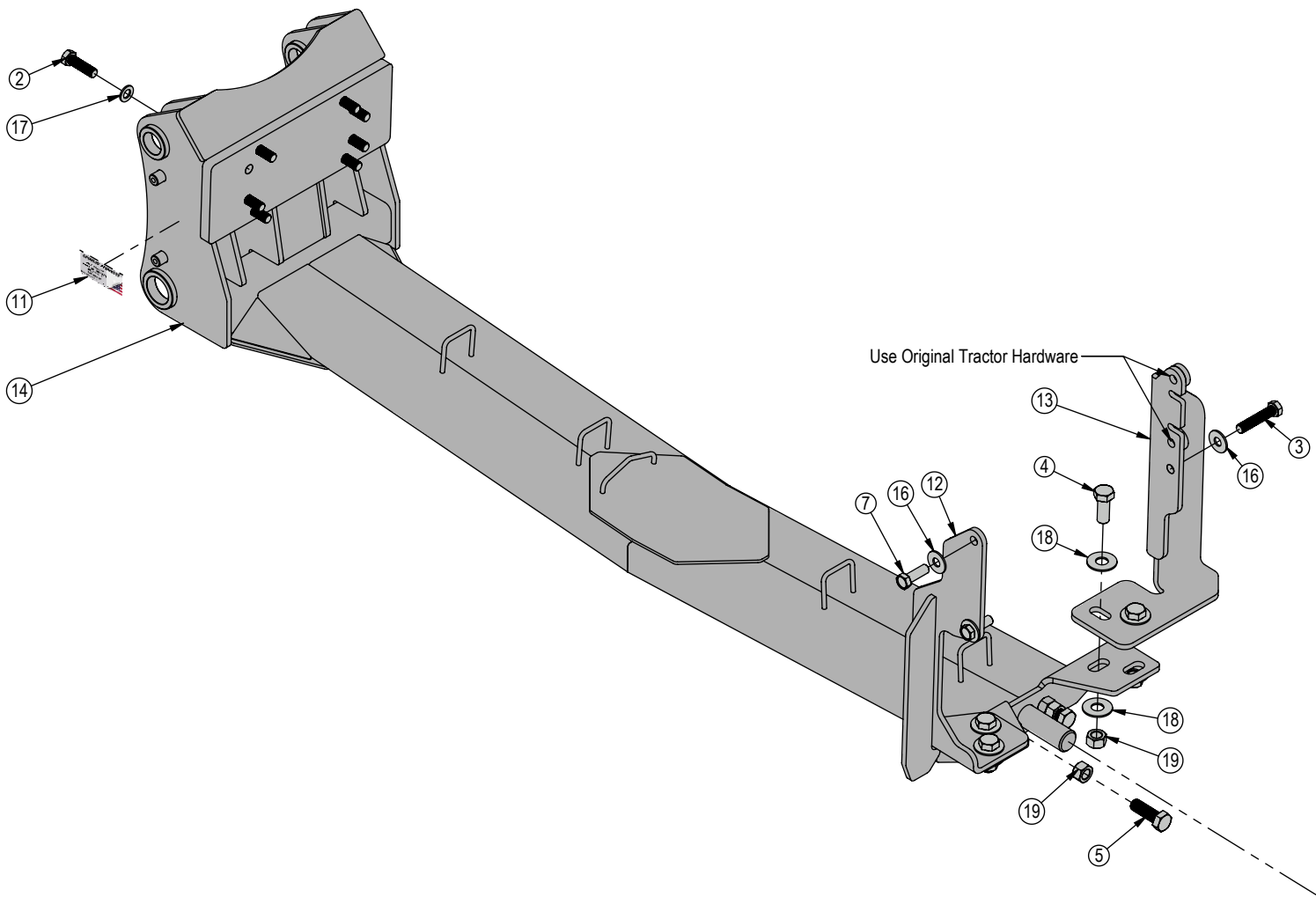
**The minimum clearance between any part on blade and front tires when blade is fully angled, should be 3". If more clearance is necessary between the blade and front tires, call Grouser Products.**

## Assembling Lift Components

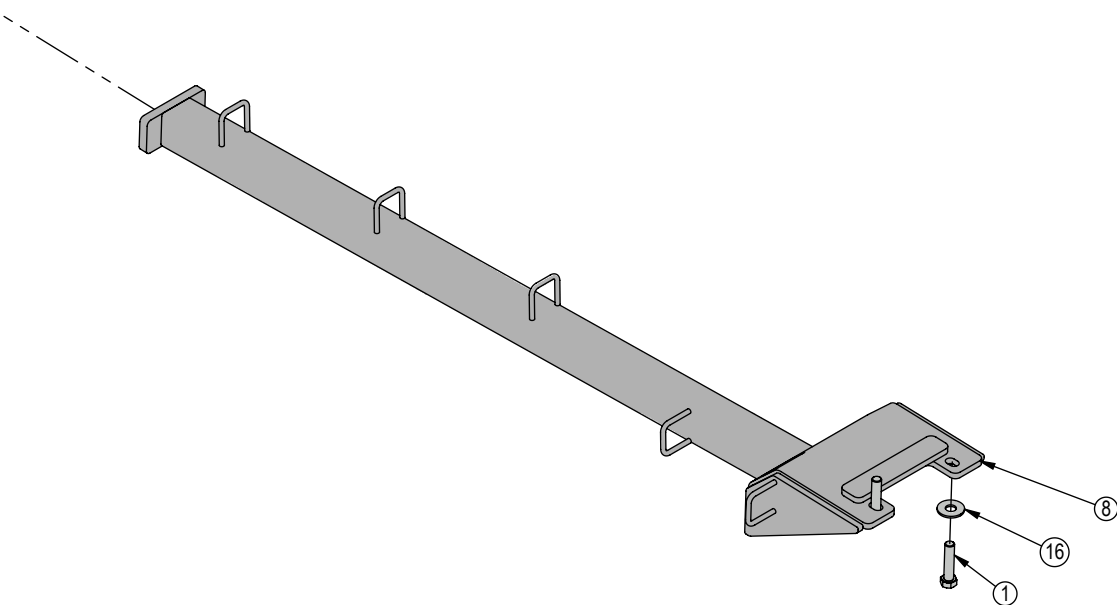
1. Refer to the Blade Owner's Manual & Parts Book for instructions on how to assemble the lift components.

## Maintenance

1. After first 8 hours of use, re-torque all bolts.
2. Check all fasteners regularly to ensure proper operation of equipment.
3. Inspect all equipment for existing or potential damages every 10 hours or less.



ITEM NO.	QTY.	PART NO.	DESCRIPTION
1	2	16-1815080	18mm x 1.50mm x 80mm Metric Hex Bolt Gr 10.9 Fine
2	8	16-1876	20mm x 2.5mm x 70mm Hex Bolt Gr 10.9
3	1	16-1877	20mm x 2.5mm x 100mm Hex Bolt Gr. 10.9
4	4	16-20560	1" x 2-1/2" Hex Bolt Gr 8 NC
5	2	16-20562	1" x 3" Hex Bolt Gr 8 NC
6	2	16-21126	1/2" x 1-1/2" Carriage Bolt Gr 5 NC
7	2	16-2487	20mm x 2.5mm x 60mm Hex Bolt Gr. 10.9
8	1	17-17635	Push Pole
9	1	18-42691	Hose Bracket
10	1	NA	Grouser Dozer Metal Serial Tag
11	1	27-18887	Grouser Name Plate Decal
12	1	44-17625	Side Bracket Weld, Left
13	1	44-17634	Side Plate Weld, Right
14	1	54-43250	Standard Axle, UC Weld
15	2	57-20744	1/2" Flat Washer
16	5	57-20747	3/4" Flat Washer
17	8	57-20757	3/4" Flat Washer - 1-1/2" OD
18	8	57-20819	1" Flat Washer Heavy Duty Gr 8
19	6	70-20599	1" Hex Nut Gr 8 NC
20	2	70-20604	1/2" Center Lock Hex Nut



# Notes

---

# Notes

---

# Contact Us

---

As always, if you have any questions about your undercarriage or other products made by Grouser, feel free to contact us.

## **Grouser Products**

755 2nd Ave NW - West Fargo, ND 58078

**Phone:** 1-701-282-7710

**Fax:** 1-701-282-8131

**E-mail:** [info@grouser.com](mailto:info@grouser.com)

**Website:** [www.grouser.com](http://www.grouser.com)

## Improvements

---

Grouser Products Inc. is continually striving to improve its products. We reserve the right to change prices, specification, or equipment at any time without notice. We also reserve the right to make improvements or changes when it becomes practical and possible to do so without incurring any obligation to make changes or additions to the equipment sold previously.

## Warranty

---

Grouser Products warrants to the original purchaser of each item that the product be free from defects in material and workmanship under normal use and service for a period of two years. If such equipment is found to be defective within two years, it is the obligation of Grouser Products under this warranty to repair or replace (exclusive of the cost of labor and transportation), any equipment or parts, in the judgment of Grouser Products to be defective in material or workmanship.

All equipment or parts claimed to be defective in material or workmanship must be made available for inspection at the place of business of a dealer authorized to handle the equipment covered by this warranty, or, upon request by Grouser Products, shipped to the Grouser Products factory in West Fargo, North Dakota. Grouser Products shall have no obligation to bear the cost of labor or transportation in connection with replacement or repair of any such defective parts in the setup process.

This warranty covers only defects in material and workmanship. It does not cover depreciation or damage caused by normal wear, accident, improper assembly, improper adjustments, improper maintenance including lack of proper lubrication, or improper use. Therefore, Grouser Products liability under this warranty shall not be effective or actionable unless the equipment is assembled, maintained and operated in accordance with the operating instructions accompanying the equipment. Grouser Products shall have no liability if the equipment has been altered or reworked without the written authorization of Grouser Products.

Grouser Products' parts, which are furnished under this warranty and properly installed, shall be warranted to the same extent as the original parts under this warranty if, and only if, such parts are found to be defective within the original warranty period covering the original equipment.

