



John Deere 9RX Ag Pro Undercarriage Installation Instructions

For Models:

John Deere: 9RX 710, 9RX 770, 9RX 830

Model Year 2025-Current

Purchase Date
Serial Number
Model Number
Tractor Model
Dealer

To The Owner


This manual contains information concerning the installation of the undercarriage. You have purchased dependable, long lasting equipment, but only by proper care and operation can you expect to receive the performance and long service built into our products. Please read this manual carefully and keep the manual available for ready reference. If you have any questions or concerns, contact Grouser Products.

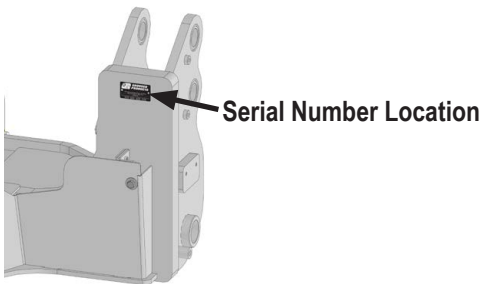
Caution:

- Always use caution when working around any equipment.
- Always wear safety glasses.
- Follow tractor manufacturer's safety guidelines when installing this product.
- Use paint where necessary to prevent rust.
- Do not modify or permit anyone else to modify or alter the equipment and its components without first consulting Grouser Products.
- Operate within your own capabilities. Recommended operating speed is 3-5 MPH (5-8 km/h).

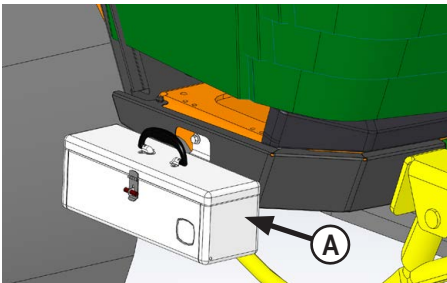
Note:

- Read all instructions prior to performing installation.
- When installing hardware, only finger tighten until all hardware is in place.
- A full diagram of the assembly with the full list of parts is on pages 8-9.
- Tractor frame not shown in some diagrams for clarity.
- Unstrap and remove any components that are attached for shipping.

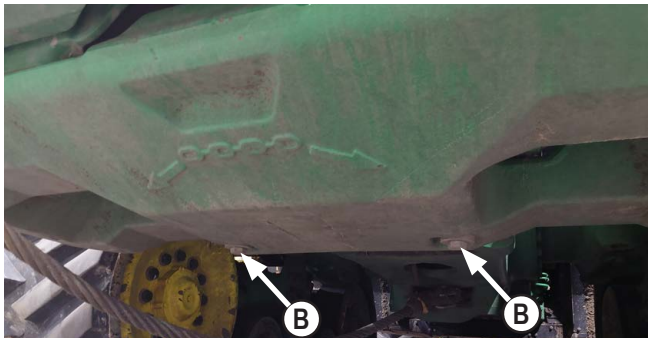
 To ensure the safety of those working under and around the machine, apply parking brake, and remove key from ignition before working on the machine.



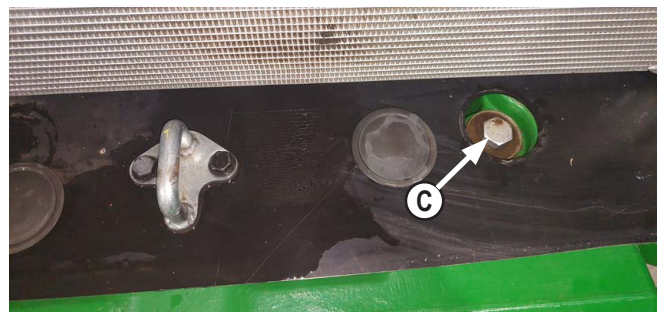
Pre-Installation



1. Remove toolbox and bracket (A) from right side of tractor. Toolbox, bracket and hardware will be reinstalled in a later step.



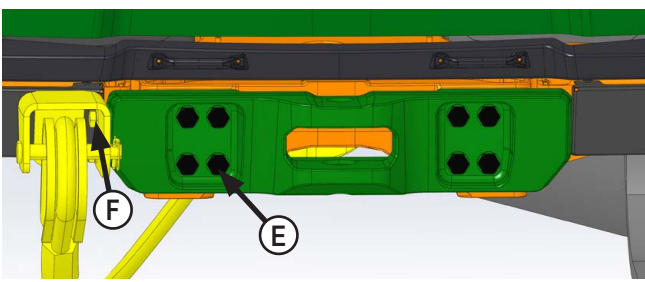
2. If applicable, remove bottom 2 bolts from front weight casting (B).



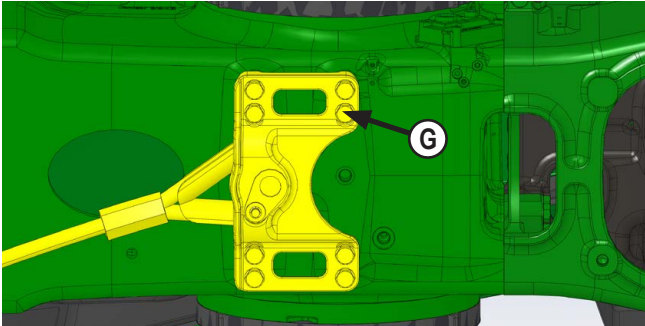
3. If applicable, remove hole access caps. Support front weight casting and remove top 2 bolts from weight casting (C).



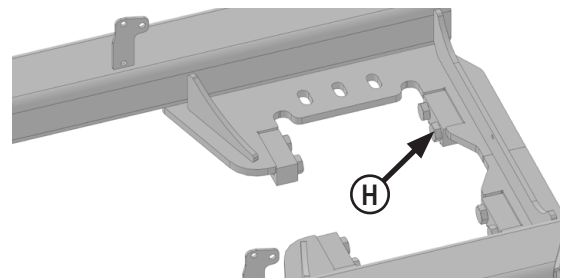
4. Reinstall the top 2 hole access caps (D).



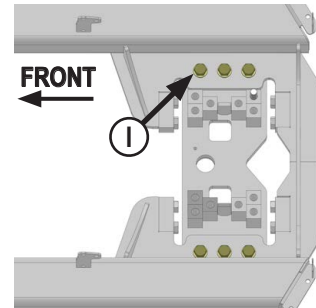
5. If applicable, remove front casting (E), tow cable and tow cable bracket (F). Tow cable, tow cable bracket, and hardware will be reinstalled in a later step.



6. If applicable, remove tow cable and tow cable bracket from underneath front axle (G). Keep tow cable pin and retainer hardware to reinstall tow cable in a later step. Bracket will not be reused.



7. Completely thread 8 - 1" x 2" adjustment bolts (H) at rear of undercarriage with heads facing towards each other. The bolts will be adjusted after undercarriage is installed.



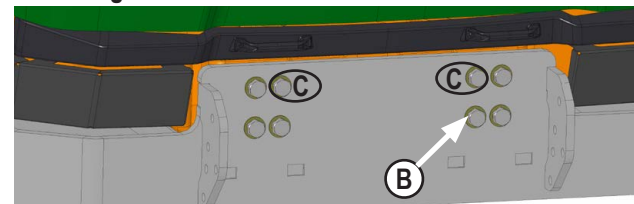
8. Attach tow cable bracket to bottom rear of undercarriage with 6 - 1" x 3" bolts, 12 - 1" hardened washers and 6 - 1" nuts (I). Install bolts from the top. Pin hole towards front. Tighten nuts until tow cable bracket is snug against bottom of undercarriage.

Undercarriage Installation



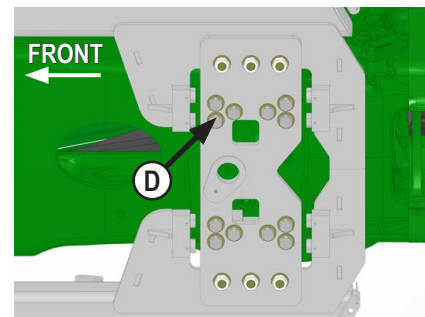
1. For easier installation, remove hose cover from each side of undercarriage (A). If cover is not removed, watch carefully while lifting undercarriage into place.
2. Place undercarriage on jacks and position under tractor and center on frame of tractor. Lift undercarriage until holes of undercarriage line up with holes in tractor frame.

NOTE: When lifting undercarriage, watch for any potential pinching of hoses or any other components to prevent damage.

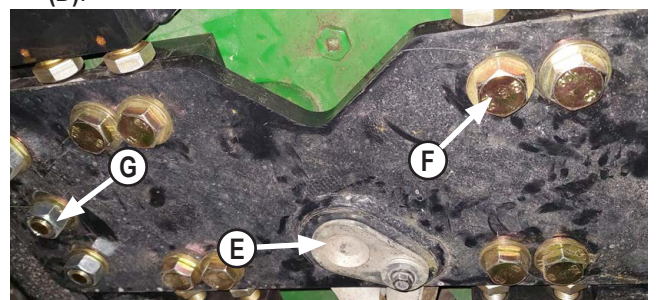


3. Attach front of undercarriage to front of tractor with 8 - 24mm x 90mm bolts and 8 - 1" hardened washers (B). Finger tighten only.
4. Tighten top inner horizontal bolts (C) until front of undercarriage is tight against tractor frame.

CAUTION: Support suspended undercarriage with jacks stands prior to working under undercarriage.



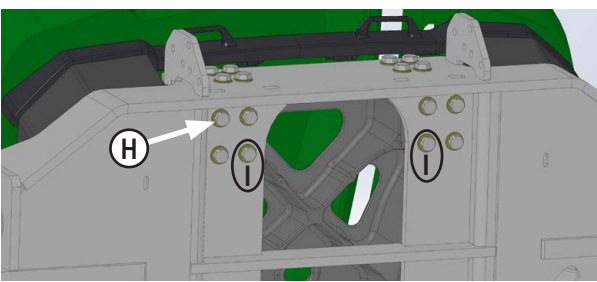
5. Attach tow cable bracket to bottom side of tractor frame with 12 - 24mm x 170mm bolts and 12 - 1" hardened washers (D).



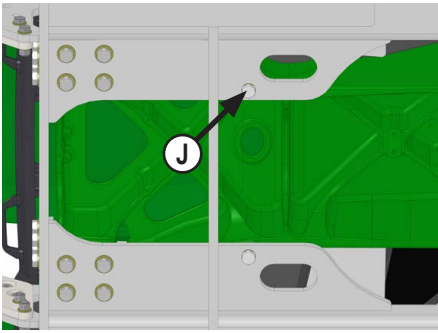
6. Install tow cable pin with original hardware into tow cable bracket (E).
7. Torque rear tow cable bracket vertical 24mm bolts (F) to 778 ft-lbs.

NOTE: Only 8 of 12 vertical bolts are shown. Use all 12 vertical bolts and torque all 24mm vertical bolts.

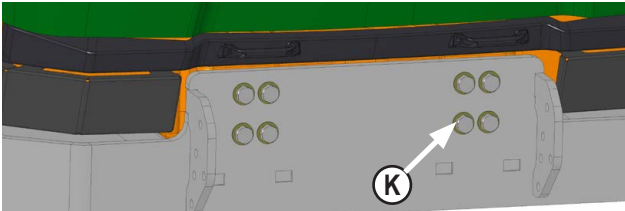
8. Loosen nuts (G) 1 turn to allow undercarriage to move while tightening front hardware.



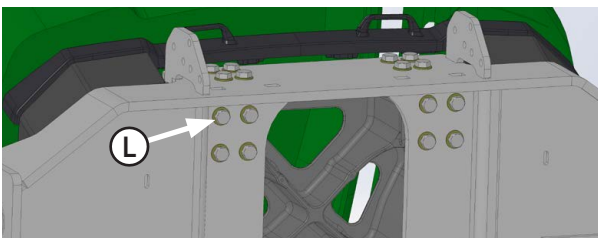
9. Attach bottom of undercarriage to bottom of tractor with 8 - 24mm x 100mm bolts and 8 - 1" hardened washers (H). Finger tighten only.
10. Tighten rear inner vertical bolts (I) until bottom of undercarriage is tight against tractor frame.



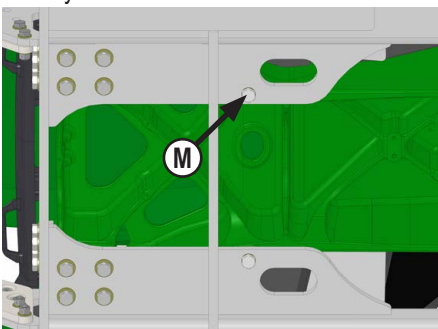
11. Install 2 - 20mm x 150mm bolts and 2 - 3/4" Heavy Duty washers to bottom of tractor (J).



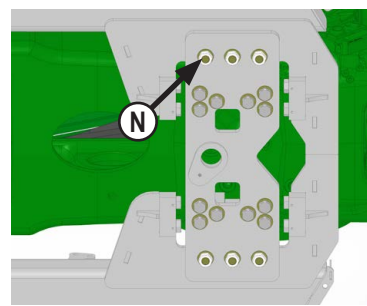
12. Torque front horizontal 24mm bolts (K) to 250 ft-lbs. Start with inner 4 bolts first and then outer bolts.



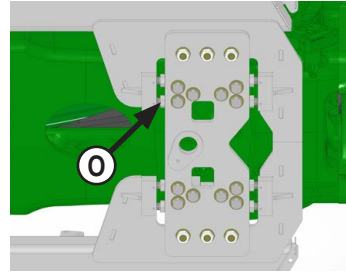
13. Torque front vertical 24mm bolts (L) to 250 ft-lbs. Start with inner 4 bolts first and then do outer bolts.
14. Repeat Steps # 12 and 13 and torque bolts to 500 ft-lbs, respectively.
15. Repeat Steps # 12 and 13 and torque bolts to 778 ft-lbs, respectively.



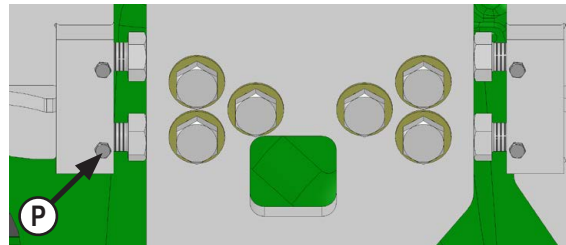
16. Torque vertical 20mm bolts (M) top 432 ft-lbs.



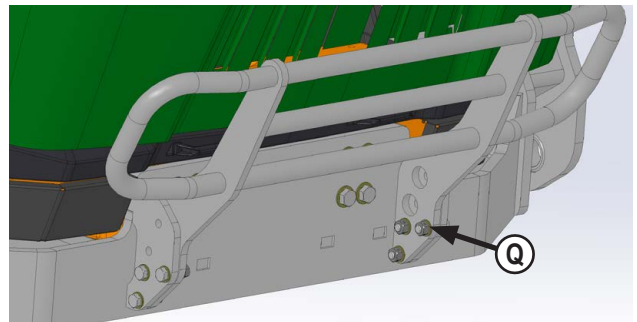
17. Torque rear vertical tow cable bracket 1" bolts (N) to 903 ft-lbs.



18. Unscrew 1" x 2" bolts (O) at rear of undercarriage until tight against tow cable bracket. Torque 1" bolts to 200 ft-lbs.



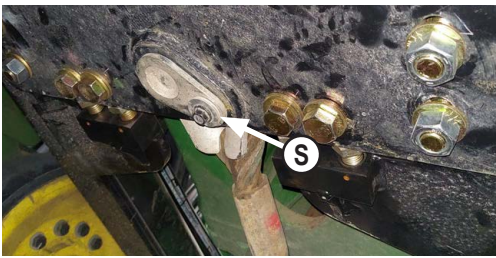
19. Install 2 - 5/16" x 3/4" bolts (P) into blocks at rear of undercarriage to lock each 1" x 2" bolt in place. Torque 5/16" bolts to 19 ft-lbs.



20. Attach grill guard to front of undercarriage with 6 - 3/4" x 2-3/4" bolts, 12 - 3/4" hardened washers and 6 - 3/4" nuts (Q).
21. Torque the 3/4" bolts (O) to 257 ft-lbs.



22. Attach front tow bracket to front of undercarriage with original bolts and new 2 - 20mm nuts (R).



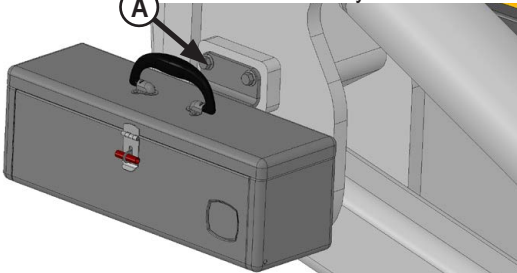
23. Install rear tow cable to new tow cable bracket with original pin and pin retaining hardware (S).



24. Attach front tow cable to tow bracket with original hardware (T).

Assembling Lift Components

Refer to the Owner's Manual & Lift System Parts Book for instructions on how to assemble the lift components.

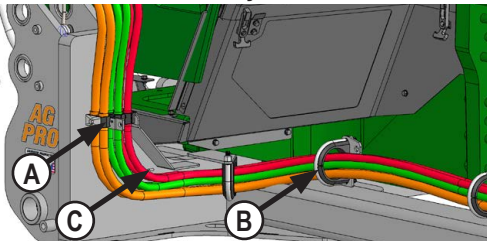


1. After lift system is installed, reinstall toolbox (A) on right side of undercarriage with original toolbox bracket and hardware.

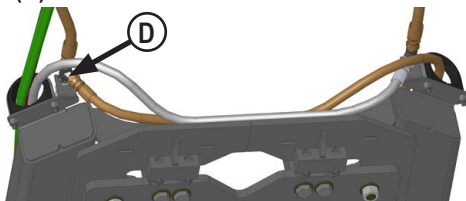
Hose Routing

NOTE: The quantity of hoses may vary depending on blade system.

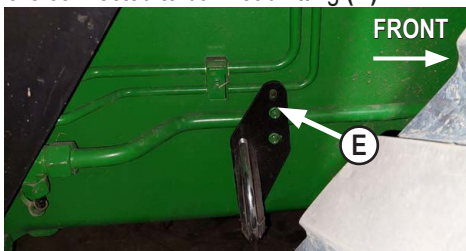
NOTE: Refer to Lift System Parts Book for correct amount of hoses hose clamps and hardware.



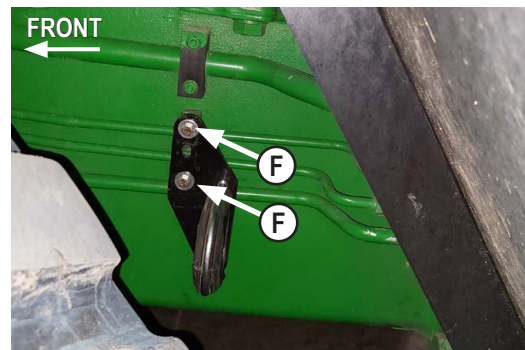
1. Route hoses from top arm and attach the collar rear side undercarriage tower with hose clamps (A). Continue routing hoses through cushioned u-bolts along undercarriage (B).
2. Zip tie hoses through wire loops on undercarriage to secure hoses (C).



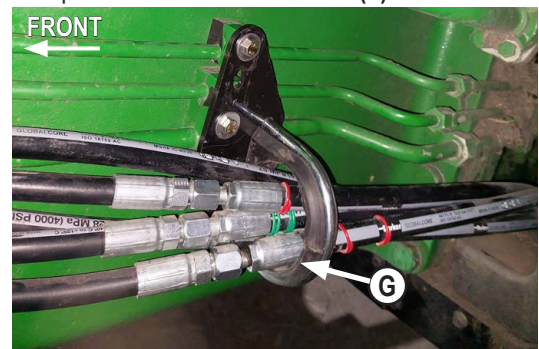
3. Continue routing hoses to end of undercarriage. Lift hoses are connected to bulkhead fitting (D).



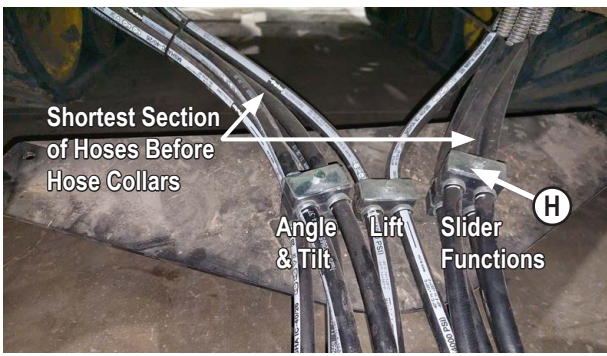
4. Remove 2 stud bolts and cover plate from bottom hydraulic line clamp on right side of tractor. Attach u-bolt to bracket and attach bracket over hydraulic clamp with 2 - 8mm x 60mm bolts and 2 - 1/4" flat washers in bottom holes of bracket (E).



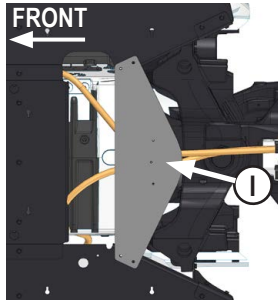
5. Remove 2 stud bolts and cover plates from bottom 2 hydraulic line clamps on left side of tractor. Attach u-bolt to u-bolt bracket and attach u-bolt bracket over hydraulic clamps with 2 - 8mm x 60mm bolts and 2 - 1/4" flat washers in top and bottom hole of bracket (F).



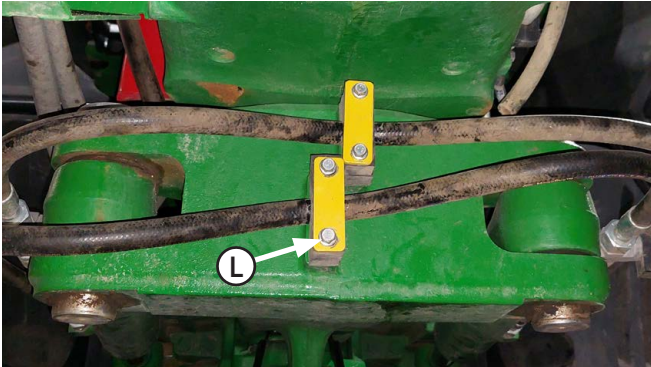
6. Route shortest section of rear hoses towards front from behind fuel tank. Route between fuel tank cavity and tractor frame. Connect front and rear hoses together where u-bolt is attached along side of tractor frame behind the front track system (G).



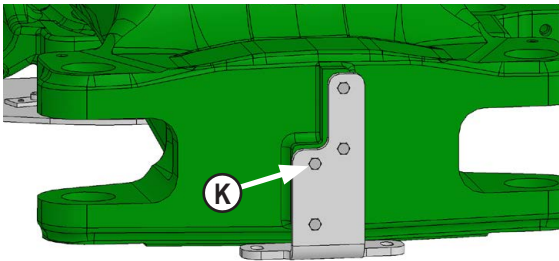
- Attach rear hoses to hose clamps on top of tank bracket. Clamp hoses at the collar locations (H) with shortest section of hoses towards the flat edge of bracket.



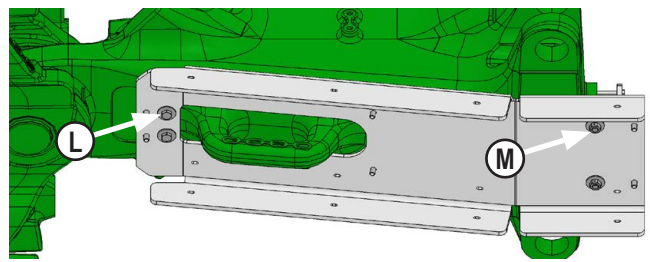
- Attach tank bracket below fuel tank with 4 - 5/16" x 1" carriage bolts and 4 - 5/16" nyloc nuts (I). Long edge of plate towards front.



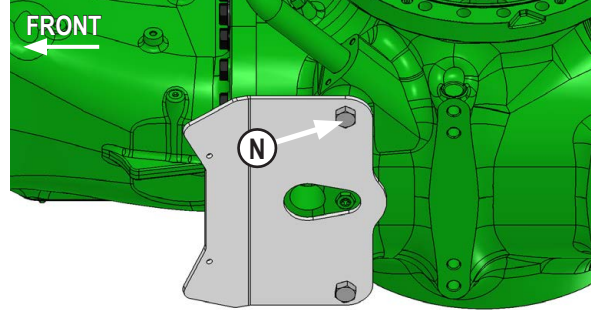
- Remove hardware and hose clamp plates from hose clamps behind steering cylinder mount (L).



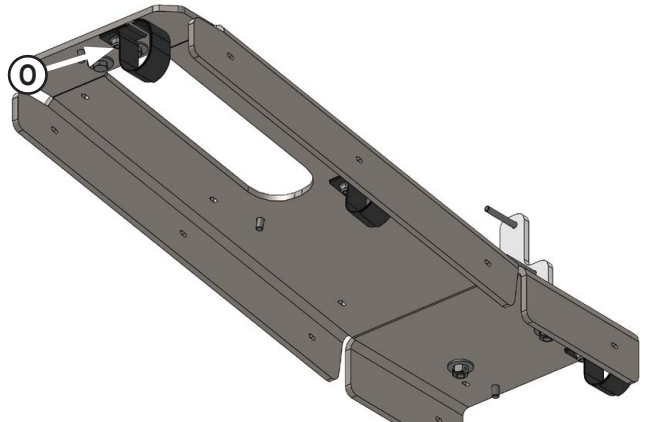
- Attach hose mount plate over hose clamps behind steering cylinder mount with 4 - 8mm x 70mm bolts and 4 - 1/4" washers (K).



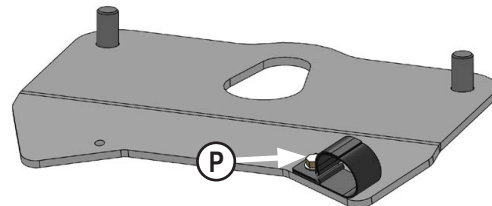
- Attach rear hose plate behind pivot area with 2 - 12mm x 50mm bolts and 2 - 1/2" flat washers (L).
- Attach rear hose plate to hose mount plate with 2 - 1/2" x 1-1/2" bolts, 4 - 1/2" flat washers and 2 - 1/2" nuts (M).



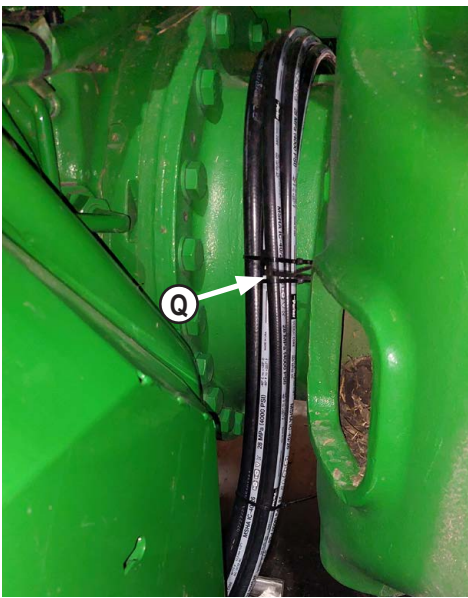
- Attach rear mount plate below rear axle with 2 - 24mm x 50mm bolts (N). Legs of plate pointing towards front of tractor.



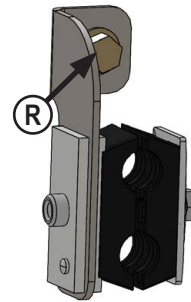
- Attach velcro straps to bottom of rear hose plate with 3/8" flange nuts. Only left side is shown. Use both sides for slider blade option (O).



- Attach velcro straps to top of rear mount plate with 3/8" x 1" flange bolt and 3/8" flange nut. Only left side is shown. Use both sides for slider blade option (P).
- Route lift and blade function hoses under rear hose plate and secure with velcro straps from Step # 14 (O).
- Continue to route lift and blade function hoses above rear mount plate and secure with velcro strap from Step #15 (P).



18. Route lift and blade function hoses above rear axle. Group hoses together with zip ties (Q).

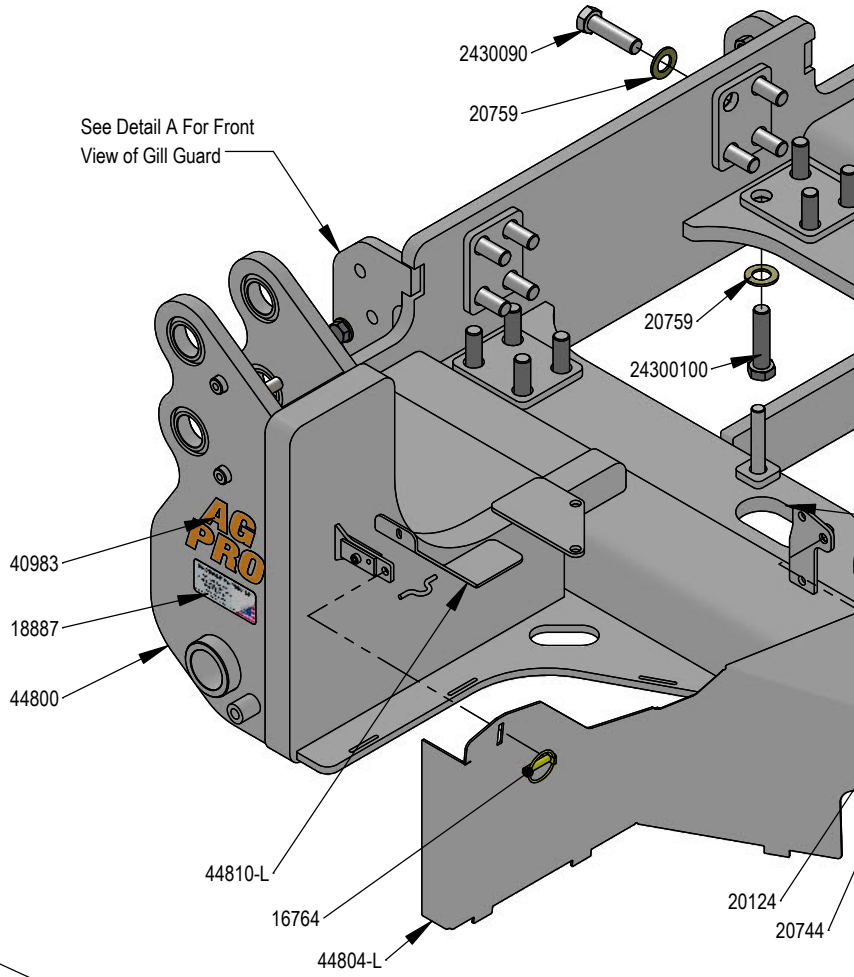


19. Above left rear axle, attach rear hose clamp bracket with 3/8" x 1" flange bolt and 3/8" flange nut (R). Drill hole if necessary. Refer to lift system parts book for further information on hose clamps and hardware.
20. Group hoses and secure with velcro straps.
21. If blade system is a slider, repeat Steps #14-19 for right side.
22. Plug hoses into open SCV's at back of tractor.
23. Turn and articulate tractor in both directions to verify hoses have enough slack and are not being pinched around pivot area. Adjust velcro straps if necessary.

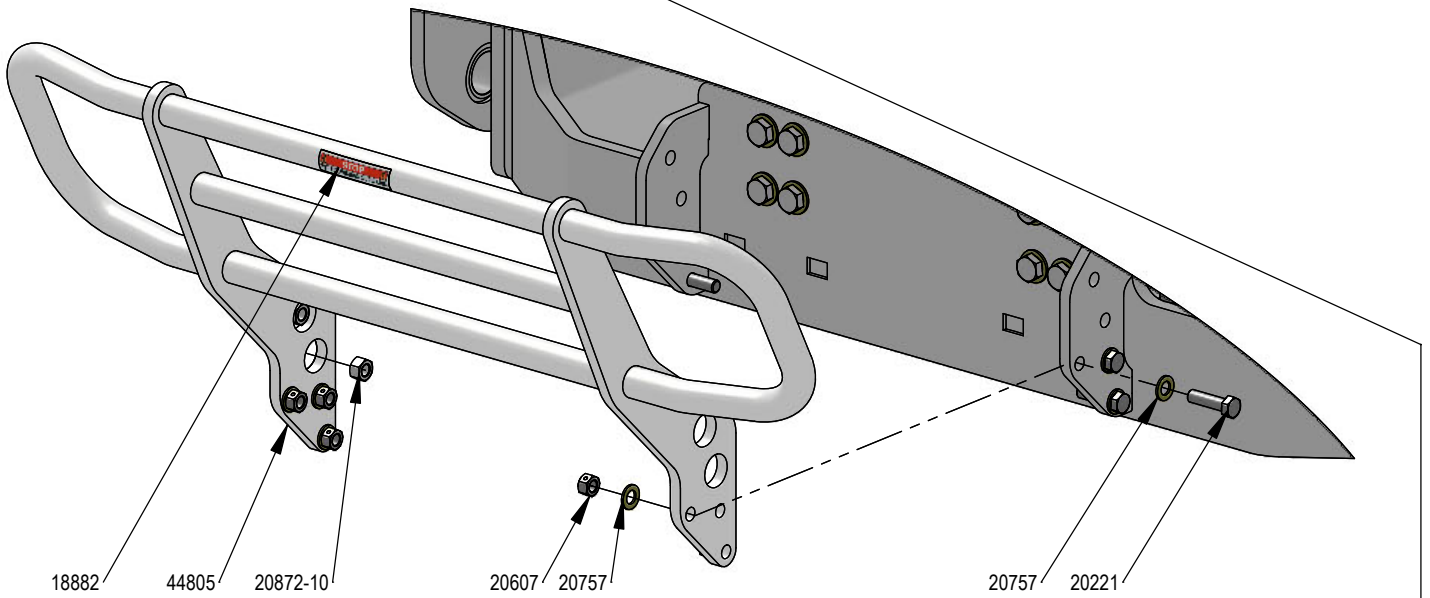
NOTE: In some instances, following the above hose routing is not applicable and it is installers responsibility to route hoses in a practical manner, to protect the hoses around sharp corners and moving objects, and secure hoses.

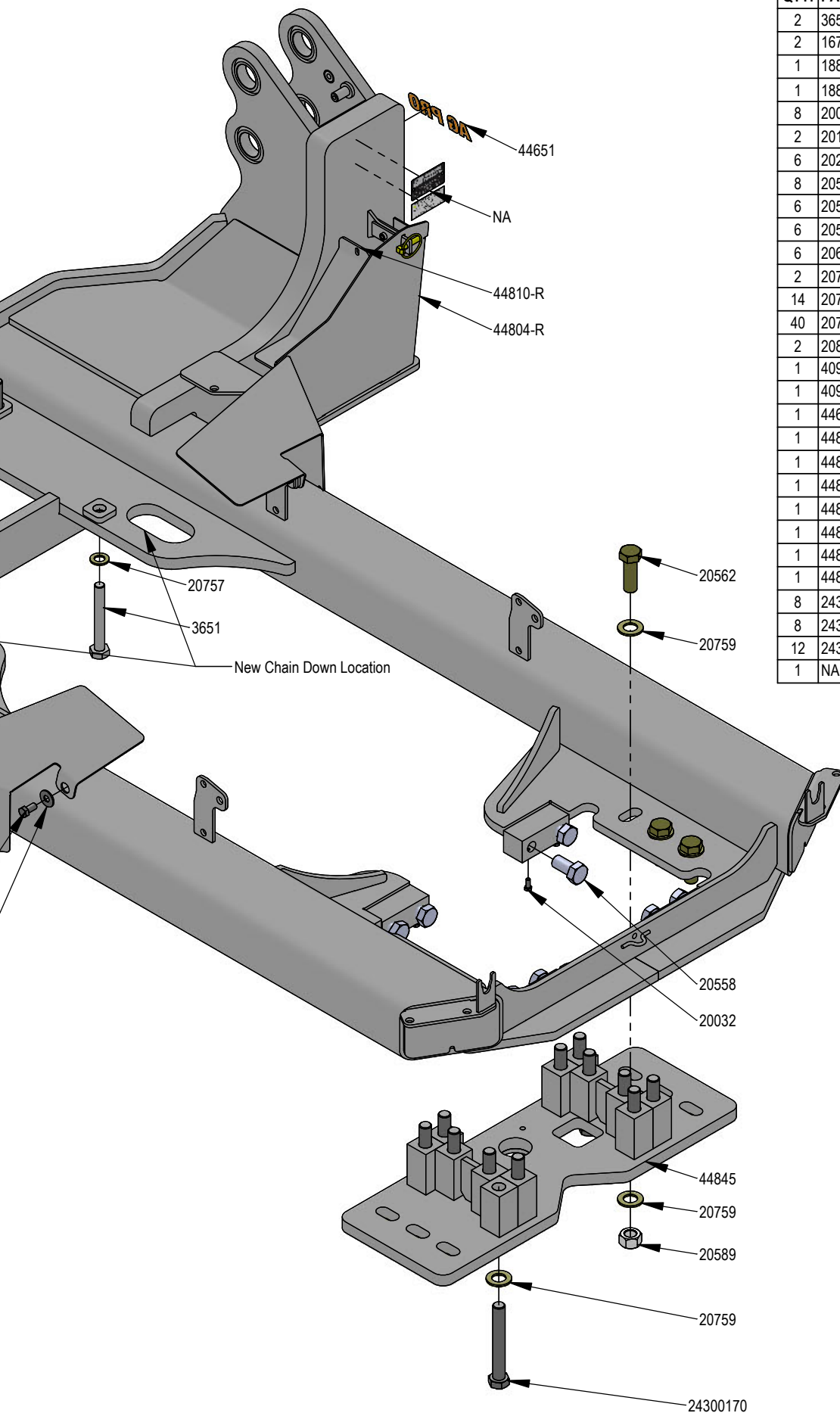
Maintenance

1. After first 8 hours of use, re-torque all bolts.
2. Check all fasteners regularly to ensure proper operation of equipment.
3. Inspect all equipment for existing or potential damages every 10 hours or less.



DETAIL A





QTY.	PART NO.	DESCRIPTION
2	3651	20mm x 2.5mm x 150mm Hex Bolt
2	16764	7/16" x 1-3/4" Lynch Pin
1	18882	Not For Pushing or Pulling Decal
1	18887	Grouser Name Plate Decal - Made in USA
8	20032	5/16" X 3/4" Hex Bolt Gr 5 NC CZ
2	20124	1/2" X 1" Hex Bolt Gr 5 NC CZ
6	20221	3/4" X 2-3/4" Hex Bolt Gr 5 NC CZ
8	20558	1" X 2" Hex Bolt Gr 8 NC YZ
6	20562	1" X 3" Hex Bolt Gr 8 NC YZ
6	20589	1" Hex Nut Gr 5 NC CZ
6	20607	3/4" Hex Center Lock Nut Gr 5 NC CZ
2	20744	1/2" Flat Washer CZ
14	20757	3/4" SAE Hardened Flat Washer - 1-1/2" OD
40	20759	1" SAE Hardened Flat Washer - 2" OD
2	20872-10	M20-2.5 Class 10.9 Hex Nut CZ
1	40962	Warning Prop 65 Decal
1	40983	Ag Pro
1	44651	Ag Pro Decal (small)
1	44800	Undercarriage Weld
1	44805	Grill Guard
1	44804-L	Left Hose Cover
1	44804-R	Left Hose Cover
1	44810-L	Plate, Filler
1	44810-R	Plate, Filler
1	44845	Bracket, Tow Cable Mounting
8	2430090	M24-3.0 x 90mm Class 10.9 Hex Bolt CZ
8	24300100	M24-3.0 x 100mm Class 10.9 Hex Bolt CZ
12	24300170	M24-3.0 x 170mm Class 10.9 Hex Bolt CZ
1	NA	Serial Number Tag

DWG. NO.: 44800-A

Improvements

Grouser Products Inc. is continually striving to improve its products. We reserve the right to change prices, specification, or equipment at any time without notice. We also reserve the right to make improvements or changes when it becomes practical and possible to do so without incurring any obligation to make changes or additions to the equipment sold previously.

Warranty

Grouser Products warrants to the original purchaser of each item that the product be free from defects in material and workmanship under normal use and service for a period of **two (2) years for Agriculture Series Blades and one (1) year for Heavy Duty Series from date of original retail delivery.**

The obligation of the consumer under this warranty:

1. To read the operators manual and to operate, lubricate, maintain and store equipment in accordance with the instructions listed in the operators manual.
2. To inspect equipment and if any part needs repair or replacement when continued use would cause damage or wear to other parts or safety.
3. All equipment or parts claimed to be defective in material or workmanship must be made available for inspection at the place of business of a dealer authorized to handle the equipment covered by this warranty, or, upon request by Grouser Products, shipped to the Grouser Products factory in West Fargo, North Dakota.

The obligation of the dealer under this warranty:

1. Complete warranty registration form and submit within 30 days of sale.
2. Contact Grouser Products for authorization prior to performing any warranty repairs or part replacement.
3. Complete warranty request form and submit with photos and supporting documentation.

The obligation of Grouser Products under this warranty:

1. Repair or replace, any equipment or parts, in the judgment of Grouser Products to be defective in material or workmanship.
2. Grouser Products will cover the cost of parts and ground shipping at dealer invoice only.
3. Grouser Products shall have no obligation to bear the cost of labor or transportation in connection with replacement or repair of any such defective parts.

This warranty does not cover:

1. Depreciation or damage caused by normal wear, accident, improper assembly, improper adjustments.
2. Improper maintenance including lack of proper lubrication, or improper use. Including loose bolts, nuts, or fitting due to over tightening or vibration after 20 hours of operation.
3. Repairs or alterations without authorization from a Grouser Products representative.
4. Grouser Products shall have no liability if the equipment has been altered or reworked without the written authorization of Grouser Products.

Grouser Products' parts, which are furnished under this warranty and properly installed, shall be warranted to the same extent as the original parts under this warranty if, and only if, such parts are found to be defective within the original warranty period covering the original equipment.

NO EMPLOYEE OR REPRESENTATIVE OF GROUSER PRODUCTS IS AUTHORIZED TO CHANGE THE WARRANTY IN ANY WAY OR GRANT ANY OTHER WARRANTY.

Contact Us

As always, if you have any questions about your system or other products made by Grouser, feel free to contact us.



755 2nd Ave NW - West Fargo, ND 58078
+1 701-282-7710 | info@grouser.com
www.grouser.com